

SIGNAGE TO BE APPROVED
UNDER SEPARATE PERMIT

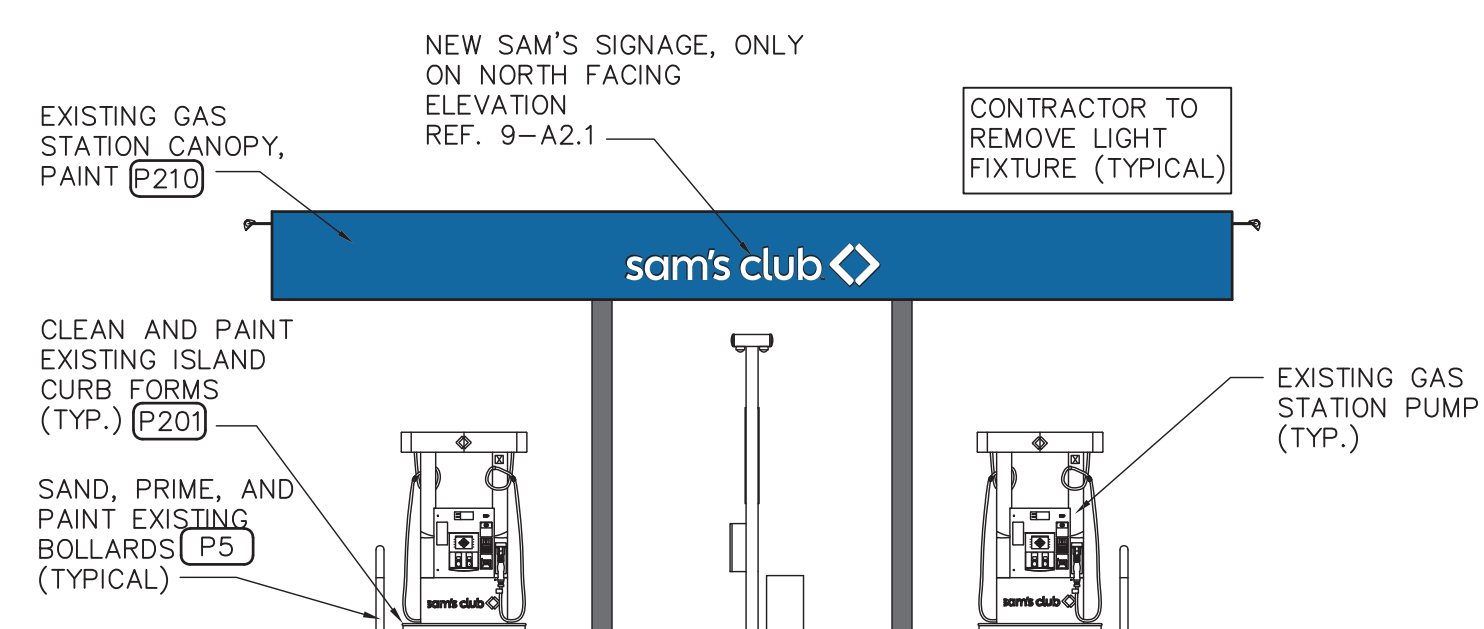
SHEET NOTES

A2-SN

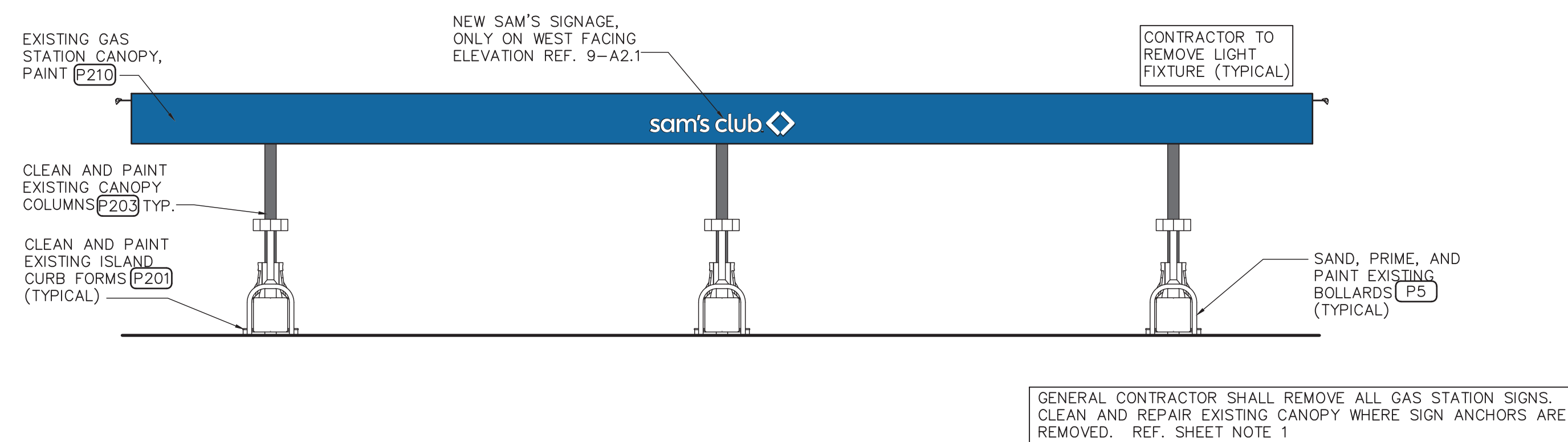
1. REFER TO SIGNAGE DETAIL SHEET FOR SIGNAGE CONTRACTOR RESPONSIBILITIES ASSOCIATED WITH THE INSTALLATION/ DEMOLITION OF SIGNAGE AND EXTERIOR SURFACE REPAIRS.
2. NEW BUILDING SIGNAGE IS SHOWN ON ELEVATIONS.
3. POWER WASH 100% OF EXTERIOR WALLS PRIOR TO PAINTING.
4. PATCH AND REPAIR EXTERIOR WALL SURFACES DAMAGED OR EXPOSED DUE TO REMOVAL OF BUILDING MOUNTED ITEMS, TO MATCH ADJACENT:
 - 4.1. PROVIDE SUBSTRATE SUITABLE FOR INSTALLATION OF NEW SIGNAGE.
 - 4.2. COORDINATE TIMING OF WORK WITH OTHERS TO AVOID CONFLICTS.
 - 4.3. EXTENDS TO GO TO NEAREST CORNER OF REVEAL LINE. REPAIR MATERIAL TO MATCH EXISTING MATERIAL WHEN NOT AN INTEGRAL COLOR.
5. REMOVE SEALANT AND JOINTS AND JOINTS AND EXPANSION JOINTS.
6. PAINT EXTERIOR OF BUILDING AS SHOWN. REFER TO SIGNAGE DETAILS FOR ALL NEW SIGNS.
7. PAINT DOOR HOODS, HOLLOW METAL STEEL DOORS AND FRAMES, EXPOSED METAL FLASHING, HANDRAILS, GAS LINES, AND EXPOSED ELECTRICAL CONDUITS TO MATCH ADJACENT BUILDING COLOR UNO. IF THERE ARE TWO COLORS AT ADJACENT WALL USE BOTH COLORS ON DOORS OR DOOR FRAME, DOWNSPOUTS, AND GUTTERS.
8. PAINT CANOPY STRUCTURAL STEEL AND CANOPY DECK TO MATCH ADJACENT UNO. WHERE CANOPIES ARE VISIBLE TO AND ACCESSIBLE BY CUSTOMERS, PAINT UNDERSIDE OF CANOPY DECK TO MATCH ADJACENT UNO. CANOPY DECK IF NOT PREVIOUSLY PAINTED, PAINT BAY CRANE / BOOM, FALL PROTECTION, PAINT HANDRAILS TO MATCH UNO.
9. PAINT ALL GAS PIPE ON SIDE WALLS TO MATCH ADJACENT WALL COLOR. DO NOT PAINT METRIC VALVES TO MATCH UNO.
10. PAINT SPRINKLER VALVES P21. DO NOT PAINT OVER SIGHT GLASS OR FIRE ALARM BELL.
11. PAINT SECURITY WALL PACK HOUSINGS TO MATCH ADJACENT WALL. REMOVE PAINT EXTERIORLY FROM PACK HOUSINGS.
12. DO NOT PAINT LED WALL PACK HOUSINGS.
13. REMOVE ANY BANNERS OR TEMPORARY SIGNS PRIOR TO PAINTING.
14. PAINT ALL REMOVE BUILDINGS, FENCES, OR STRUCTURE NOT SHOWN ON A2, THAT WERE PREVIOUSLY PAINTED TO MATCH UNO. UNO.
15. EXISTING EXTERIOR OVERHEAD SECTIONAL DOORS TO REMAIN WHICH ARE FACTORY PAINTED TO MATCH UNO. IF NOT PAINT, FIELD VERIFY APPLICABLE DOORS.
16. EXISTING EXTERIOR OVERHEAD SECTIONAL DOORS TO REMAIN WHICH ARE FACTORY PAINTED TO MATCH UNO. IF NOT PAINT, FIELD VERIFY APPLICABLE DOORS.
17. EXISTING EXTERIOR OVERHEAD SECTIONAL DOORS TO REMAIN WHICH ARE FACTORY PAINTED TO MATCH UNO. IF NOT PAINT, FIELD VERIFY APPLICABLE DOORS.
18. EXISTING EXTERIOR OVERHEAD SECTIONAL DOORS TO REMAIN WHICH ARE FACTORY PAINTED TO MATCH UNO. IF NOT PAINT, FIELD VERIFY APPLICABLE DOORS.



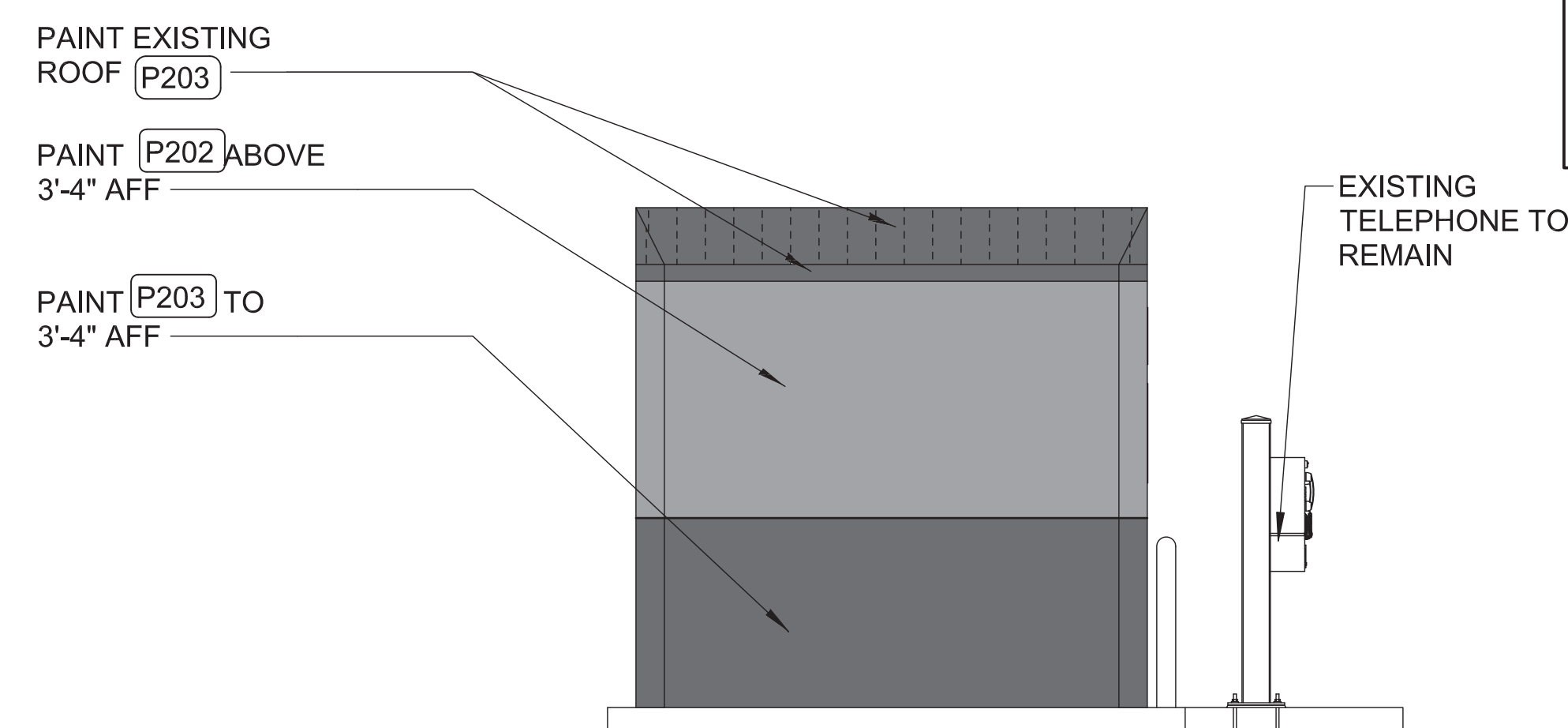
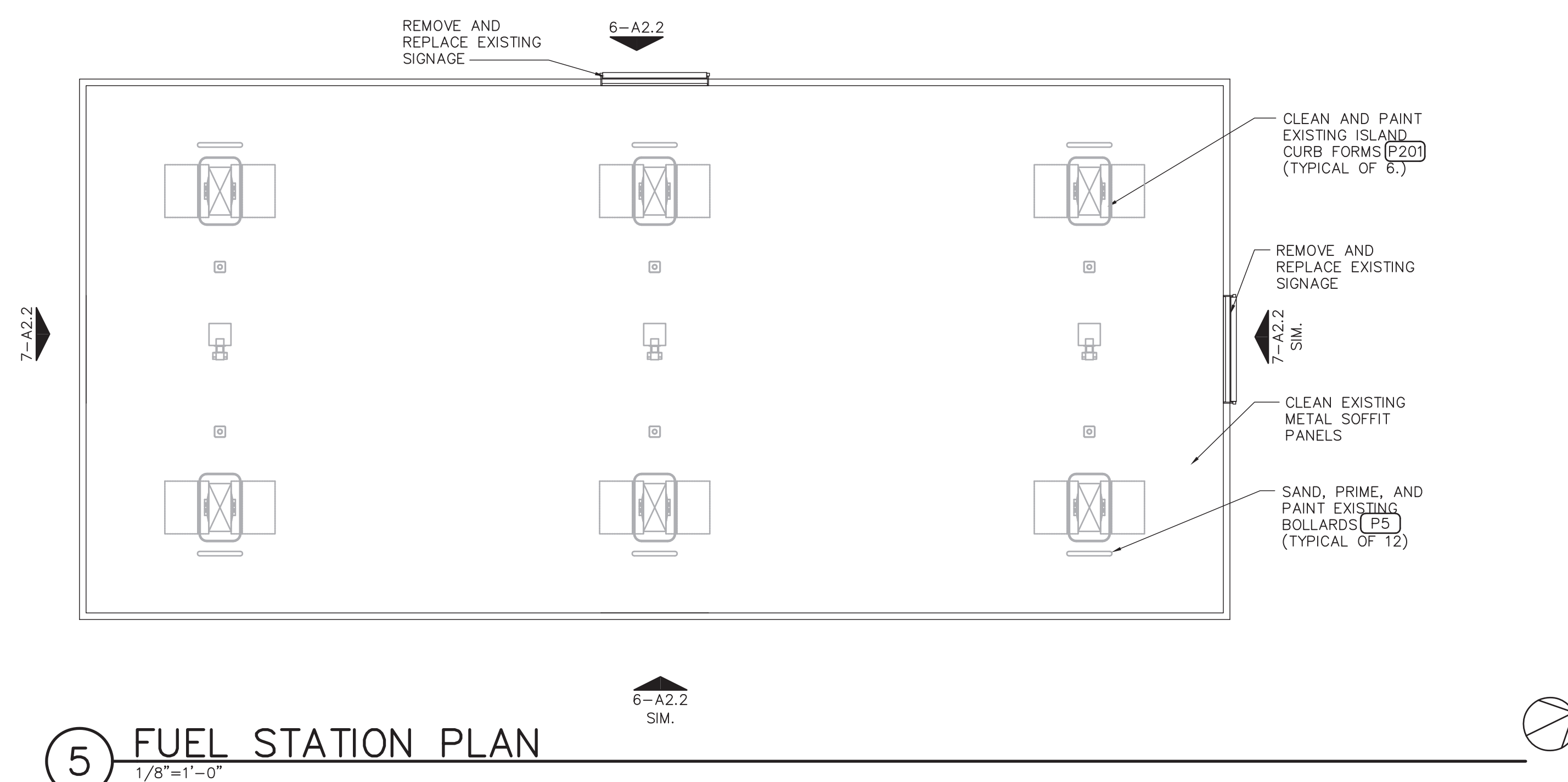
SHEET: A2



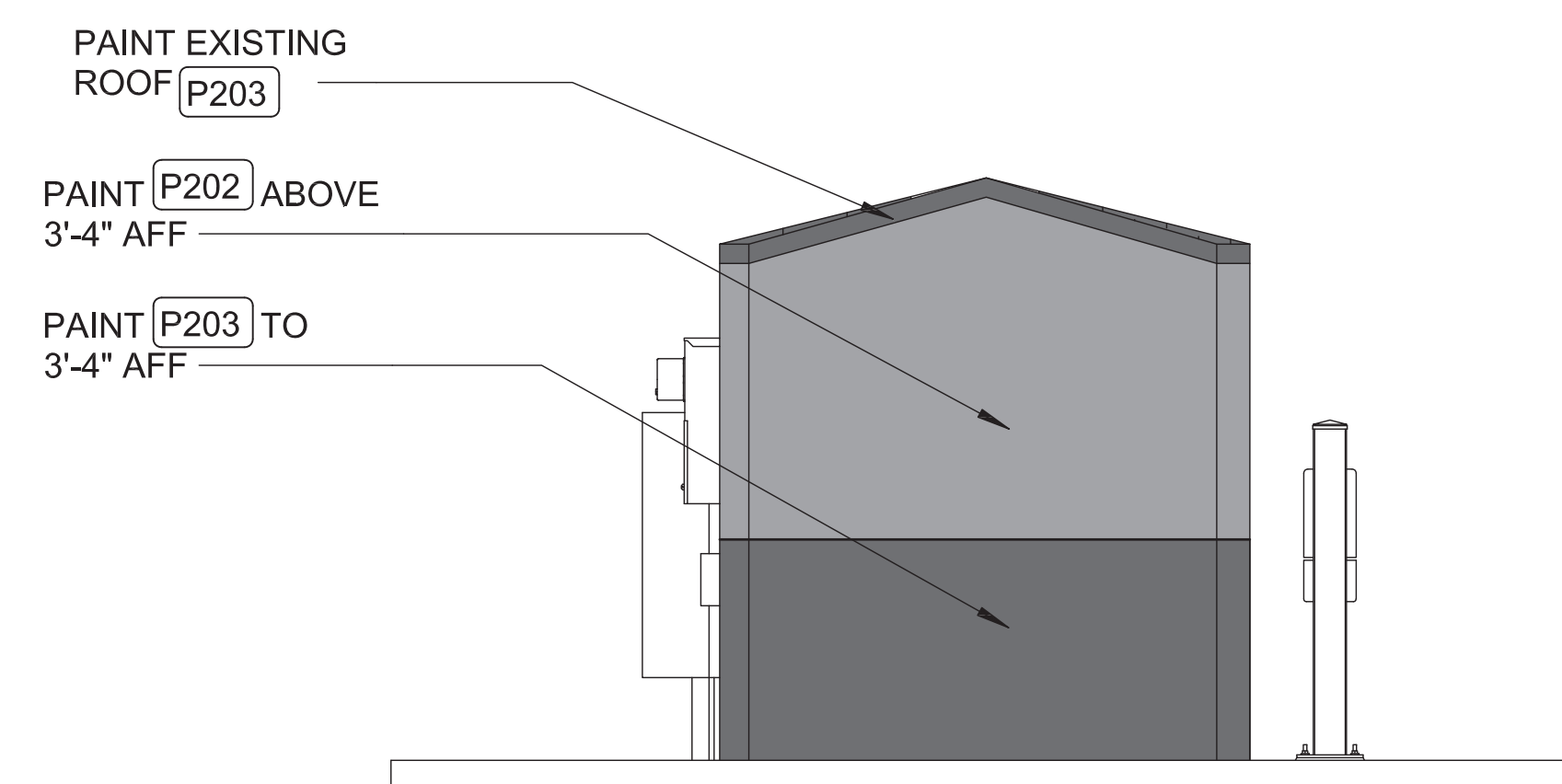
7 NORTH AND SOUTH ELEVATION
1/8"=1'-0"



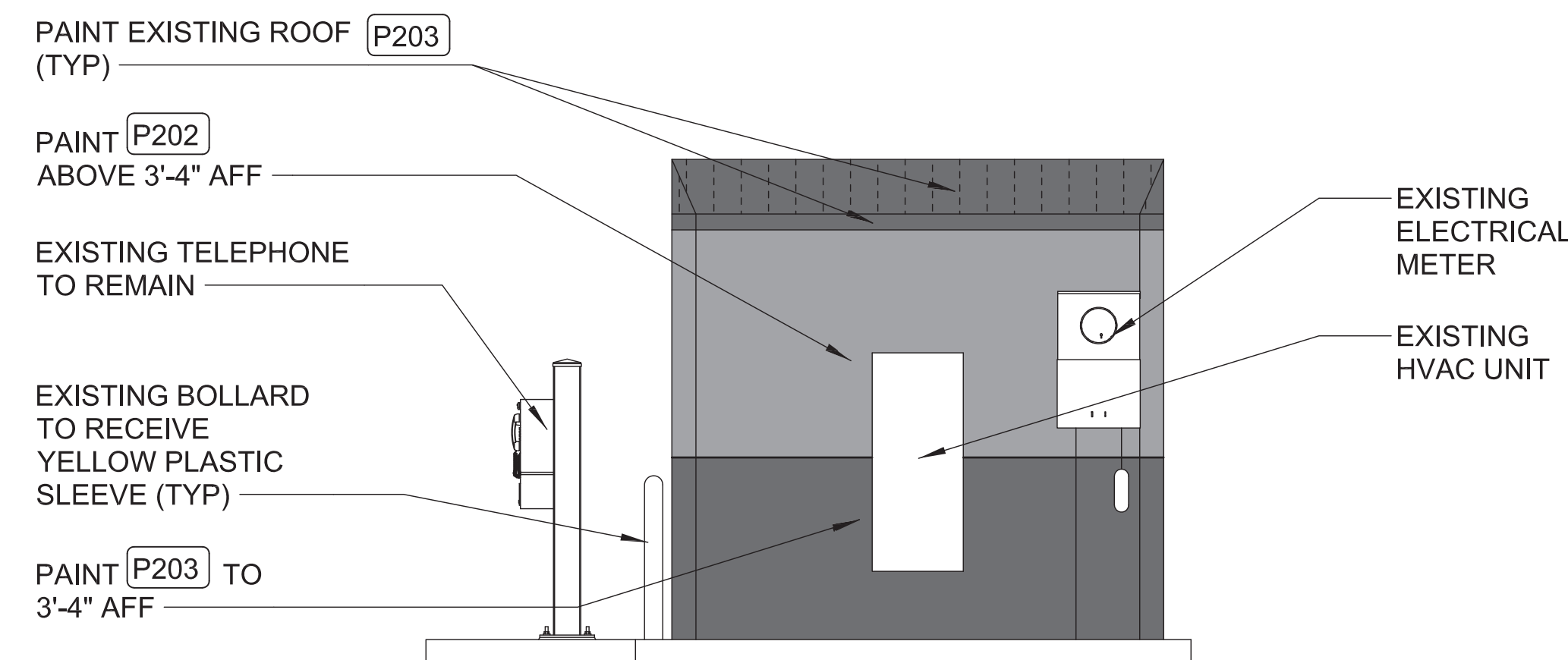
6 EAST AND WEST ELEVATION



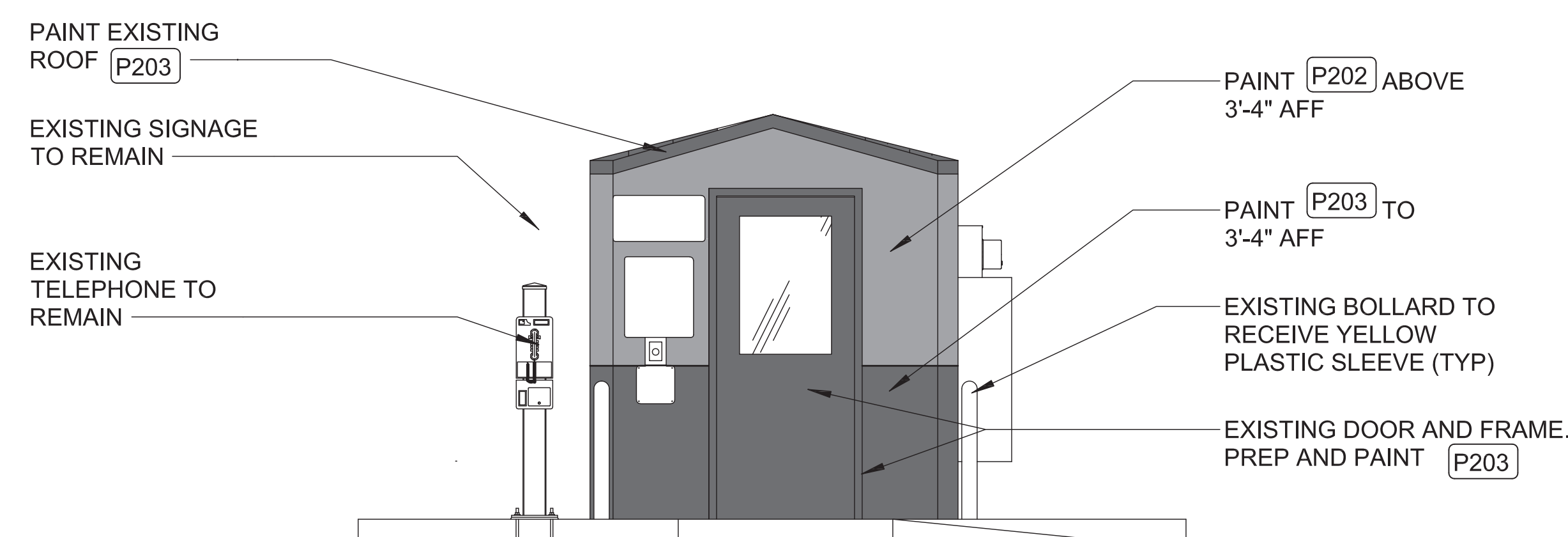
4 SERVICE BUILDING ELEVATION



3 SERVICE BUILDING ELEVATION



2 SERVICE BUILDING ELEVATION
3/8"=1'-0"



1 SERVICE BUILDING ELEVATION

COLOR LEGEND

SHEET NOTES

A2-SN

P5	OSHA STANDARD SAFETY YELLOW
P21	SAFETY RED SW #4081
P23	WHITE SW #7005
P36	BLACK SW # 6989
P201	MARCH WIND SW #7004
P202	GRAY SHINGLE SW #7670
P203	URBANE BRONZE SW #7048
P210	BLUE CHIP SW #6959
HCRC4	MATCH SW# 7019 "GAUNTLET GRAY"
HCRC5	MATCH SW# 7048 "URBANE BRONZE"

1. REFER TO SIGNAGE DETAIL SHEET FOR SIGNAGE CONTRACTOR RESPONSIBILITIES ASSOCIATED WITH THE INSTALLATION/ DEMOLITION OF SIGNAGE AND EXTERIOR SURFACE REPAIRS.
2. NEW BUILDING SIGNAGE IS SHOWN ON ELEVATIONS.
3. POWER WASH 100% OF EXTERIOR WALLS PRIOR TO PAINTING.
4. PATCH AND REPAIR EXTERIOR WALL SURFACES, DAMAGED OR EXPOSED DUE TO REMOVAL OF BUILDING MOUNTED ITEMS, TO MATCH ADJACENT.
 - 4.1. PROVIDE SUBSTRATE SUITABLE FOR INSTALLATION OF NEW SIGNAGE. COORDINATE TIMING OF WORK WITH OWNERS SIGN CONTRACTOR.
 - 4.2. EXTENDS TO GO TO NEAREST CORNER OF REVEAL LINE. REPAINT WALL TO MATCH EXISTING WHERE EPS IS NOT INTEGRAL COLOR.
5. REMOVE SEALANT AND BACKER MATERIAL FROM ALL BUILDING CONTROL JOINTS AND EXPANSION JOINTS.
6. PAINT EXTERIOR OF BUILDING AS SHOWN. REFER TO SIGNAGE DETAILS FOR ALL NEW SIGNS.
7. PAINT DOOR HOODS, HOLLOW METAL STEEL DOORS AND FRAMES, EXPOSED METAL FLASHING, HANDRAILS, GAS LINES, AND EXPOSED MISCELLANEOUS STEEL TO MATCH ADJACENT BUILDING COLOR UNO. IF THERE ARE TWO COLORS AT ADJACENT WALL, USE BOTTOM COLOR FOR ENTIRE DOOR, DOOR FRAME, DOWNSPOUTS, AND GUTTERS.
8. PAINT CANOPY STRUCTURAL STEEL AND FLASHING TO MATCH ADJACENT WALL, U.N.O.
9. WHERE CANOPIES ARE VISIBLE TO AND ACCESSED BY CUSTOMERS, PAINT UNDERSIDE OF CANOPY DECK P140. DO NOT PAINT CANOPY DECK IF NOT PREVIOUSLY PAINTED.
10. PAINT JIB CRANE / BOOM, FALL PROTECTION, AND HANDRAILS, - P36.
11. PAINT ALL GAS PIPE ON SIDE WALLS TO MATCH ADJACENT WALL COLOR, DO NOT PAINT METER OR VALVES.
12. PAINT SPRINKLER VALVES P21. DO NOT PAINT OVER SIGHT GLASS OR FIRE ALARM BELL.
13. PAINT SECURITY WALL PACK HOUSINGS TO MATCH ADJACENT WALL. REMOVE PAINT OVERSPRAY FROM LENSES.
14. DO NOT PAINT LED WALL PACK HOUSINGS.
15. REMOVE ANY BANNERS OR TEMPORARY SIGNS PRIOR TO PAINT.
16. PAINT ALL REMOTE BUILDINGS, FENCES, OR STRUCTURE NOT SHOWN ON A2, THAT WERE PREVIOUSLY PAINTED, P202 "GRAY SHINGLE".
17. EXISTING EXTERIOR OVERHEAD SECTIONAL DOORS TO REMAIN WHICH ARE FACTORY FINISHED SHALL BE CLEANED. DO NOT PAINT. FIELD VERIFY APPLICABLE DOORS.
18. EXISTING EXTERIOR OVERHEAD SECTIONAL DOORS TO REMAIN WHICH ARE PAINTED SHALL BE CLEANED AND REPAINTED, P23 "PURE WHITE". FIELD VERIFY APPLICABLE DOORS.