

Concord Municipal Airport

Terminal Area Study
SBG-04-14-2019



Prepared for:

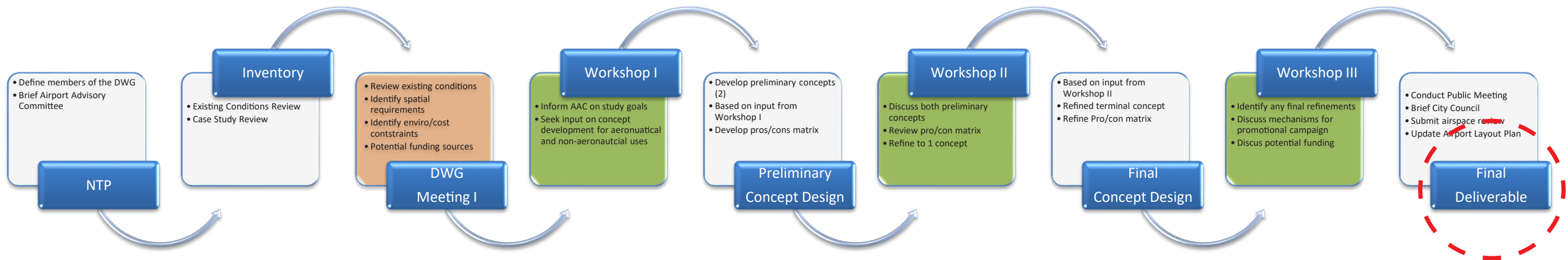
Prepared by:



Jacobs

FEBRUARY 8, 2021

PROCESS



AAC (Airport Advisory Committee)

DWG (Design Working Group) Members

- Deputy City Manager
- Associate City Engineer
- City Planning Representative
- City Economic Development Director
- AAC Representative
- NH Fish and Game Representative
- NH Bureau of Aeronautics
- Concord Aviation (FBO)
- Regional Planning Commission Representative
- Jacobs



DESIGN THEMES

IMAGE

- Local and Regional
- National exposure - first in the Nation Primary
- Private schools and businesses
- Represent New Hampshire

COMMUNITY

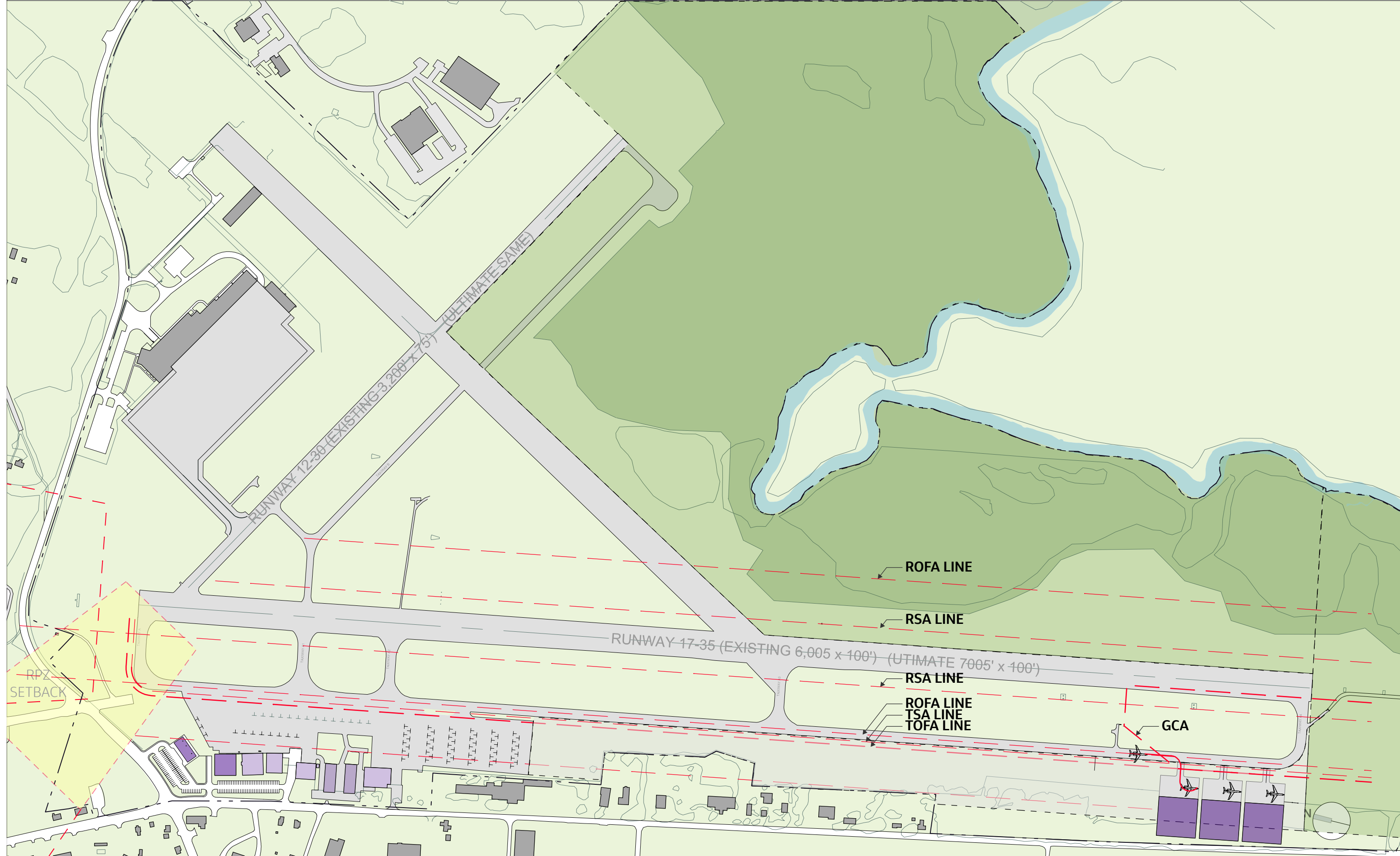
- Gateway to the Airport
- Enhance visibility from roadways
- Include educational and recreational opportunities

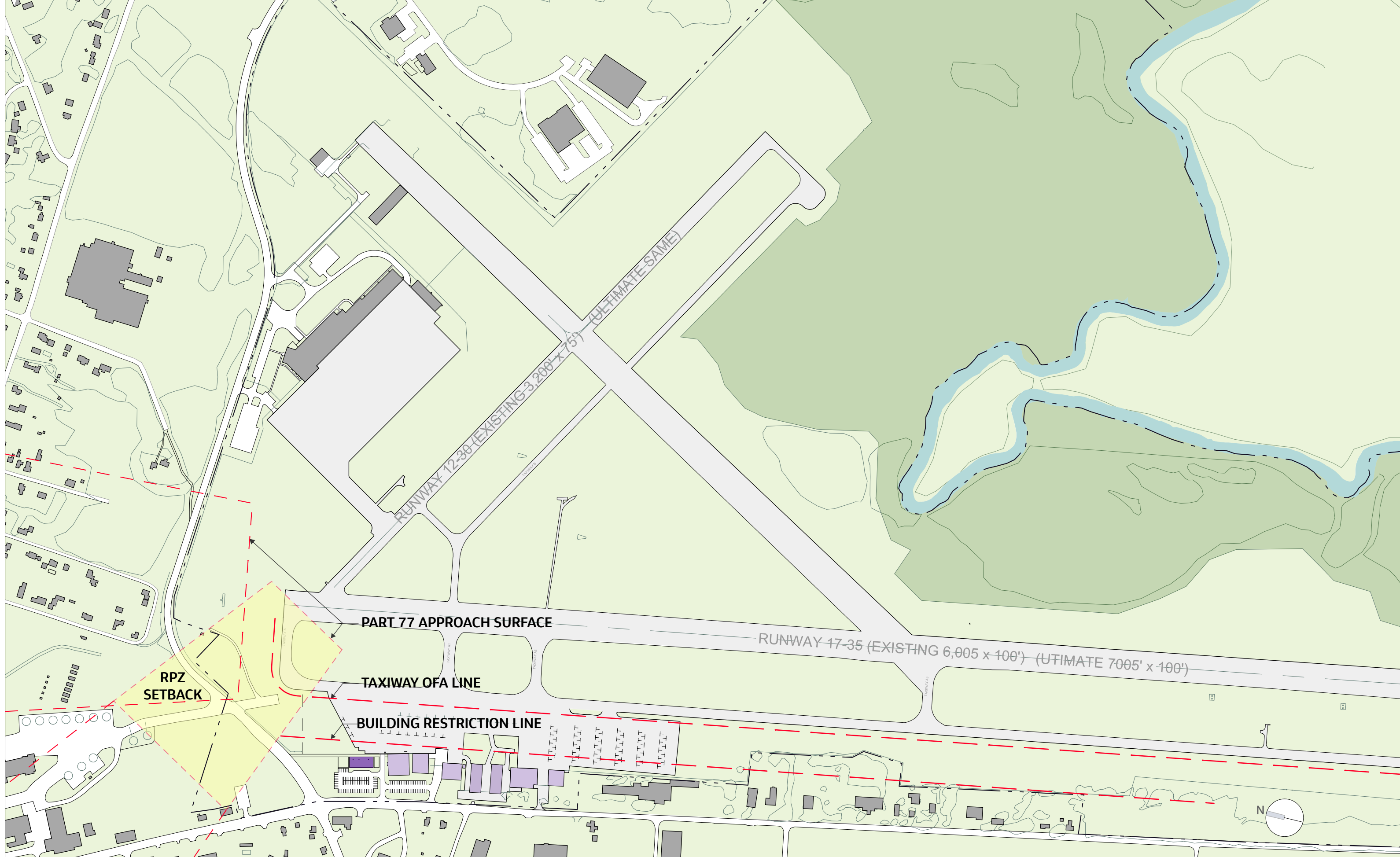
FUNCTION

- Provide for current and future needs
- Expandability
- Flexibility

SUSTAINABILITY

- Align with Concord's carbon reduction initiatives
- Terminal should be financially solvent
- Private and FAA funding opportunities





PROJECT AREA

PUBLIC
AMENITY AREA

CONCORD
MUNICIPAL
AIRPORT

FUTURE
HANGAR

HANGAR #1
FBO OFFICE

HANGAR #2

REGIONAL DRIVE

PARKING - 77 SPACES

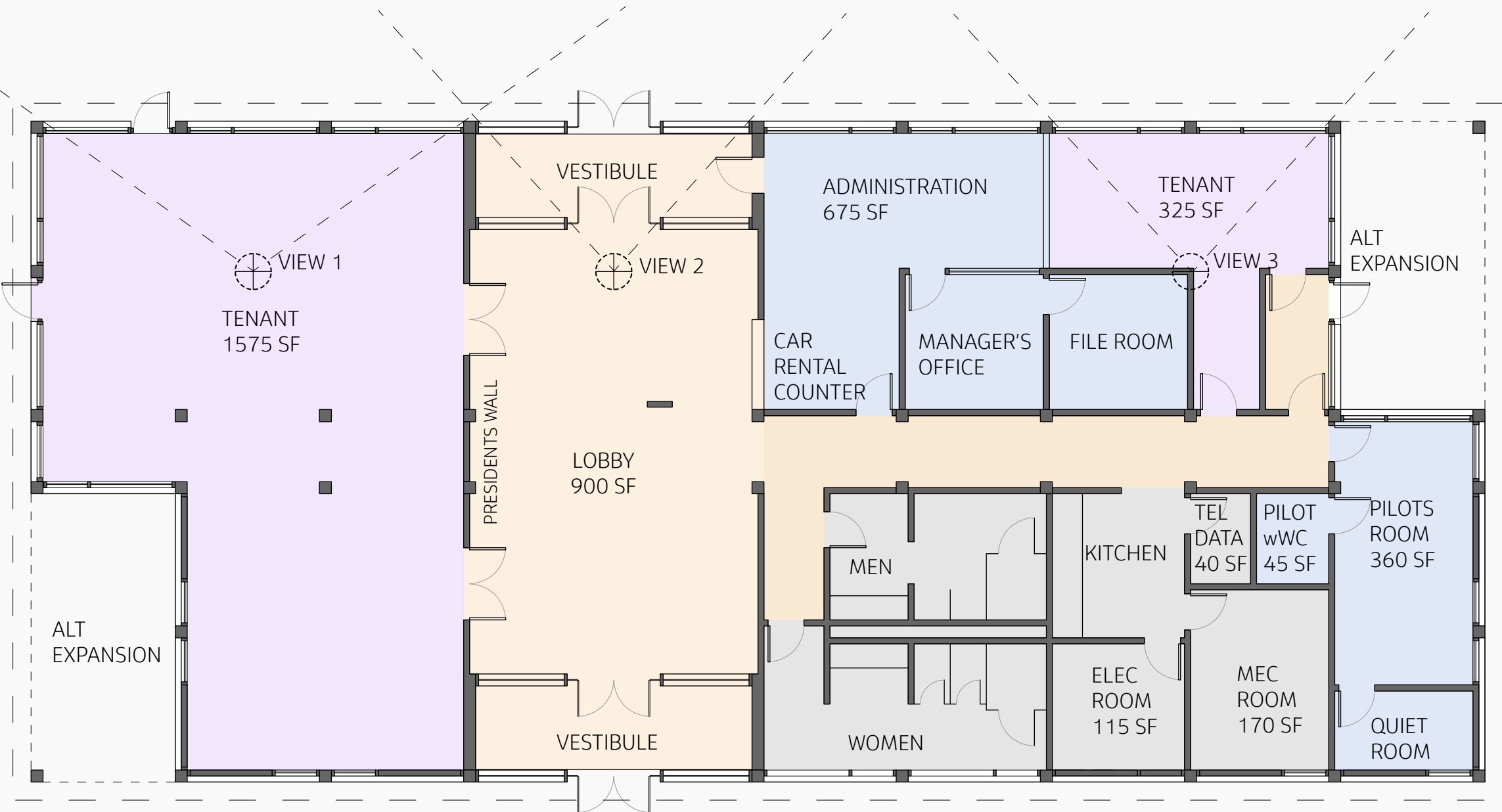
FUTURE PARKING - 70 SPACES

AIRPORT ROAD

N

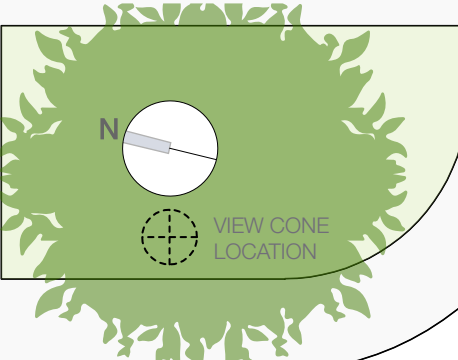


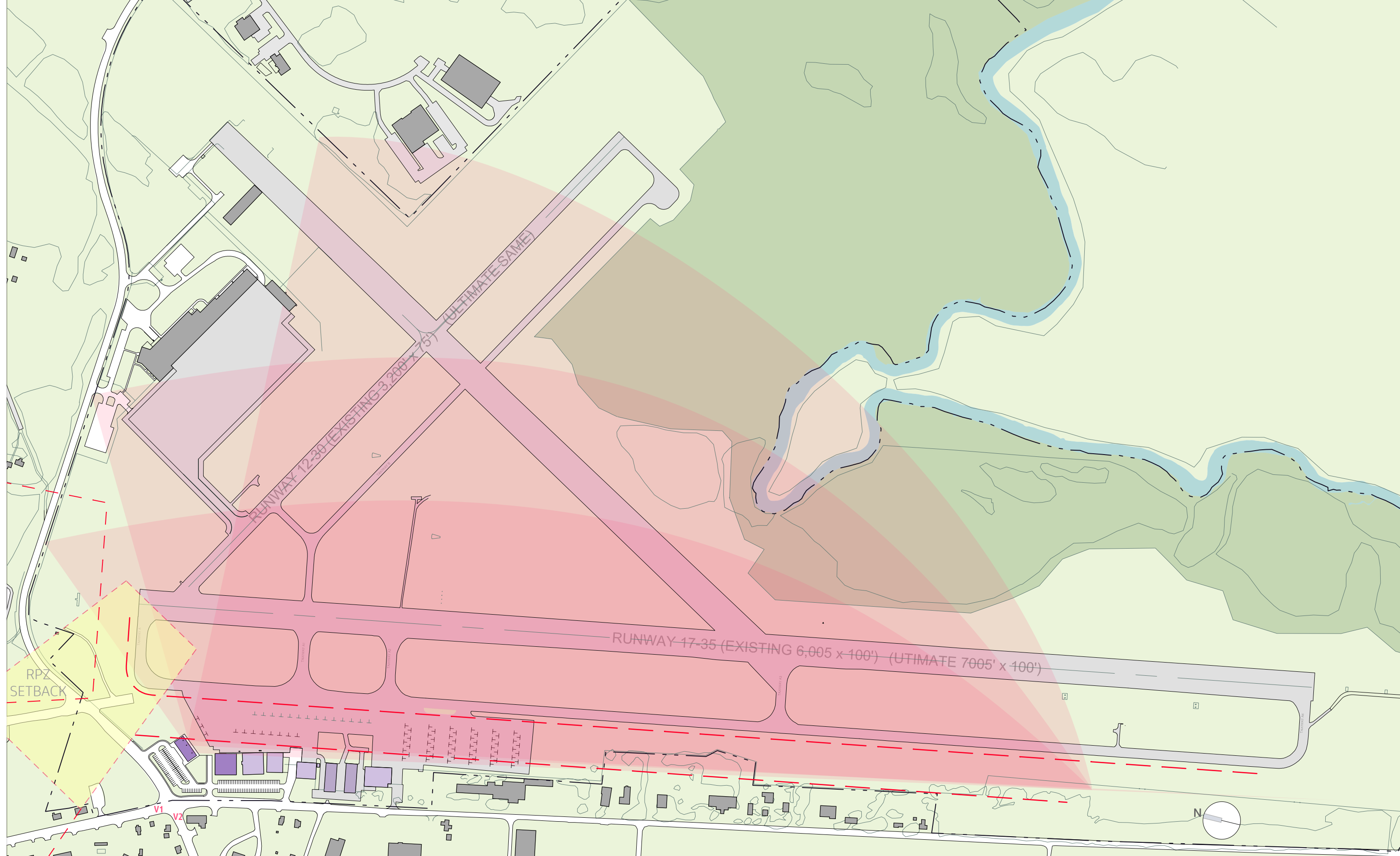
AIRSIDE



LANDSIDE

TOTAL = 5,450 GSF





TERMINAL DESIGN







PUBLIC VIEW



TENANT VIEW



TERMINAL LOCATION





