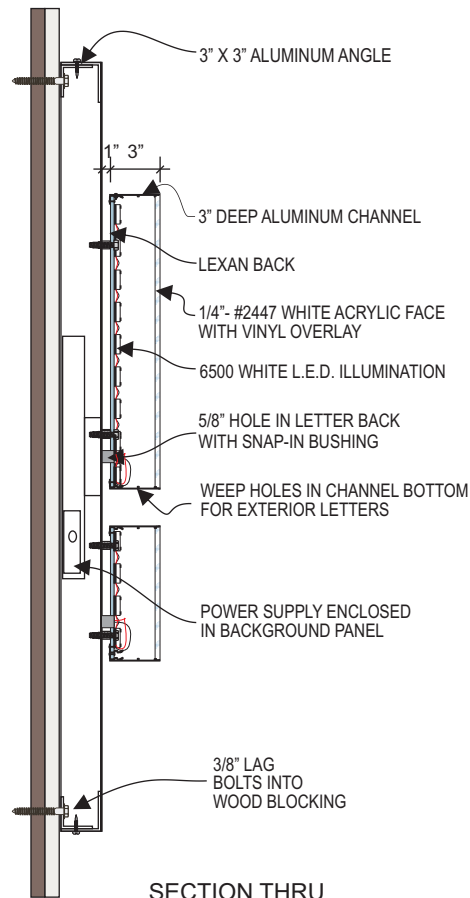
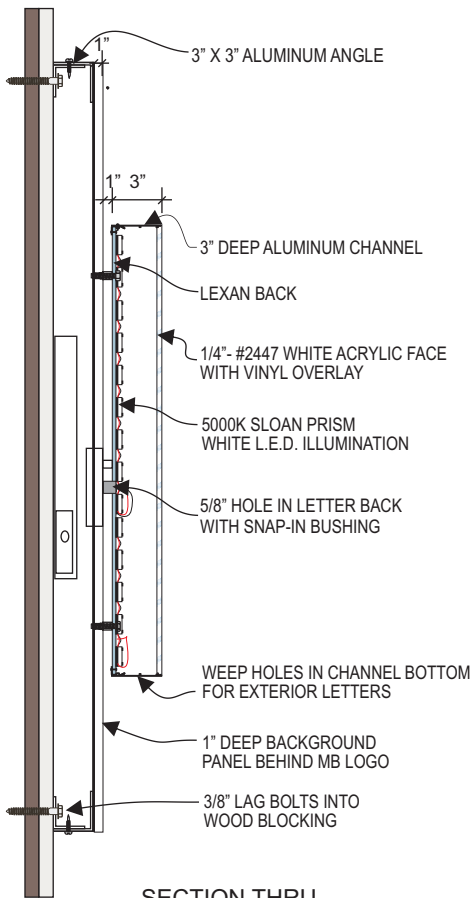




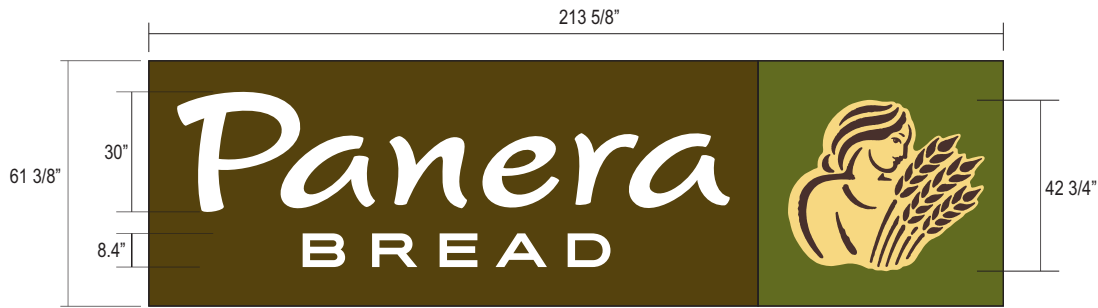
FRONT ELEVATION: SCALE: 1/8"=1'-0"



SECTION THRU
PANERA BREAD



SECTION THRU
MOTHER BREAD LOGO



SCALE: 1/4" = 1'-0" 91.90 S/F

- INTERNALLY ILLUMINATED FRONT LIT/HALO LIT CHANNEL LETTERS:
- "PANERA BREAD" LETTERS
 - 2447 WHITE FACES WITH 3" DEEP CHANNELS PAINTED BLACK
 - CLEAR LEXAN BACKS
 - 6500 WHITE LED LIGHTING (PANERA BREAD)
 - 5000K SLOAN PRISM (MOTHER BREAD)
 - TRIMLESS DESIGN
 - MB LOGO WITH PANTONE 7403 CP INTERNALLY LIT/HALO LIT TRANSLUCENT BACKGROUND & PANTONE 476 CP DETAILS
 - 3" DEEP CHANNEL PAINTED TO MATCH PANTONE 476 CP
 - 3" DEEP BACKGROUND PANEL PAINTED TO MATCH PANTONE 476 CP WITH 1" THICK SUPER IMPOSED PANEL BEHIND MB LOGO PAINTED PANTONE 5757 CP
 - ALL GRAPHICS TO BE PINNED OFF PANEL 1"
 - SELF CONTAINED POWER SUPPLIES

ARTWORK EXCLUSIVE PROPERTY OF

SINCE 1917



MANDEVILLE SIGN
making your mark.

676 GEORGE WASHINGTON HIGHWAY
LINCOLN, RI 02865-4255

401-334-9100 401-334-7799
PHONE FAX

WEB www.mandevillesign.com

APPROVALS	
Signatures Required Before Release to Production	
Engineering	
BY	DATE
Sales	
BY	DATE
Estimating	
BY	DATE
Production	
BY	DATE
Quality Control	
BY	DATE

VM PRODUCT NUMBER(S)

51274.1

WORK ORDER NUMBER(S)

REVISIONS			
NO.	BY	DESCRIPTION	DATE
1	JM	added roof top AC unit	01/10/20
2			
3			
4			
5			
6			
7			
8			
9			
10			
11			
12			

CLIENT



STORE NUMBER **#3409**

75-77 Fort Eddy Road
Concord, NH 03301

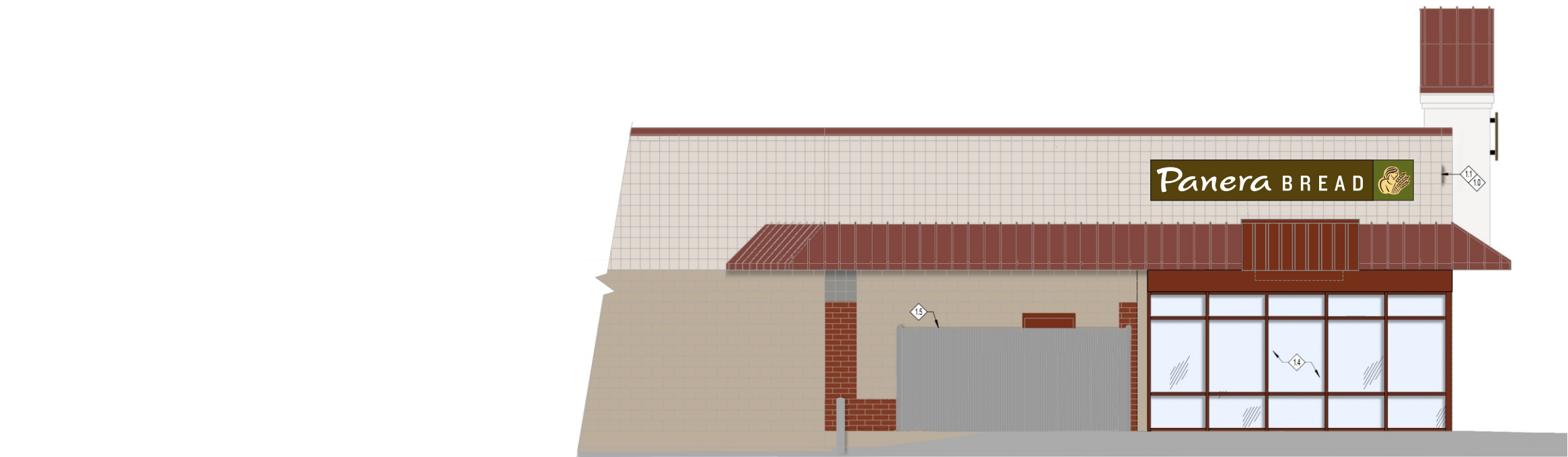
LOCATION

PROJECT MANAGER **JIM MANDEVILLE**

CHECKED BY	DATE	JM	10/17/19
SCALE	NOTED	ARTIST	DATE

51274.2

DRAWING NAME



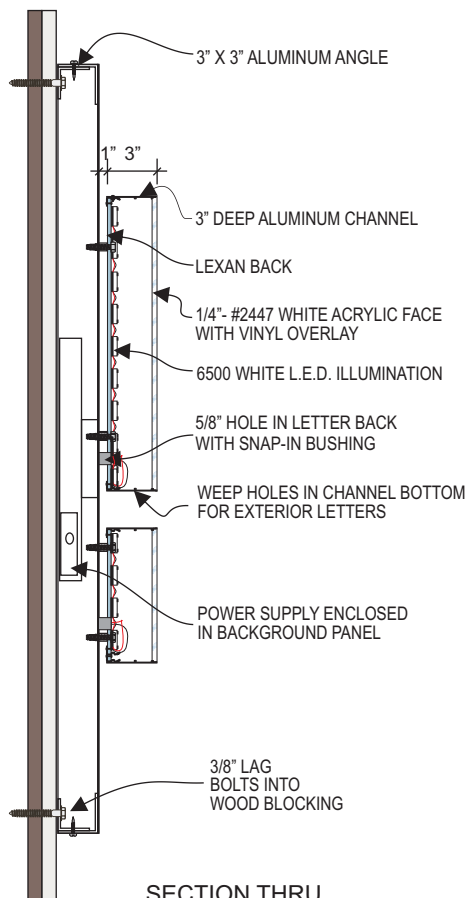
SIDE ELEVATION: SCALE: 1/8"=1'-0"



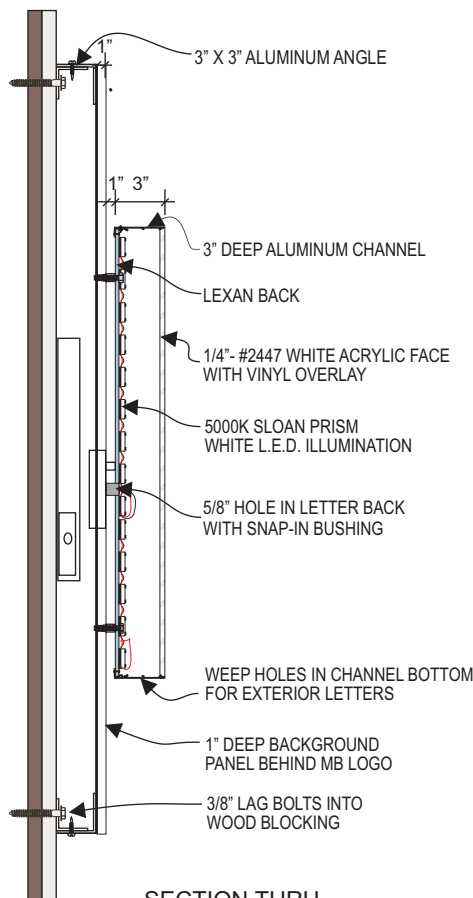
SCALE: 3/8"=1'-0"

INTERNALLY ILLUMINATED FRONT LIT/HALO LIT CHANNEL LETTERS:

- "PANERA BREAD" LETTERS
 - 2447 WHITE FACES WITH 3" DEEP CHANNELS PAINTED BLACK
 - CLEAR LEXAN BACKS
 - 6500 WHITE LED LIGHTING (PANERA BREAD)
 - 5000K SLOAN PRISM (MOTHER BREAD)
- TRIMLESS DESIGN
- MB LOGO WITH PANTONE 7403 CP INTERNALLY LIT/HALO LIT TRANSLUCENT BACKGROUND & PANTONE 476 CP DETAILS
- 3" DEEP CHANNEL PAINTED TO MATCH PANTONE 476 CP
- 3" DEEP BACKGROUND PANEL PAINTED TO MATCH PANTONE 476 CP WITH 1" THICK SUPER IMPOSED PANEL BEHIND MB LOGO PAINTED PANTONE 5757 CP
- ALL GRAPHICS TO BE PINNED OFF PANEL 1"
- SELF CONTAINED POWER SUPPLIES



SECTION THRU
PANERA BREAD



SECTION THRU
MOTHER BREAD LOGO

ARTWORK EXCLUSIVE PROPERTY OF

SINCE 1917

MANDEVILLE SIGN
making your mark.

676 GEORGE WASHINGTON HIGHWAY
LINCOLN, RI 02865-4255

401-334-9100 401-334-7799
PHONE FAX

WEB www.mandevillesign.com

APPROVALS	
Signatures Required Before Release to Production	
Engineering	
BY	DATE
Sales	
BY	DATE
Estimating	
BY	DATE
Production	
BY	DATE
Quality Control	
BY	DATE

VM PRODUCT NUMBER(S)

51274.1

WORK ORDER NUMBER(S)

REVISIONS			
NO.	BY	DESCRIPTION	DATE
1	JM	added roof top AC unit	01/10/20
2			
3			
4			
5			
6			
7			
8			
9			
10			
11			
12			

CLIENT

Panera BREAD

STORE NUMBER **#3409**

75-77 Fort Eddy Road
Concord, NH 03301

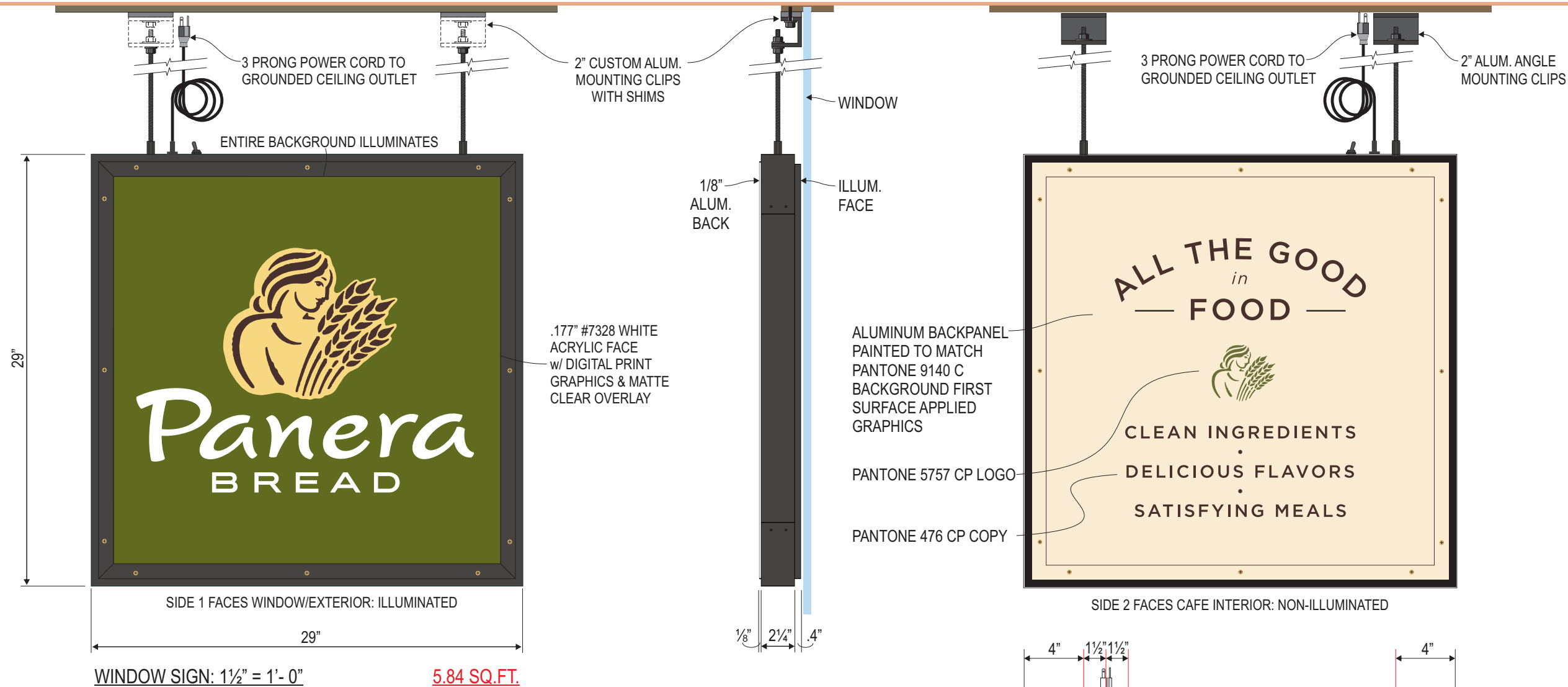
LOCATION

PROJECT MANAGER **JIM MANDEVILLE**

CHECKED BY	DATE	JM	10/17/19
SCALE	NOTED	ARTIST	DATE

51274.3

DRAWING NAME



(1) 29" X 29" X 2 7/8" DEEP D/F INTERIOR ILLUMINATED HANGING WINDOW SIGN.

- FACE IS ILLUMINATED AND BACK IS REMOVABLE AND OPAQUE.
- 60 WATT SELF CONTAINED POWER SUPPLY.
- SWITCH AND 6'-7" 3 PRONG POWER CORD OUT TOP.
- SUPPLY (2) 6' LENGTHS OF 1/4-20 BLACK OXIDE THREADED ROD AND (2) ALUMINUM PAINTED ANGLE CLIPS FOR INSTALLATION.

FACE SPECS:

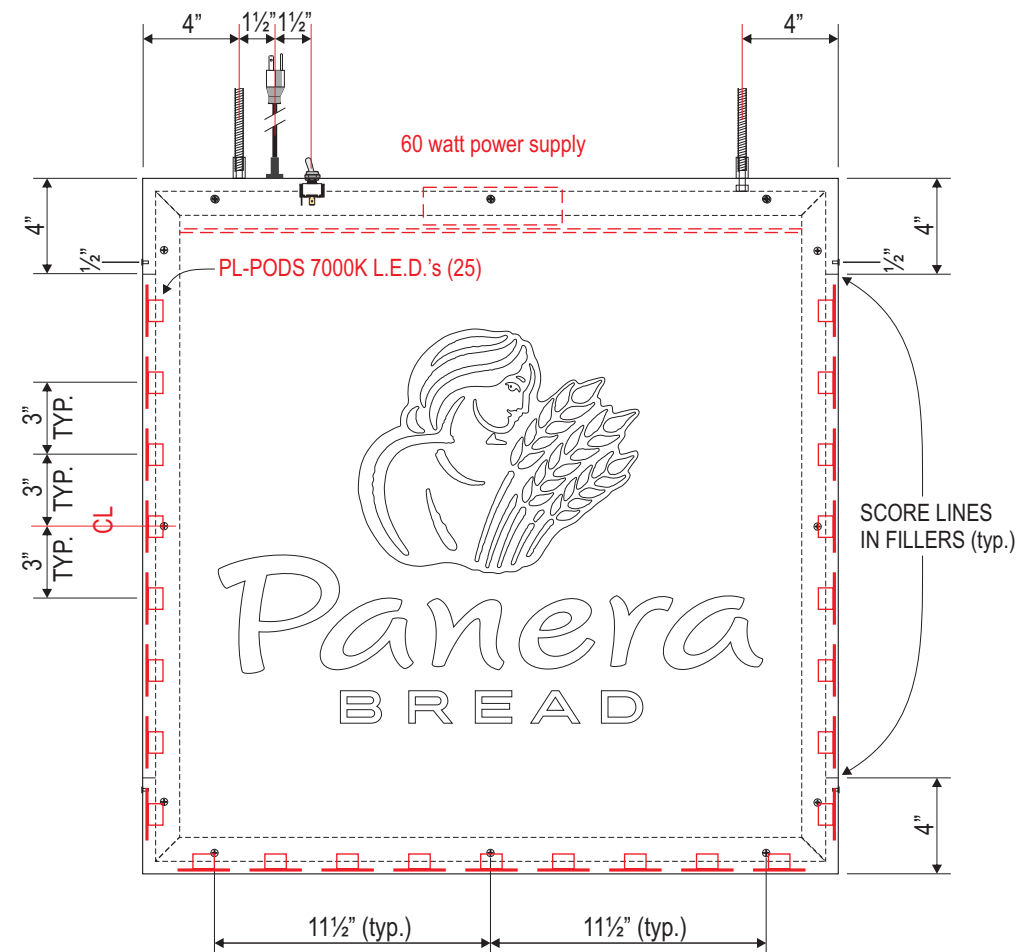
- Custom 1" Wide Aluminum Angle Trim to Retain Faces
- Trim Secured to Flange in Face Side of Frame with (12) 8-32 x 1" Long Flat Head Brass Sheet Metal Screws.
- .177" #7328 White Optix DL Medium Impact Acrylic Face with 1st Surface Digital Print and Matte Clear Overlamine.

BACK SPECS:

- 1/8" Thick Aluminum Back.
- Secure to the Frame with 8-32 x 1/2" Long Flat Head Brass Sheet Metal Screws.
- Paint Back Side of Aluminum Back ZAP White.
- Paint Face and Edge of MP02545 Cream, RAL 9001, Satin Finish per Formula.
- 1st Surface Digitally Printed Vinyl Graphics with Satin Overlamine, All Cut with Background Removed.

FRAME SPECS:

- 2 1/4" x 1 1/4", Finished OD, x 1/8" Brakeformed Aluminum Channel Frame.
- End Fillers to receive a "Scribe" on the Fillers and Wrapping the Flanges 4" in from Each End.
- Install Toggle Switch to Right of Cord Grip 1 1/2"+.
- PRINCIPAL PL-QPLOP2PD2 PODS 7000K LEDS on the Inside of the End and Bottom Fillers Only on 3"+ Centers.
- (1) 60 Watt Class 2 Power Supply mounted to Aluminum Plate w/ (2) 6-32 x 1/2" Welded Studs. Plate is Spot Welded into the Top Channel.
- 120 VAC / .1 Amp.
- Continuous Brake Formed .040 White Aluminum Raceway Cover secured to the Back Flange with Flat Head Screws.
- Paint the Outside MP29527 Midsummer Night per Formula, Satin Finish.



ARTWORK EXCLUSIVE PROPERTY OF

SINCE 1917

MANDEVILLE SIGN
making your mark.

676 GEORGE WASHINGTON HIGHWAY
LINCOLN, RI 02865-4255

401-334-9100 401-334-7799
PHONE FAX

WEB www.mandevillesign.com

APPROVALS	
Signatures Required Before Release to Production	
Engineering	
BY	DATE
Sales	
BY	DATE
Estimating	
BY	DATE
Production	
BY	DATE
Quality Control	
BY	DATE

VM PRODUCT NUMBER(S)

51274.1

WORK ORDER NUMBER(S)

REVISIONS			
NO.	BY	DESCRIPTION	DATE
1	XX		
2			
3			
4			
5			
6			
7			
8			
9			
10			
11			
12			

CLIENT

Panera BREAD

STORE NUMBER **#3409**

75-77 Fort Eddy Road
Concord, NH 03301

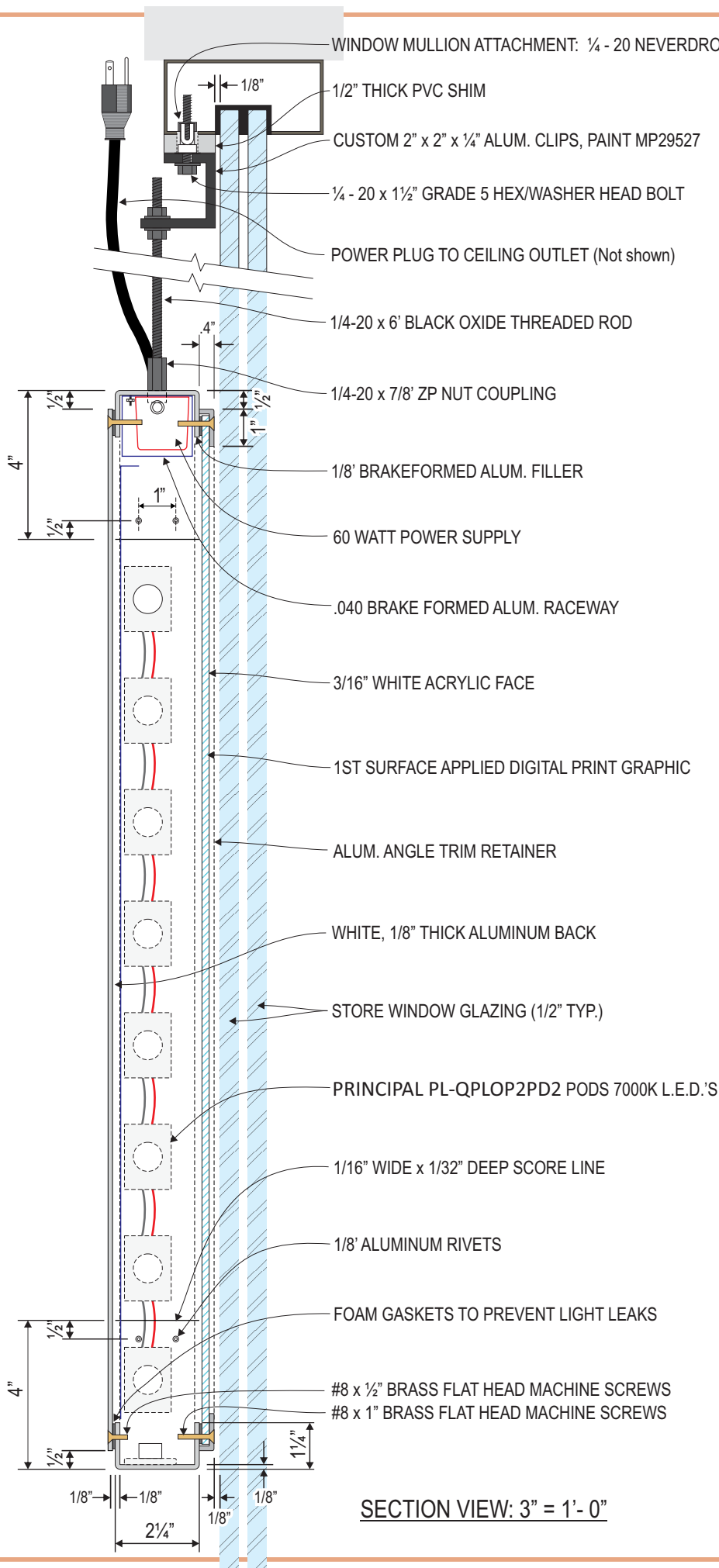
LOCATION

PROJECT MANAGER **JIM MANDEVILLE**

CHECKED BY	DATE	JM	10/17/19
SCALE	NOTED	ARTIST	DATE

51274.4

DRAWING NAME



- MANUFACTURE (1) 29" X 29" X 2 7/8" DEEP D/F INTERIOR ILLUMINATED HANGING WINDOW SIGN:

- FACE IS ILLUMINATED AND BACK IS REMOVABLE AND OPAQUE.
- 60 WATT SELF CONTAINED POWER SUPPLY.
- SWITCH AND 6'-7" 3 PRONG POWER CORD OUT TOP.
- INTERIOR SIGN / NO WEEP HOLES.
- SUPPLY (2) 6' LENGTHS OF 1/4-20 BLACK OXIDE THREADED ROD AND (2) ALUMINUM PAINTED ANGLE CLIPS FOR INSTALLATION.

- FACE SPECS:

- Custom 1" Wide Aluminum Angle Trim to Retain Faces
- Trim Secured to Flange in Face Side of Frame with (12) 8-32 x 1" Long Flat Head Brass Sheet Metal Screws.
- .177" #7328 White Optix DL Medium Impact Acrylic Face with 1st Surface Digital Print and Matte Clear Overlamineate. Pantone 7403 CP Mother Bread
- logo with Pantone 476 CP details, Pantone 5757 CP opaque background

- BACK SPECS:

- 1/8" Thick Aluminum Back.
- Secure to the Frame with 8-32 x 1/2" Long Flat Head Brass Sheet Metal Screws.
- Paint Back Side of Aluminum Back ZAP White.
- Paint Face and Edge of MP02545 Cream, RAL 9001, Satin Finish per Formula.
- 1st Surface Digitally Printed Vinyl Graphics with Satin Overlamineate, All Cut with Background Removed.

- FRAME SPECS:

- 2 1/4" x 1 1/4", Finished OD, x 1/8" Brakeformed Aluminum Channel Frame.
- End Fillers to receive a "Scribe" on the Fillers and Wrapping the Flanges 4" in from Each End.
- Install (2) 1/8" Aluminum Rivets 1/2" in from Scribe Line and 1" C/C.
- Top Filler to have (2) 5/16" Holes 4" in from Each End.
- Install 1/4-20 x 5/8" Long ZP Truss Head Screws from the underside and install 1/4-20 x 7/8" Long ZP Nut Couplings.
- (2) 1" Diameter Breather Vents 2" in from Each End. Drill 7/8" Hole.
- Drill 5/8" Hole 5 1/2" in from the Left end & Install (1) Continuous Flex Snap -In Cord Grip with 18 AWG x 6'-7" Long NEMA 5-15 Power Cord.
- Install Toggle Switch to Right of Cord Grip 1 1/2"+.
- Tape and Silicone PL- PODS 7000K LEDS to the Inside of the End and Bottom Fillers Only on 3"+ Centers.
- (1) 60 Watt Class 2 Power Supply mounted to Aluminum Plate w/ (2) 6-32 x 1/2" Welded Studs. Plate is Spot Welded into the Top Channel.
- 120 VAC / .1 Amp.
- Continuous Brake Formed .040 White Aluminum Raceway Cover secured to the Back Flange with Flat Head Screws. (Seam in Center with Backer Plate for Ease of Removal)
- Paint the Outside MP29527 Midsummer Night per Formula, Satin Finish.

- Supply Bottle of Touchup Paint.
- (2) 1/4-20 x 6' Long Unpainted Black Oxide Threaded Rods.
- (2) 2" x 2" x 1/4" x 2" Long Custom Cut Aluminum Square Tube Hanging Clips with (2) 5/16" Mounting Holes per Drawing.
- (2) 1/2" x 1 3/8" x 2" PVC Shims with (1) 9/16" Clearance Hole for the Neverdrop Toggle.
- Paint Clips and Shims MP29527 Midsummer Night per Formula, Satin Finish for Installation.
- (4) Each 1/4" Flat Washers and Hex Nuts.
- (2) Each 1/4-20 Never Drop Anchors with 1/2" removed from (1) "Ear.
- (2) Each 1/4-20 x 1 1/2" Long Fully Threaded Grade 5 Flanged Hex Head Screws.

ARTWORK EXCLUSIVE PROPERTY OF

SINCE 1917

MANDEVILLE SIGN
making your mark.

676 GEORGE WASHINGTON HIGHWAY
LINCOLN, RI 02865-4255

401-334-9100 401-334-7799
PHONE FAX

WEB www.mandevillesign.com

APPROVALS	
Signatures Required Before Release to Production	
Engineering	
BY	DATE
Sales	
BY	DATE
Estimating	
BY	DATE
Production	
BY	DATE
Quality Control	
BY	DATE

VM PRODUCT NUMBER(S)

51274.1

WORK ORDER NUMBER(S)

REVISIONS			
NO.	BY	DESCRIPTION	DATE
1	XX		
2			
3			
4			
5			
6			
7			
8			
9			
10			
11			
12			

CLIENT

STORE NUMBER **#3409**

**75-77 Fort Eddy Road
Concord, NH 03301**

LOCATION
PROJECT MANAGER **JIM MANDEVILLE**

CHECKED BY DATE JM 10/17/19
ARTIST DATE

SCALE **NOTED**

51274.5

DRAWING NAME



REPLACE FACES IN
EXISTING MULTI TENANT
SIGN:
SIZES AND SPECS TBD



PANTONE 5757 CP
CMYK: 34 / 12 / 91 / 54
RGB: 110 / 116 / 47
HEX: 6E742F



PANTONE 7403 CP
CMYK: 1 / 11 / 58 / 2
RGB: 237 / 210 / 124
HEX: EDD27C



PANTONE 476 CP
CMYK: 30 / 71 / 75 / 81
RGB: 84 / 60 / 46
HEX: 543C2E

SINCE

ARTWORK EXCLUSIVE PROPERTY OF

1917

MANDEVILLE SIGN

making your mark.

676 GEORGE WASHINGTON HIGHWAY
LINCOLN, RI 02865-4255

401-334-9100401-334-7799

PHONEFAX

WEBwww.mandevillesign.com

APPROVALS

Signatures Required Before Release to Production

Engineering

BYDATE

Sales

BYDATE

Estimating

BYDATE

Production

BYDATE

Quality Control

BYDATE

VM PRODUCT NUMBER(S)

51274.1

WORK ORDER NUMBER(S)

REVISIONS

NO.	BY	DESCRIPTION	DATE
1	XX		
2			
3			
4			
5			
6			
7			
8			
9			
10			
11			
12			

CLIENT

#3409

STORE NUMBER

75-77 Fort Eddy Road
Concord, NH 03301

LOCATION

JIM MANDEVILLE

PROJECT MANAGER


CHECKED BY	DATE	JM	10/17/19
		ARTIST	DATE

NOTED

51274.4

SCALE

DRAWING NAME

<div><div>Panera BREAD</div><div></div></div>	Panera Bread Café #3409- Concord, NH								
	Signage Responsibility Matrix								
	Indicate QUANTITY in the appropriate column below for each item								
	By Sign Vendor	By Panera GC	By Landlord/ others	N/A - none proposed or required	Description	By Sign Vendor	By Panera GC	By Landlord/ others	N/A - none proposed or required
Building Mounted Signage - Channel Letters	2				Drive-thru Clearance Bar				0
Building Mounted Signage - with Background panels				0	Drive-thru Clearance bar Foundation				0
"Drive-Thru" Cabinet				0	Drive-thru Canopy and Speaker Post				0
Blade Sign				0	Drive-thru Canopy Foundation				0
Logo sign - window hung				0	Drive-thru Preview Board				0
Monument Sign (Cabinet or channel letters)				0	Drive-thru Preview Board Foundation				0
Monument Sign Structure and Finish Material (i.e. masonry finish)				0	Drive-thru Menu Board				0
Monument Sign Foundation				0	Drive-thru Menu Board Foundation				0
Pylon Sign				0	Drive-thru Thank you/ Directional Signs				0
Pylon Sign Foundation				0	Drive-thru Thank you/ Directional Sign Foundations				0
Panera panels for multi-tenant sign - FACES ONLY	2				Fabric/Vinyl Awnings	0			
Rapid Pick-Up Signs				0	Awning Engineering Drawing(s)	TBD			
Concrete Bollard & U-Channel Posts to receive Rapid Pick-Up Signs				0	Architectural Patio Structure				
Drive Thru Waiting Sign				0	Architectural Building Canopies				
Concrete Bollard & U-Channel Post to receive Drive Thru Waiting Sign				0	Other (Describe fully)				

SINCE



1917

MANDENVILLE SIGN

making your mark.

676 GEORGE WASHINGTON HIGHWAY
LINCOLN, RI 02865-4255

PHONE 401-334-9100

FAX 401-334-7799

WEB www.mandevillesign.com

APPROVALS

Signatures Required Before Release to Production

Engineering	DATE
Sales	DATE
Production	DATE

All electrical signs shall comply with the National Electric Code (Article 600) and be manufactured according to Underwriters Laboratories U.L. 48 standards and labeled accordingly.

REVISIONS

NO.	BY	DESCRIPTION	DATE
1	XX		
2			
3			
4			
5			
6			

CUSTOMER

Panera
BREAD



STORE# 3409

75-77 Fort Eddy Road
Concord, NH 03301

LOCATION

51274.1

WORK ORDER NUMBER(S)

PROJECT MANAGER CARLA

JM

ARTIST

10/17/19

DATE

51274.1

DRAWING NAME