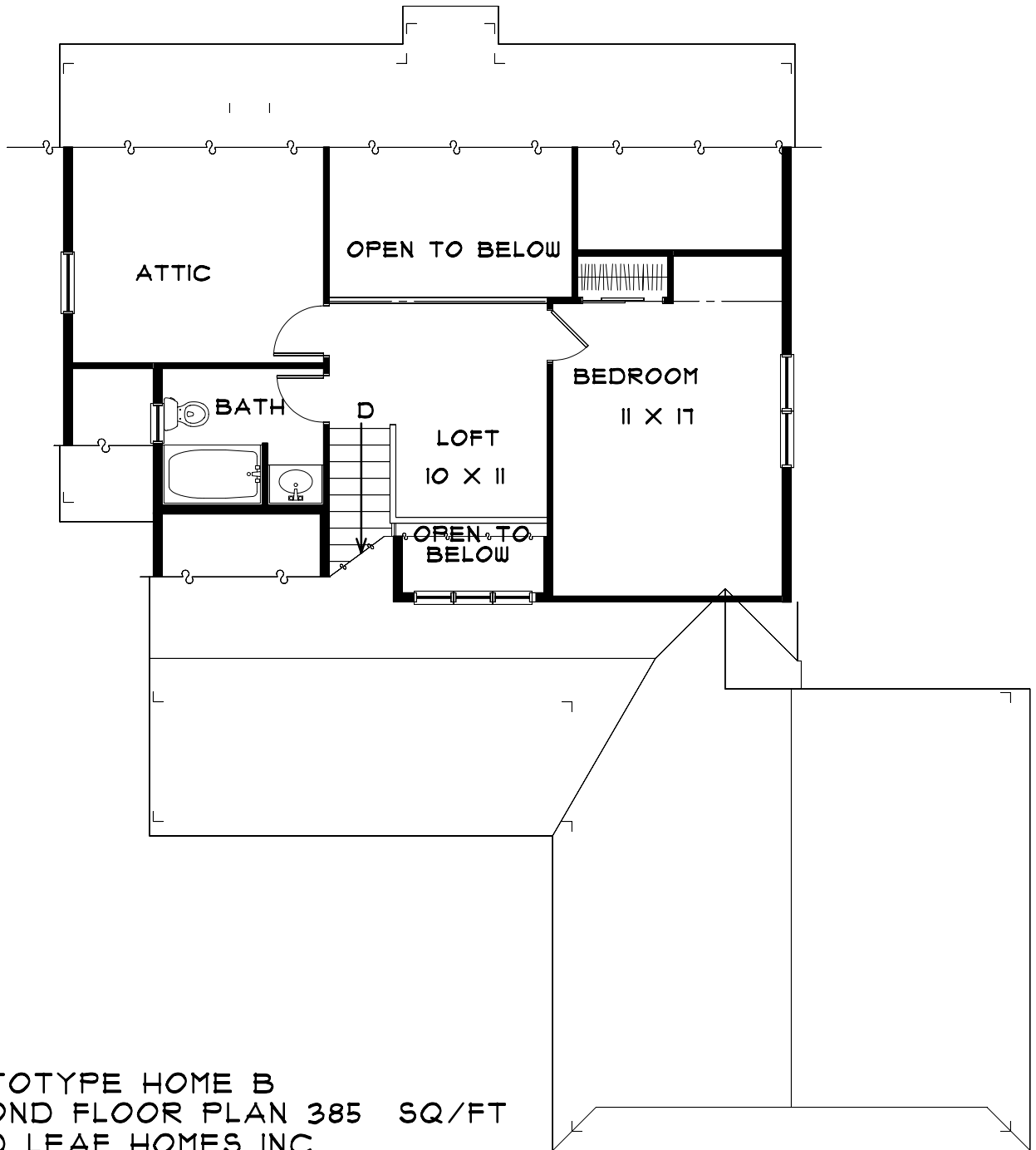


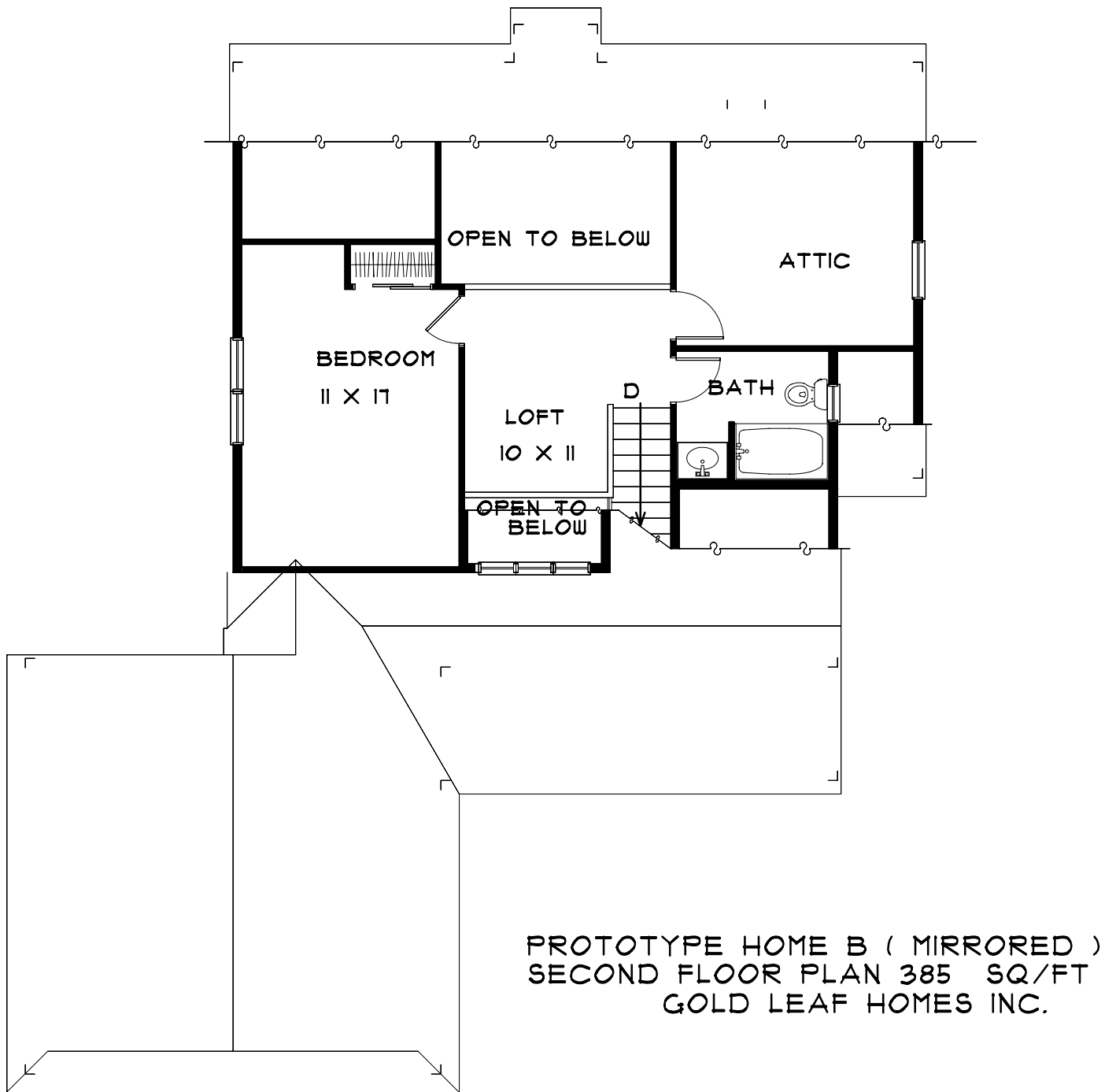
PROTOTYPE HOME B
 FIRST FLOOR PLAN 1,132 SQ/FT
 GOLD LEAF HOMES INC.

Artist's renderings and floor plans are for illustration purposes only and may reflect certain optional items. All dimensions shown are approximate and are subject to construction variances, tolerances and field conditions. Seller reserves the right to make changes to the plans at any time.

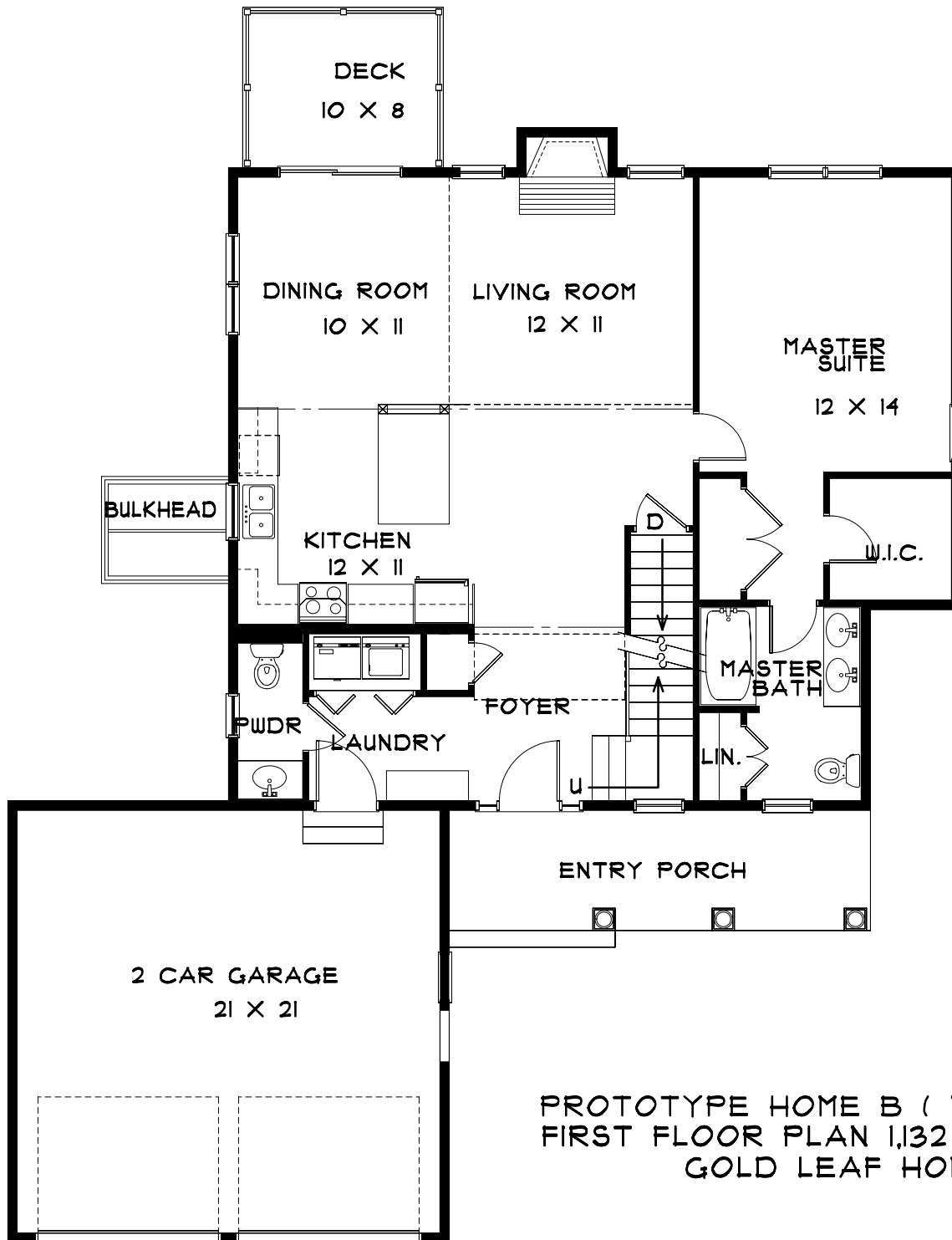


PROTOTYPE HOME B
SECOND FLOOR PLAN 385 SQ/FT
GOLD LEAF HOMES INC.

Artist's renderings and floor plans are for illustration purposes only and may reflect certain optional items. All dimensions shown are approximate and are subject to construction variances, tolerances and field conditions. Seller reserves the right to make changes to the plans at any time.



Artist's renderings and floor plans are for illustration purposes only and may reflect certain optional items. All dimensions shown are approximate and are subject to construction variances, tolerances and field conditions. Seller reserves the right to make changes to the plans at any time.



PROTOTYPE HOME B (MIRRORED)
 FIRST FLOOR PLAN 1,132 SQ/FT
 GOLD LEAF HOMES INC.

Artist's renderings and floor plans are for illustration purposes only and may reflect certain optional items. All dimensions shown are approximate and are subject to construction variances, tolerances and field conditions. Seller reserves the right to make changes to the plans at any time.

Glen Ellen Condominiums - Prototypical House Architecture





GLEN ELLEN

at Concord, New Hampshire

prepared for

SILVER LEAF PROPERTIES, LLC

**Woodland
Design Group**
5 Dartmouth Drive, Suite 301, Andover, NH 03001
Civil Engineering - Land Planning - Transportation Engineering
Phone 603-641-9300 Fax 603-641-9350

**KNOWLES
DESIGN**
landscape architecture
graphics, renderings & design solutions
33A Lindsey Way, Goffstown, NH 03045 603-497-4212



GLEN ELLEN

at Concord, New Hampshire
prepared for
SILVER LEAF PROPERTIES, LLC