


NOT ISSUED FOR  
CONSTRUCTION

AMBULATORY  
HEALTH CARE  
BUILDING

CONCORD HOSPITAL

250 PLEASANT STREET  
CONCORD, NEW HAMPSHIRE

	03/01/2018	RESPONSE TO CITY COMMENTS
NO.	DATE	DESCRIPTION

REVISIONS

0 100' 200'

GRAPHIC SCALE

DATE:	FEBRUARY 2018
NOBIS PROJECT NO.	85060.06
DRAWN BY:	SPM
CHECKED BY:	JCN
CAD DRAWING FILE:	85060.06-C-200-SITE.dwg

## OVERALL CAMPUS PLAN

SHEET  
C-1



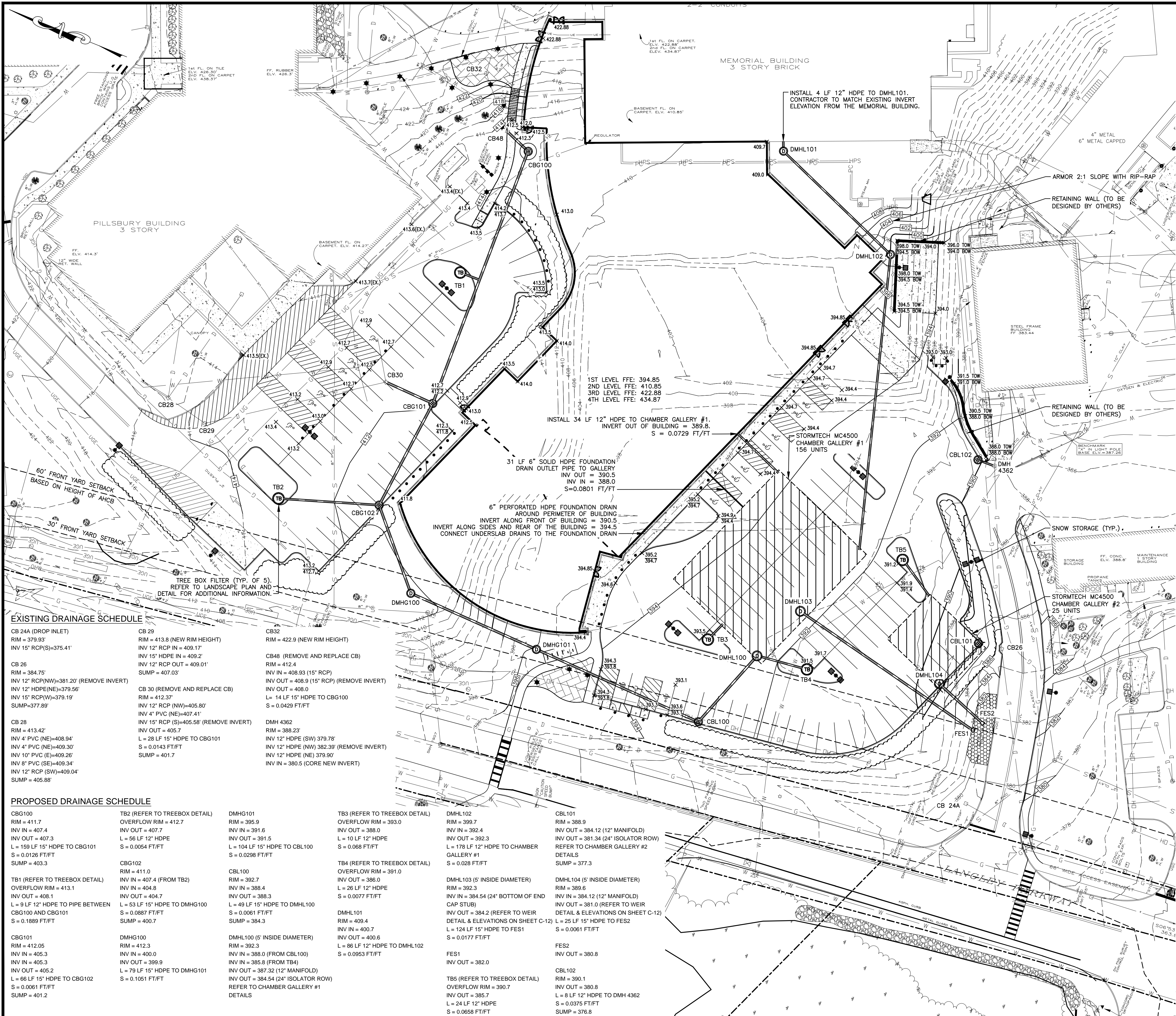
J:\85060.06 - Concord Hospital Medical Office Building\CAD\dwg\85060.06-C-200-SITE.dwg 3/1/2018 11:33 AM



<div> Engineering a Sustainable Future Nobis Engineering, Inc. 18 Chenell Drive Concord, NH 03301 T(603) 224-4182 www.nobiseng.com Client - Focused, Employee - Owned</div>		
<div></div>		
NOT ISSUED FOR CONSTRUCTION		
AMBULATORY HEALTH CARE BUILDING		
CONCORD HOSPITAL		
250 PLEASANT STREET CONCORD, NEW HAMPSHIRE		
	03/01/2018	RESPONSE TO CITY COMMENTS
NO.	DATE	DESCRIPTION
REVISIONS		
<div> GRAPHIC SCALE</div>		
DATE:		FEBRUARY 2018
NOBIS PROJECT NO.		85060.06
DRAWN BY:		SPM
CHECKED BY:		JCN
CAD DRAWING FILE:		85060.06-C-200-SITE.dwg
SHEET TITLE		
SITE PLAN		
SHEET C-3		



J:\85060.06 - Concord Hospital Medical Office Building\CAD.dwg 85060.06-C-300-G&D.dwg 3/1/2018 11:35 AM

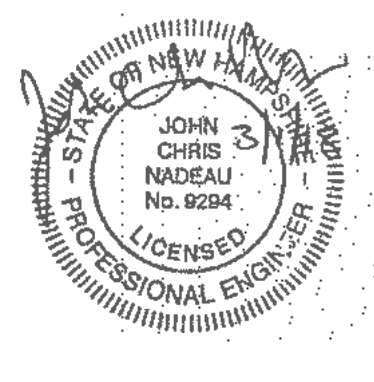


- NOTES:
1. REFER TO SURVEYOR'S PLAN FOR BASE PLAN REFERENCES AND ADDITIONAL NOTES.
  2. ALL ELEVATIONS SHOWN ARE IN REFERENCE TO THE SURVEY PLAN AND MUST BE VERIFIED BY THE GENERAL CONTRACTOR PRIOR TO THE START OF CONSTRUCTION.
  3. CONTRACTOR WILL NOTIFY OWNER & ENGINEER IMMEDIATELY IF SITE CONDITIONS DIFFER FROM WHAT IS SHOWN ON PLAN.
  4. SPOT ELEVATIONS SHOWN AT BUILDING CORNERS ARE PROPOSED GROUND ELEVATIONS.
  5. FINISH WALK AND CURB ELEVATIONS WILL BE 6" ABOVE FINISH PAVEMENT.
  6. ALL ELEVATIONS SHOWN ARE IN REFERENCE TO THE BENCHMARK AND MUST BE VERIFIED BY THE GENERAL CONTRACTOR AT GROUND BREAK.
  7. LOCATIONS AND ELEVATIONS OF EXISTING UTILITIES ARE APPROXIMATE ONLY AND ARE BASED ON RECORDS FROM THE UTILITY COMPANIES AND FIELD MEASUREMENTS OF VISIBLE STRUCTURES. THE CONTRACTOR IS RESPONSIBLE FOR LOCATING ALL UTILITIES PRIOR TO CONSTRUCTION AND WILL NOTIFY ENGINEER AND OWNER IMMEDIATELY OF ANY CONFLICTS.
  8. ALL WORK ON SITE, ALL UTILITY WORK AND ALL WORK WITH CITY R.O.W. WILL BE PERFORMED IN ACCORDANCE WITH THE CITY OF CONCORD SPECIFICATIONS, LATEST EDITION.
  9. THE CONTRACTOR IS RESPONSIBLE FOR CONTACTING DIG SAFE (1-888-DIG-SAFE) AT LEAST 72 HOURS PRIOR TO THE COMMENCEMENT OF WORK. THE CONTRACTOR WILL COORDINATE WORK WITH THE CITY FIRE, POLICE, AND COMMUNITY DEVELOPMENT DEPARTMENTS.
  10. ALL STORM DRAIN PIPING WITH LESS THAN 3.0 FEET OF COVER WILL BE OVERLAID WITH 2" THICK RIGID INSULATION FOR THE FULL WIDTH OF PIPE TRENCH.
  11. REFER TO SHEET G-1 FOR GENERAL NOTES AND LEGEND.
  12. CONTRACTOR TO PERFORM CONFIRMATORY TEST PITS DURING CONSTRUCTION IN THE FOOTPRINT OF THE CHAMBER GALLERIES. NOBIS ENGINEERING WILL OBSERVE THE TEST PITS TO CONFIRM DEPTH OF ESTIMATED SEASONAL HIGH GROUNDWATER. IF THERE IS LESS THAN 4 FEET OF SEPARATION BETWEEN THE BOTTOM OF THE CHAMBER GALLERY SYSTEM AND THE ESTIMATED SEASONAL HIGH GROUNDWATER TABLE THE CHAMBER GALLERIES MUST BE LINED WITH A 30-MIL LINER AS SPECIFIED ON SHEETS C-12 AND C-13.



Engineering a Sustainable Future  
Nobis Engineering, Inc.  
18 Chenell Drive  
Concord, NH 03301  
T(603) 224-4182  
www.nobiseng.com

Client - Focused, Employee - Owned

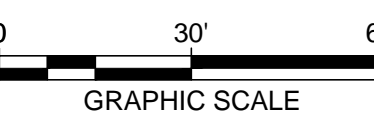


NOT ISSUED FOR  
CONSTRUCTION

AMBULATORY  
HEALTH CARE  
BUILDING  
  
CONCORD HOSPITAL  
  
250 PLEASANT STREET  
CONCORD, NEW HAMPSHIRE

NO.	DATE	DESCRIPTION
1	03/01/2018	RESPONSE TO CITY COMMENTS

REVISIONS



DATE:	FEBRUARY 2018
NOBIS PROJECT NO.	85060.06
DRAWN BY:	SPM
CHECKED BY:	JCN
CAD DRAWING FILE:	85060.06-C-300-G&D.dwg
SHEET TITLE	

GRADING &  
DRAINAGE PLAN

SHEET  
C-4





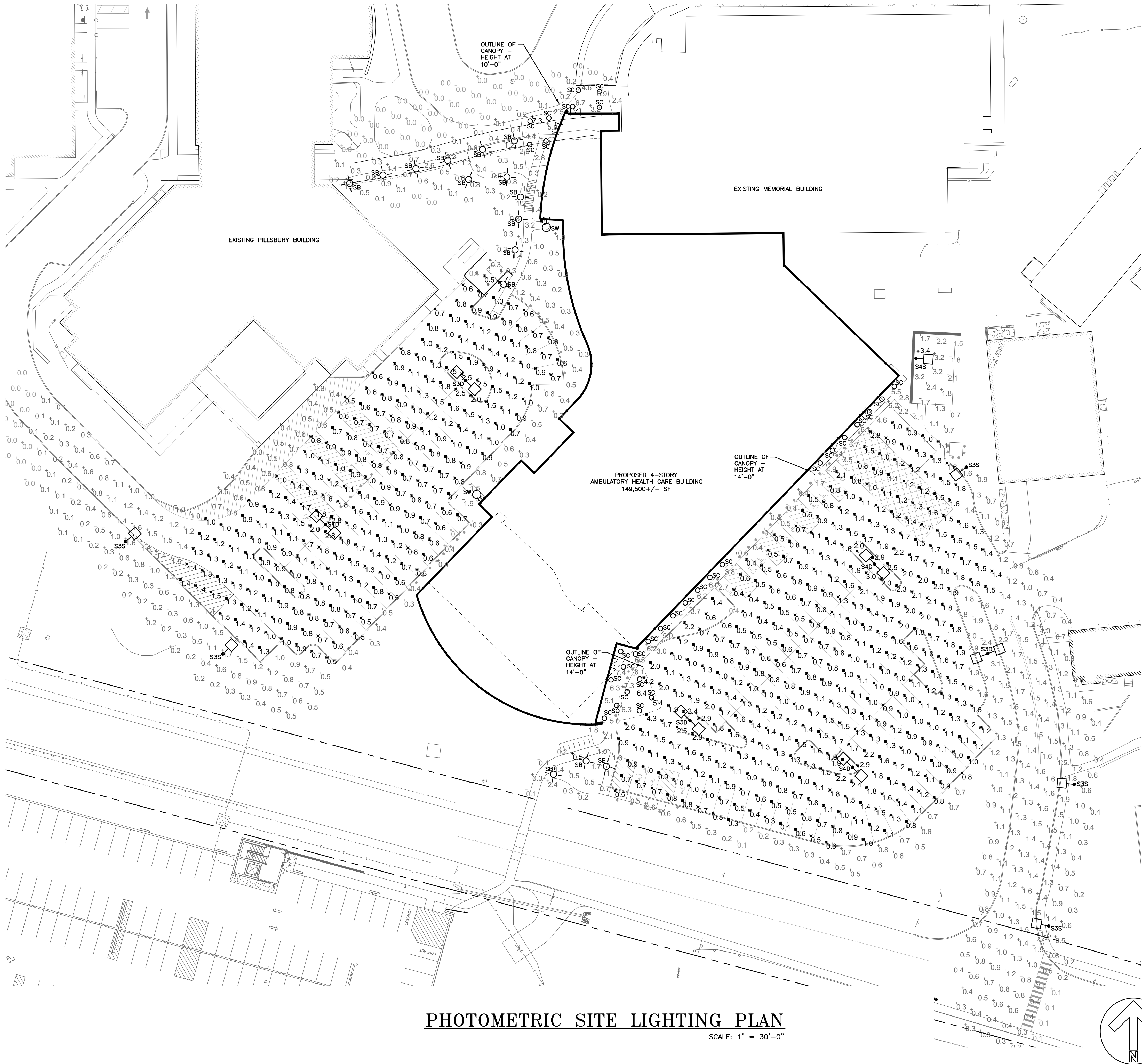












PHOTOMETRIC SITE LIGHTING PLAN

SCALE: 1" = 30'-0"

**D-Series Size 1**  
LED Area Luminaire

**Specifications**

EPA: 1.01 ft<sup>2</sup> (0.94 m<sup>2</sup>)

Length: 33" (843 mm)

Width: 13" (330 mm)

Height: 7-1/2" (190 mm)

Weight (max): 27 lbs (12.3 kg)

TYPES S3D, S3S & S4D

**D-Series Size 0**  
LED Area Luminaire

**Specifications**

EPA: 0.95 ft<sup>2</sup> (0.88 m<sup>2</sup>)

Length: 28" (711 mm)

Width: 13" (330 mm)

Height: 7" (178 mm)

Weight (max): 16 lbs (7.3 kg)

TYPE S4S

**OLWX1 LED**  
LED Wall Luminaire

**TYPE SW**

**Specifications**

Width: 7-1/2" (190 mm)

Height: 6" (152 mm)

Depth: 3" (76 mm)

Weight: 5 lbs (2.3 kg)

**ABB ARBOR**  
Invue BOLLARD

**TYPE SB**

**NEW CONSTRUCTION**

**TYPE SC**

Symbol	Label	Quantity	Manufacturer	Catalog Number	Description	Lamp	Number Lamps	Lumens Per Lamp	Light Loss Factor	Wattage
	S3D	3	Lithonia Lighting	DSX1 LED P2 40K T3M MVOLT	2 luminaires mounted to one pole - bottom @ 25' Type 3 med. distribution, 4000K	LED	1	8641	0.85	140
	S3S	5	Lithonia Lighting	DSX1 LED P2 40K T3M MVOLT	1 luminaire mounted to one pole - bottom @ 25' Type 3 med. distribution, 4000K	LED	1	8641	0.85	70
	S4D	3	Lithonia Lighting	DSX1 LED P2 40K T3TM MVOLT	2 luminaires mounted to one pole - bottom @ 25' Forward throw medium distribution, 4000K	LED	1	8895	0.85	140
	S4S	1	Lithonia Lighting	DSX0 LED P2 40K T3TM MVOLT	1 luminaire mounted to one pole - bottom @ 12' forward throw medium distribution, 4000K	LED	1	6007	0.85	49
	SW	2	Lithonia Lighting	OLWX1 LED 20W 40K DOB	Architectural wall sconce - visual comfort wide, 4000K, bottom at 9'-0" AFG	LED	1	1840	0.85	21.77
	SB	15	Eaton Invue	ABB B1 LED 42 D1 A	Arbor bollard, 4000K, asymmetric distribution, 42" high	LED	1	1283	0.85	16
	SC	32	Indy	L8 13LMAOK MVOLT G4 BOCRI ZT P	8" Diameter recessed 4000K, clear satin alzak, frosted convex glass lens recessed in canopy -	LED	1	1028	0.85	11.74

MAXIMUM MOUNTING HEIGHT FOR POLE MOUNTED LIGHT FIXTURES

THE MAXIMUM HEIGHT OF THE POLE AND LIGHT FIXTURE ABOVE FINISHED GRADE SHALL BE 25 FEET. THIS MAXIMUM HEIGHT SHALL INCLUDE THE HEIGHT OF THE EXPOSED CONCRETE LIGHT POLE BASES. TYPICAL FOR LIGHT FIXTURE TYPES S3D, S3S, S4D AND S4S.

Statistics

Description	Avg	Max	Min	Avg/Min
NORTH PARKING	1.1 fc	2.8 fc	0.4 fc	2.8:1
SOUTH PARKING	1.3 fc	7.0 fc	0.2 fc	6.5:1

**YEATON ASSOCIATES, INC.**  
66 Jackson Street  
Littleton, NH 03561  
603.444.6578  
www.yeatonassociates.com  
17040ME

CONCORD HOSPITAL M.O.B.  
PHOTOMETRIC SITE LIGHTING PLAN

CONCORD NH

DATE: 02-26-2018 DRAWN BY: DLD

SCALE: AS NOTED CHECKED BY: LJE

CONCORD HOSPITAL  
250 PLEASANT STREET  
CONCORD, NH 03301  
DRWG. NO. 1 of 1 ES-1

