



August 04, 2017

Heather Shank, City Planner  
Planning Dept.  
City of Concord  
41 Green Street  
Concord, NH 03301

**Re: Concord Hospital – Emergency Department Exhaust Duct  
Architectural Design Review & Planning Board**

Dear Heather:

Please find attached PDF documents describing the intent and design goals of the proposed Emergency Department Exhaust Duct. Our proposal is to shield the new ductwork with the same material as was used with the East Wing, 2007 Patient Tower.

Major highlights of the proposed project are:

- CMS (Centers for Medicare & Medicare Services) as well as NH Health & Human Services requires upgrades to the ED exhaust system to meet their various codes and standards.
- The proposed duct is 24” diameter, spiral stainless steel. The same regulations, ASHRE 170, require this duct go to the roof and extend ten feet above it.
- Our ED is not in compliance with current standards (2013 & 2010).
- We have investigated numerous interior pathways for this duct and it cannot be accommodated within the hospital without substantial hardship of the loss of square footage.
- We are adding no square footage to the building, only proposing an alteration to the exterior of the 1984 Patient Tower.
- Our Structural Engineer is requiring we remove the masonry veneer behind the duct in order to provide additional structural supports to both properly support the duct to the structural frame of the building (versus attachment to brick skin) as well as offset the weight of the duct work.
- We have prepared two overlays of a real photograph, one with the metal panel enclosure. The metal panel hides the removed brick and structure. The second photograph shows the ductwork with the galvanized structure and brick removed behind it. No panels involved. We prefer the metal panel option.

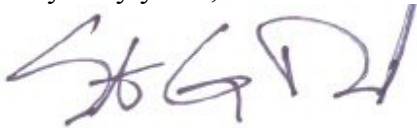
CONCORD HOSPITAL  
IS A CHARITABLE  
ORGANIZATION WHICH  
EXISTS TO MEET THE  
HEALTH NEEDS OF  
INDIVIDUALS WITHIN  
THE COMMUNITIES  
IT SERVES.

- A plan view as well as an elevation has also been prepared. All materials will be presented on a 36" x 24" boards at the Architectural Design Review Committee Meeting on Tuesday the 8<sup>th</sup>.
- In addition, the Mechanical Engineer's drawings are also included.

We are eager to receive comments and planning board review of this exterior alteration such that construction can commence before winter snows.

Please call me if you need additional information to expedite your review/approval process. I can be reached at Concord Hospital at my office number of 603-227-7001 .

Very truly yours,

A handwritten signature in purple ink, appearing to read "SGD", is written over a faint, larger version of the same signature.

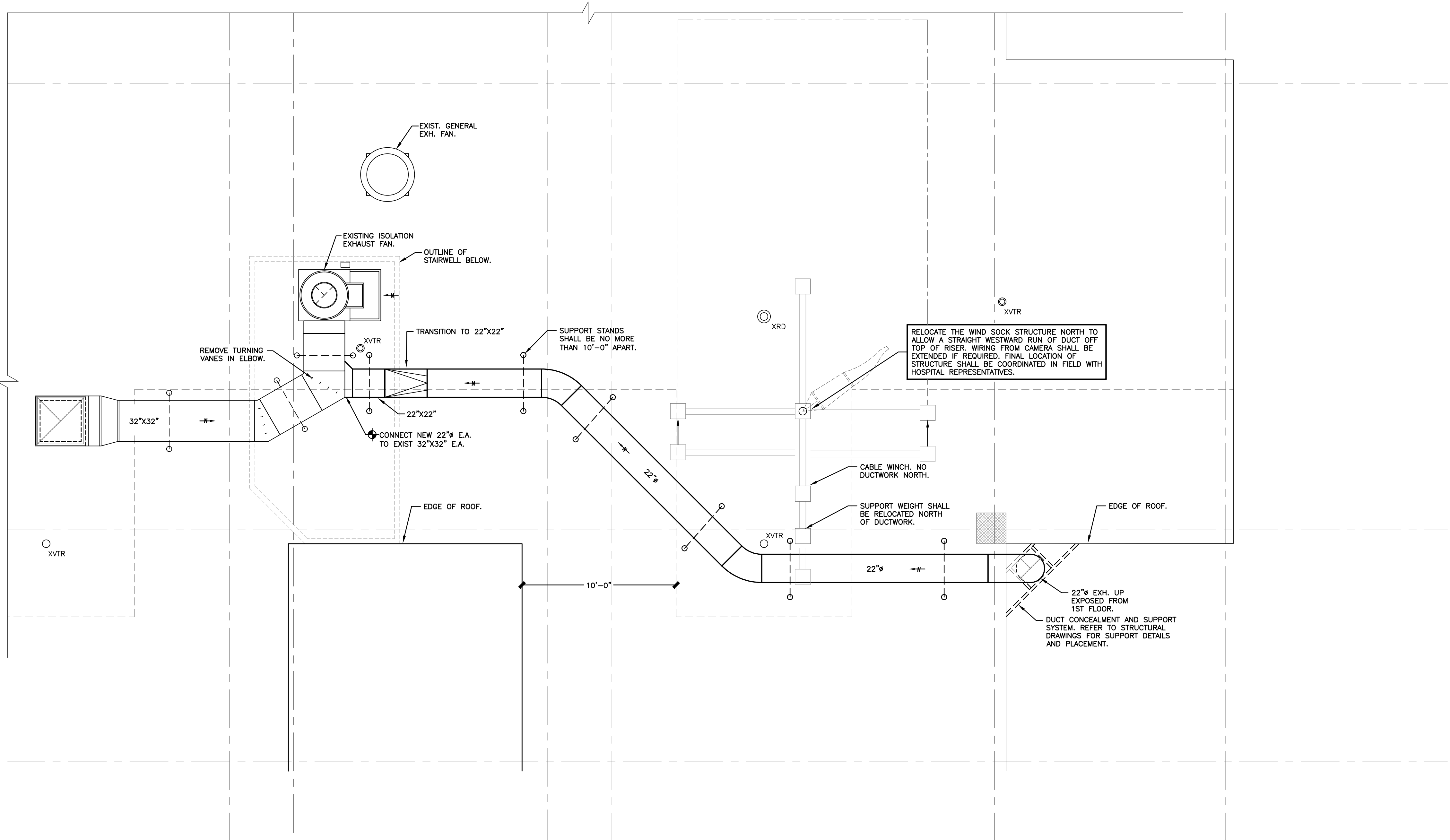
Steven G David, RA  
NH Lic #1275  
Staff Architect

Encl.

Cc; K. McCarthy, VP, Concord Hospital  
D. Luce, Dir, Concord Hospital  
S. Miller, RA, Concord Hospital  
Chris Nadeau, PE, Nobis Engineering, Inc.  
Richard Pizzi, CEO, Lavallee Brensinger Architects

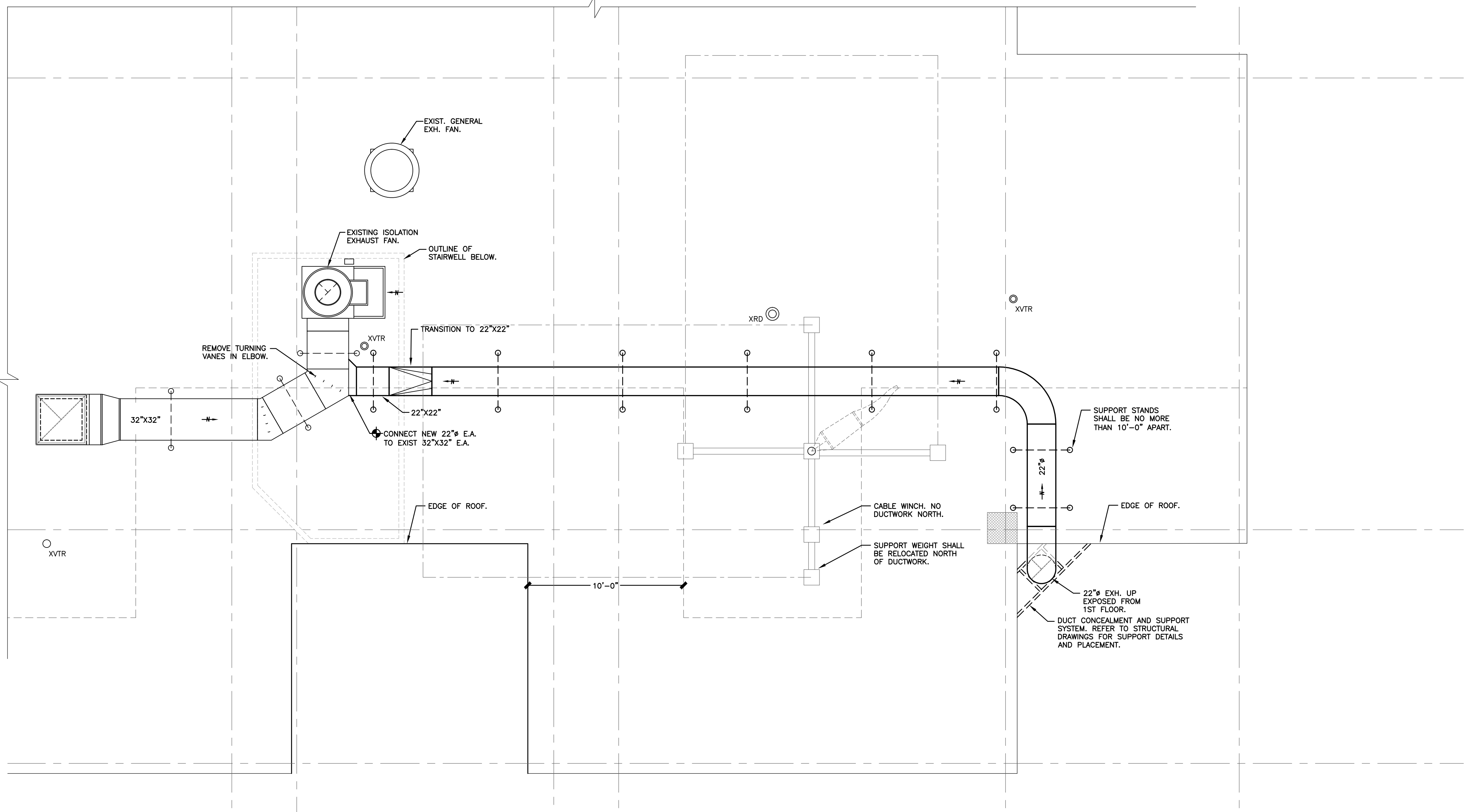
ISSUANCE RECORD

NO.	DATE	ITEMS
1	07-12-2016	SCHEMATIC DESIGN
2	11-09-2016	DESIGN DEVELOPMENT



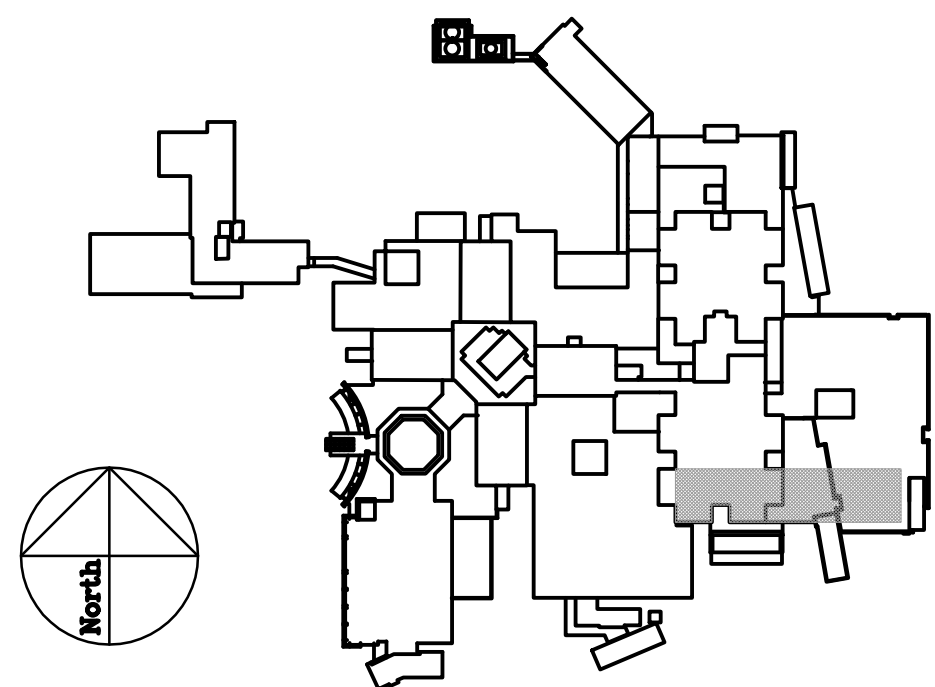
ROOF PART PLAN - DUCTWORK

SCALE: 1/4" = 1'-0"



ROOF PART PLAN - DUCTWORK

SCALE: 1/4" = 1'-0"



Key Plan

EMERGENCY DEPARTMENT  
EXHAUST ANALYSIS



Title: FIRST FLOOR PART PLAN -  
MECHANICAL

Drawn By: CSR  
Date: NOVEMBER 08, 2016  
Project No: YAI5037ME  
Approved By: WGF/WRG  
Revisions:

Confirm all existing  
conditions before  
proceeding OR before  
believing these conditions  
are true and up to date.  
Facility Plans are always  
a work in-progress!...







**CONCORD HOSPITAL**  
ER EXHAUST DUCT

METAL PANEL ENCLOSURE

SCALE:  
**LAVALLEE | BRENSINGER** ARCHITECTS

07/21/2017

CONCORD HOSPITAL

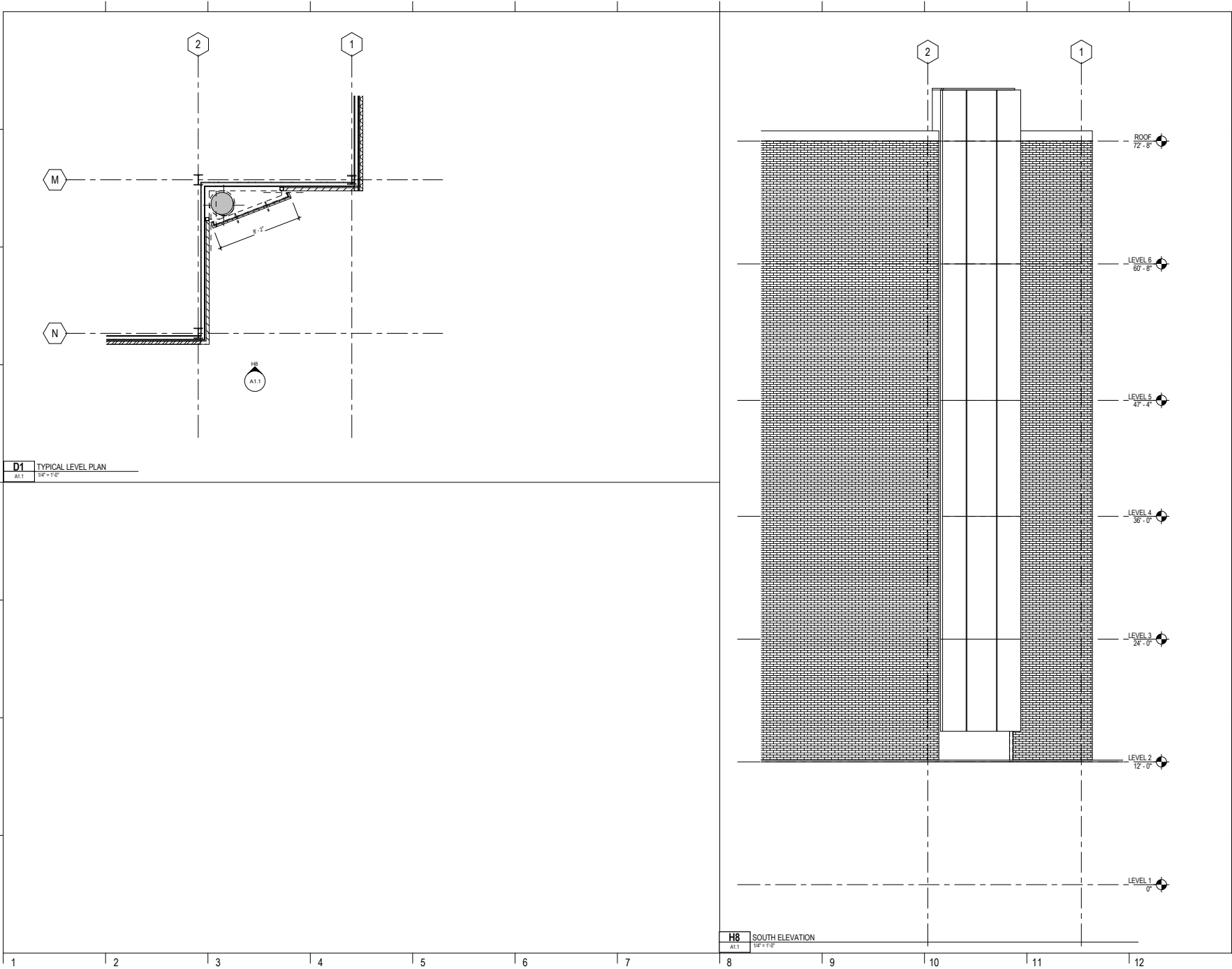
ER EXHAUST DUCT

Street, City, State, Zip

NO.	DESCRIPTION	DATE



CONTENT:	
DRAWN: BY	Author
PROJECT NO:	0000
DATE:	01/21/2017
REVISED:	
SCALE:	1/4" = 1'-0"
A1.1	
Project Phase	
COPYRIGHT © 2013 BY LAVALLEE BRENSINGER PROFESSIONAL ASSOCIATION. ALL RIGHTS RESERVED. NO REPRODUCTION WITHOUT PERMISSION.	





## CONCORD HOSPITAL

ER EXHAUST DUCT

EXPOSED DUCT

SCALE:

LAVALLEE | BRENSINGER ARCHITECTS

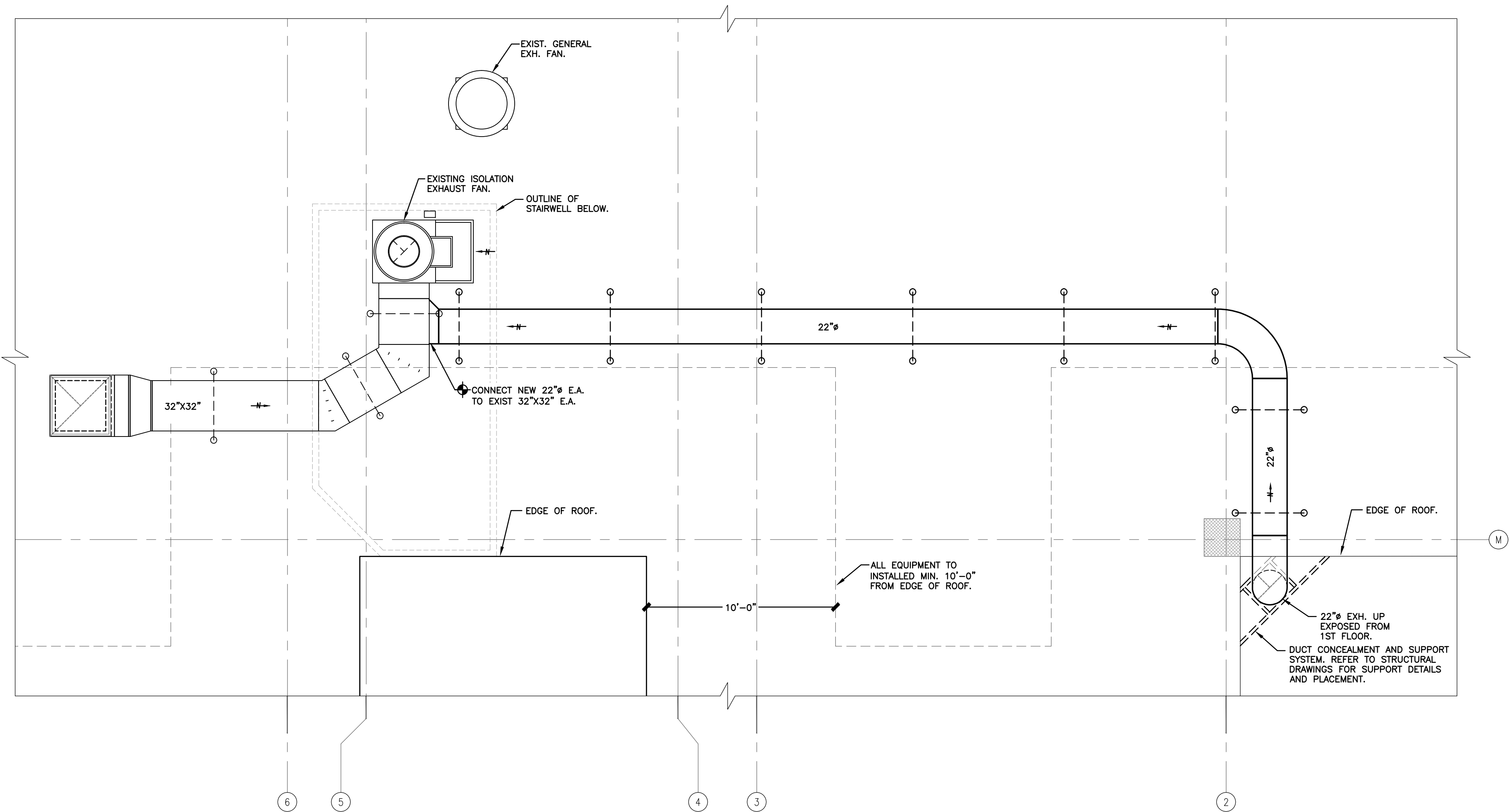
07/21/2017



ISSUANCE RECORD

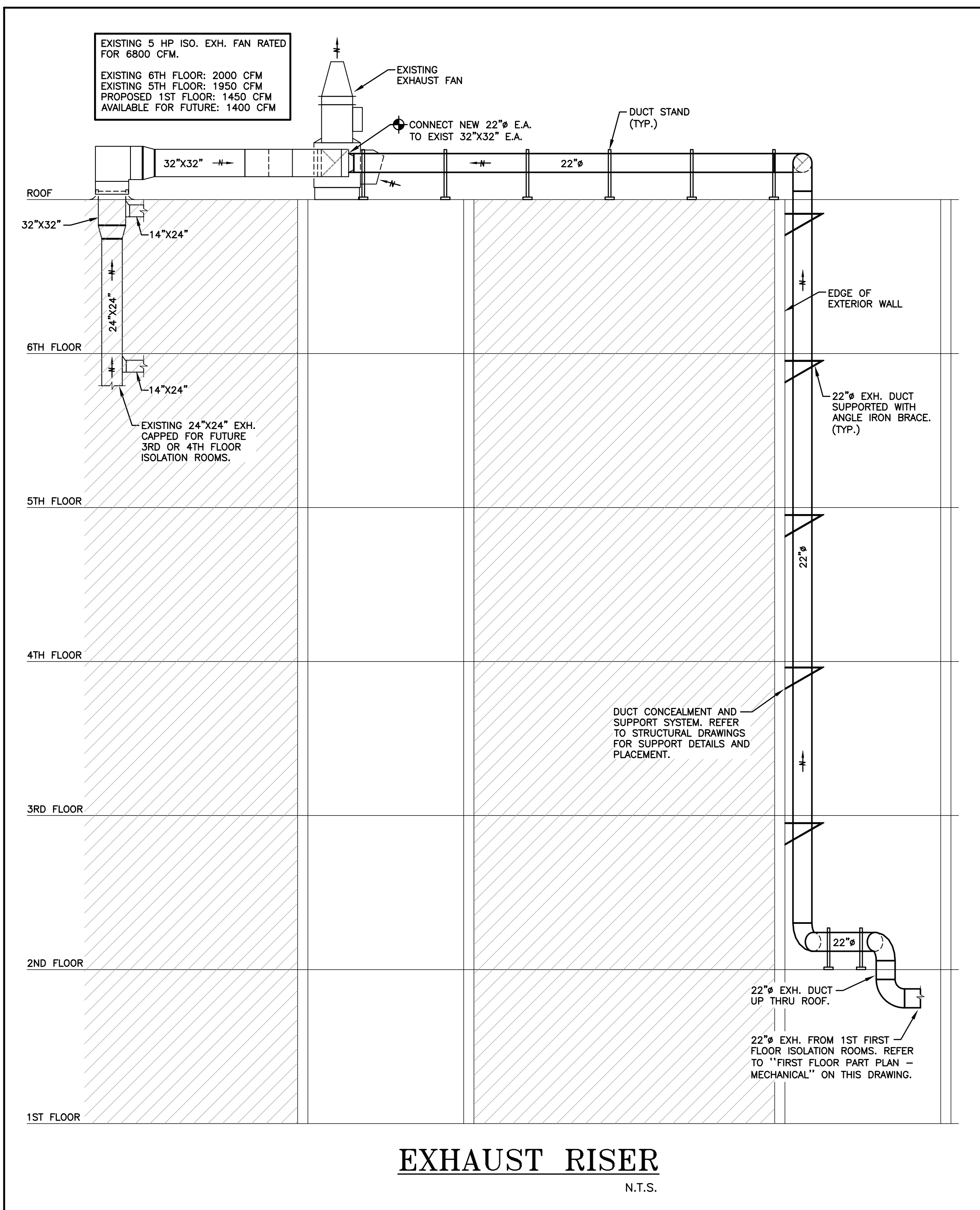
NO.	DATE	ITEMS
1	07-12-2016	SCHEMATIC DESIGN
2	11-09-2016	DESIGN DEVELOPMENT

H:\Facilities\FACILITY PROJECTS\Projects\M-E-P- ALL\HVAC  
Upgrades\ED Waiting Exhaust\Drawings\YA Drawings 11-08-16.pdf



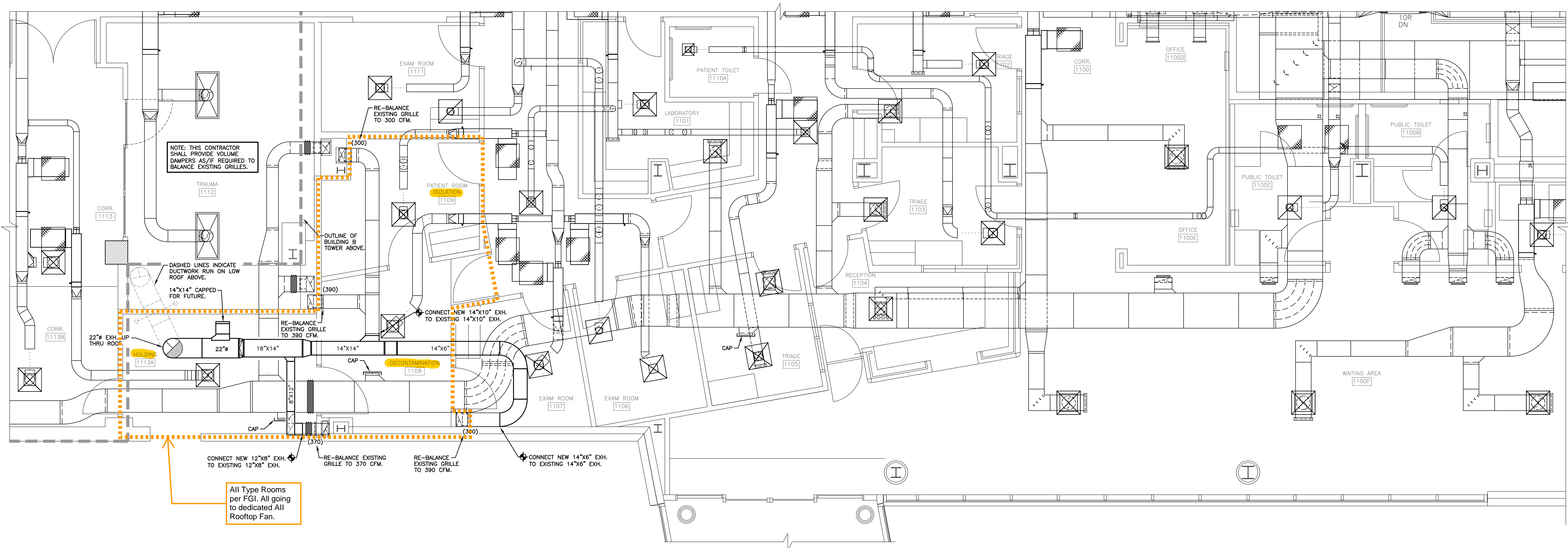
ROOF PART PLAN - DUCTWORK

SCALE: 1/4" = 1'-0"



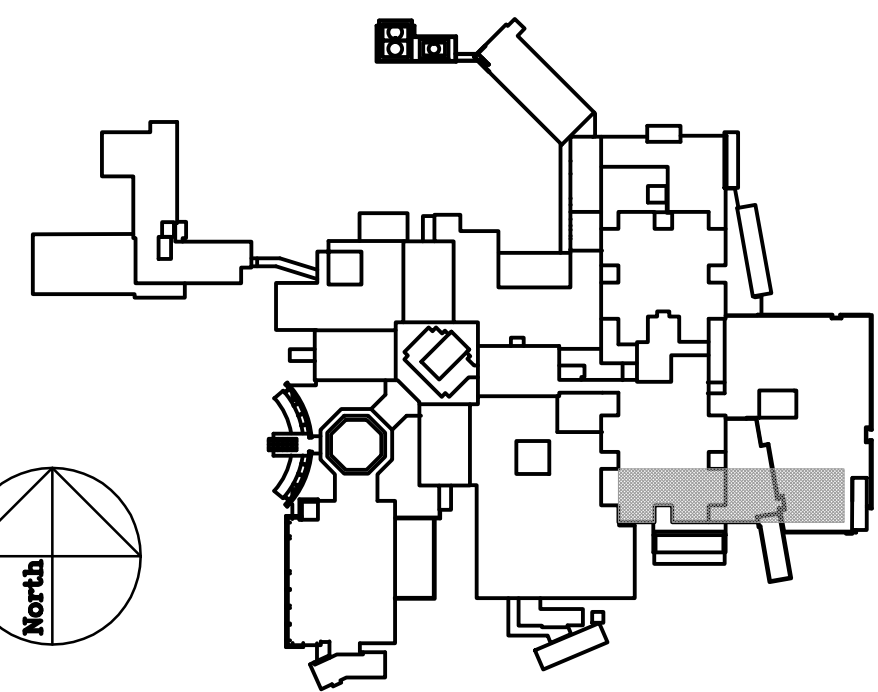
EXHAUST RISER

N.T.S.



FIRST FLOOR PART PLAN - MECHANICAL

SCALE: 1/4" = 1'-0"



Key Plan

EMERGENCY DEPARTMENT  
EXHAUST ANALYSIS



Title: FIRST FLOOR PART PLAN -  
MECHANICAL

Date: NOVEMBER 08, 2016  
Project No: YAI5037ME  
Drawn By: CSR  
Approved By: WGF/WRG  
Revisions:

Confirm all existing  
conditions before  
proceeding OR before  
believing these conditions  
are true and up to date.  
Facility Plans are always  
a work in-progress!....

