

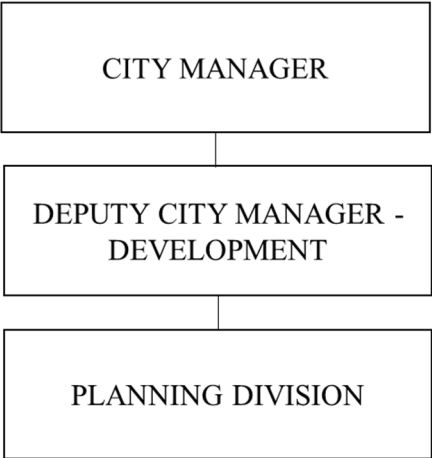
# Conservation Property Fund

---

Mission

To facilitate finances associated with the acquisition and management of conservation property.

CONSERVATION PROPERTY FUND  
ORGANIZATIONAL CHART



Core Responsibilities

1. The purpose of the Conservation Property fund is to dedicate revenue received from the Land Use Change Tax to preserve and protect open space and conservation land under the oversight of the Conservation Commission.
2. Money from the fund is utilized to purchase or acquire conservation easements on land that the Commission determines will meet the goals of the Open Space Plan.

## Conservation Property Fund

<u>Fund Summary</u>	2025 Revised	2025 Projected	2026 Budget
<b>Revenue</b>	<b>\$152,565</b>	<b>\$89,565</b>	<b>\$145,688</b>
<b>Expense</b>	<b>\$152,565</b>	<b>\$152,565</b>	<b>\$145,688</b>
<b>Net Income (Loss)</b>		<b>(\$63,000)</b>	<b>\$0</b>
<b>Beginning Working Capital</b>		<b>\$118,977</b>	<b>\$55,977</b>
<b>Ending Working Capital</b>		<b>\$55,977</b>	<b>\$55,977</b>

<u>Budget Detail</u>	2024 Actual	2025 Adopted	2025 Revised	2025 Projected	2026 Budget
<b>Revenue</b>					
Rental Income	\$92,878	\$89,565	\$89,565	\$89,565	\$89,748
Use of Fund Balance	\$0	\$63,000	\$63,000	\$0	\$55,940
<b>Total Revenue</b>	<b>\$92,878</b>	<b>\$152,565</b>	<b>\$152,565</b>	<b>\$89,565</b>	<b>\$145,688</b>
<b>Expense</b>					
Full Time	\$4,401	\$6,286	\$6,286	\$6,286	\$6,376
Retirement	\$595	\$850	\$850	\$850	\$813
FICA	\$338	\$466	\$466	\$466	\$466
Beneflex	\$1,097	\$1,722	\$1,722	\$1,722	\$2,539
Worker's Compensation	\$10	\$10	\$10	\$10	\$10
Unemployment Insurance	\$4	\$3	\$3	\$3	\$3
Business Expense	\$0	\$0	\$0	\$5	\$0
Professional Services	\$12,826	\$38,440	\$38,440	\$38,440	\$38,440
Grounds and Horticultural	\$948	\$20,300	\$20,300	\$20,300	\$20,300
Transfer Out - Trust	\$9,009	\$12,548	\$12,548	\$12,543	\$11,141
Transfer Out - General	\$63,650	\$71,940	\$71,940	\$71,940	\$65,600
<b>Total Expense</b>	<b>\$92,878</b>	<b>\$152,565</b>	<b>\$152,565</b>	<b>\$152,565</b>	<b>\$145,688</b>