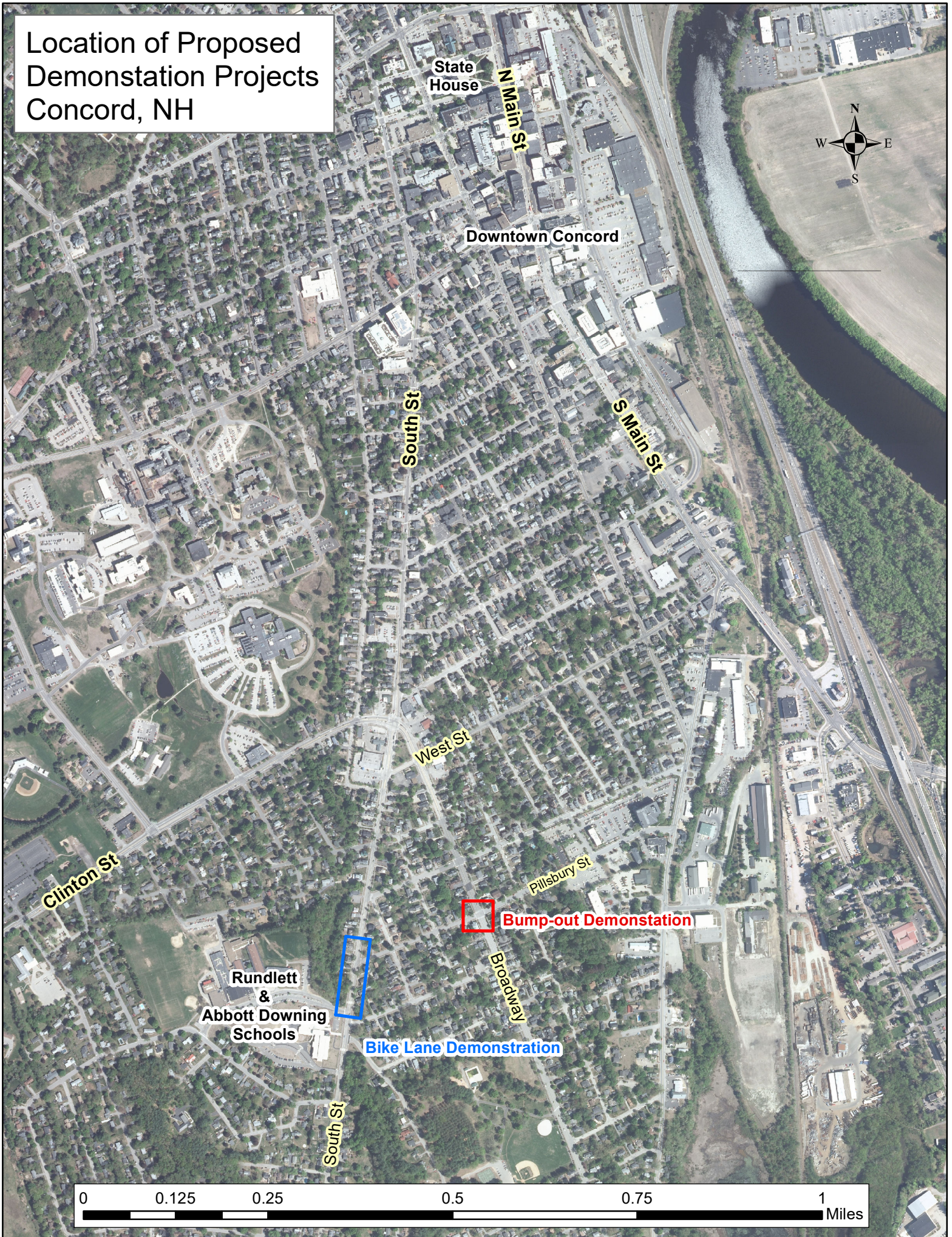


Location of Proposed Demonstration Projects Concord, NH



State House

Downtown Concord

N Main St

South St

S Main St

West St

Pillsbury St

Broadway

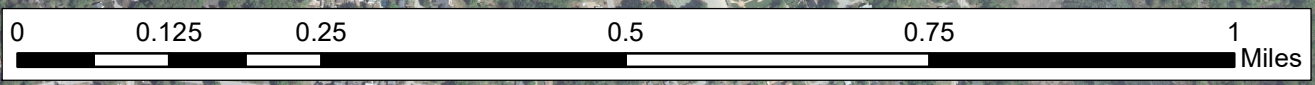
Clinton St

Rundlett & Abbott Downing Schools

Bike Lane Demonstration

Bump-out Demonstration

South St



South Street Bike Lane Demonstration Project

Pillsbury St. to School Driveway ~ 350'

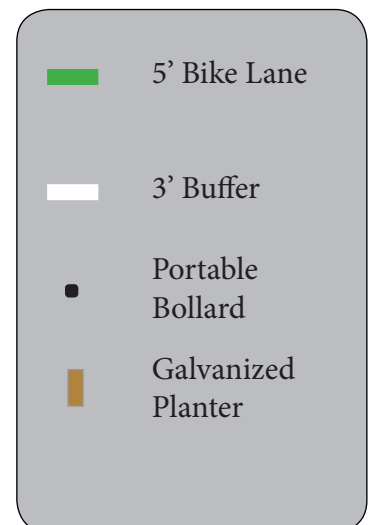
South Street maintains a width of 40' feet until a bump-out before the crosswalk. The 40' width supports the following layout:

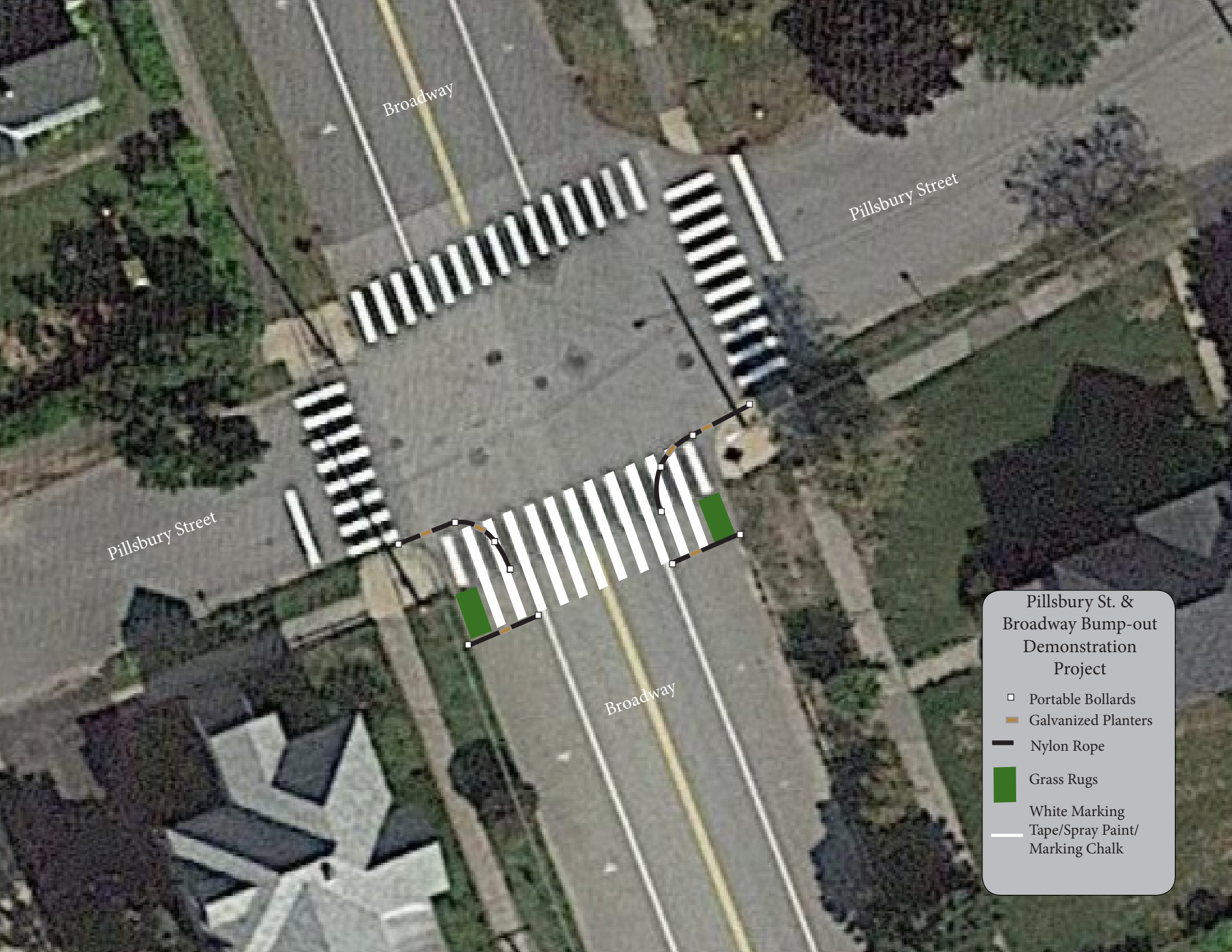
- 5' bike lane
- 3' buffer
- 12' travel lane
- Centerline
- 12' travel lane
- 3' buffer
- 5' bike lane

The bumpout reduces the roadway width to 37' and the 5' bike lane will continue to the driveway for approximately 180' without a buffer.

This layout utilizes existing striping, and will only require approximately 500' of white pavement marking tape. A mix of portable bollards and galvanized planters will be placed along the 3' buffers.

Signage: To be determined





Broadway

Pillsbury Street

Pillsbury Street

Broadway

Pillsbury St. & Broadway Bump-out Demonstration Project

- Portable Bollards
- Galvanized Planters
- Nylon Rope
- Grass Rugs
- White Marking
Tape/Spray Paint/
Marking Chalk