



Picture 1: Exterior of Hangar



Picture 2: Front View of Hangar Interior



Picture 3: Side View Hangar Interior

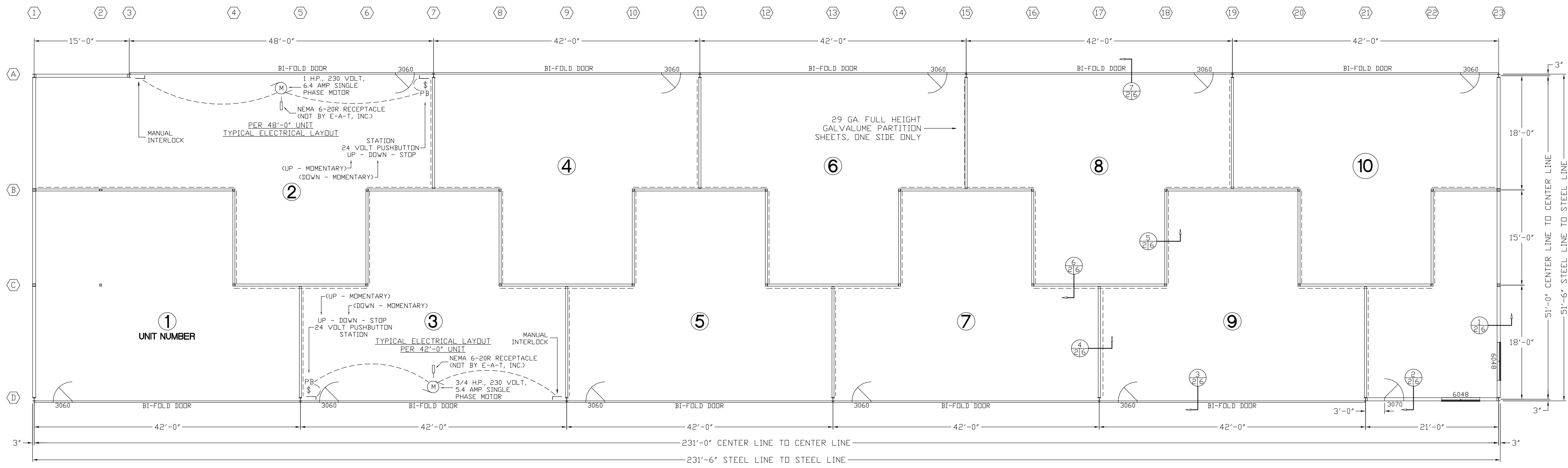


119 Storrs Street, Suite 201  
Concord, NH 03301  
Tel 603-226-1166  
Fax 603-226-1160  
[www.northpointeng.com](http://www.northpointeng.com)

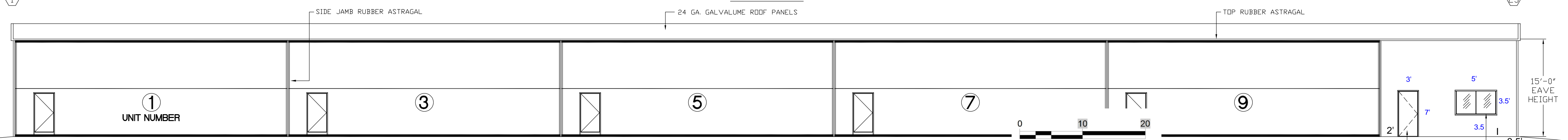
**PHOTOS OF SIMILAR HANGAR**

*PREPARED FOR:*

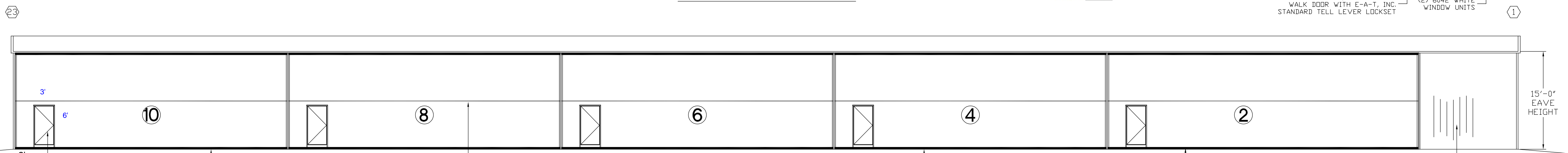
HAPSHIRE AVIATION – CONCORD HANGAR  
38 REGIONAL DRIVER  
CONCORD, NH



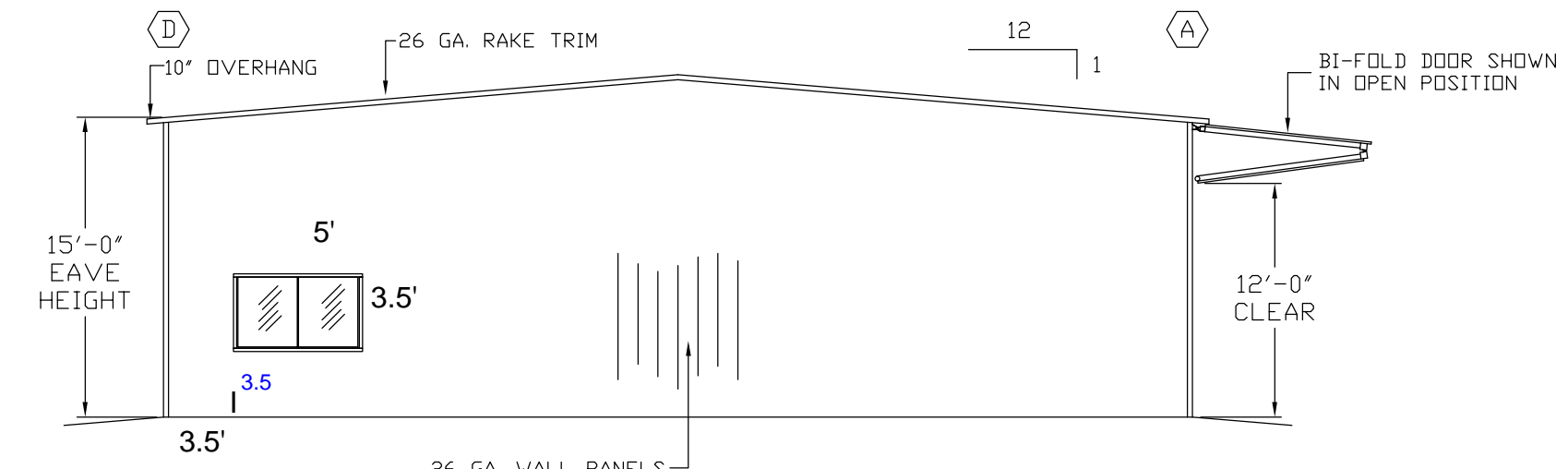
FLOOR PLAN



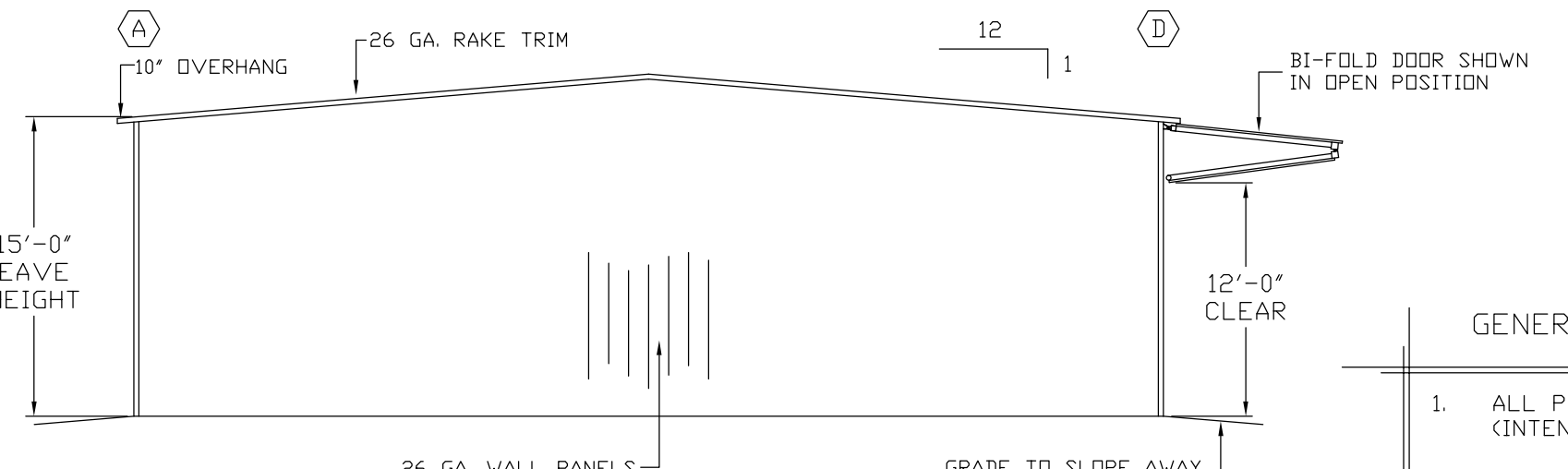
SIDEWALL ELEVATION AT "D"



SIDEWALL ELEVATION AT "A"



R.H. ENDWALL ELEVATION AT "23"

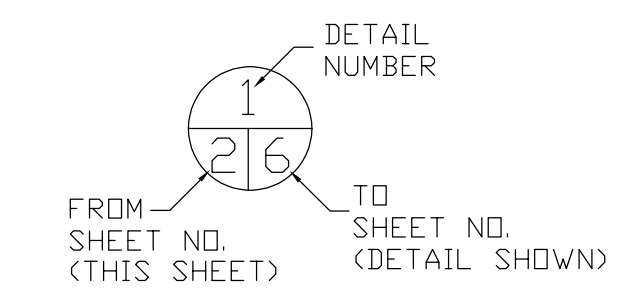


L.H. ENDWALL ELEVATION AT "1"

GENERAL NOTES

- ALL PRIMARY AND SECONDARY STEEL TO BE RED PRIMED. (INTENDED FOR SHORT TERM EXPOSURE ONLY)
- LOCKSETS TO BE "TELL" KEYED DIFFERENTLY AND MASTER KEYED. FIELD DRILL (2) 5/16" THRU HOLES FOR LOCKSET MOUNTING. DOOR LEAFS ARE SUPPLIED WITH A 2 1/8" BORE AND 1" THRU BOLT FOR CYLINDRICAL LOCKSET. BACKSET 2 3/4".
- ROOF OVERHANG TO BE 10" FROM STEEL LINE.
- EXTERIOR WALL PANELS AND TRIM COLORS TO BE DETERMINED BY OWNER.
- WALK DOOR IN BI-FOLD DOORS, SIDE AND END WALLS WHERE APPLICABLE, TO BE FLUSH AND WHITE IN COLOR. (PER MANUFACTURERS STANDARD)
- BI-FOLD DOOR PUSH BUTTON OPERATORS: MOMENTARY PRESSURE "DOOR DOWN" & "DOOR UP".
- BI-FOLD DOOR EQUIPPED WITH MANUAL INTERLOCKING CAMLOCKS.
- EACH BI-FOLD DOOR IS PROVIDED WITH A "COLD WEATHER" PACKAGE WHICH INCLUDES BOTTOM, CENTER, TOP RUBBER ASTRAGAL AND JAMB SEALS.

DETAIL DRAWING KEY



© Erect-A-Tube, Inc., 2025. All rights reserved. This work may not be reproduced, distributed, publicly performed or displayed, or used as the basis for derivative works without the express prior written consent of Erect-A-Tube, Inc.

SEAL EXP. DATE:	
1	ADD 6042 WINDOWS
No.	Revision/Issue
SUS	2-10-25
By	Date

**ERECT-A-TUBE**  
 701 WEST PARK STREET  
 HARVARD IL 60033-3000  
 OFFICE 815-943-4091  
 FAX 815-943-7756

Project Name and Address  
 CONCORD MUNICIPAL AIRPORT  
 25 REGIONAL DRIVE  
 CONCORD, NH 03301

Project Name and Address  
 CONCORD MUNICIPAL AIRPORT  
 25 REGIONAL DRIVE  
 CONCORD, NH 03301

10 UNIT N51-42/48

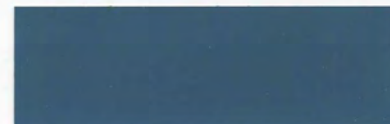
FLOOR PLAN & ELEVATIONS

EAF Project	E8219	Created By	
Date	01-03-25	Date	
Drawn By	DJS	Sheet	2 OF 10
Scale	NONE		

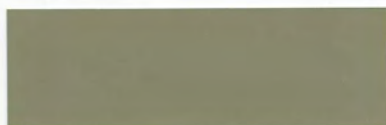
# Shades of Distinction



BRITE WHITE / REGAL WHITE\*



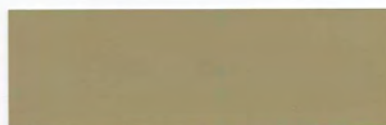
ROMAN BLUE



CLAY



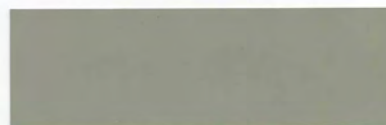
IVORY



SURREY BEIGE



PATRICIAN BRONZE



ASH GRAY



LIGHT STONE



AUTUMN RED



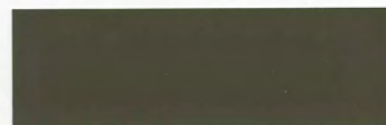
MATTE BLACK



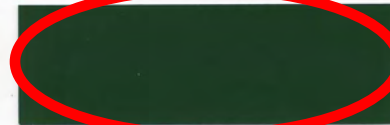
TUDOR BROWN



CHARCOAL



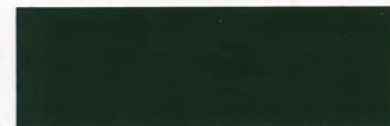
TERRATONE



EVERGREEN  
EXTERIOR PANELS  
AND TRIM COLOR



BRANDYWINE



HARTFORD GREEN

- ADDITIONAL COST WILL APPLY FOR DEEP TONE COLORS.
- AVAILABLE IN KYNAR 500® (PVDF) ONLY.



ALL COLORS ARE ENERGY STAR COMPLIANT.  
\*BRITE WHITE IS SILICONIZED POLYESTER. REGAL WHITE IS KYNAR 500® (PVDF).