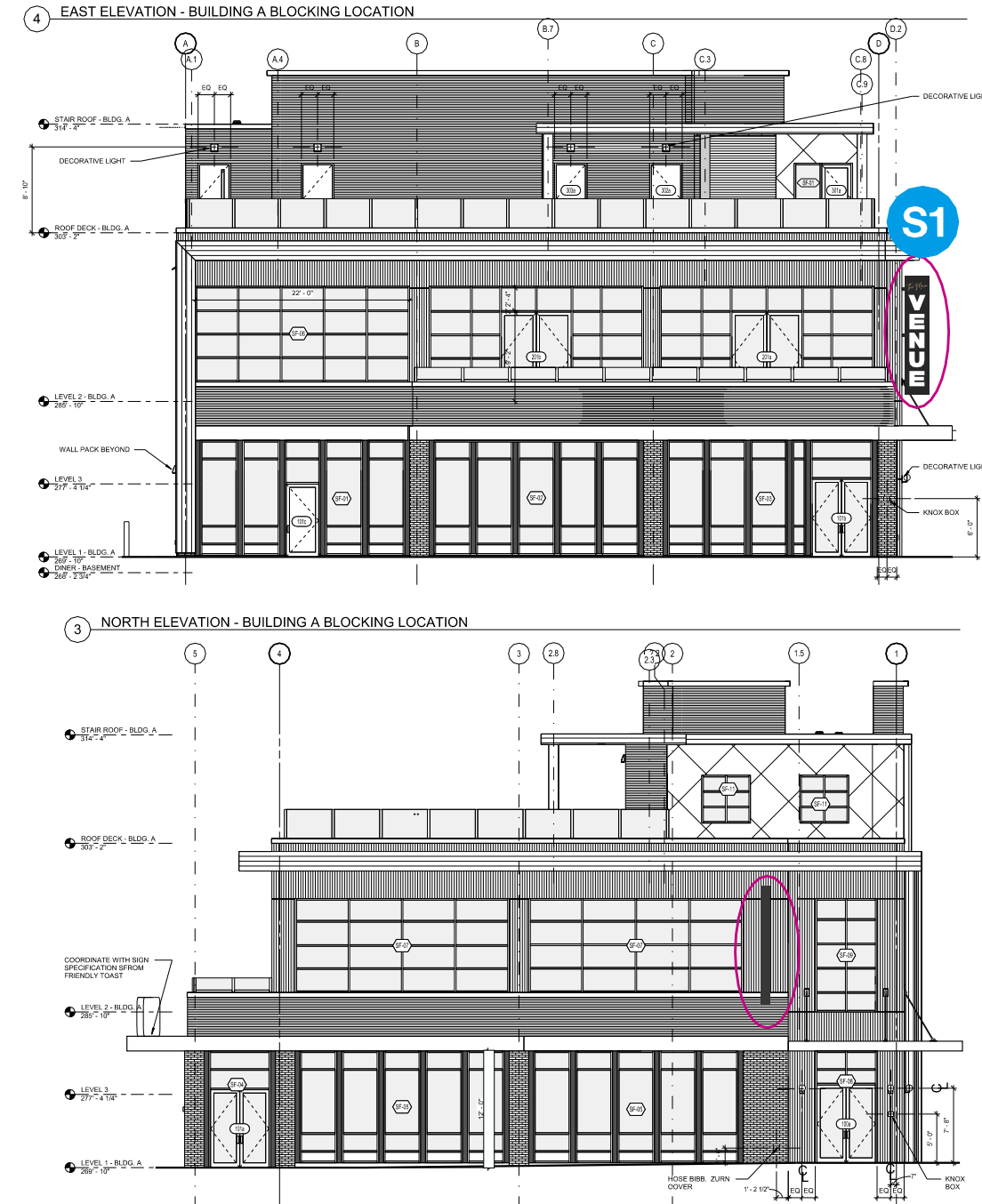


Night Rendering



Qty [1]

Design, furnish and install; (1) double sided, exterior projecting wall sign featuring:

- 1" thick, push thru acrylic letters
- custom cabinet, painted matte black
- internally illuminated led lighting system

\*Electrical Requirements: (1) 120v, 20 amp circuit, done by others.

Sign is 30 sq.ft

GENERAL SPECIFICATIONS	
■	FACES: 063 Aluminum, Painted
□	LETTERS: 1" Thick Acrylic, Push Thru
■	MOUNTING: Sleeve inserts, Welded to 4" Square Tubes
□	LIGHTING: 24v LED Lighting System
□	COLOR: Black, Matte Finish
■	VINYL: 3M Gold Metallic 3630-131 Translucent



225 East Industrial Park Dr. Manchester, NH 03109  
 603-622-5067 FAX 603-624-6188

DATE: 2-20-26	JOB NAME: Arts Alley - Concord - Sign Package
REP: JG	JOB LOCATION: 20-22 So. Main St., Concord NH
CONTACT: Pam Bissonnette - 603.715.8840	
AUTHORIZED SIGNATURE REQUIRED TO BEGIN PRODUCTION	

S2



Qty [1]

Design, furnish and install; (1) set of internally illuminated channel letters, wall mounted to wood paneling on roof deck of the third floor. Wall sign features:

- standard 3" led illuminated channel letters
- matte black returns
- internally illuminated led lighting system
- translucent teal vinyl graphics

\*Electrical Requirements: (1) 120v, 20 amp circuit, done by others.

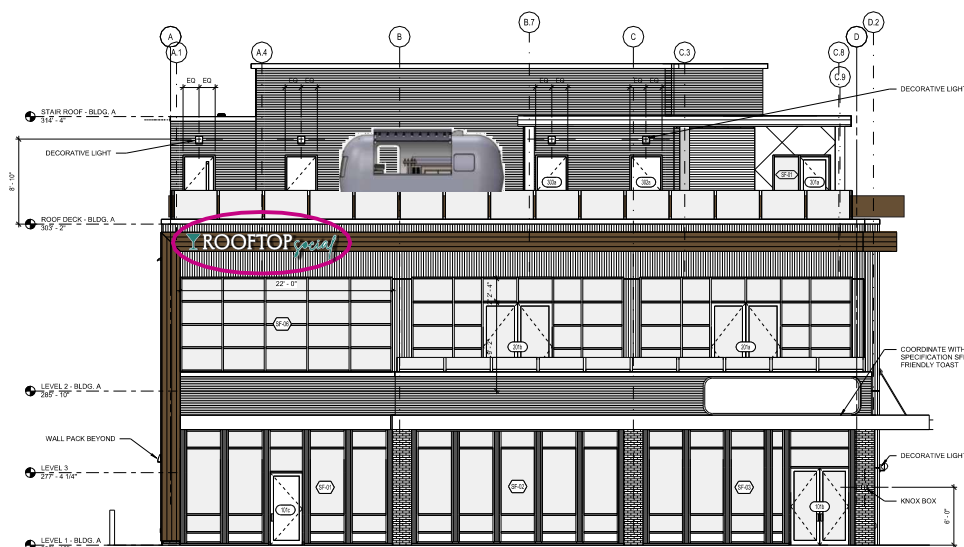
\*Wiring access into wood paneled section, access door, done by others.

Sign is 25.1 sq.ft

GENERAL SPECIFICATIONS	
■	FACES: 3/16" Acrylic, White
■	LETTERS: 3" Thick Standard Built Channel Letters
□	MOUNTING: Wood Fastening Hardware
□	LIGHTING: 24v LED Lighting System
■	COLOR: Black, Matte Finish
■	VINYL: Oracal Ocean Green 682 Translucent

Proposed Placement

Night Rendering



DATE: 2-20-26	JOB NAME: Arts Alley - Concord - Sign Package
REP: JG	JOB LOCATION: 20-22 So. Main St., Concord NH
CONTACT: Pam Bissonnette - 603.715.8840	
AUTHORIZED SIGNATURE REQUIRED TO BEGIN PRODUCTION	



225 East Industrial Park Dr. Manchester, NH 03109  
603-622-5067 FAX 603-624-6188