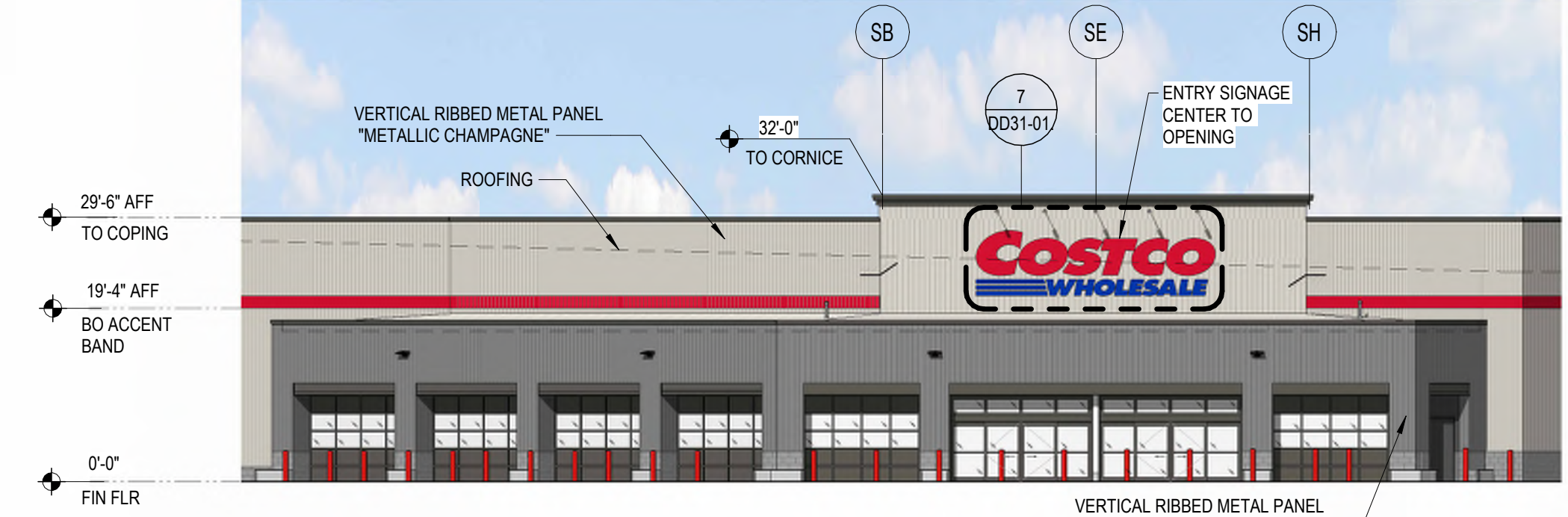




1 FRONT ELEVATION
SCALE: 1/16" = 1'-0"



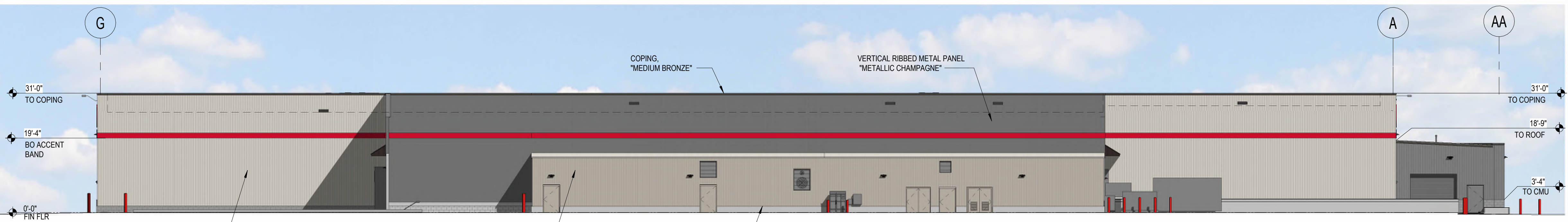
2 RIGHT ELEVATION
SCALE: 1/16" = 1'-0"



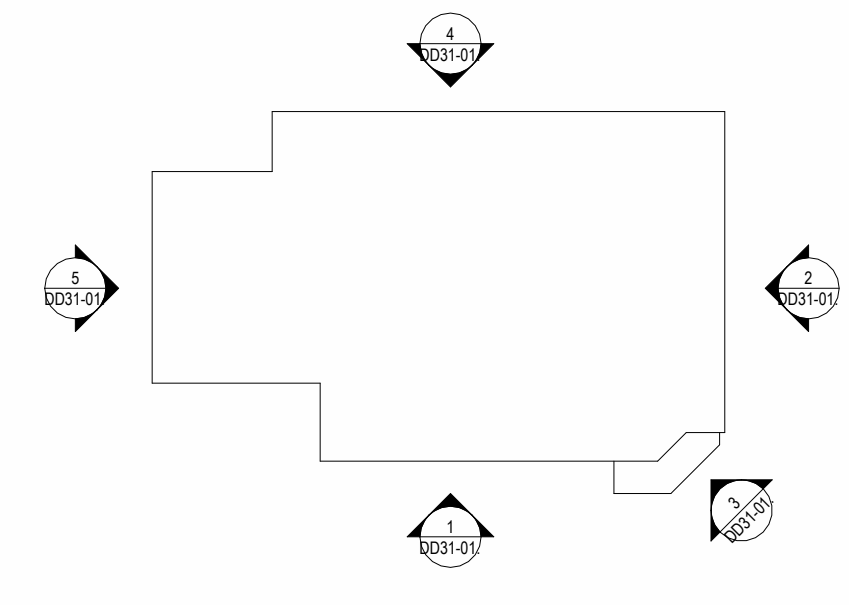
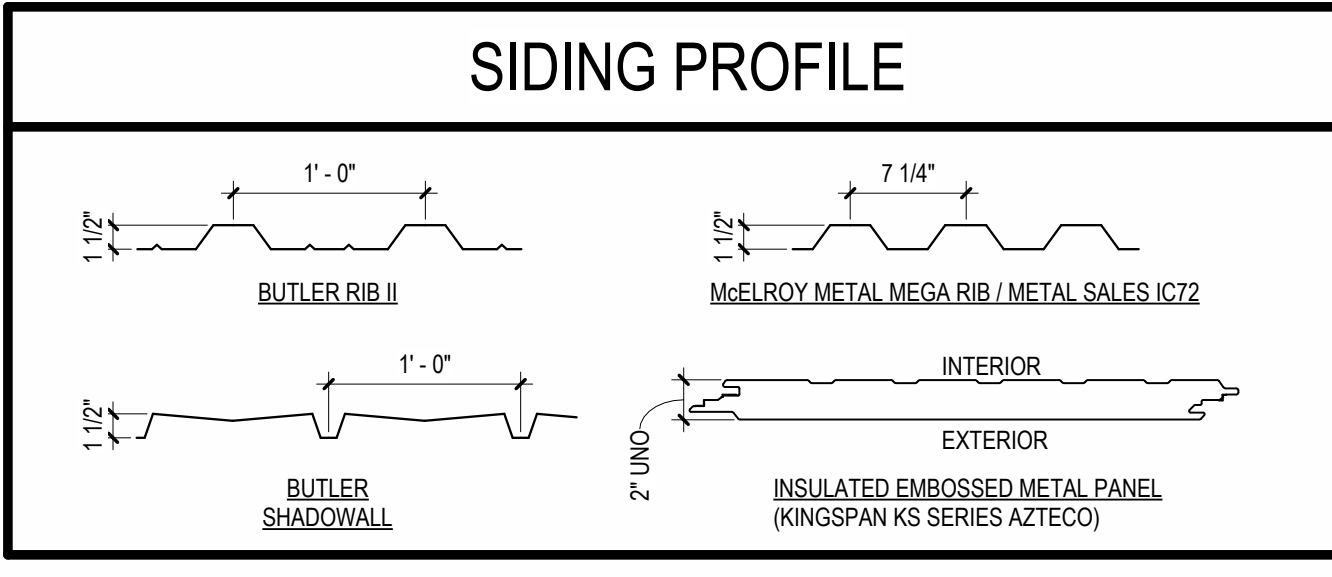
3 GRID-S.2 WALL ELEVATIONS
SCALE: 1/16" = 1'-0"



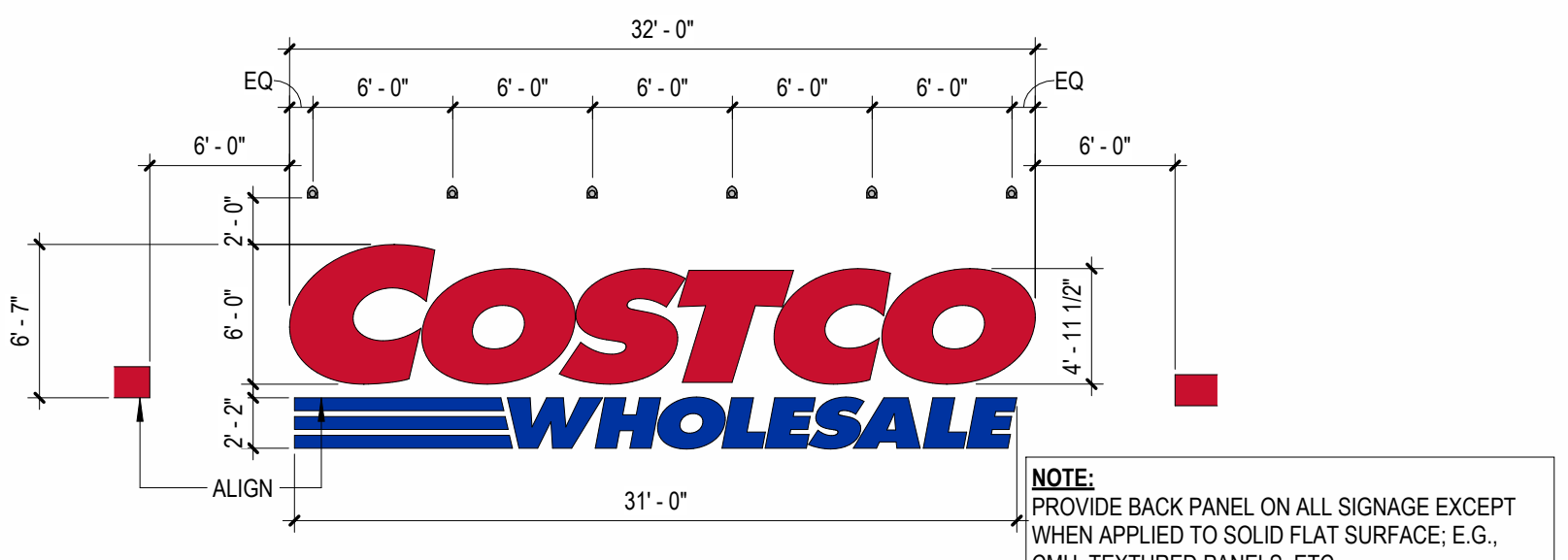
4 REAR ELEVATION
SCALE: 1/16" = 1'-0"



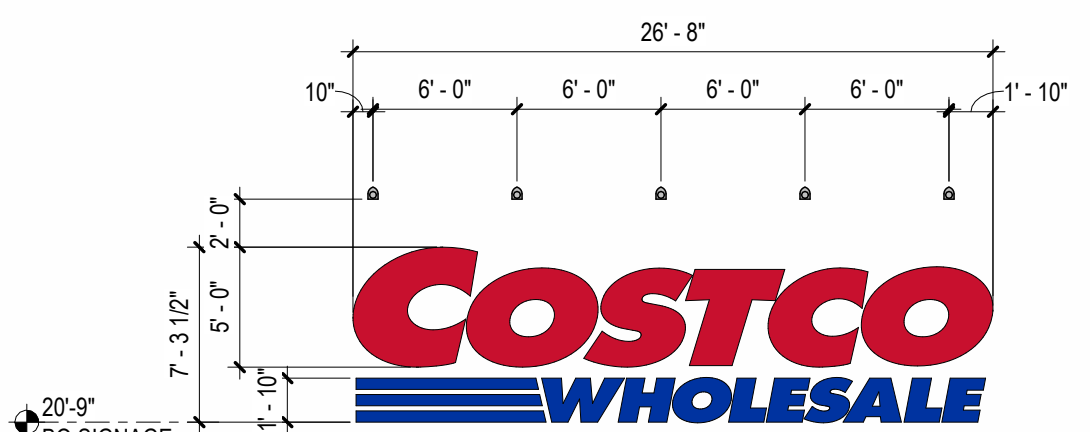
5 LEFT ELEVATION
SCALE: 1/16" = 1'-0"



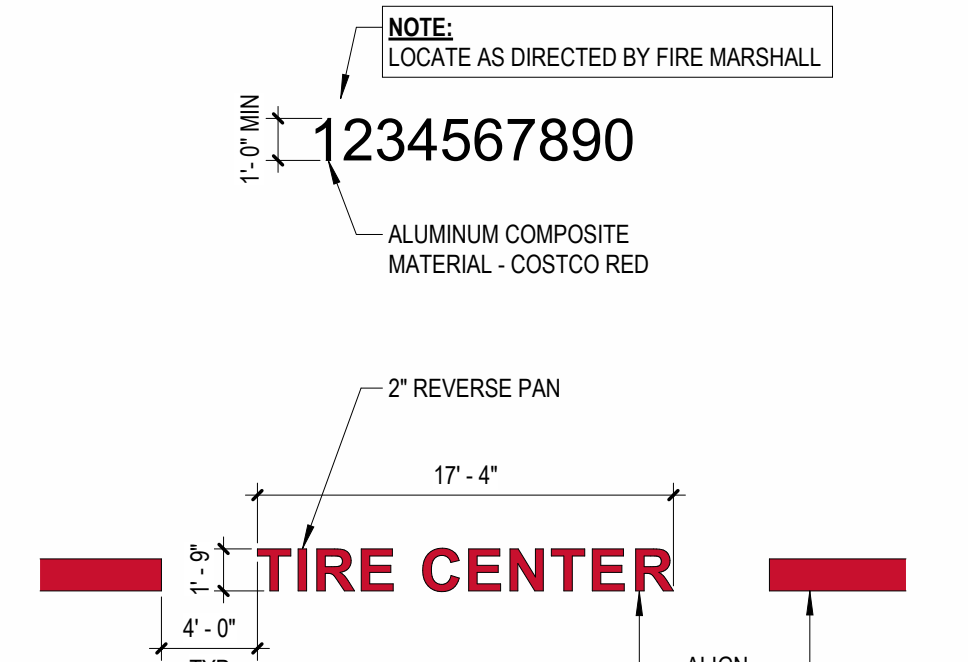
COSTCO WHOLESALE
CONCORD, NH



6 BUILDING SIGNAGE
SCALE: 1/8" = 1'-0" 0425 (SUPPLIED AND INSTALLED BY MBS)



7 ENTRY SIGNAGE
SCALE: 1/8" = 1'-0" 0425 (SUPPLIED AND INSTALLED BY MBS)



8 LOCATION SIGNAGE
SCALE: 1/8" = 1'-0" 0425 (SUPPLIED AND INSTALLED BY MBS)

SIGNAGE AREA TABULATION (WALL SIGNAGES)

QTY	SIGN	SIZE	AREA (SF) EA	TOTAL SF
3	COSTCO WHOLESALE	6'-0" X 10"	251 SF	753
1	COSTCO WHOLESALE	5'-0" X 10"	174 SF	174
1	TIRE CENTER	17'-4" X 1'-9"	31 SF	31
TOTAL SIGNAGE AREA				958

COSTCO WHOLESALE

CONCORD, NH

BUILDING ELEVATIONS

MARCH 2026

1101 Second Ave, Ste 100
Seattle, WA 98101
206 962 6500
MG2.com

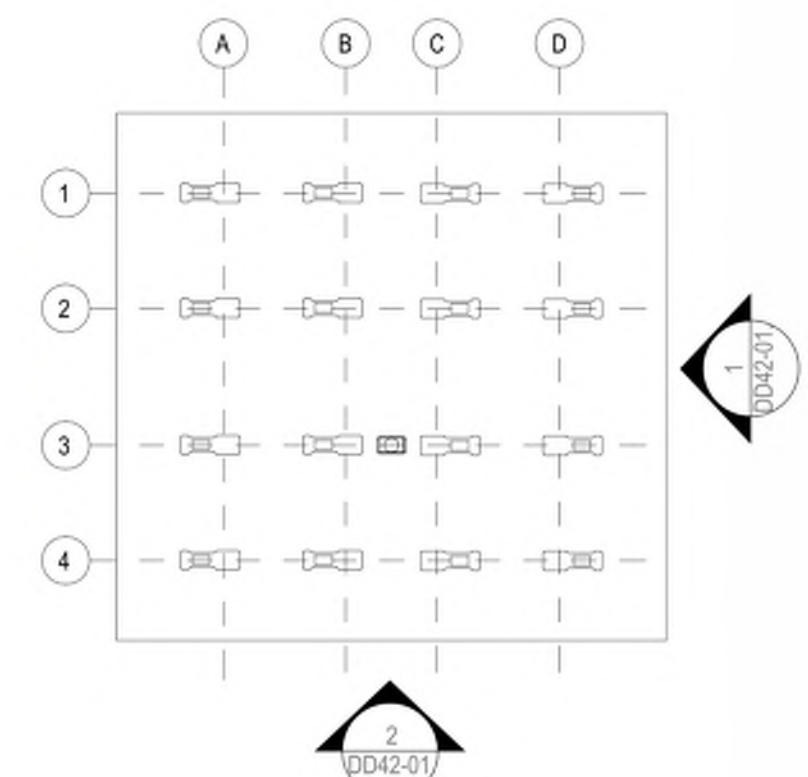
MG2

26-5565-01
MARCH 2026

BUILDING
ELEVATIONS

DD31-01.

© MG2, Inc. All rights reserved. No part of this document may be reproduced in any form or by any means without permission in writing from MG2.



1 CANOPY AND DISPENSER ISLAND
SCALE: 1/4" = 1'-0"

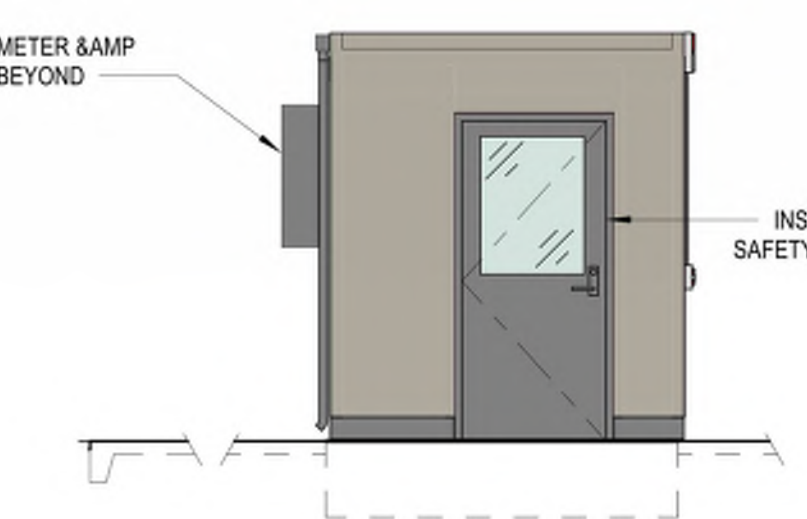
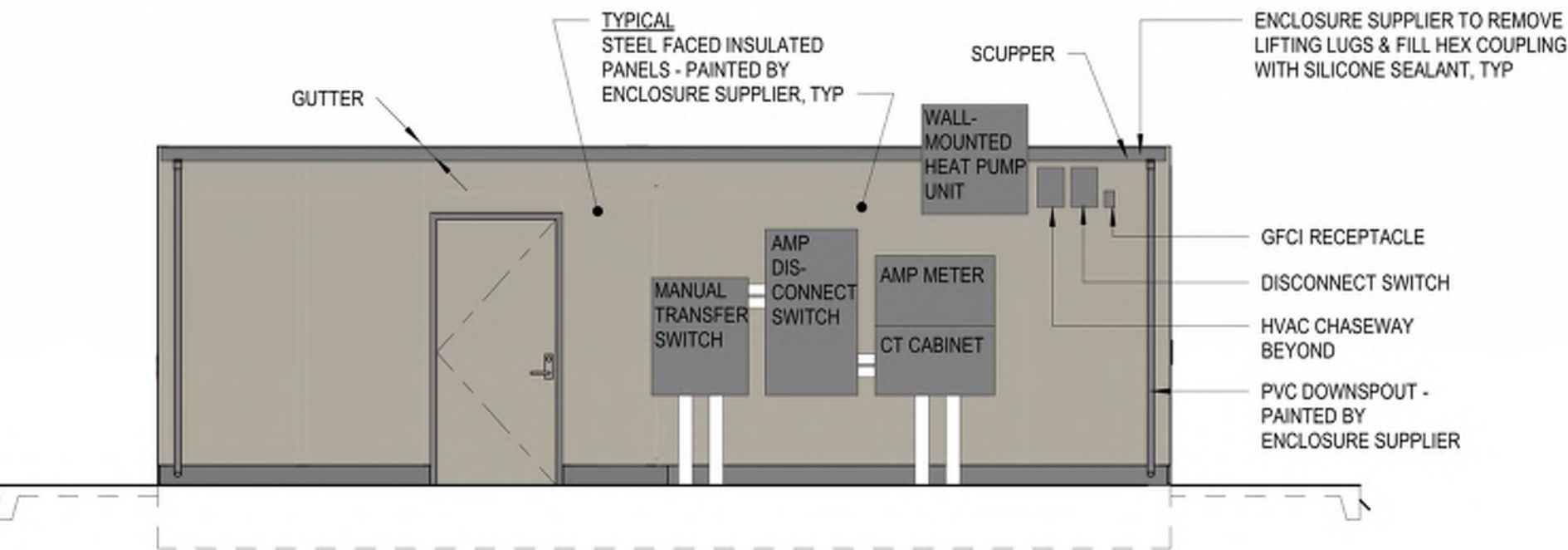
KEYPLAN
SCALE: 1" = 10'-0"



EXTERIOR FINISH SCHEDULE					
#	ITEM	MATERIAL	FINISH	COLOR	MANUFACTURER / NOTES
1	FASCIA	ENG. ARCH. PANEL	PRE-FINISHED	TALPE DARK	METAL SPAN - MEGA RIB
2	CONTROLLER ENCLOSURE	METAL	RYNAR 500	YOKO WHITE PCT180125	PPG
3	ROOF	METAL	POWDER COATED	YELLOW GREY RAL 7034	PPG
4	COLUMN	METAL	POWDER COATED	MS19 SILVER PCT173106	PPG

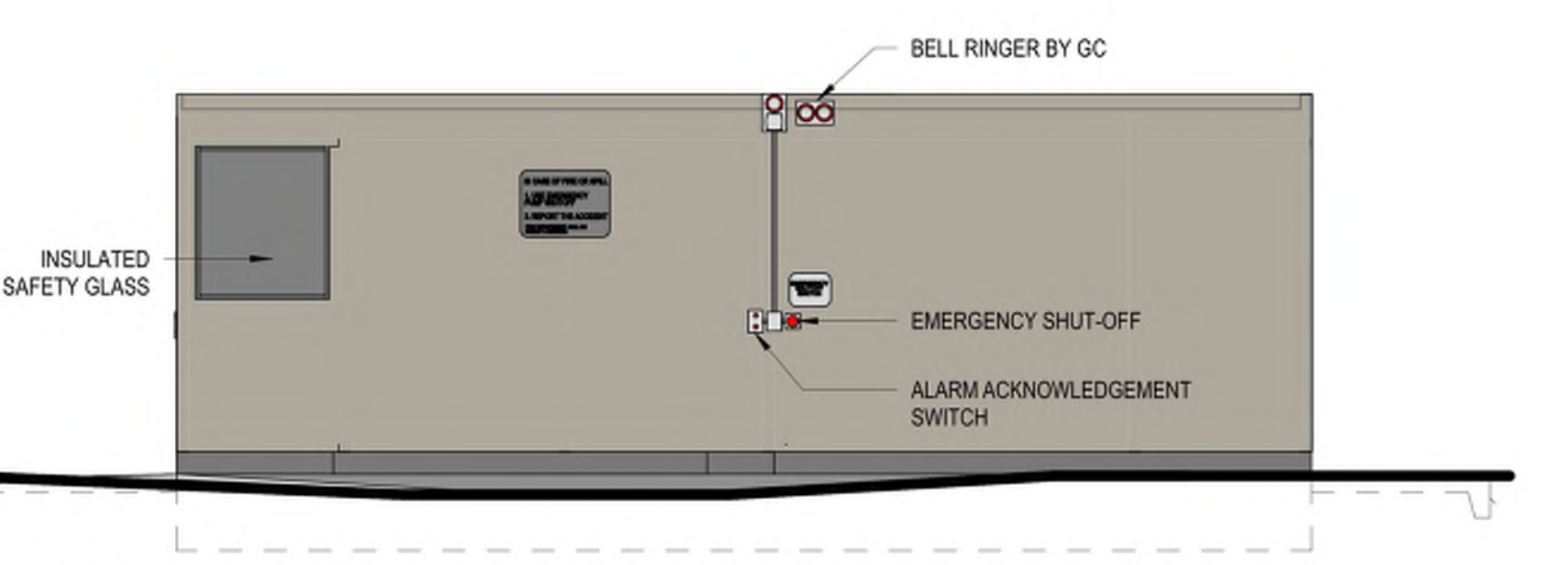
- KEYNOTES**
- PRE-FINISHED METAL FASCIA PANEL - SUPPLIED AND INSTALLED BY CANOPY SUPPLIER UNDER SEPARATE CONTRACT
 - COLUMN - SUPPLIED AND INSTALLED BY CANOPY SUPPLIER UNDER SEPARATE CONTRACT
 - ACCESSIBLE MULTIPRODUCT DISPENSER
 - CONCRETE-FILLED METAL FORMED GUARD AT ENDS OF ISLANDS - TOP OF GUARD AT 30" ABOVE TRAFFIC SURFACE - PAINT SIDES ONLY WITH GLOSS BLUE.
 - RAISED CONCRETE ISLAND WITH METAL EDGE FORM - PAINT SIDES ONLY WITH GLOSS BLACK.
 - WASTE RECEPTOR, BOLT DOWN, CENTER OF EACH ISLAND (SOIC)
 - CANOPY FASCIA SIGN LIGHT FIXTURE (SOIC)
 - FIRE EXTINGUISHER AND CABINETS MOUNTED ON ENTRANCE SIDE OF COLUMNS - FIRE EXTINGUISHER CABINET TO BE BROOKS MODEL # MARK II, RED CABINET WITH CLEAR COVER (OR EQUAL) - FIRE EXTINGUISHER AND CABINET, BY GC.
 - VIDEO CAMERA - VERIFY LOCATION WITH OWNER CONSTRUCTION PROJECT MANAGER. GC SHALL RUN CONDUIT AND INSTALL 3" ROUND OR OCTAGONAL J-BOX FOR MOUNTING CAMERAS.
 - CAULK PERIMETER OF DISPENSER BASE WITH PETROLEUM RESISTANT SEALANT, TYPICAL.
 - RAIN LEADERS
 - FUEL INDICATOR LIGHT SYSTEM
 - COPING BOTTOM AND TOP OF FASCIA PANEL - COLOR MEDIUM BRONZE
 - NO SMOKING / STOP ENGINE SIGNAGE (SOIC)

2 CANOPY AND DISPENSER ISLAND
SCALE: 1/4" = 1'-0"

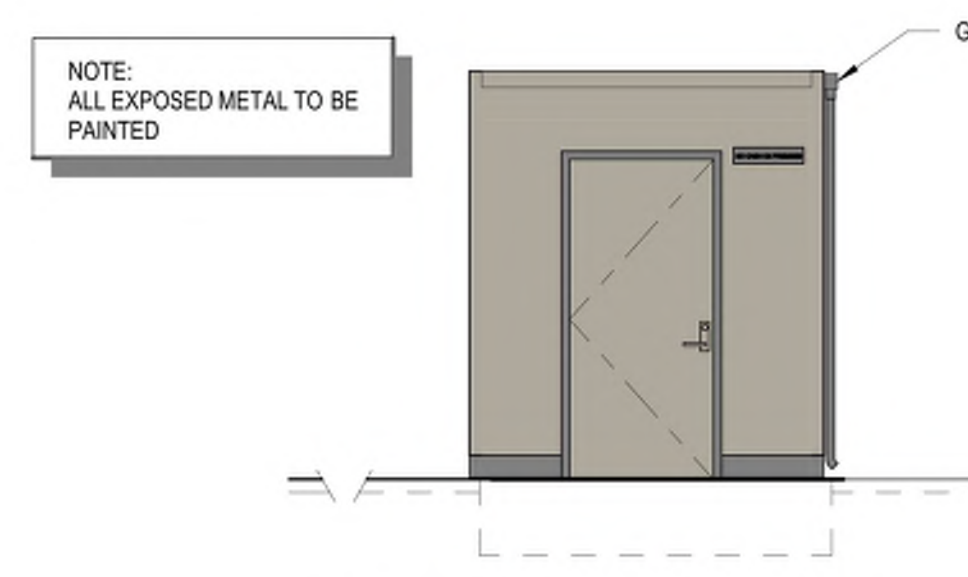


3 SIDE FACING AWAY FROM CANOPY
SCALE: 1/4" = 1'-0"

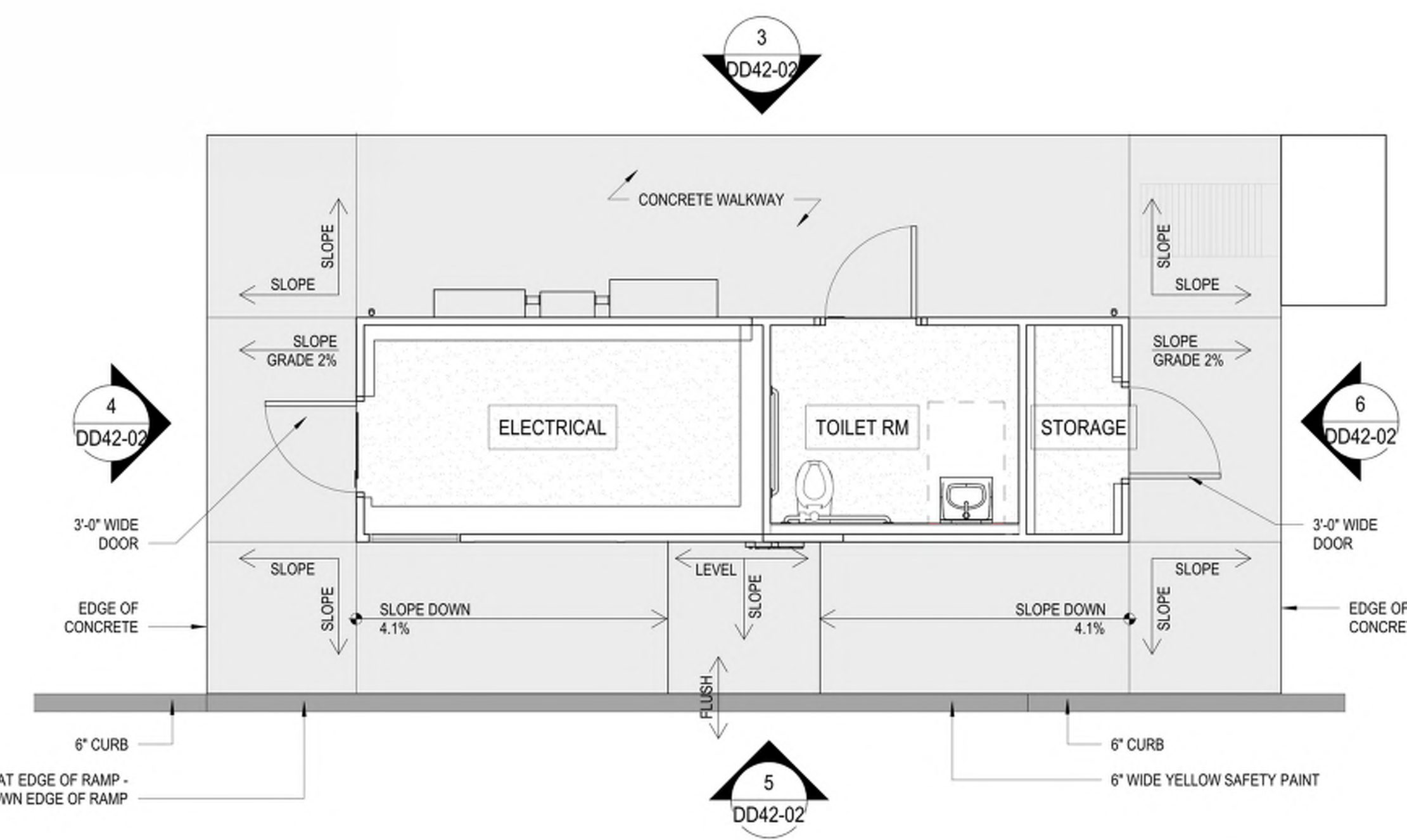
4 ELECTRICAL ENTRY
SCALE: 1/4" = 1'-0"



5 SIDE FACING CANOPY
SCALE: 1/4" = 1'-0"



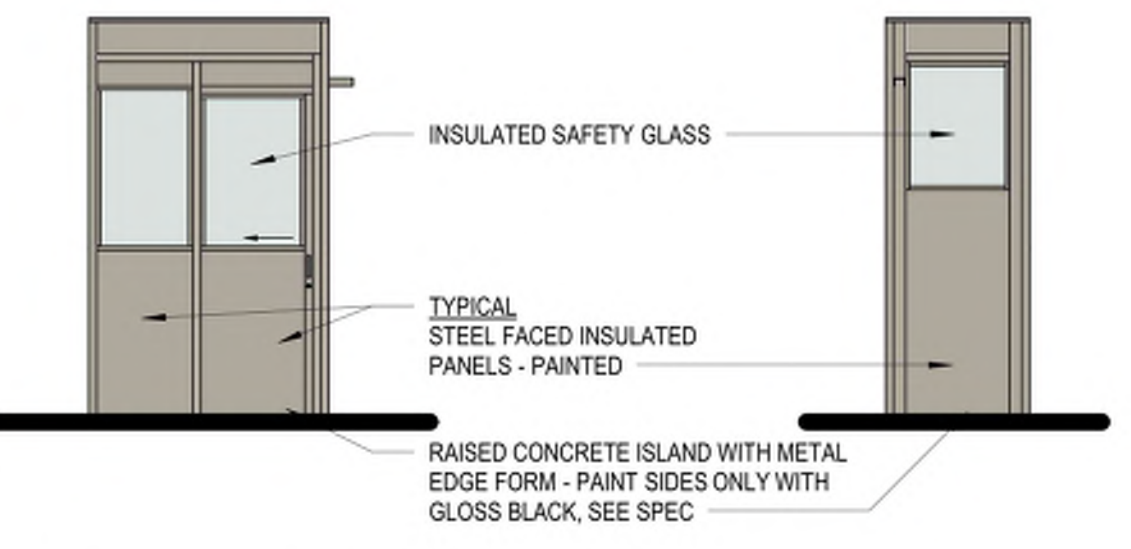
6 STORAGE ENTRY
SCALE: 1/4" = 1'-0"



7 CONTROLLER ENCLOSURE PLAN
SCALE: 1/4" = 1'-0"



8 CANOPY SIGNAGE
SCALE: 1/2" = 1'-0"



9 WARMING HUT
SCALE: 1/4" = 1'-0"



1101 Second Ave, Ste 100
Seattle, WA 98101
206 962 6500
MG2.com



26-5565-01
MARCH 2026

COLORED FUEL ELEVATIONS

DD42-02

COSTCO WHOLESALE

CONCORD, NH

COLORED FUEL ELEVATIONS

MARCH 2026

© MG2, Inc. All rights reserved. No part of this document may be reproduced in any form or by any means without permission in writing from MG2.