



City Council Meeting

DECEMBER 8, 2025

Introduction

- ▶ Brief overview of the planned transition to automated curbside trash and recycling collection
- ▶ Provide details on what residents can expect to see in the lead up to the beginning of the pilot phase
- ▶ Review cart placement instructions
- ▶ Review cart sizing options
 - ▶ Including how residents should communicate their needs with us
- ▶ Share resources that the community can use to find out more information

Automated Collection: Pilot

- ▶ On each collection day there are 3-4 residential curbside collection routes (truck/route)
- ▶ On each day during the pilot phase of the transition, 1 of these routes (trucks) will be designated for automated collection
- ▶ A 65-gallon cart for trash and a 95-gallon cart for recycling will be delivered to each home on these pilot routes in late spring 2026 (June)
- ▶ There will be no charge to residents for the carts
- ▶ Alternative cart sizes will be available for residents requiring accommodation

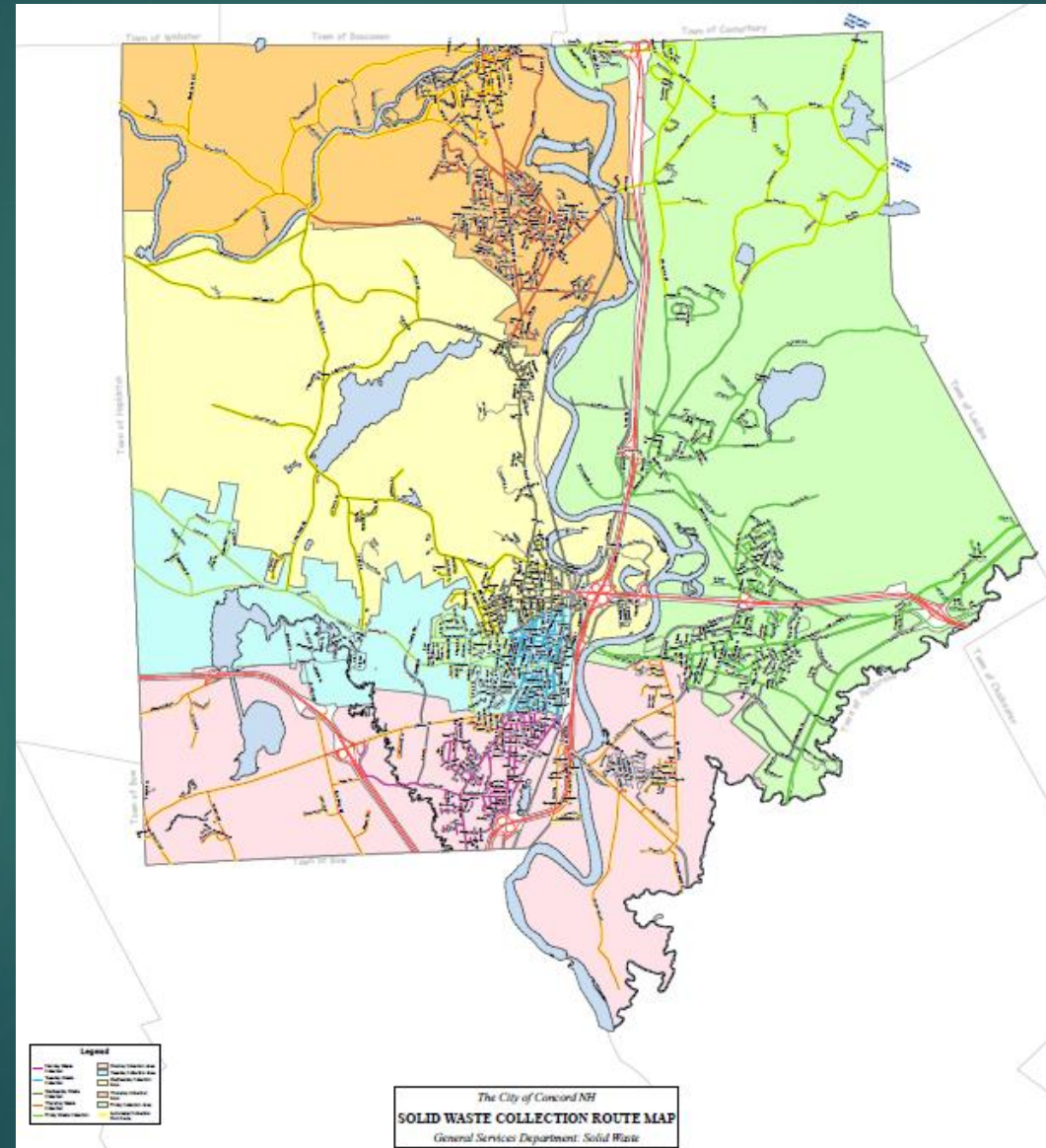
Automated Collection: Pilot

- ▶ All residents (pilot participants and those with manual collection) will still be required to use City-issued, purple, PAYT-bags
- ▶ Collection days will not change for any resident (at this point) but time of collection may vary
- ▶ Trash and recycling should be placed at the curb by 7am on your collection day
- ▶ Carts should be placed at the curb facing out with clearance on all sides. Instructions will be provided with the cart

Automated Collection: Why Carts?

- ▶ Industry shifts
- ▶ Increased efficiency
- ▶ Increased recovery/diversion
- ▶ Less windblown litter
- ▶ Safer

Automated Collection: Routes



Automated Collection: Notification

- ▶ In mid-December, all City residents receiving curbside collection will be mailed a postcard reviewing the transition plan including a note that those residences located on a pilot route will be receiving a subsequent mailing in early January.

Automated Collection: Notification

- ▶ In January 2026, residents that live along the pilot routes will receive a subsequent postcard notifying them that they will be a part of the pilot program. This postcard will include instructions on the means by which a resident can request alternate bin sizing.

Automated Collection: Carts

- ▶ Alternative (smaller) cart sizes will be available to senior citizens (65+) and residents requiring ADA or other accommodations
 - ▶ 95 gallon Recycling → 65 gallon Recycling
 - ▶ 65 gallon Trash → 35 gallon Trash
 - ▶ Residents may choose to “size down” both their trash and recycling bins but need not size down both
- ▶ Alternative (larger) trash cart size will be available to households with 5 or more members
 - ▶ 65 gallon Trash → 95 gallon Trash

Automated Collection: Carts

Default Cart Sizes

95-Gallon Recycling Cart

H: 43.5" W: 29.2" D: 33.3"



Holds over 5 times more recycling compared to the current City 18-gallon bins; a large size to contain cardboard. The lid contains materials and reduces wind-blown litter. Wheels and handle allow for easy moving - no more carrying!



65-Gallon Trash Cart

H: 41.2" W: 26" D: 27.8"



Holds approximately 4+ 15-gallon bags or 2+ 30-gallon bags. The lid contains materials and discourages critters. Wheels and handle allow for easy moving - no more carrying!



Automated Collection: Carts

Trash Cart Size Alternatives

Larger 95-Gallon Trash Cart

H: 43.5" W: 29.2" D: 33.3"



Households with 5 or more members may request a larger trash cart. Holds approximately 6+ 15-gallon bags or 3+ 30-gallon bags.



Smaller 35-Gallon Trash Cart

H: 37.5" W: 18.5" D: 24.5"



Senior citizens (ages 65+) and residents requiring ADA or other accommodations may request a smaller trash cart. Holds approximately 2+ 15-gallon bags and 1+ 30-gallon bag.



Automated Collection: Carts

Recycling Cart Size Alternatives

Smaller 65-Gallon Recycling Cart

H: 41.2" W: 26" D: 27.8



Senior citizens (ages 65+) and residents requiring ADA or other accommodations may request a smaller recycling cart. Holds over 3 times more recycling compared to the current City 18-gallon bins.



There is no option to size down to a 35-gallon recycling cart. 35-gallon carts may work for trash since items can more easily fit and weigh down the cart, but recycling items, such as cardboard, would be more difficult to fit, and the cart would be too light and top-heavy to stand upright for recyclables.

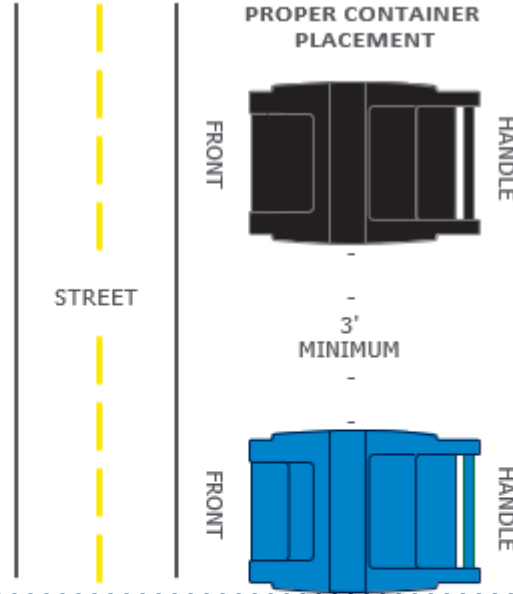
Automated Collection: Requests

- ▶ Cart Order Due in April 2026
- ▶ Requests for alternative sizes or opting out (before delivery) will be accepted through March 31st 2026
- ▶ Requests can be made online or by calling the General Services at 603-228-2737
- ▶ Requests received after March 31st 2026 will be placed on a waitlist (through SeeClickFix) and satisfied based on availability and funding

Automated Collection: Placement

CONTAINER DO'S

- Keep containers on a hard, level surface clear of snow and other landscaping debris and no more than 6' from edge of curb.
- Please allow containers a 3' perimeter of clearance from obstructions such as parked cars, trees, mailboxes and utility poles. There must also be a 15' over head clearance from any low hanging tree branches or power lines, etc.
- If you have more than one cart placed at the curb, please set them side by side as indicated in the illustration with at least 3' of clearance between the containers. Do not block sidewalk.
- All items to be collected must fit inside your curbside containers.



CONTAINER DON'TS



Containers must remain upright for pickup



Keep all materials inside the container



Do not place containers back to back



Keep container clear of all obstructions

Automated Collection: Rollout

- ▶ Pilot Route Cart Delivery: Date TBD (June 2026, ~2 weeks)
- ▶ Pilot Route Program Commencement: Week of June 29, 2026
- ▶ Carts will be delivered curbside and placed in the relative location of service
- ▶ Old Bin Disposal: Information Forthcoming
- ▶ City and Casella Staff will be reaching out to locations which may require additional guidance on placement in late winter/spring 2026
 - ▶ One Way Streets
 - ▶ Back Downs
 - ▶ Private Roads
 - ▶ Bulk Stops
 - ▶ Multi-families

Automated Collection: Rollout

- ▶ Concord's curbside collection program is a residential program; commercial entities that may have been using purple bags will not receive a cart.
- ▶ Carts MUST be official Casella/Concord bins, using one's own bin is not allowed
- ▶ Carts are provided by Casella/Concord and should stay with the property to which they are issued to
- ▶ Carts are emblazoned with a serial number as each cart is assigned to a particular address
- ▶ Carts should not be permanently marked, stickers are ok
- ▶ Parcels with more than 1 dwelling unit, will receive one set of toters for each unit up to a maximum of 4 sets of toters

Automated Collection: Outreach

- ▶ GSD Website:
<https://www.concordnh.gov/Automated-Collection>
- ▶ Casella Website:
<https://www.casella.com/services/collection/>
- ▶ General Services Department: 603-228-2737

Automated Collection: Resource Guide



AUTOMATED CURBSIDE COLLECTION FOR TRASH & RECYCLING



COMING TO CONCORD

LET'S GET ROLLING!

The transition to automated curbside collection will begin the week of June 29, 2026, with a 2-year pilot program for trial routes. The City-wide implementation will occur in July 2028.

New trash and recycling carts will be provided:

- 1 95-Gallon Recycling Cart
- 1 65-Gallon Trash Cart



Resource Guide:

The City's Pay-As-You-Throw Program will continue and PAYT trash bags will be required with automated trash collection. Learn more at www.concordnh.gov/automatedcollection.





Thank you!