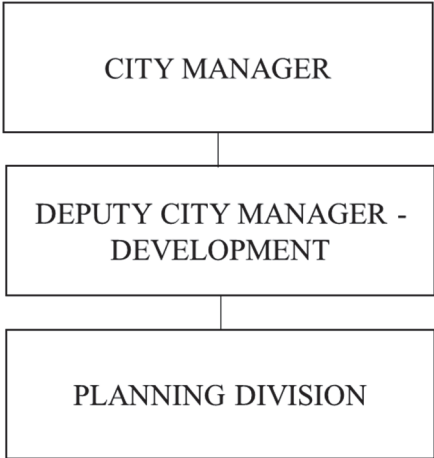


Conservation Property Fund

Mission

To facilitate finances associated with the acquisition and management of conservation property.

CONSERVATION PROPERTY FUND
ORGANIZATIONAL CHART



Core Responsibilities

1. The purpose of the Conservation Property fund is to dedicate revenue received from the Land Use Change Tax to preserve and protect open space and conservation land under the oversight of the Conservation Commission.
2. Money from the fund is utilized to purchase or acquire conservation easements on land that the Commission determines will meet the goals of the Open Space Plan.

Conservation Property Fund

<u>Fund Summary</u>	2026 Revised	2026 Projected	2027 Budget
Revenue	\$145,688	\$145,688	\$145,505
Expense	\$145,688	\$93,144	\$145,505
Net Income (Loss)		\$52,544	\$0
Beginning Working Capital		\$118,977	\$171,521
Ending Working Capital		\$171,521	\$171,521

<u>Budget Detail</u>	2025 Actual	2026 Adopted	2026 Revised	2026 Projected	2027 Budget
Revenue					
Rental Income	\$100,265	\$89,748	\$89,748	\$89,748	\$89,565
Use of Fund Balance	\$0	\$55,940	\$55,940	\$55,940	\$55,940
Other Revenue	\$7	\$0	\$0	\$0	\$0
Total Revenue	\$100,272	\$145,688	\$145,688	\$145,688	\$145,505
Expense					
Full Time	\$5,922	\$6,376	\$6,376	\$6,520	\$6,798
Retirement	\$800	\$813	\$813	\$830	\$867
FICA	\$433	\$466	\$466	\$490	\$521
Beneflex	\$2,214	\$2,539	\$2,539	\$2,530	\$2,761
Worker's Compensation	\$10	\$10	\$10	\$10	\$10
Unemployment Insurance	\$2	\$3	\$3	\$3	\$3
Business Expense	\$10	\$0	\$0	\$20	\$0
Professional Services	\$3,730	\$38,440	\$38,440	\$5,000	\$38,440
Grounds and Horticultural	\$325	\$20,300	\$20,300	\$1,000	\$20,300
Transfer Out - Trust	\$14,886	\$11,141	\$11,141	\$11,141	\$9,865
Transfer Out - General	\$71,940	\$65,600	\$65,600	\$65,600	\$65,940
Total Expense	\$100,272	\$145,688	\$145,688	\$93,144	\$145,505