

**2024-2033
CAPITAL IMPROVEMENT
PROJECT DETAIL**

PROJECT: GS-HIGHWAY / UTILITIES #78-Annual Highway Improvement Program

I. PROJECT TYPE: Street Rehabilitation

II. LOCATION: City Wide

III. PROJECT OBJECTIVES AND BACKGROUND

NEED	<input type="checkbox"/> New	<input type="text" value="M"/>	Safety	<input type="text" value="M"/>	Facility Cond.	<input type="text" value="L"/>	Productivity	
SERVED:	<input type="checkbox"/> Replace	<input type="text" value="N/A"/>	Mandates	<input type="text" value="H"/>	Service Def.	<input type="text" value="L"/>	Tax Base Exp.	<input type="text" value="H"/> City Master Pl.
	<input checked="" type="checkbox"/> Rebuild	<input type="text" value="N/A"/>	O + M Costs	<input type="text" value="M"/>	Council Goals	<input type="text" value="M"/>	Timeliness	Road Resurfacing
	<input type="checkbox"/> Total-Cost-of-Ownership (TCO) or Life-cycle Cost (LCC) analysis							

DESCRIPTION: The purpose of this project is to fund routine repair and reconstruction of City streets, including minor alterations to improve safety and flow of traffic.

There are generally two techniques used to improve streets; cold planing and reclaiming. Cold planing and overlaying involves removal of the top 1-2" of existing pavement with a milling machine, followed by the installation of new pavement. Reclaiming involves in-place crushing and recycling of all underlying asphalt and gravel road base, which is then graded and compacted to form the foundation for new pavement.

All streets scheduled for cold plane / overlay or reclamation receive drainage improvements, as might be required to correct existing deficiencies in order to prolong longevity of the roadway.

Crack sealing is also included within this project in order to prolong the longevity of past paving projects.

SERVICE IMPACT: Improved roadway surfaces and drainage infrastructure. Reduced maintenance. Improved drivability / rideability for motorists.

IMPACT IF NOT FUNDED: Deferred maintenance results in increased deterioration of roadway infrastructure, thus necessitating more involved and expensive repairs in the future.

IV PREVIOUS FISCAL YEAR AUTHORIZED:

PREVIOUS AMOUNT:

V. PROJECT USEFUL LIFE (In Years): 25

Expected Bond Term (in Years) 20

CITY OF CONCORD, NEW HAMPSHIRE

**2024-2033
CAPITAL IMPROVEMENT
PROJECT DETAIL**

PROJECT: GS-HIGHWAY / UTILITIES #78-Annual Highway Improvement Program

VI. PROJECT FUND SUMMARY

Fund	Type	2024	2025	2026	2027	2028	2029	2030	2031	2032	2033	Ten Years
General	Highway Reserve	3,122,000	2,748,000	2,600,000	2,600,000	3,250,000	3,250,000	3,400,000	3,400,000	3,550,000	3,550,000	31,470,000
	Total	3,122,000	2,748,000	2,600,000	2,600,000	3,250,000	3,250,000	3,400,000	3,400,000	3,550,000	3,550,000	31,470,000

VII. PROJECT FUND DETAIL

Fiscal Year	Fund Type	Amount	Action
2024	General Highway Reserve	2,825,000	MAINTENANCE OVERLAY: Abbott Rd; Manor Rd to Sewalls Falls Rd River Rd; Full Length RECLAIM: Airport Rd; Loudon Rd to #184 Airport Rd Chenell Dr; Pembroke Rd to Regional Dr Lawrence St; Full Length Pembroke Rd; Full Length Stickney Hill Rd; Full Length Millstone Dr; Full Length Spillway Ln; Full Length
	General Highway Reserve	110,000	Pavement preservation.
	General Highway Reserve	100,000	Drainage repairs.
	General Highway Reserve	62,000	Merrimack St (P) Drainage
	General Highway Reserve	25,000	Emergency overlays.
		<u>\$3,122,000</u>	2024 Subtotal

**2024-2033
CAPITAL IMPROVEMENT
PROJECT DETAIL**

PROJECT:		GS-HIGHWAY / UTILITIES		#78-Annual Highway Improvement Program
2025	General	Highway Reserve	2,523,000	Reclaim, cold plane/overlay, & maintenance overlay selected streets. RECLAIM: Brookwood Dr; Full Length Clarke St; Full Length Edgemont Ave; Full Length Engel St; Full Length Farmwood; Full Length Fernald St; Full Length Fisher St; Full Length Fox Run; Full Length Freedom Acres; Full Length Hannah Dustin Dr; Hoit Corner to Paved section in 2021 Horseshoe Pond Ln; full Length Kearsarge St; Full Length Mill St; Full Length Old North Main St; Full Length Pinecrest Circle; Full Length Shoestring Rd; Full Length Tallent Rd; Hoit Rd to 130' Northerly Winthrop St; Full Length
	General	Highway Reserve	100,000	Pavement preservation.
	General	Highway Reserve	100,000	Drainage repairs.
	General	Highway Reserve	25,000	Emergency overlays.
			<u>\$2,748,000</u>	2025 Subtotal
2026	General	Highway Reserve	2,275,000	Reclaim, cold plane/overlay, & maintenance overlay selected streets.
	General	Highway Reserve	200,000	Pavement preservation.
	General	Highway Reserve	100,000	Drainage repairs.
	General	Highway Reserve	25,000	Emergency overlays.
			<u>\$2,600,000</u>	2026 Subtotal
2027	General	Highway Reserve	2,275,000	Reclaim, cold plane/overlay, & maintenance overlay selected streets.

CITY OF CONCORD, NEW HAMPSHIRE

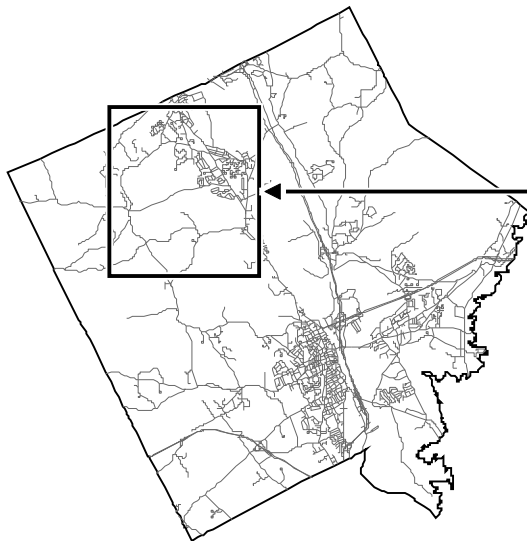
**2024-2033
CAPITAL IMPROVEMENT
PROJECT DETAIL**

PROJECT:	GS-HIGHWAY / UTILITIES	#78-Annual Highway Improvement Program	
	General Highway Reserve	200,000	Pavement preservation.
	General Highway Reserve	100,000	Drainage repairs.
	General Highway Reserve	25,000	Emergency overlays.
		<u>\$2,600,000</u>	2027 Subtotal
2028	General Highway Reserve	2,925,000	Reclaim, cold plane/overlay, & maintenance overlay selected streets.
	General Highway Reserve	200,000	Pavement preservation.
	General Highway Reserve	100,000	Drainage repairs.
	General Highway Reserve	25,000	Emergency overlays.
		<u>\$3,250,000</u>	2028 Subtotal
2029	General Highway Reserve	2,925,000	Reclaim, cold plane/overlay, & maintenance overlay selected streets.
	General Highway Reserve	200,000	Pavement preservation.
	General Highway Reserve	100,000	Drainage repairs.
	General Highway Reserve	25,000	Emergency overlays.
		<u>\$3,250,000</u>	2029 Subtotal
2030	General Highway Reserve	3,075,000	Reclaim, cold plane/overlay, & maintenance overlay selected streets.
	General Highway Reserve	200,000	Pavement preservation.
	General Highway Reserve	100,000	Drainage repairs.
	General Highway Reserve	25,000	Emergency overlays.
		<u>\$3,400,000</u>	2030 Subtotal
2031	General Highway Reserve	3,075,000	Reclaim, cold plane/overlay, & maintenance overlay selected streets.
	General Highway Reserve	200,000	Pavement preservation.
	General Highway Reserve	100,000	Drainage repairs.
	General Highway Reserve	25,000	Emergency overlays.
		<u>\$3,400,000</u>	2031 Subtotal

CITY OF CONCORD, NEW HAMPSHIRE

**2024-2033
CAPITAL IMPROVEMENT
PROJECT DETAIL**

PROJECT:	GS-HIGHWAY / UTILITIES	#78-Annual Highway Improvement Program	
2032	General Highway Reserve	3,225,000	Reclaim, cold plane/overlay, & maintenance overlay selected streets.
	General Highway Reserve	200,000	Pavement Preservation.
	General Highway Reserve	100,000	Drainage repairs.
	General Highway Reserve	25,000	Emergency overlays.
		<hr/>	
		\$3,550,000	2032 Subtotal
2033	General Highway Reserve	3,225,000	Reclaim, cold plane/overlay, & maintenance overlay selected streets.
	General Highway Reserve	200,000	Pavement Preservation.
	General Highway Reserve	100,000	Drainage repairs.
	General Highway Reserve	25,000	Emergency overlays
		<hr/>	
		\$3,550,000	2033 Subtotal
		<hr/>	
	TOTAL	\$31,470,000	



Disclaimer of Mapping Accuracy
Engineering Services Division
City of Concord, New Hampshire

GEOGRAPHIC INFORMATION SYSTEM

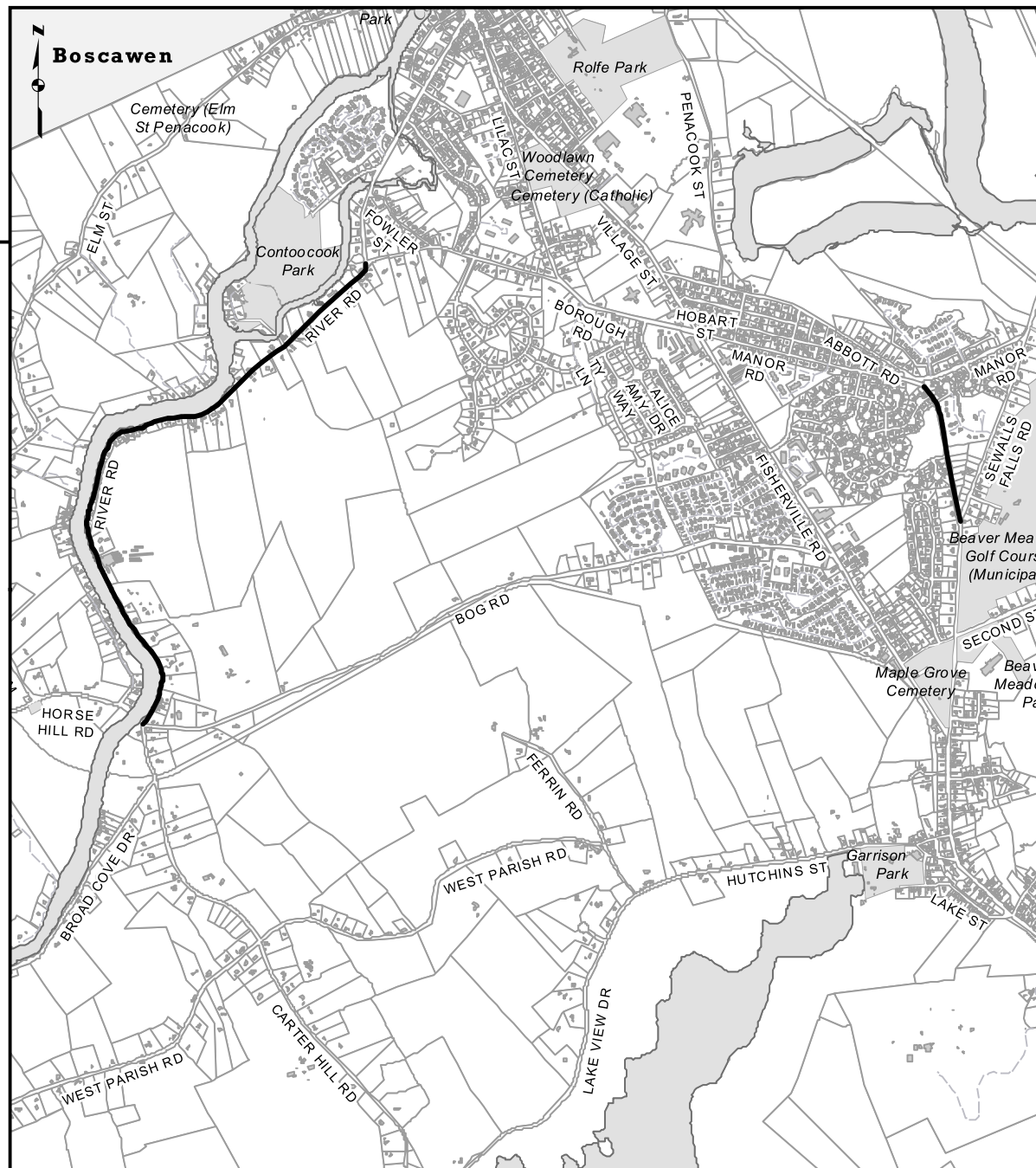
This map conforms to the United States National Map Accuracy Standards. It was prepared for use by the City of Concord and uses a database digitized at a scale of 1:1200. Enlargements may produce measurable discrepancies. The City makes no representations or guarantees of its accuracy or its suitability for use other than by the City. Users other than the City, do so at their own risk.

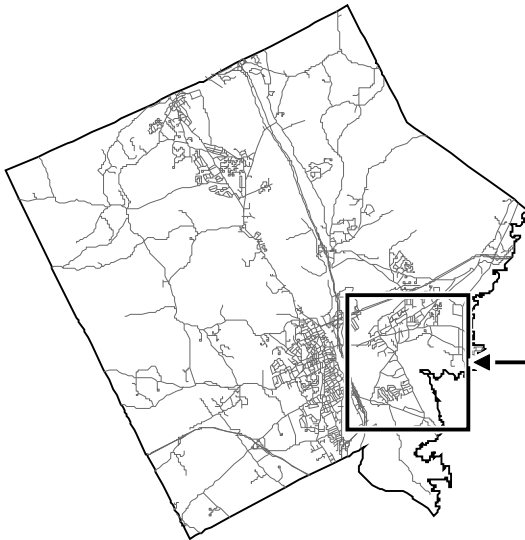
Not to Scale



**FY 2024
CIP PROJECT #78**

**ANNUAL HIGHWAY
IMPROVEMENT PROGRAM**





Disclaimer of Mapping Accuracy
Engineering Services Division
City of Concord, New Hampshire

GEOGRAPHIC INFORMATION SYSTEM

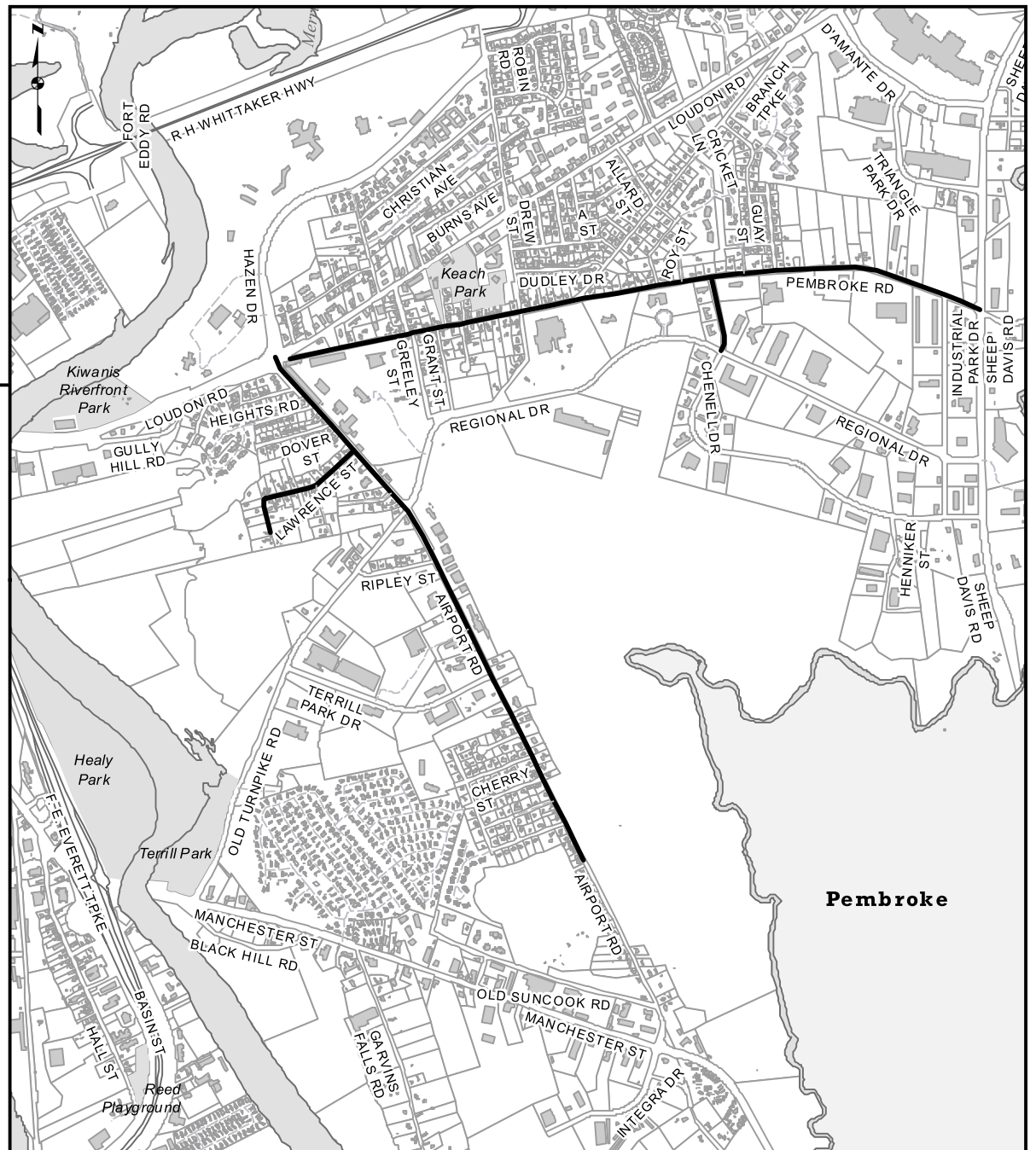
This map conforms to the United States National Map Accuracy Standards. It was prepared for use by the City of Concord and uses a database digitized at a scale of 1:1200. Enlargements may produce measurable discrepancies. The City makes no representations or guarantees of its accuracy or its suitability for use other than by the City. Users other than the City, do so at their own risk.

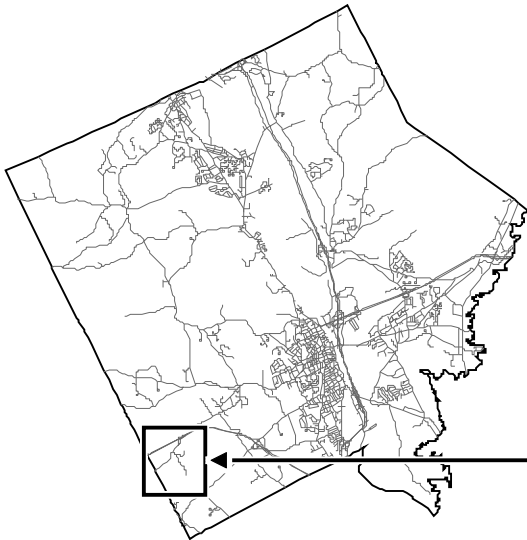
Not to Scale



**FY 2024
CIP PROJECT #78**

**ANNUAL HIGHWAY
IMPROVEMENT PROGRAM**





Disclaimer of Mapping Accuracy
Engineering Services Division
City of Concord, New Hampshire

GEOGRAPHIC INFORMATION SYSTEM

This map conforms to the United States National Map Accuracy Standards. It was prepared for use by the City of Concord and uses a database digitized at a scale of 1:1200. Enlargements may produce measurable discrepancies. The City makes no representations or guarantees of its accuracy or its suitability for use other than by the City. Users other than the City, do so at their own risk.

Not to Scale



**FY 2024
CIP PROJECT #78**

**ANNUAL HIGHWAY
IMPROVEMENT PROGRAM**

