

Concord, N.H. 03301
V. 3563 P. 942

MAP 651Z, LOT 71
JOSHUA WARREN
& AMANDA JACK
84 Penacook Street
Concord, NH 03301
V. 3527 P. 985

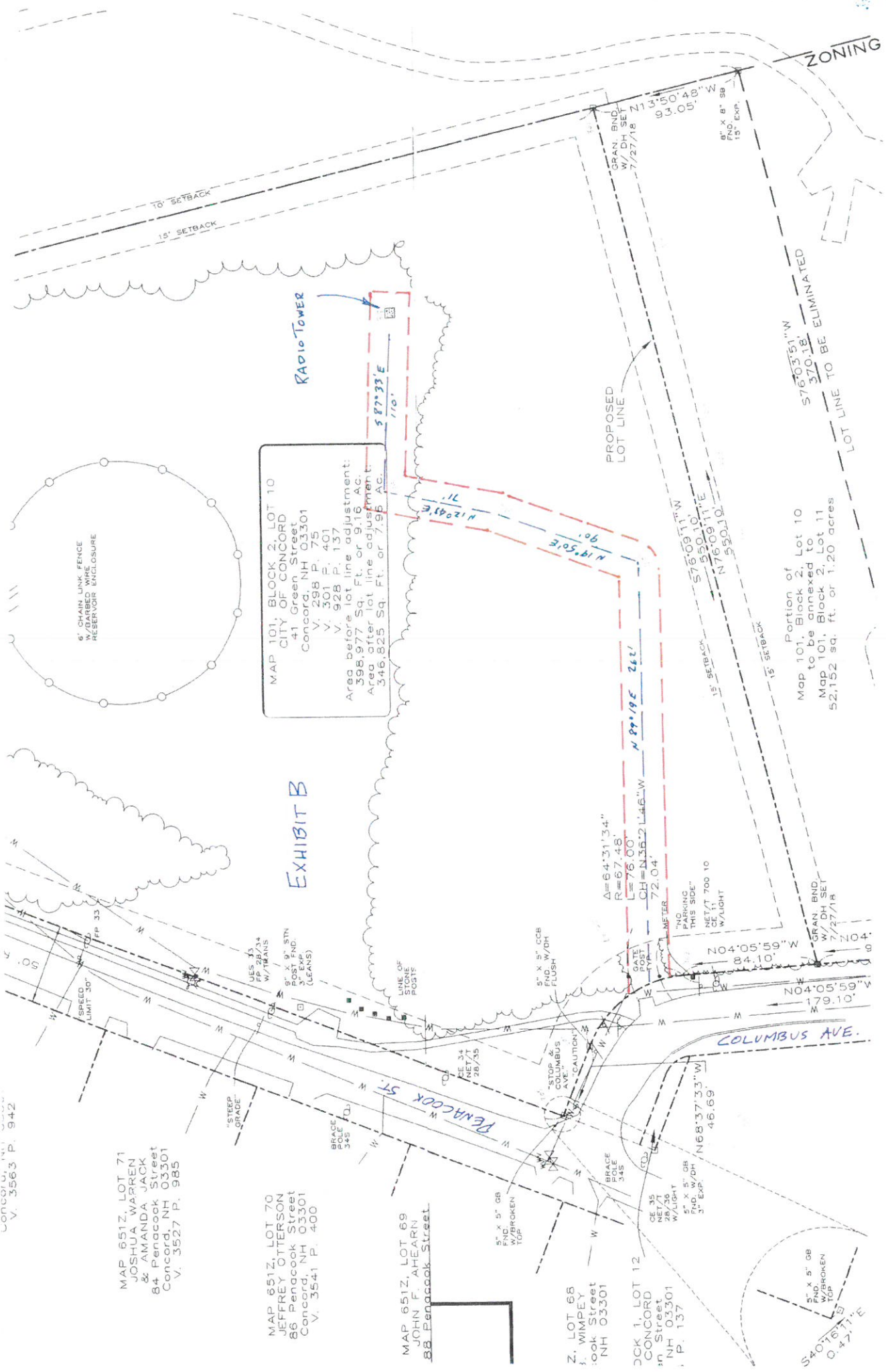
MAP 651Z, LOT 70
JEFFREY OTTERSON
86 Penacook Street
Concord, NH 03301
V. 3541 P. 400

MAP 651Z, LOT 69
JOHN F. AHEARN
88 Penacook Street

Z. LOT 68
WIMPEY
Concord Street
NH 03301

LOT 12
CONCORD
Concord Street
NH 03301
P. 137

5" x 5" OB
FND. BROKEN
TOP
S40°18'35"
Q. 47.71'E



MAP 101, BLOCK 2, LOT 10
CITY OF CONCORD
41 Green Street
Concord, NH 03301
V. 298 P. 75
V. 301 P. 401
V. 928 P. 137
Area before lot line adjustment:
398,977 Sq. Ft. or 9.16 Ac.
Area after lot line adjustment:
346,825 Sq. Ft. or 7.96 Ac.



EXHIBIT B

Portion of
Map 101, Block 2, Lot 10
to be annexed to
Map 101, Block 2, Lot 11
52,152 sq. ft. or 1.20 acres

ZONING

1, BLOCK 2, LOT 14
KEUPPER 2016 TRUST
1A T. KEUPPER 2016
TRUST

Bishopsgate
Concord, NH 03301
3529 P. 2335

CERTIFICATIONS

CERTIFY THAT THIS PLAT WAS PREPARED BY ME OR THOSE
DIRECT IMMEDIATE SUPERVISION, AND DEPICTS A SURVEY
WITH A TOTAL STATION HAVING AN URBAN CLASSIFICATION
UM ERROR OF CLOSURE LESS THAN 1:10,000.

[Signature] **741** **7/31/18**
LICENSE NO. DATE

APPROVED
UNDER THE PROVISIONS OF R.S.A. 674:35 & R.S.A. 674:36
CITY PLANNING BOARD
CITY OF CONCORD, NEW HAMPSHIRE
In accordance with vote of the board dated:
July 18, 2018
Approval of this plat is limited to lots as shown.
[Signature]
Clerk **8/17/18** Chair

**RICHARD D. BARTLETT
& ASSOCIATES, LLC**

214 North State Street
Concord, N.H. 03301
Tel.: (603) 225-6770

info@richarddbartlett.com
www.richarddbartlett.com

LICENSED LAND SURVEYORS



BARTLETT
& ASSOCIATES, LLC

**RESUBDIVISION PLAT
Land of CITY OF CONCORD
& MARGARET L. LASSONDE**

PROJECT: MAP 101, BLOCK 2, LOTS 10 & 11
LOCATION: 71 & 81 PENACOOK ST CONCORD NH

GRAPHIC SCALE



1" = 50'

DATE: JUNE 7, 2018

JOB NO.: 518.141

SHEET 1 OF 2