

PROJECT: SERVICE CREDIT UNION LOCATION: 285 LOUDON RD CONCORD, NH

1.	USE GROUP CLASSIFICATION:	BUSINESS (B)
2.	TYPE OF CONSTRUCTION:	V-B
3.	AREA:	2,344 SF
4.	HEIGHT ABOVE GRADE PLANE:	22'-0" (AVERAGE ROOF HEIGHT ABOVE GRADE)
5.	STORIES ABOVE GRADE:	1 STORIES
6.	SPRINKLER SYSTEM:	NOT REQUIRED. FULL FIRE ALARM SYSTEM REQUIRED
7.	ZONING CLASSIFICATION:	GWP (GATEWAY PERFORMANCE DISTRICT)

SERVICE CREDIT UNION BRANCH BUILDING CONSISTS OF A WOOD FRAMED ONE STORY, SLAB ON GRADE, NEW CONSTRUCTION BUILDING WITH TWO DRIVE-UP LANES AND A CANOPY. THE INTERIOR WORK WILL INCLUDE NEW CEILINGS, FINISHES, FURNITURE, AND EQUIPMENT. THE BUILDING IS NOT SPRINKLERED BUT IS EQUIPPED WITH A FULLY ADDRESSABLE FIRE ALARM SYSTEM.

THIS ANALYSIS WAS PERFORMED USING THE STANDARDS SET FOURTH IN 2021
INTERNATIONAL BUILDING CODE AND NH AMENDMENTS

ZONING	CITY OF CONCORD, NH SITE PLAN REGULATIONS
BUILDING	INTERNATIONAL BUILDING CODE 2021 (IBC) WITH NH AMENDMENTS
FIRE PREVENTION	NFPA 1, 2021 INTERNATIONAL FIRE CODE.
ACCESSIBILITY	NH ACCESSIBLE AND USABLE BUILDINGS AND FACILITIES 2009, ANSI A117.1-2009, 2010 ADA STANDARDS FOR ACCESSIBLE DESIGN
ELECTRICAL	NATIONAL ELECTRIC CODE NFPA 70 2020 WITH AMENDMENTS
MECHANICAL	2021 INTERNATIONAL MECHANICAL CODE WITH NH AMENDMENTS
PLUMBING	2021 INTERNATIONAL PLUMBING CODE WITH NH AMENDMENTS
ENERGY CONSERVATION	INTERNATIONAL ENERGY CONSERVATION CODE IECC 2021 WITH AMENDMENTS

SECTION 304 BUSINESS GROUP B – BANK

HEIGHT AND AREA ALLOWED: 2 STORIES (40 FEET) AND 9,000 SF / FLOOR

TABLE 601
PRIMARY STRUCTURAL FRAME, BEARING WALLS, NON-BEARING WALLS, FLOOR
CONSTRUCTION AND ROOF CONSTRUCTION WILL HAVE A "0 HOUR" FIRE RESISTANCE RATING.

TABLE 601
PRIMARY STRUCTURAL FRAME, BEARING WALLS, NON-BEARING WALLS, FLOOR
CONSTRUCTION AND ROOF CONSTRUCTION WILL HAVE A "0 HOUR" FIRE RESISTANCE RATING.

TABLE 602
>30 FEET BETWEEN BUILDINGS, TYPE VB "0 HOUR" FIRE RESISTANCE RATING

THE BUILDING IS NOT REQUIRED BE EQUIPPED WITH A FULLY AUTOMATIC SPRINKLER SYSTEM AS IT IS A 1-STORY (B) OCCUPANCY WITH AN AREA LESS THAN 5,000 SF.

OCCUPANT LOAD: TABLE 1004.5
 MAXIMUM FLOOR AREA ALLOWANCE PER OCCUPANT. BUSINESS AREAS 150 SF GROSS
 (2,344 SF / 150 = 16 OCCUPANTS CALCULATED)

NUMBER OF EXITS: TABLE 1006.2.1
 THERE WILL BE 1 PUBLIC EXIT PROVIDED, 2 EXITS TOTAL (1 FOR EMPLOYEES ONLY)

CAPACITY OF EGRESS COMPONENTS (1005.3.2)
 DOORS (16 X 2' = 3.2") 36" MINIMUM PROVIDED.

MAXIMUM TRAVEL DISTANCE: 68'-4" (100' ALLOWED: <30 OCCUPANTS UNSPRINKLERED)

ALL WORK PERFORMED WILL COMPLY WITH ICC A117.1. ACCESSIBLE AND USABLE BUILDINGS

ALL STRUCTURAL WORK PERFORMED WILL COMPLY WITH CHAPTER 16 OF THE 2021 IBC AS APPLICABLE.

ALL ELECTRICAL WORK WILL COMPLY WITH NFPA 70 AND OTHER APPLICABLE CODES

ALL MECHANICAL WORK WILL COMPLY WITH SECTION 2801 AND THE 2021 IMC AS APPLICABLE.

ALL PLUMBING & PLUMBING FIXTURES PERFORMED WILL COMPLY WITH SECTION 810 AS APPLICABLE. SEE TABLE FOR MINIMUM PLUMBING FIXTURES REQUIRED.

REFER TO COM CHECK COMPLIANCE REPORTS.

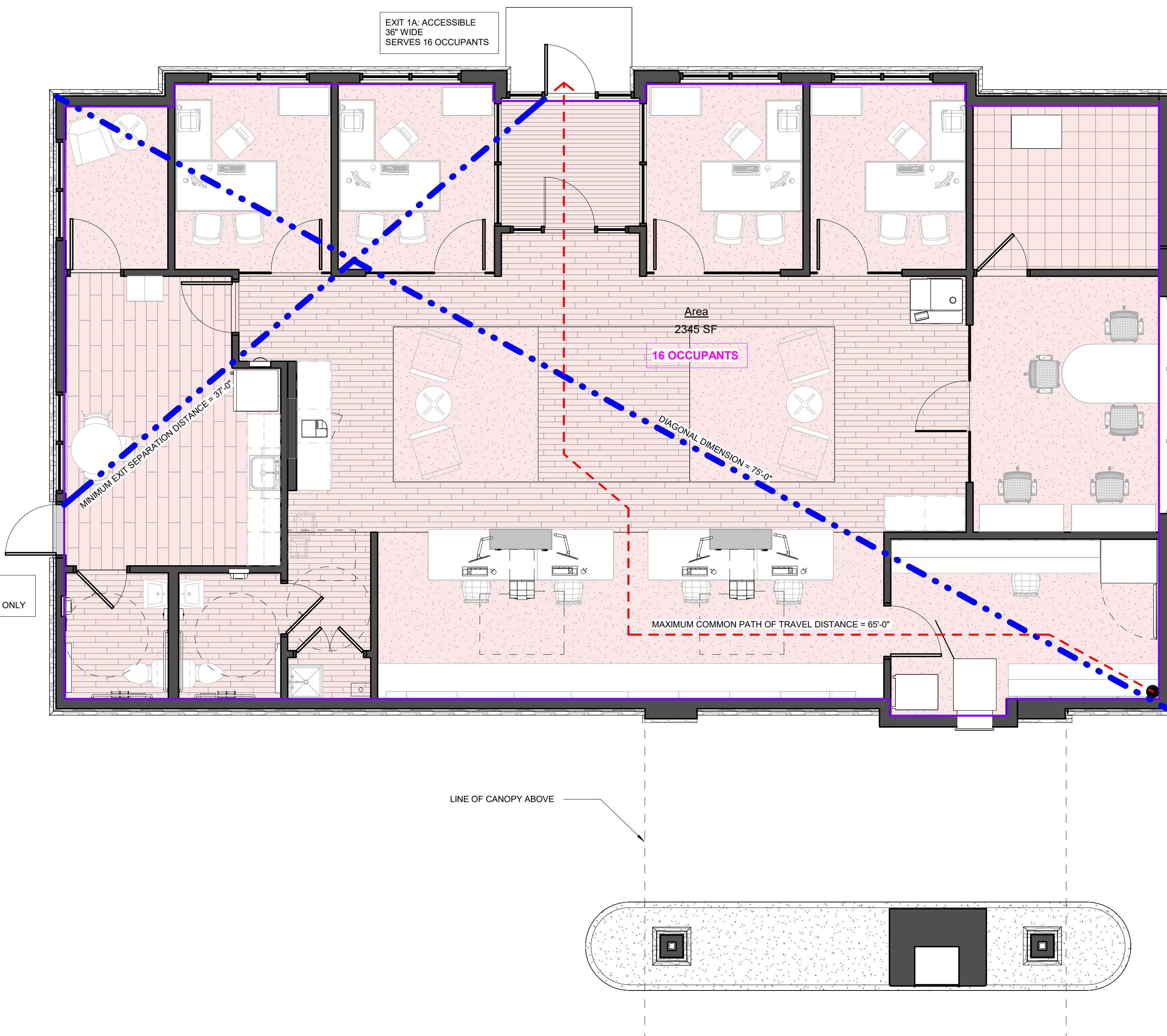
OCCUPANCY: (B) BUSINESS, 16 OCCUPANTS

	WATER CLOSETS		LAVATORIES		SHOWERS	DRINKING FOUNTAIN	OTHER
	MALE	FEMALE	MALE	FEMALE	-	-	-
PROVISION	1 PER 25 FOR THE FIRST 50 AND 1 PER 50 FOR THE REMAINDER EXCEEDING 50		1 PER 40 FOR THE FIRST 80 AND 1 PER 80 FOR THE REMAINDER EXCEEDING 80		0	1 PER 100	1 SERVICE SINK
REQUIRED	1	1	1	1	0	1	1
PROVIDED	1	1	1	1	0	2 + WATER DISPENSER	1

1. EMERGENCY LIGHTING NOT SHOWN. SEE ELECTRICAL PLANS IF APPLICABLE.
2. SMOKE AND HEAT DETECTORS NOT SHOWN. SEE FIRE ALARM PLANS IF APPLICABLE.
3. MAX DEAD END CORRIDOR WHEN 2 OR MORE EXITS ARE REQUIRED = 20'-0" NON SPRINKLERED, 50'-0" SPRINKLERED PER IBC 1020.4.
4. ONE EXIT ALLOWED PER TABLE 1006.2.1; < 30 OCCUPANTS = 100'; > 30-49 OCC. = 75' TRAVEL DISTANCE.
5. EXIT ACCESS TRAVEL DISTANCE WITH 2 OR MORE EXITS PER TABLE 1017.2: 250' OR 300' WITH AUTOMATIC SPRINKLER SYSTEM.

The diagram shows a fire alarm pull station with the following labels and features:

- EXIT XX XX WIDE**: Label for the exit width.
- EXIT LABELS**: General label for the exit information.
- FIRE EXTINGUISHER TYPE: ABC DRY OR AS SPECIFIED BY FIRE MARSHAL**: Label for the fire extinguisher type.
- FE**: Label for the fire extinguisher.
- FEC**: Label for the fire extinguisher count.
- 00**: Occupant count of the area.
- OCCUPANT COUNT OF AREA**: Label for the occupant count.
- X'-XX"**: Label for the egress path and distance from point to point.
- EGRESS PATH AND DISTANCE FROM POINT TO POINT**: Label for the egress path and distance.
- TOTAL TRAVEL DISTANCE**: Label for the total travel distance.
- DIAGONAL BUILDING MEASUREMENT AND EXIT SEPARATION DISTANCE**: Label for the diagonal building measurement and exit separation distance.
- EXISTING FIRE RATED WALLS - MAINTAIN RATING**: Label for the existing fire rated walls - maintain rating.



©COPYRIGHT NES GROUP ARCHITECTS, PC.
ALL RIGHTS RESERVED. NO USE OR REPRODUCTION OF THIS
MATERIAL IS PERMITTED WITHOUT THE WRITTEN CONSENT OF
NES GROUP ARCHITECTS, PC.

[illegible]

SCU - CONCORD, NH
285 LOUDON RD CONCORD, NH

PROJECT INFORMATION & CODE ANALYSIS

Project Number	25003
Project Status	Project Status
Date	Issue Date
Drawn By	Author
Checked By	Checker

A001

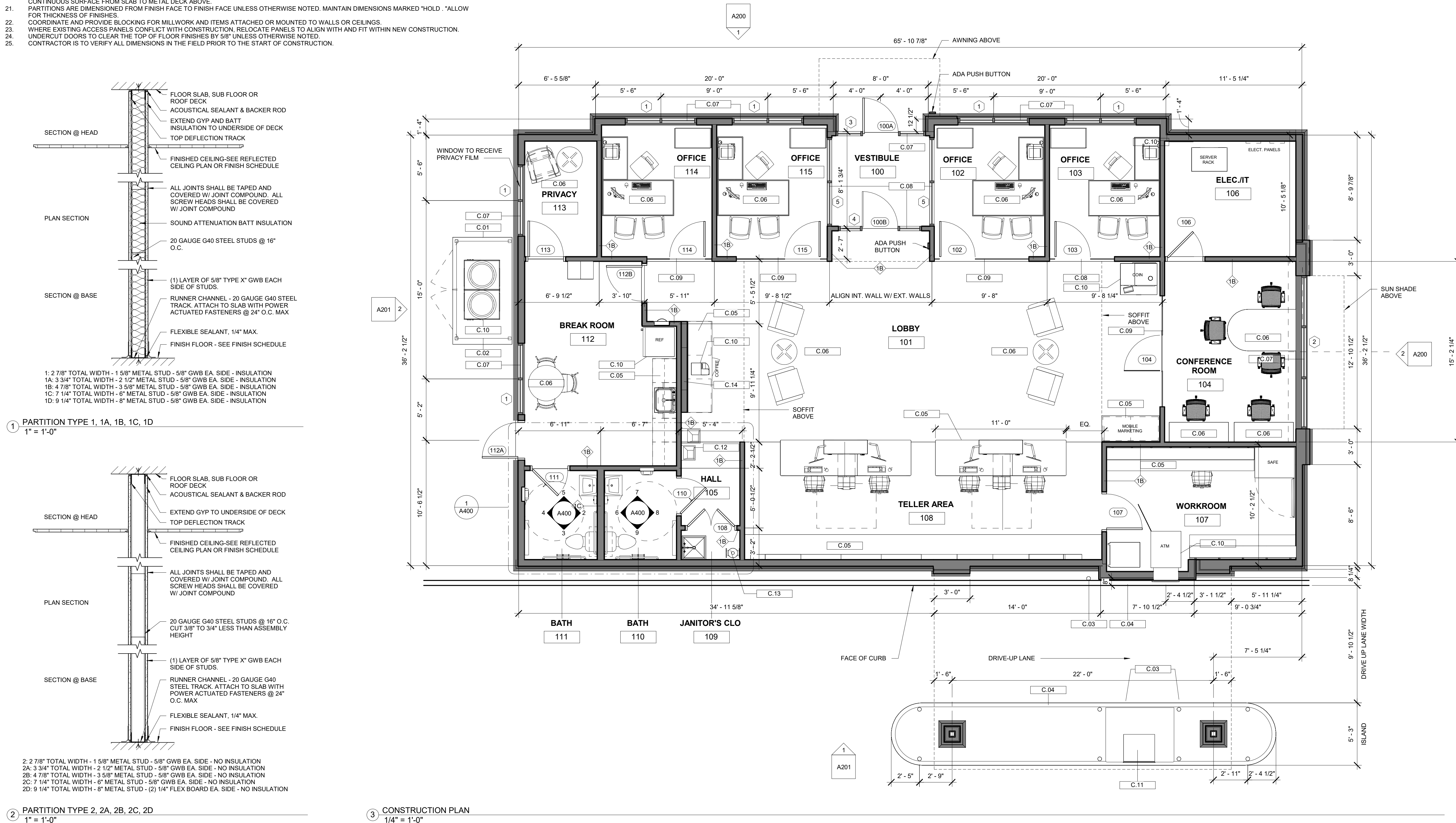
Scale	As indicated
-------	--------------

DO NOT SCALE DRAWING, USE DIMENSIONS SHOWN.
VERIFY ALL DIMENSIONS ON SITE.

1. PATCH/PAINT PERIMETER GYPSUM WALL CONDITIONS AT LOCATIONS OF PRIOR PARTITIONS, COLUMN ENCLOSURES AND ALL CORE WALLS. TYPICAL.
2. PROVIDE AND COORDINATE ALL FIRE RETARDANT WALL BLOCKING AT DEMOUNTABLE WALL PARTITIONS, & MILLWORK LOCATIONS. G.C. TO COORDINATE WITH DEMOUNTABLE WALL PARTITIONS, AUDIO-VISUAL & MILLWORK DETAILS.
3. PROVIDE DOUBLE STUDS AT ALL DOOR OPENINGS.
4. PROVIDE FRAMING AS REQUIRED AROUND HVAC AND PLUMBING EQUIPMENT THAT INTERRUPT WALL PORTIONS AND SECURE TO THE UNDERSIDE OF THE SLAB ABOVE.
5. GC/PC SHALL INCLUDE FOR ALL PLUMBING: GC/PC SHALL VERIFY PRIOR BID & INCLUDE PRICING FOR A COMPLETE PLUMBING SUPPLY AND DRAIN SYSTEM. WHETHER IT IS A GAVITY DRAIN OR EJECTOR PUMP. INCLUDE ALL EJECTOR PUMPS REQUIRED TO COMPLETE THE COMPLETE SYSTEM. COORDINATION OF ALL TRADES SHALL INCLUDE ANY MISC. ITEMS REQUIRED FOR THE PROPOSED DESIGN. GC/PC SHALL PROVIDE THE REQUIRED ENGINEERING DOCUMENTS AND SUBMIT THEM TO AUTHORITIES AS REQUIRED FOR PERMITTING.
6. PATCH AND REPAIR DAMAGED EXISTING AND/OR NEW TO MATCH EXISTING ADJACENT SURFACES. PROPERLY PREPARE EXISTING SURFACE TO RECEIVE NEW FINISH BY FURROUT OR LAMINATE W/58" GWS FINISH AS REQUIRED BY FIELD CONDITIONS.
7. IF CEILING HEIGHT IS RAISED, BRING WALL CONSTRUCTION AND FINISH TO NEW HEIGHT.
8. PARTITION SNAP LINE LAYOUT SHALL BE REVIEWED BY THE ARCHITECT'S FIELD REPRESENTATIVE PRIOR TO COMMENCING CONSTRUCTION.
9. REFER TO THE CONSTRUCTION PLAN FOR WALL TYPES.
10. GLASS/SLIDER CABINET SHALL BE PER CONSTRUCTION PLANS.
11. G.C. SHALL VERIFY THAT EXISTING DOOR HARDWARE TO REMAIN IF FUNCTIONING PROPERLY. REPAIR OR REPLACE DAMAGED HARDWARE FOR SMOOTH OPERATION AND HANDICAP COMPLIANCE.
12. PROVIDE WATER LINE AT KITCHENETTE AS SPECIFIED BY MFG. FOR COFFEE MAKERS, ICE MAKERS, WATER FILTERS, FREEZERS ETC. REFER TO THE EQUIPMENT LIST AND PROVIDE A COMMUNICATION PLANS FOR ADDITIONAL INFORMATION AND EQUIPMENT LOCATIONS.
13. REPAIR ALL EXISTING SUBFLOORS WHERE REQUIRED. PROPERLY LEVEL AND PREPARE SUBSTRATE TO RECEIVE NEW FLOOR FINISH.
14. STUD LOCATION SHALL BE COORDINATED WITH MOUNTING DEVISIONS AND ORIENTATION OF ALL DEVICES AS DESCRIBED ON STUD MOUNTING LOCATIONS DWG. INFO AND POWER & COMMUNICATION PLANS. PROVIDE CROSS-STUD AS REQUIRED TO ENSURE PROPER ALIGNMENT.
15. CROSS BRACE ALL DOOR FRAMES AND SECURE THEM TO THE STRUCTURE ABOVE.
16. ALL ACTIVE ACCESS PANELS, SWITCHES, POWER & TES SHALL BE REPLACED WITH NEW ONES AND BROUGHT OUT TO THE NEW FINISH SURFACE. PROVIDE NEW FINISH MATERIAL OVER THE ACCESS PANEL TO MATCH THE ADJACENT FINISH.
17. G.C. SHALL REPAIR ALL NEW & EXISTING HOLES OR PENETRATIONS IN ALL FIRE-RATED PARTITIONS ABOVE AND BELOW THE CEILING TO MAINTAIN THE EXISTING FIRE-RATING REQUIREMENT. (V.I.F.)
18. G.C. IS RESPONSIBLE FOR THE REPAIR AND/OR REPLACEMENT OF ANY DAMAGED EXISTING CONVECTOR ENCLOSURES. REPLACE MISSING GRILLS WHERE REQUIRED.
19. G.C. IS RESPONSIBLE FOR REPAIRING ALL EXISTING PERIMETER MULLIONS WHERE REQUIRED.
20. REMOVE EXISTING WALL FINISHES AND RECEPTABLES AT PERIMETER COLUMNS. PATCH & REPAIR COLUMN ENCLOSURES TO PROVIDE A CLEAN AND CONTINUOUS SURFACE FROM FLOORS TO MILLWORK.
21. PARTITIONS ARE DIMENSIONED FROM FINISH FACE TO FINISH FACE UNLESS OTHERWISE NOTED. MAINTAIN DIMENSIONS MARKED "HOLD" ALLOW FOR THICKNESS OF FINISHES.
22. COORDINATE AND PROVIDE BLOCKING FOR MILLWORK AND ITEMS ATTACHED OR MOUNTED TO WALLS OR CEILINGS.
23. EXISTING ACCESS PANELS CONFLICT WITH CONSTRUCTION. RELOCATE PANELS TO ALIGN WITH AND FIT WITHIN NEW CONSTRUCTION.
24. UNDERDOOR DOORS TO CLEAR THE TOP OF FLOOR FINISHES BY 5/8" UNLESS OTHERWISE NOTED.
25. CONTRACTOR IS TO VERIFY ALL DIMENSIONS IN THE FIELD PRIOR TO THE START OF CONSTRUCTION.

	NEW PARTITION - SEE PARTITION TYPES		LINE ABOVE (CEILING, SOFFIT, MILLWORK, ETC.)
			WALL TYPE TAG. SEE WALL TYPES
	NEW HALF WALL TO CONSTRUCTION		ROOM NAME ROOM TAG
	REVISION TAG		DOOR TAG - SEE DOOR SCHEDULE
	NEW DOOR. SEE DOOR SCHEDULE		FINISH TAG. SEE FINISH SCHEDULE
			

MARK	DESCRIPTION
C.01	6" CONC. PAD FOR MECH. EQUIPMENT. VERIFY EXACT SIZE W/ MECH. DWGS & UNIT CLEARANCES. CENTER BETWEEN WINDOWS. REFER TO CIVIL DWGS.
C.02	8 FT HIGH VINYL FENCE ENCLOSURE W/ DOUBLE DOOR GATE FOR SERVICING.
C.03	4" CONC. BOLLARD W/ WHITE VINYL COVER. REFER TO CIVIL DRAWINGS.
C.04	6" CURB. REFER TO CIVIL DRAWINGS
C.05	MILLWORK/CASEWORK. REFER TO ENLARGED MILLWORK PLANS & DETAILS. G.C. TO COORDINATE BACKING/SUPPORT FOR ALL WALL MOUNTED FIXTURES.
C.06	FURNITURE BY FURNITURE VENDOR. (N.I.C.)
C.07	TRIFAB VERSAGLAZE 451T THERMALLY BROKEN STOREFRONT SYSTEM BY KAWNEER. PROVIDE 1" INSULATED GLASS (CENTER GLAZED) AND CLEAR ANODIZED ALUMINUM FINISH.
C.08	TRIFAB VERSAGLAZE 450 STOREFRONT SYSTEM BY KAWNEER. PROVIDE 3/4" CLEAR TEMPERED GLASS (CENTER GLAZED) AND CLEAR ANODIZED ALUMINUM FINISH.
C.09	FRAMELESS OFFICE FRONT BY CRL. PROVIDE BUTT GLAZED JOINTS W/ 1/2" TEMPERED GLASS PER MANUF. STD. DETAILS AND CLEAR ANODIZED ALUMINUM FINISH. WINDOW FROSTING GRAPHICS BY OTHERS.
C.10	BANK EQUIPMENT (N.I.C.) G.C. TO COORDINATE INSTALLATION. REFER TO EQUIPMENT PLAN & SCHEDULE.
C.11	ATM DRIVE-UP EQUIPMENT. REFER TO EQUIPMENT SCHEDULE.
C.12	B-LEVEL ADA DRINKING FOUNTAIN W/ INTEGRAL BOTTLE FILLING STATION BY ELKAY. MODEL # EZSTL8WSLK
C.13	WALL MOUNTED SHELVES AND WATER HEATER. REFER TO MEP DWGS FOR WATER HEATER SPECIFICATIONS.
C.14	WALL MOUNTED TV. VERIFY MOUNTING HEIGHT IN FIELD. G.C. TO COORDINATE POWER AND DATA OUTLETS AND BLOCKING FOR SUPPORT.



905 S. Main St. Bldg B Ste 201
Mansfield, MA 02048

781-331-8541
grouparchitects.com

©COPYRIGHT NES GROUP ARCHITECTS, PC.
ALL RIGHTS RESERVED. NO USE OR REPRODUCTION OF THIS
MATERIAL IS PERMITTED WITHOUT THE WRITTEN CONSENT OF
NES GROUP ARCHITECTS, PC.

[illegible]

SCU - CONCORD, NH
285 LOUDON RD CONCORD, NH

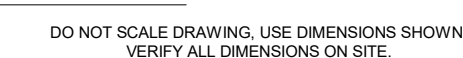
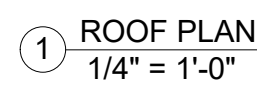
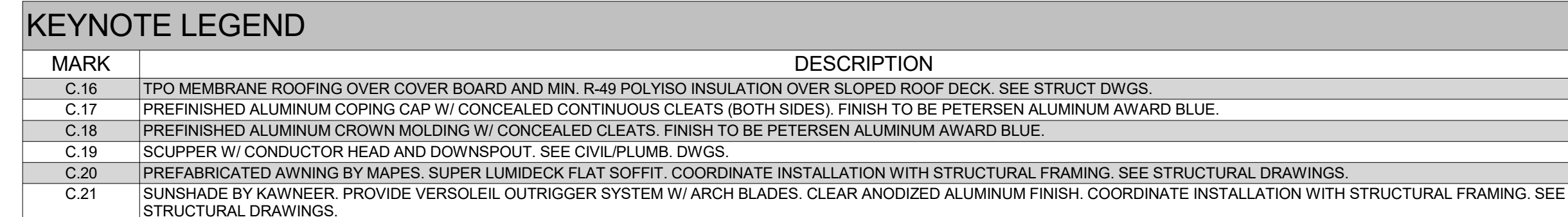
CONSTRUCTION FLOOR PLAN

Project Number	25003
Project Status	Project Status
Date	Issue Date
Drawn By	SMG
Checked By	Checker

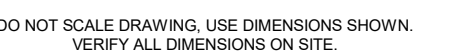
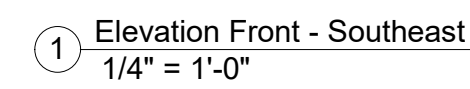
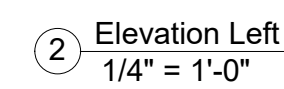
A101

Scale	As indicated
-------	--------------

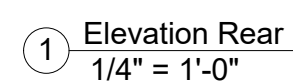
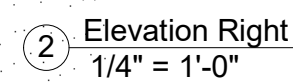
DO NOT SCALE DRAWING, USE DIMENSIONS SHOWN.
VERIFY ALL DIMENSIONS ON SITE.



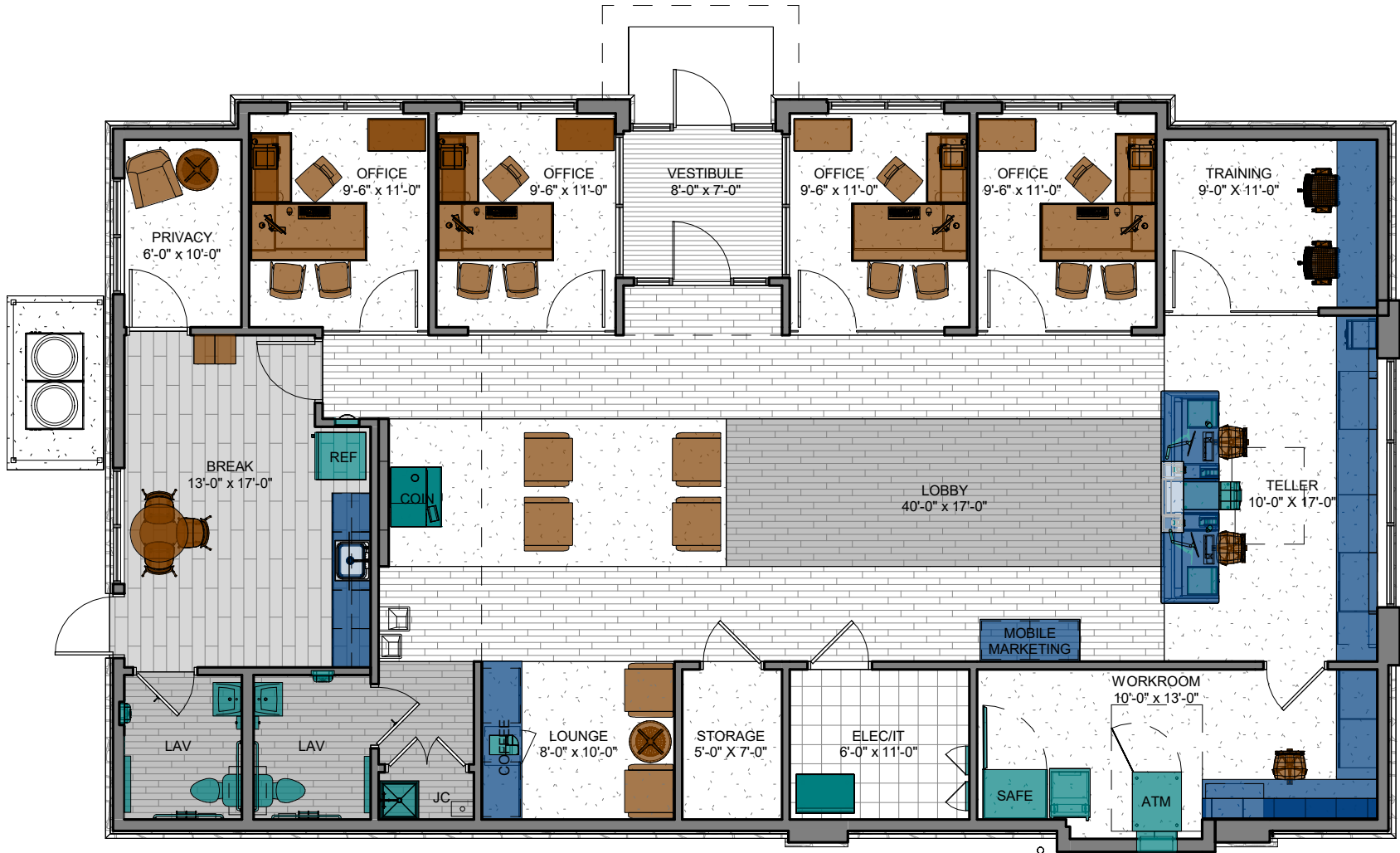
KEYNOTE LEGEND	
MARK	DESCRIPTION
E.01	THIN STONE VENEER BY DELGADO STONE. PROVIDE NEW YORK BLEND WITH ASHLAR PATTERN. INCLUDE STONE SILL & INSTALL PER MANUFACTURER'S STANDARD GUIDELINES.
E.02	FIBER CEMENT VERTICAL PANELS BY NICHIAH. PROVIDE VINTAGEWOOD SERIES IN BARK FINISH. PROVIDE ALL TRIM & ACCESSORIES FOR A COMPLETE INSTALLATION. FOLLOW MANUFACTURER'S STANDARD GUIDELINES FOR INSTALLATION.
E.03	E.I.F.S. - DRYVIT OUTSULATION PLUS MD SYSTEM IN SUPER WHITE. EPS INSULATION TO BE 2" MIN IN DEPTH WITH 1/4" x 1" GROOVES ON THE BACK SIDE FOR DRAINAGE. PROVIDE 1" REVEALS AS INDICATED ON ELEVATIONS. MIN. 3/4" EPS DEPTH AT REVEALS. INSTALL PER MANUFACTURER'S STANDARD GUIDELINES.
E.04	032" PREFINISHED ALUMINUM ROOF EDGE SYSTEM & CROWN MOLDING BY PAC-CLAD / PETERSEN ALUMINUM. COLOR: AWARD BLUE. INSTALL PER MANUFACTURER'S STANDARD INSTALLATION METHODS. PROVIDE CONCEALED CONTINUOUS GLAZES, SPLICE PLATES, MITERED CORNERS, AND END CAPS.
E.05	STOREFRONT WINDOW SYSTEM BY KAWNEER. PROVIDE TRIFLEX VERSAGLAZE 451T (THERMALLY BROKEN) 2" SIGHTLINES & 4-1/2" DEPTH - CLEAR ANODIZED. USE 350 MEDIUM STYLE DOORS W/ 10" BOTTOM RAILS. COORDINATE DOORS W/ AUTOMATIC OPENERS/CLOSERS, CARD READERS, AND ELECTRIC STRIKES. PROVIDE 1" LOW-E INSULATED GLASS. INSTALL PER MANUFACTURER'S STANDARD INSTALLATION GUIDELINES.
E.06	SUNSHADE BY KAWNEER. PROVIDE VERSOLEIL OUTRIGGER SYSTEM W/ ARCH BLADES. CLEAR ANODIZED ALUMINUM FINISH. COORDINATE INSTALLATION WITH STRUCTURAL FRAMING. SEE STRUCTURAL DRAWINGS.
E.07	PREFABRICATED AWNING BY MAPES. SUPER LUMIDECK FLAT SOFFIT IN BLACK. COORDINATE INSTALLATION WITH STRUCTURAL FRAMING. SEE STRUCTURAL DRAWINGS.
E.11	8 FT HIGH WHITE VINYL FENCE W/ STEEL FRAME BACK AND ALUMINUM STIFFENERS IN POSTS AND HORIZONTAL RAILS. COORDINATE POST MOUNTING WITH STRUCTURAL CONCRETE FOOTING. POSTS TO BE 8 FT MAX. SPACING ON CENTER. PROVIDE EQUAL SECTIONS. PROVIDE INTEGRAL GATE AS SHOWN ON DRAWINGS. REFER TO CIVIL DRAWINGS.
E.12	SIGNAGE BY OTHERS (N.I.C.)
E.13	EXTERIOR WALL SCONCE. REFER TO LIGHTING FIXTURE SCHEDULE. SEE CIVIL AND ELECTRICAL DRAWINGS.

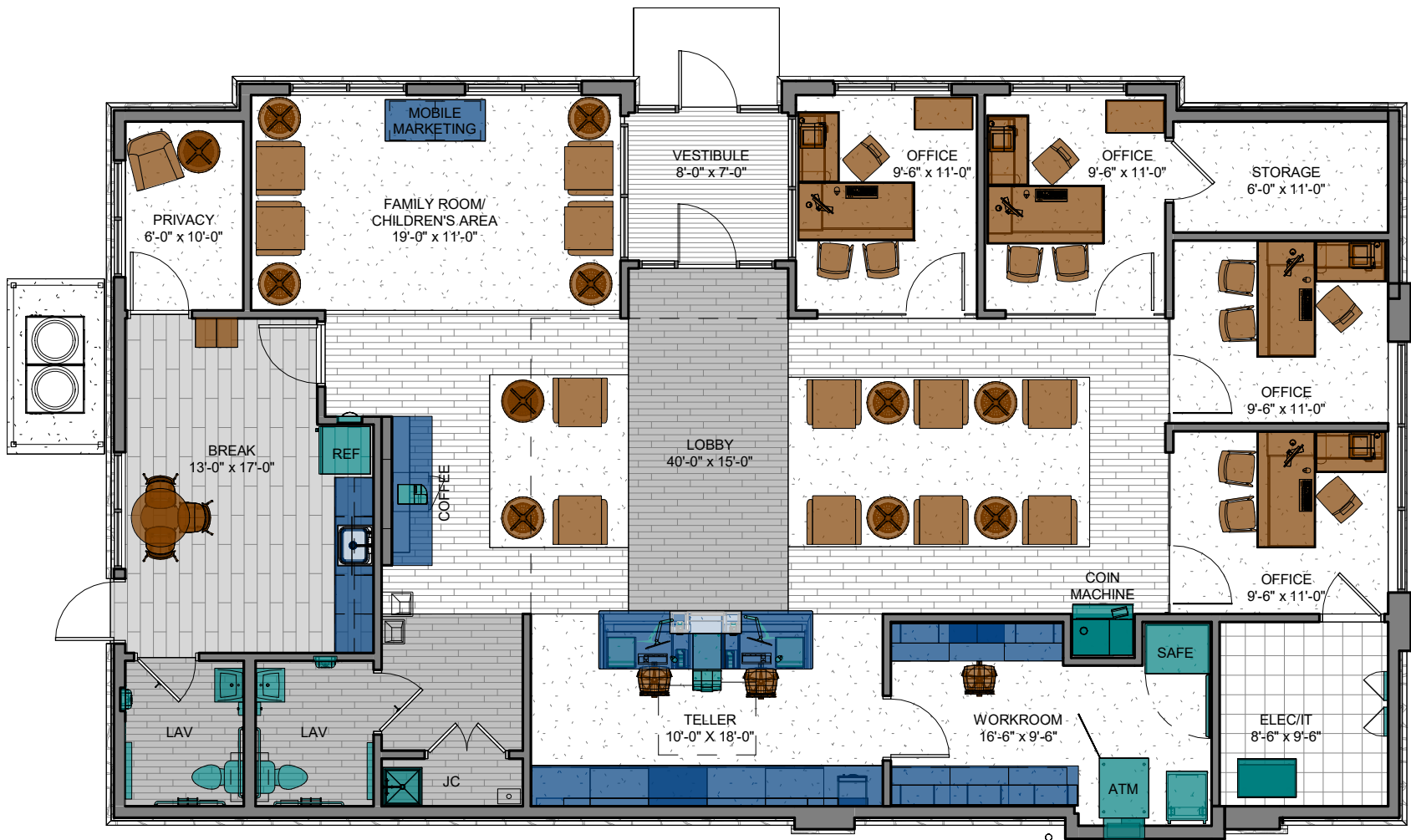


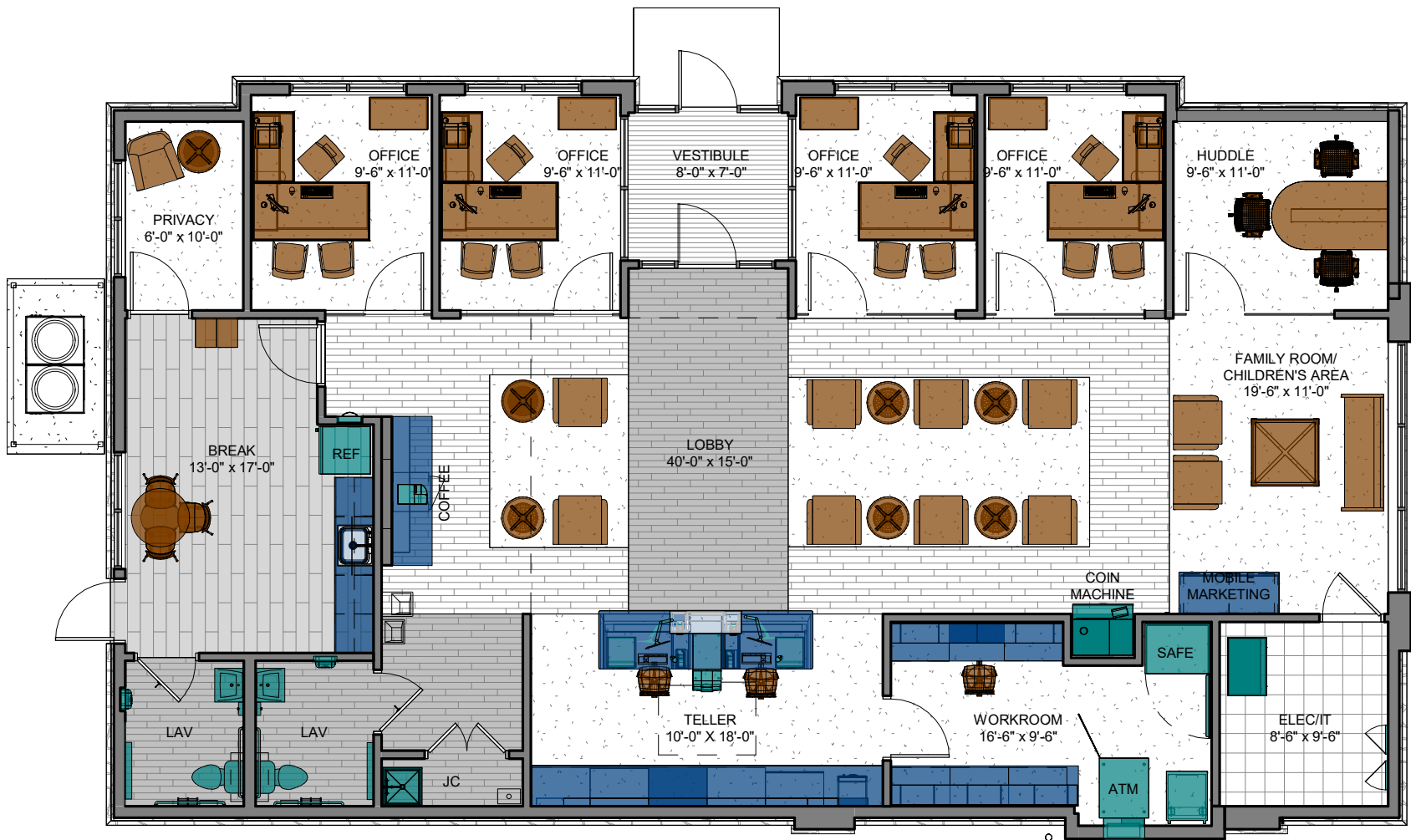
KEYNOTE LEGEND	
MARK	DESCRIPTION
E.01	THIN STONE VENEER BY DELGADO STONE. PROVIDE NEW YORK BLEND WITH ASHLAR PATTERN. INCLUDE STONE SILL & INSTALL PER MANUFACTURER'S STANDARD GUIDELINES.
E.02	FIBER CEMENT VERTICAL PANELS BY NICHIA. PROVIDE VINTAGEWOOD SERIES IN BARK FINISH. PROVIDE ALL TRIM & ACCESSORIES FOR A COMPLETE INSTALLATION. FOLLOW MANUFACTURER'S STANDARD GUIDELINES FOR INSTALLATION.
E.03	E.I.F. S. - DRYVIT OUTSULATION PLUS MD SYSTEM IN SUPER WHITE. EPS INSULATION TO BE 2" MIN IN DEPTH WITH 1/4" X 1" GROOVES ON THE BACK SIDE FOR DRAINAGE. PROVIDE 1" REVEALS AS INDICATED ON ELEVATIONS. MIN. 3/4" EPS DEPTH AT REVEALS. INSTALL PER MANUFACTURER'S STANDARD GUIDELINES.
E.04	.032" PREFINISHED ALUMINUM ROOF EDGE SYSTEM & CROWN MOLDING BY PAC-CLAD / PETERSEN ALUMINUM. COLOR: AWARD BLUE. INSTALL PER MANUFACTURER'S STANDARD INSTALLATION METHOD. PROVIDE CONCEALED CONTINUOUS GLEATS, SPICE PLATES, MITERED CORNERS, AND END CAPS.
E.05	STOREFRONT WINDOW SYSTEM BY KAWNEER. PROVIDE TRIAB VERSAGLAZE 451T (THERMALLY BROKEN) 2" SIGHTLINES X 4-1/2" DEPTH - CLEAR ANODIZED. USE .350 MEDIUM STYLE DOORS W/ 10" BOTTOM RAILS. COORDINATE DOORS W/ AUTOMATIC OPENERS/CLOSERS, CARD READERS, AND ELECTRIC STRIKES. PROVIDE 1" LOW-E INSULATED GLASS. INSTALL PER MANUFACTURER'S STANDARD INSTALLATION GUIDELINES.
E.06	SUNSHADE BY KAWNEER. PROVIDE VERSOLEIL OUTRIGGER SYSTEM W/ ARCH BLADES. CLEAR ANODIZED ALUMINUM FINISH. COORDINATE INSTALLATION WITH STRUCTURAL FRAMING. SEE STRUCTURAL DRAWINGS.
E.07	PREFABRICATED AWNING BY MAPEI. SUPER LUMIDECK FLAT SOFFIT IN BLACK. COORDINATE INSTALLATION WITH STRUCTURAL FRAMING. SEE STRUCTURAL DRAWINGS.
E.08	5X5 ALUMINUM DISCOUT SCULPTURE IN BLACK FINISH. TIE INTO UNDERGROUND STORMWATER SEWER SYSTEM. SEE PLUMBING DRAWINGS.
E.09	EXTRUDED ALUMINUM LOUVER W/ WHITE FINISH. COORDINATE WITH MECHANICAL LAYOUT. SEE MECHANICAL DRAWINGS.
E.10	4" CONCRETE BOLLARD 36" ABOVE CURB W/ WHITE VINYL COVERS. COORDINATE WITH STRUCTURAL CONCRETE FOOTING. REFER TO CIVIL DRAWINGS.
E.11	8 FT HIGH WHITE VINYL FENCE W/ STEEL FRAME BACK AND ALUMINUM STIFFENERS IN POSTS AND HORIZONTAL RAILS. COORDINATE POST MOUNTING WITH STRUCTURAL CONCRETE FOOTING. POSTS TO BE 8 FT MAX. SPACING ON CENTER. PROVIDE EQUAL SECTIONS. PROVIDE INTEGRAL GATE AS SHOWN ON DRAWINGS. REFER TO CIVIL DRAWINGS.
E.13	EXTERIOR WALL SCONE. REFER TO LIGHTING FIXTURE SCHEDULE. SEE CIVIL AND ELECTRICAL DRAWINGS.













FRONT VIEW
 SCU - CONCORD, NH
 285 LOUDON RD CONCORD, NH





SIDE VIEW
 SCU - CONCORD, NH
 285 LOUDON RD CONCORD, NH





DRIVE-UP VIEW
 SCU - CONCORD, NH
 285 LOUDON RD CONCORD, NH





REAR VIEW
 SCU - CONCORD, NH
 285 LOUDON RD CONCORD, NH

