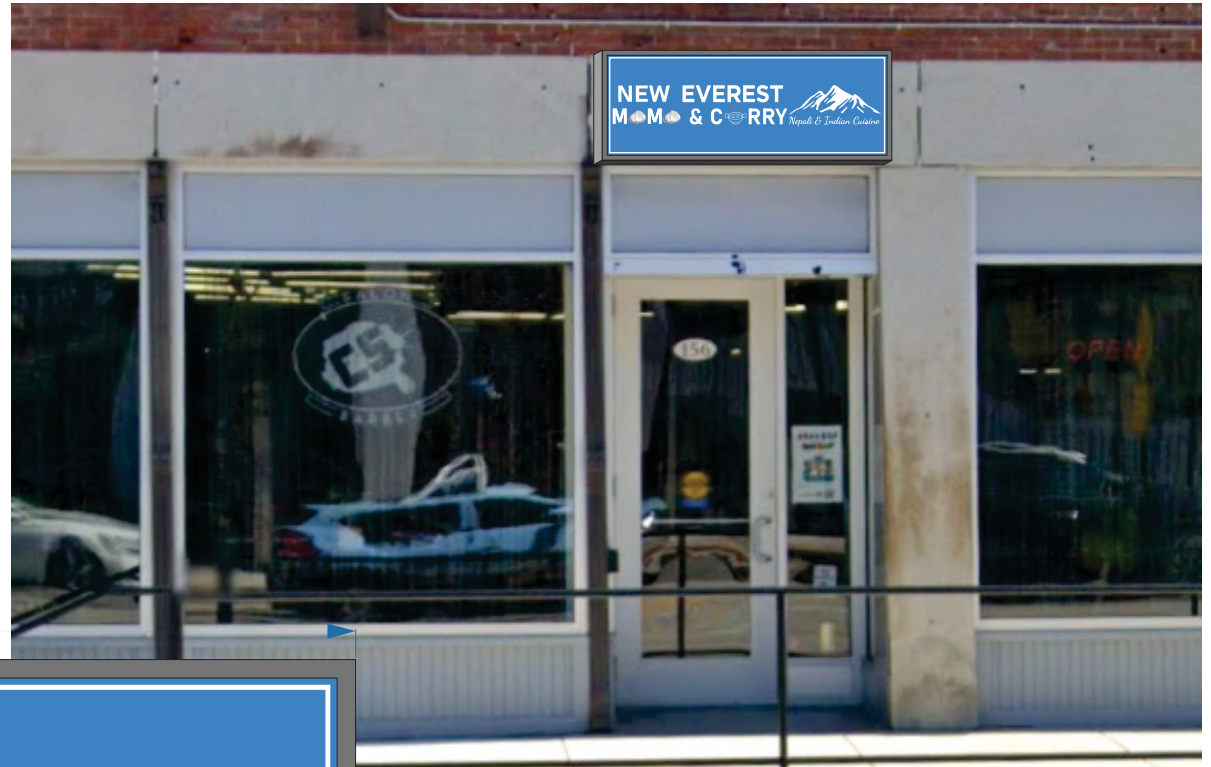


DATE: 12.11.24 CUSTOMER: New Everest Momo & Curry

249 SHEEP DAVIS ROAD, CONCORD, NH 603-225-4081



58"

22"

4"

NEW EVEREST  
MOMO & CURRY   
Nepali & Indian Cuisine

*Designer's Note: PDF file for approval. Colors may vary depending on software, drivers and platforms.*

*Prepared: Authorized pre-release form.*

*All Rights Reserved. These plans and materials may not be copied, duplicated, replicated or otherwise reproduced in any form whatsoever without prior written permission of SAR of concord.*

*This plan is not effective unless signed by a duly authorized agent of SAR Concord.*

**Please Double Check Spelling and Punctuation and Accuracy. We Are Not Responsible for Errors Once The Proof Has Been Approved**

MATERIAL: Sign Cabinet with Dibond Insert

SS / DS: Single Sided

DESIGNER: P Dubis

APPROVAL: