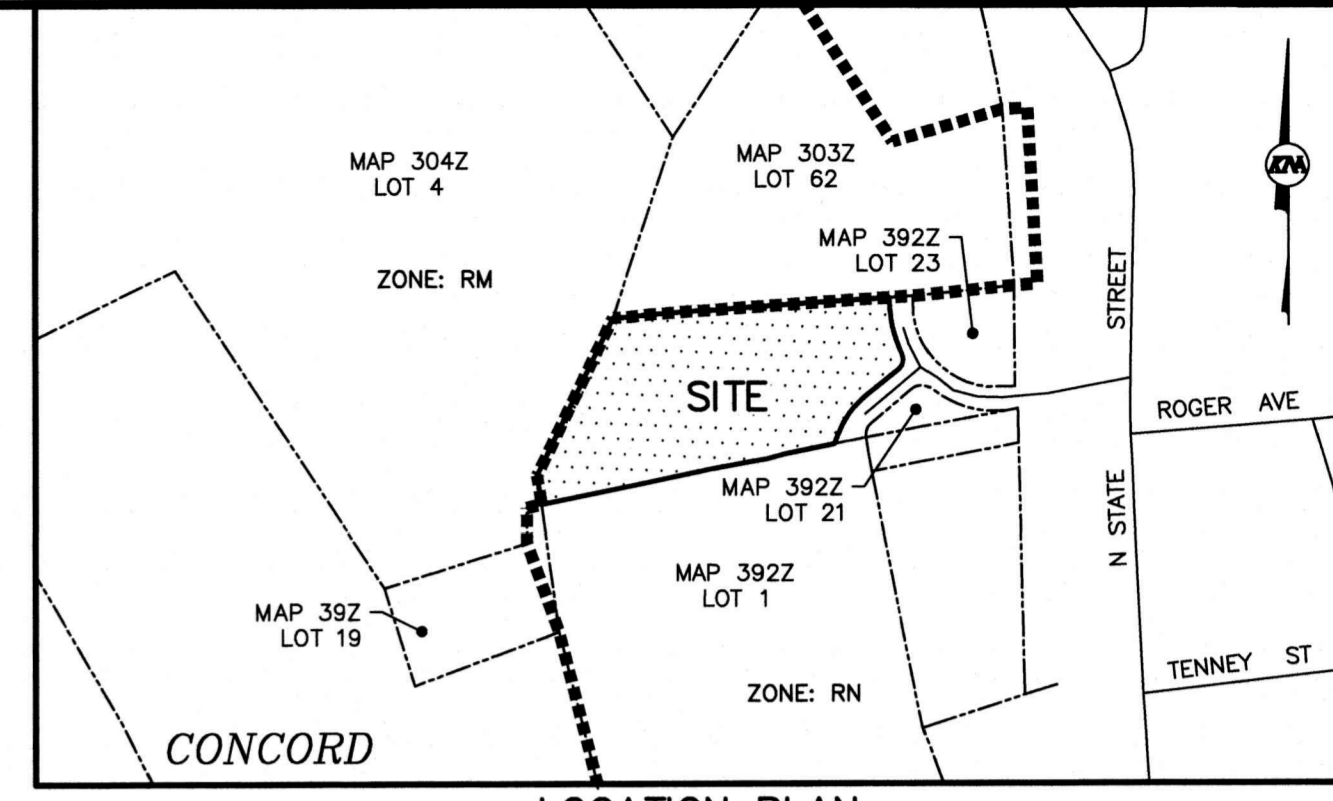


VICINITY PLAN
SCALE: 1" = 1000'



LOCATION PLAN
SCALE: 1" = 400'

REFERENCE PLANS

- "SUBDIVISION PLAT OF THE LAND OF EMMANUEL T. JR. & JUDITH I. BROCHU". SCALE: 1"=50'. DATED: DECEMBER 17, 2007. PREPARED BY: RICHARD D. BARTLETT & ASSOCIATES, LLC. M.C.R.D. PLAN #19397
- "RESIDENTIAL SITE PLAN PARMENTER PLACE, CONCORD, NEW HAMPSHIRE". SCALE: 1"=20'. DATED: MAY 2007. REVISED: FEBRUARY 10, 2010. PREPARED BY: KEACH-NORDSTROM ASSOCIATES, INC.
- "RESIDENTIAL SITE PLAN PARMENTER PLACE PHASE II, CONCORD, NEW HAMPSHIRE". SCALE: 1"=50'. DATED APRIL 15, 2025. REVISED: FEBRUARY 4, 2026. PREPARED BY: KEACH-NORDSTROM ASSOCIATES, INC. CONDITIONALLY APPROVED BY THE CONCORD PLANNING BOARD, NOT YET RECORDED.

MAP 303Z LOT 62
ARANOSIAN REALTY LLC
557 N STATE STREET
CONCORD, N.H. 03301-3236
FISHERVILLE ROAD
CONCORD, N.H. 03301-3236
BK. 2381 PG. 1286

MAP 304Z LOT 4
DEOSS DISTER L REVOCABLE TRUST
DEOSS DISTER L JR TRUSTEE
PO BOX 658
CONCORD, N.H. 03302-0658
HUTCHINS STREET
CONCORD, N.H. 03302-0658
BK. 3562 PG. 930

OPEN SPACE & DRAINAGE
EASEMENT LOT
MAP 392Z LOT 23
PARMENTER PLACE
23 GREEN STREET
CONCORD, N.H. 03301-4021
PARMENTER ROAD
CONCORD, N.H. 03301-4021
BK. 3172 PG. 1102

OPEN SPACE 7 DRAINAGE
EASEMENT LOT
MAP 392Z LOT 21
PARMENTER PLACE
23 GREEN STREET
CONCORD, N.H. 03301-4021
PARMENTER ROAD
CONCORD, N.H. 03301-4021
BK. 3172 PG. 1102

MAP 392Z LOT 1
DEOSS DISTER L REVOCABLE TRUST
DEOSS DISTER L JR TRUSTEE
PO BOX 658
CONCORD, N.H. 03302-0658
30-32 HUTCHINS STREET
CONCORD, N.H. 03302-0658
BK. 3562 PG. 930

MAP 392Z LOT 22
211,389 S.F.
4.853 Ac.

APPROVED
UNDER THE PROVISIONS OF R.S.A. 674.35 & R.S.A. 674.36
CITY PLANNING BOARD
CITY OF CONCORD, NEW HAMPSHIRE
IN ACCORDANCE WITH VOTE OF THE BOARD DATED:

APPROVAL OF THIS PLAN IS LIMITED TO THE LOTS AS SHOWN

CHAIR

CLERK

CONDOMINIUM SITE PLAN
PARMENTER PLACE PHASE II
MAP 392Z; LOT 22
15 PARMENTER ROAD
CONCORD, NEW HAMPSHIRE
MERRIMACK COUNTY

OWNER OF RECORD:
PARMENTER PLACE, A NH NON-PROFIT CORPORATION
23 GREEN STREET
CONCORD, N.H. 03301
M.C.R.D. BK. 3172 PG. 1090
M.C.R.D. BK. 3172 PG. 1102 (DECLARATION)

KMA
KEACH-NORDSTROM ASSOCIATES, INC.
Civil Engineering Land Surveying Landscape Architecture
5 Commerce Park North, Suite 201, Bedford, NH 03110 Phone (603) 627-2881

NOTES:

- THE PURPOSE OF THIS PLAN IS DECLARE THE UNITS IN PHASE 2 OF THE PARMENTER PLACE CONDOMINIUMS. THE UNITS BEING DECLARED IN PHASE 2 ARE UNITS 26-33.
- THE OVERALL CONDOMINIUM SITE LAYOUT CONSISTS OF 33 INDIVIDUAL UNITS (25 PHASE 1 AND 8 PHASE 2).
- ALL PROPOSED PHASE 2 UNITS ARE "NOT YET BEGUN".
- THE PROPERTY SHOWN HEREON IS THE SAME PROPERTY AS DESCRIBED IN THE DEED INTO PARMENTER PLACE (3172/1102).

UNIT DESCRIPTION:

- PHASE 1 = OLD CONSTRUCTION (UNITS 1 THROUGH 25)
- PHASE 2 = NEW CONSTRUCTION (UNITS 26 THROUGH 33)
- C = COMMON

CERTIFICATIONS:

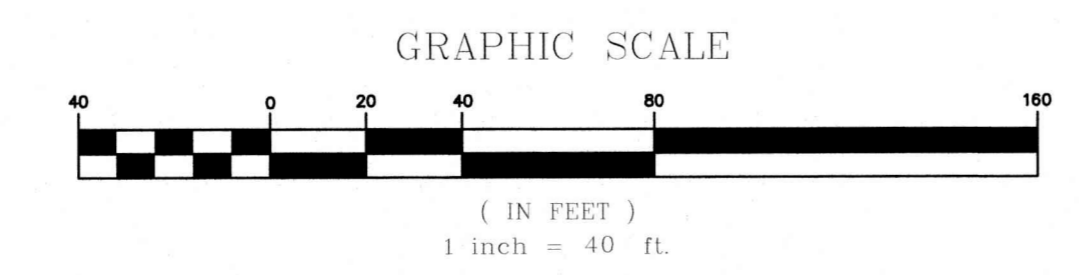
I HEREBY CERTIFY THAT THIS PLAN IS ACCURATE; THAT IT COMPLIES WITH THE PROVISIONS OF NEW HAMPSHIRE RSA 356-B:20, I & V AND PHASE 1 UNITS ARE "SUBSTANTIALLY COMPLETE" AND PHASE 2 UNITS ARE "NOT YET BEGUN".

I HEREBY CERTIFY THAT THIS PLAN WAS PREPARED BY ME OR THOSE UNDER MY DIRECT SUPERVISION. FURTHER, THAT THIS PLAN IS BASED ON AN ACTUAL FIELD SURVEY MADE BY THIS OFFICE DURING MARCH OF 2025. SAID SURVEY HAS A RELATIVE ERROR OF CLOSURE OF ONE PART IN TEN THOUSAND (1:10,000) OR BETTER.

3/18/26
LICENSED LAND SURVEYOR DATE

OWNER OF LOT 22

SIGNATURE: *Julia Poljan*
CONCORD HOUSING AND REDEVELOPMENT AUTHORITY
DATE: 3/18/26



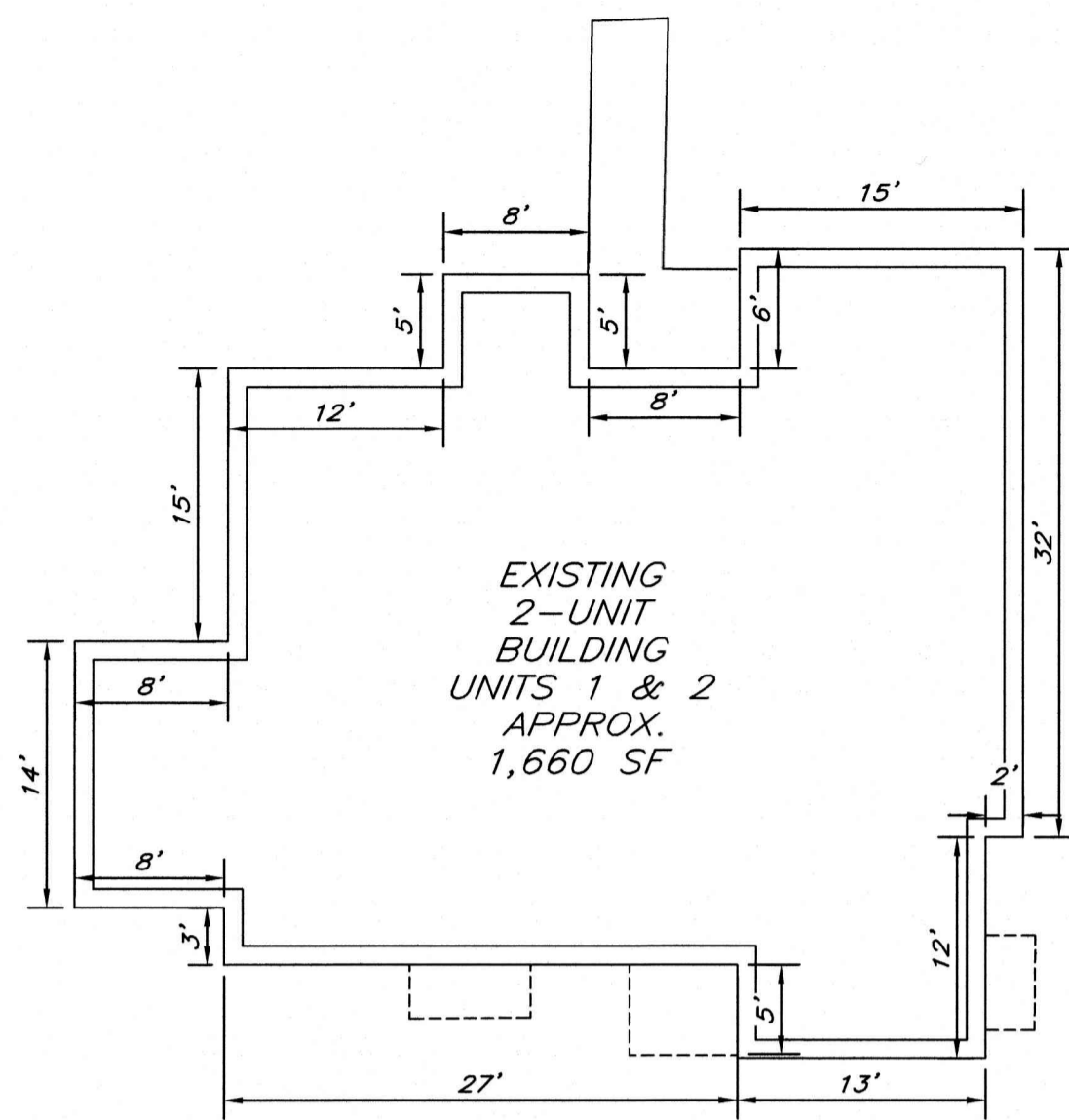
- LEGEND**
- ⊙ DH-F DRILL HOLE FOUND
 - ABUTTER LINE
 - PROPERTY LINE
 - EDGE OF PAVEMENT
 - VERTICAL GRANITE CURB
 - STONEWALL
 - PROPOSED EDGE OF PAVEMENT
 - PROPOSED VERTICAL GRANITE CURB
 - PROPOSED RETAINING WALL
 - ZONE LINE
 - UNIT NOT YET BEGUN



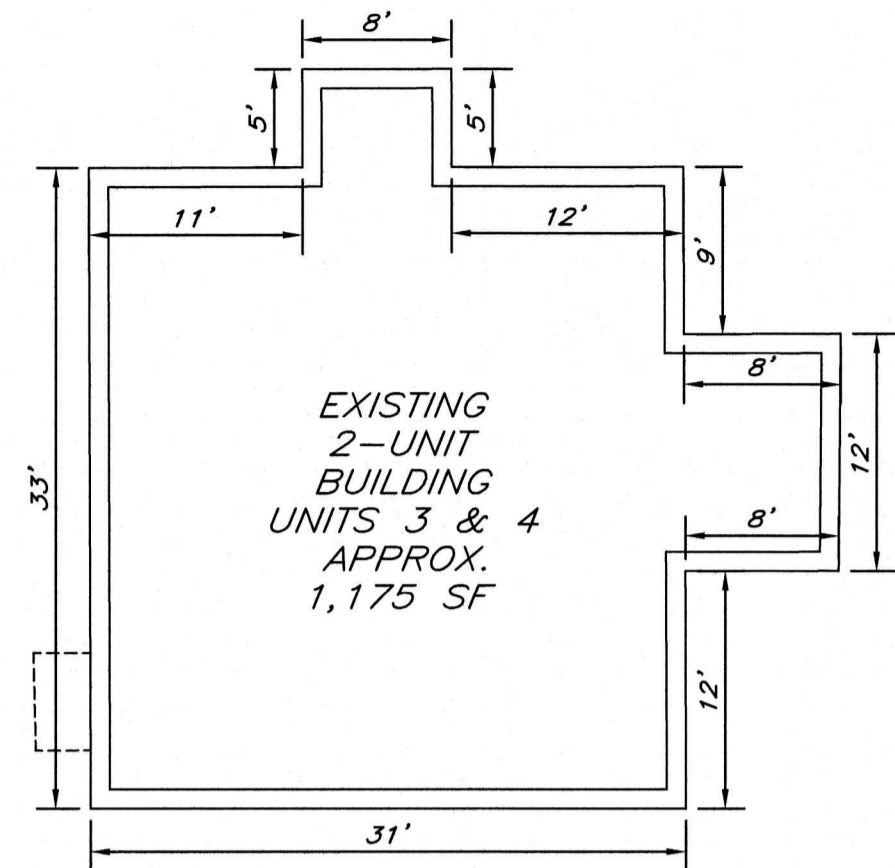
MAP 39Z LOT 19
DEOSS DISTER L REVOCABLE TRUST
DEOSS DISTER L JR TRUSTEE
PO BOX 658
CONCORD, N.H. 03302-0658
HUTCHINS STREET
CONCORD, N.H. 03302-0658
BK. 3562 PG. 930

MAP 392Z LOT 21
PARMENTER PLACE
23 GREEN STREET
CONCORD, N.H. 03301-4021
PARMENTER ROAD
CONCORD, N.H. 03301-4021
BK. 3172 PG. 1102

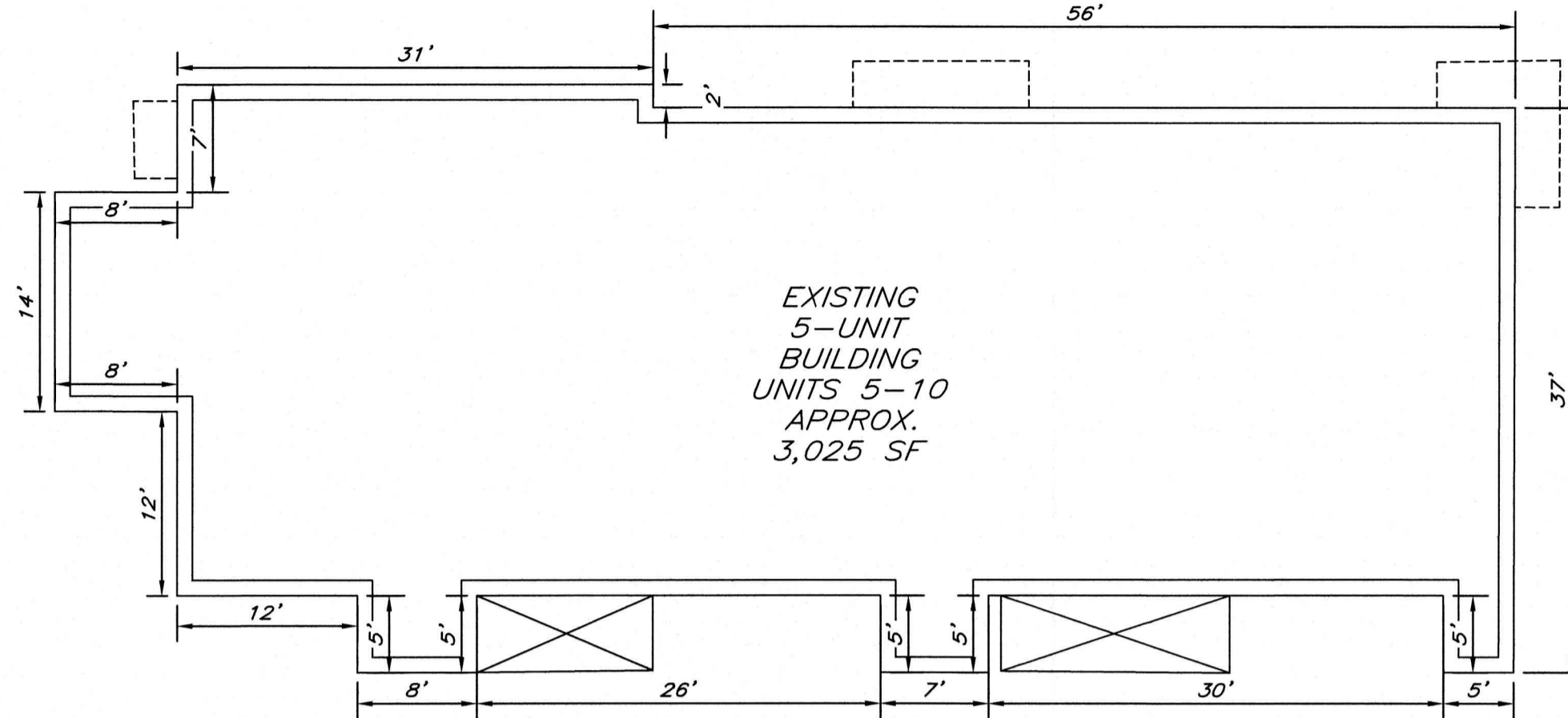
MAP 392Z LOT 1
DEOSS DISTER L REVOCABLE TRUST
DEOSS DISTER L JR TRUSTEE
PO BOX 658
CONCORD, N.H. 03302-0658
30-32 HUTCHINS STREET
CONCORD, N.H. 03302-0658
BK. 3562 PG. 930



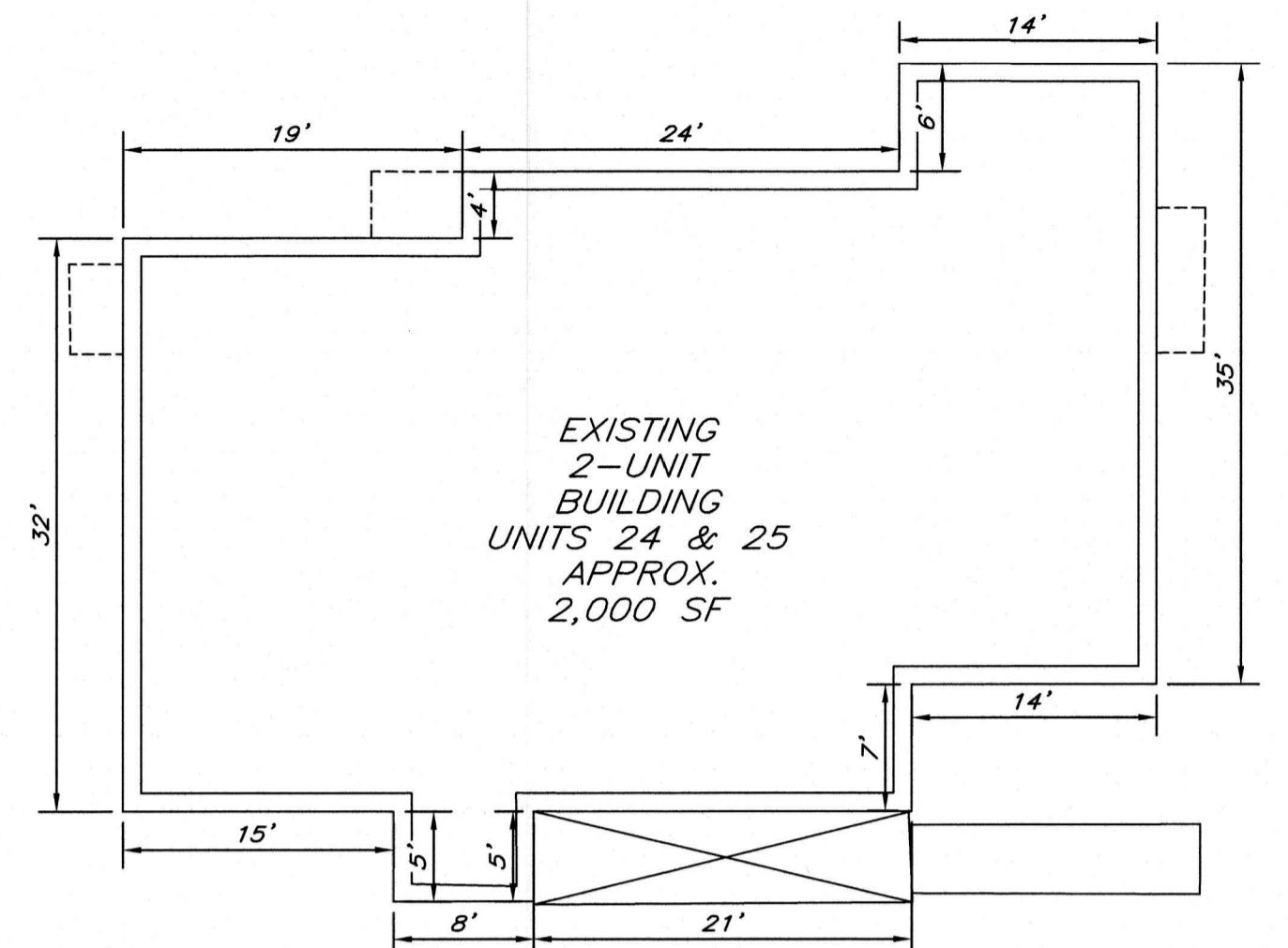
UNITS 1 & 2
SCALE: 1" = 10'



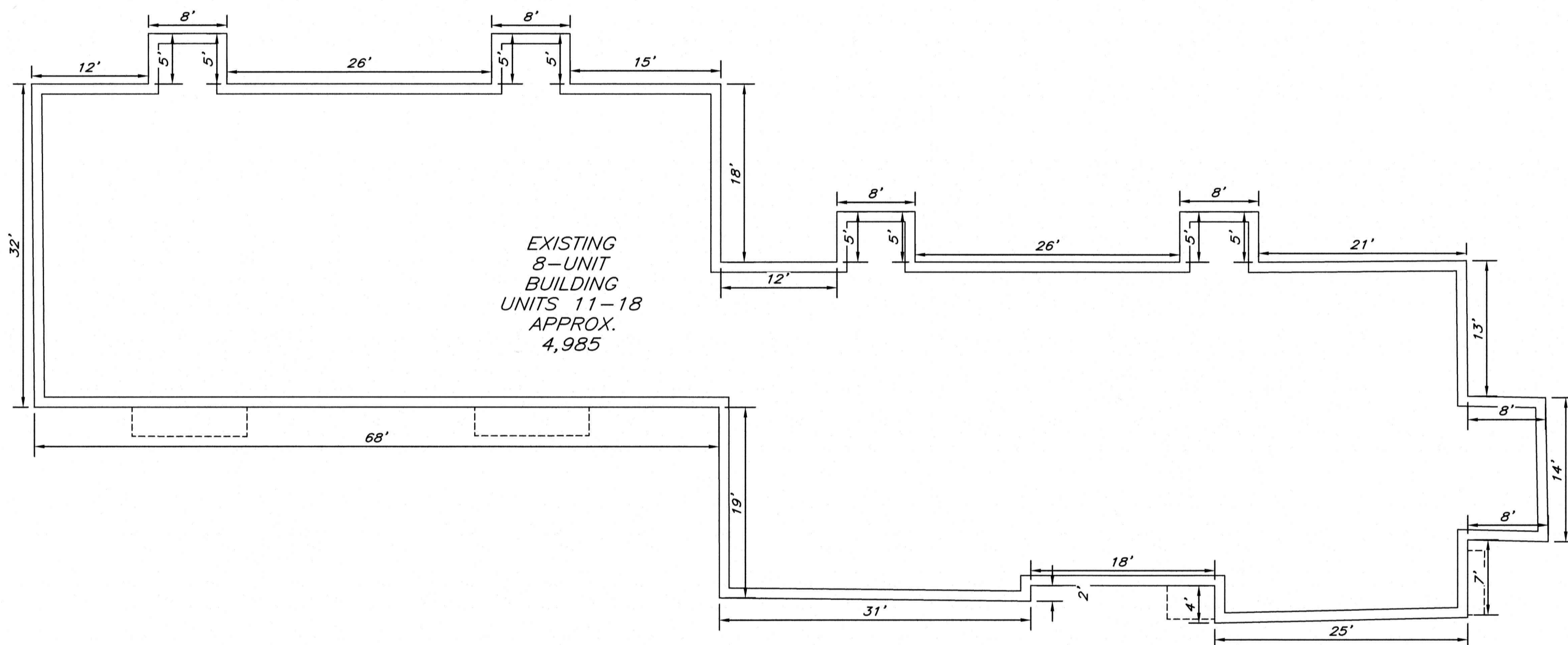
UNITS 3 & 4
SCALE: 1" = 10'



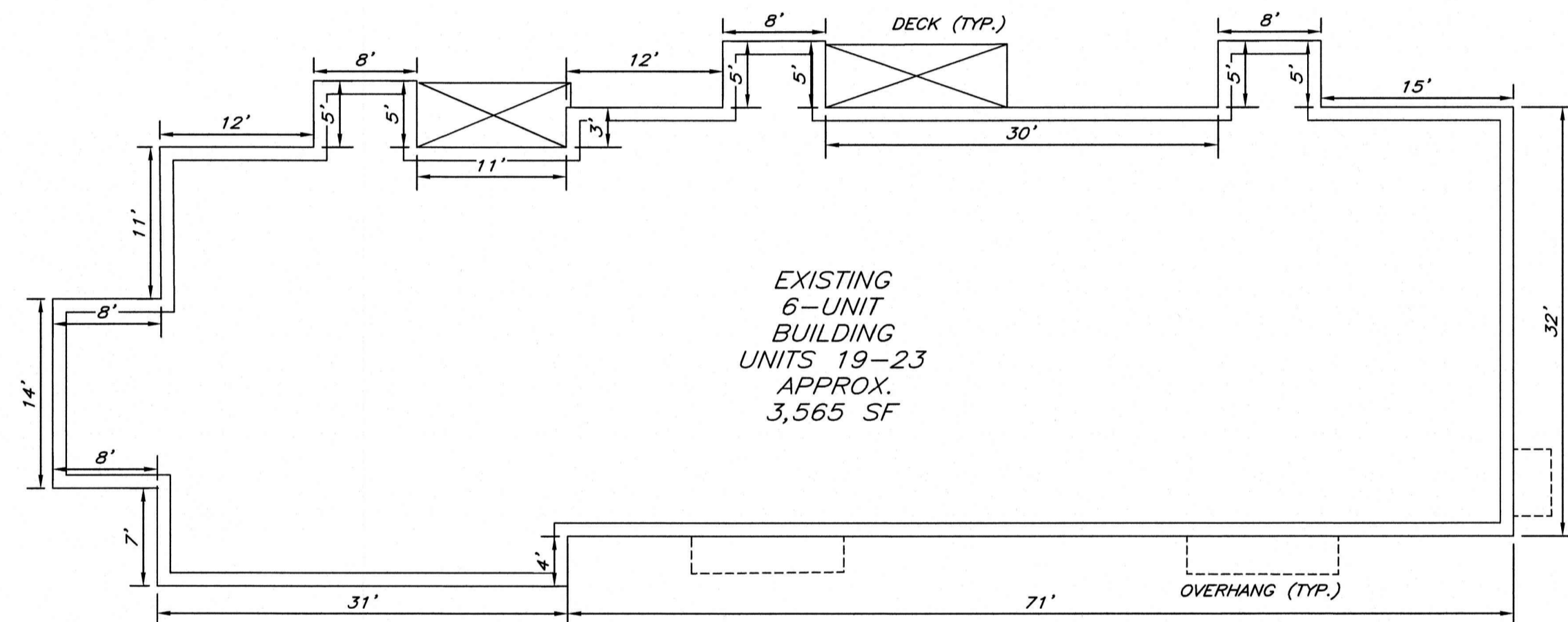
UNITS 5-10
SCALE: 1" = 10'



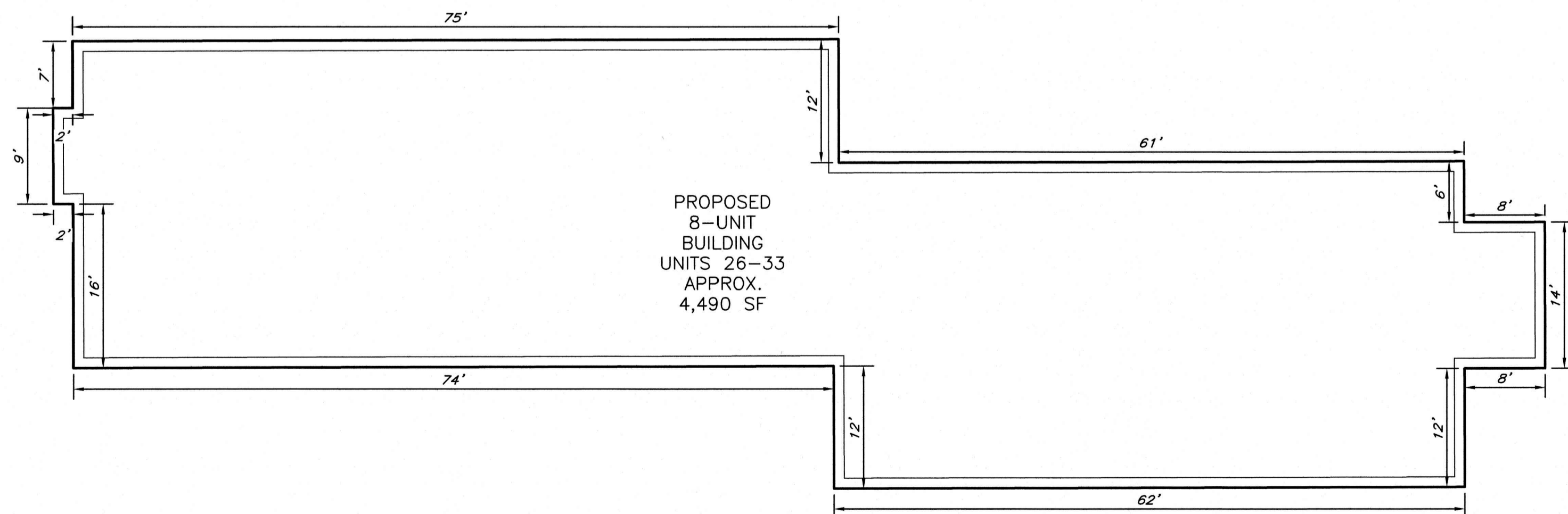
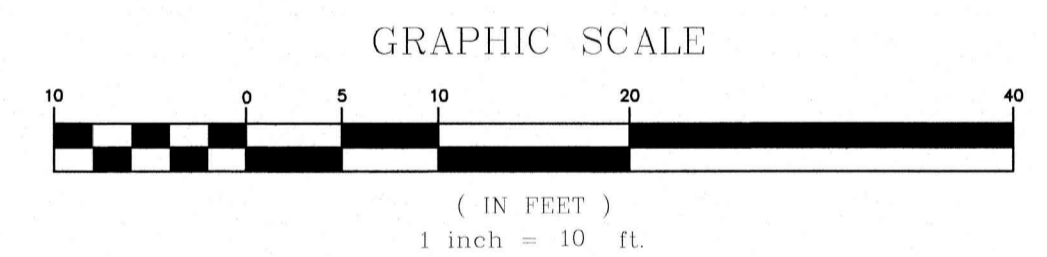
UNITS 24 & 25
SCALE: 1" = 10'



UNITS 11-18
SCALE: 1" = 10'



UNITS 19-23
SCALE: 1" = 10'



UNITS 26-33
SCALE: 1" = 10'

APPROVED
UNDER THE PROVISIONS OF R.S.A. 674.35 & R.S.A. 674.36
CITY PLANNING BOARD
CITY OF CONCORD, NEW HAMPSHIRE
IN ACCORDANCE WITH VOTE OF THE BOARD DATED:
APPROVAL OF THIS PLAN IS LIMITED TO THE LOTS AS SHOWN

CHAIR

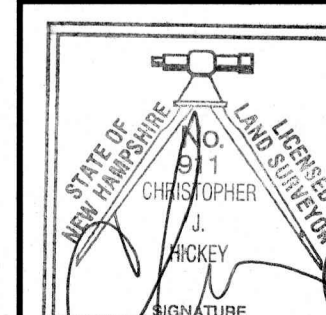
CLERK

**BUILDING DIMENSIONAL PLAN
PARMENTER PLACE PHASE II**

MAP 392Z; LOT 22
15 PARMENTER ROAD
CONCORD, NEW HAMPSHIRE
MERRIMACK COUNTY

OWNER OF RECORD:
PARMENTER PLACE, A NH NON-PROFIT CORPORATION
23 GREEN STREET
CONCORD, N.H. 03301
M.C.R.D. BK. 3172 PG. 1090
M.C.R.D. BK. 3172 PG. 1102 (DECLARATION)

KM KEACH-NORDSTROM ASSOCIATES, INC.
Civil Engineering Land Surveying Landscape Architecture
5 Commerce Park North, Suite 201, Bedford, NH 03110 Phone (603) 627-2881



REVISIONS			
No.	DATE	DESCRIPTION	BY

DATE: MARCH 18, 2026 SCALE: 1" = 10'
PROJECT NO: 06-0505-1 SHEET 2 OF 2