

A photograph of a snowy forest scene. In the background, a snow groomer is visible, working on a snowy slope. The trees are heavily covered in snow, and the ground is a smooth, white expanse. The overall tone is cold and wintry.

Ski the Beav

Working to Make Local Skiing Better and Available to All

What have we done so far?

2019-2022

- Raised funds to assist the city in the purchase of a new groomer
- Located a high-quality used groomer, and helped facilitate its purchase

2023

- Incorporated as a 501c3 non-profit
- Refocused on snowmaking: met with HKD, Horizons Engineering, and multiple others to discuss feasibility of snowmaking at Beaver Meadow
- Purchased a utility trailer full of skis, boots and poles, from Manchester Moves in order to make skiing more broadly accessible

2024

- Arranged to demo a snowgun at Beaver Meadow, and presented this idea to the public at RPAC, before being thwarted by warm weather

What's next?

2024

- Collaborate with City Staff and the various committees (RPAC and Golf Course advisory) to develop a scope for a basic snowmaking setup
- Work with the city to run a snowmaking demo early in the winter of 2024-2025, to help inform abutters

2025

- With the consent of the city and the community, begin fundraising to pay for the cost of a snowmaking



WATER



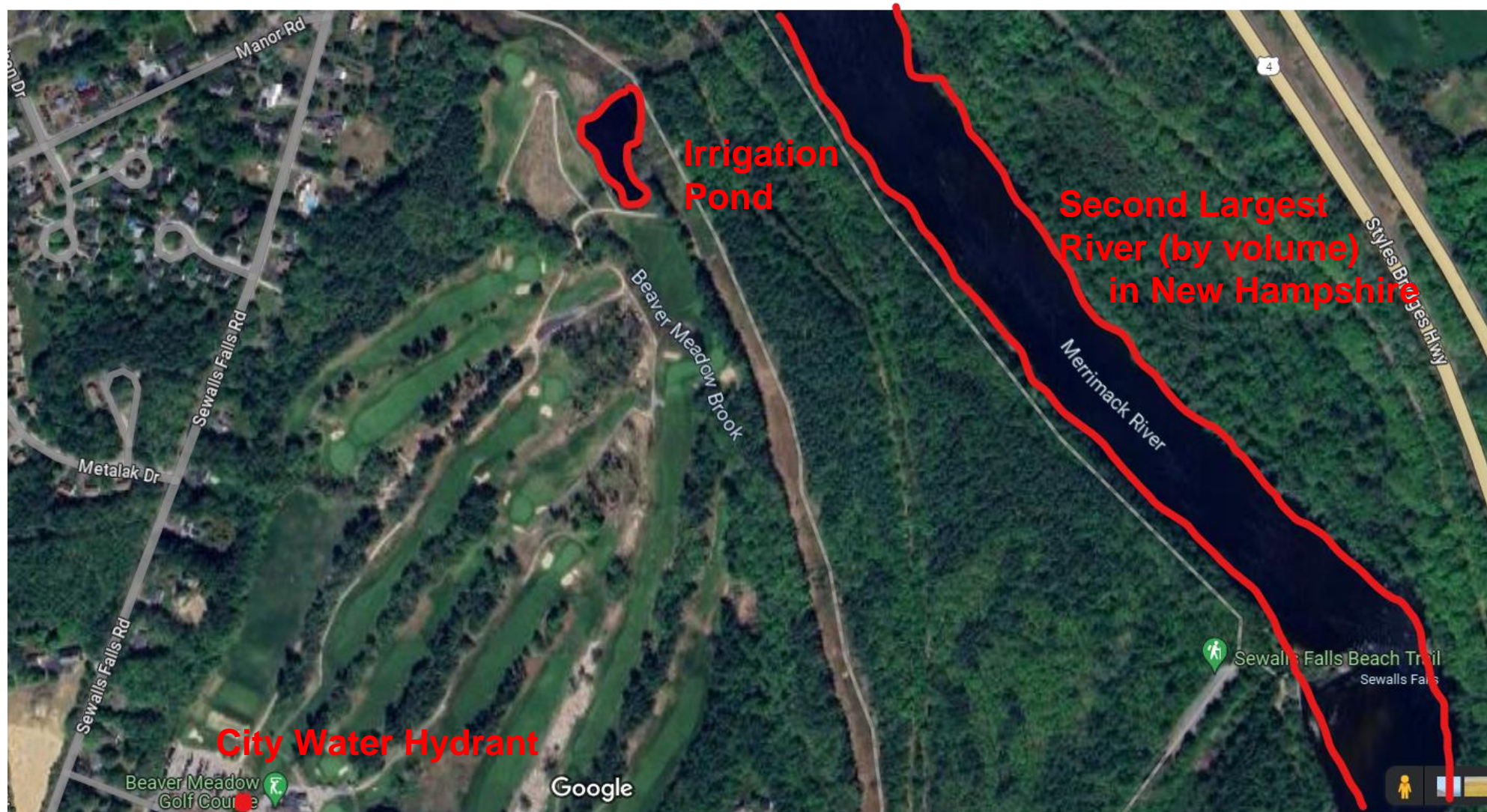
POWER



CAPITAL

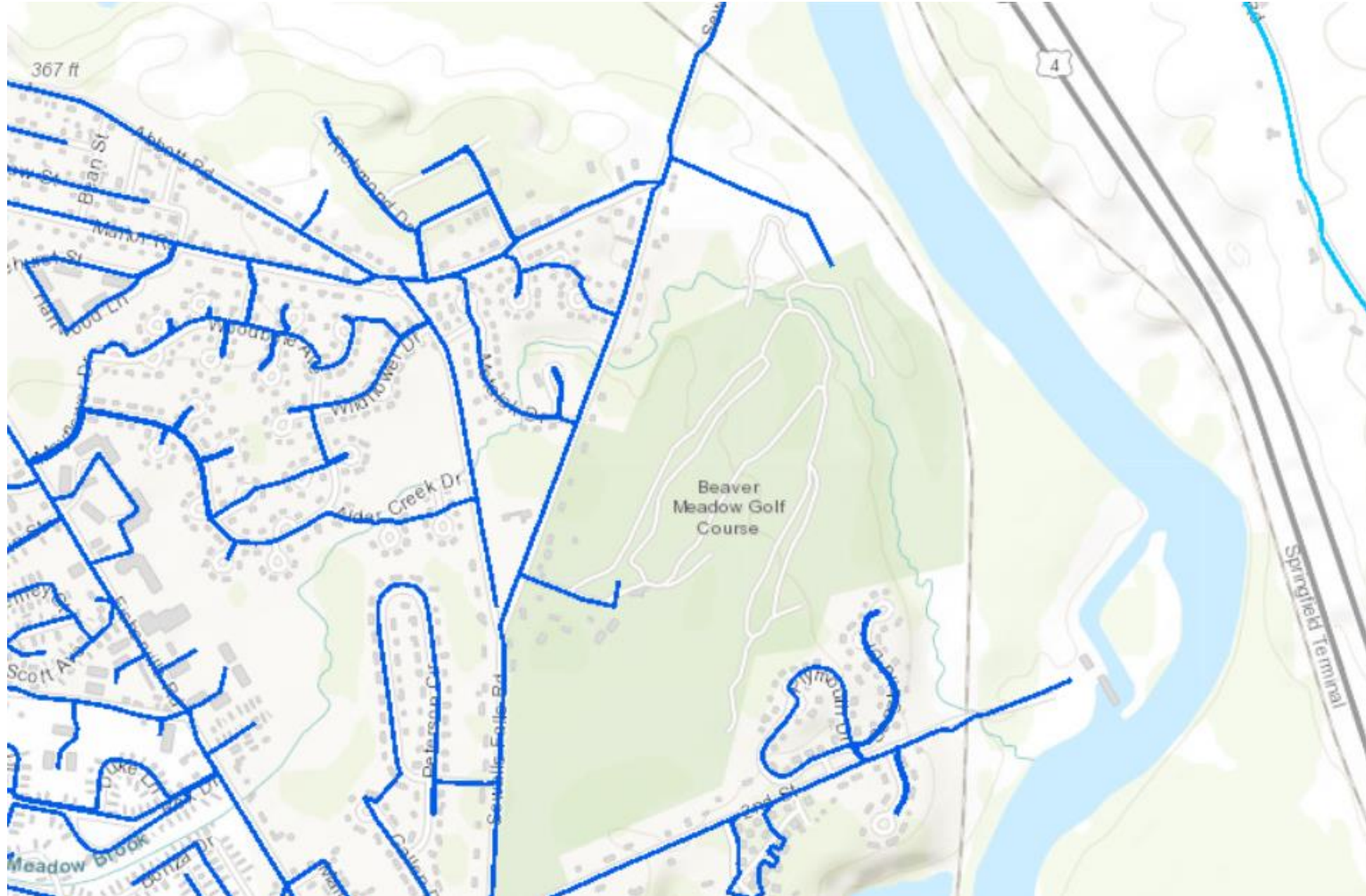
WATER SOURCE

1 KM * 21 Feet Wide * 2 Feet Deep = 630,000 Gallons of Water



POWER SOURCE

- Energy usage – 30 ski areas:
 - Large variation: 1 - 14 kWh_{el}/m³_{sno}
 - 3.5 – 4.3 kWh_{electricity}/m³_{snow} (median – mean value)

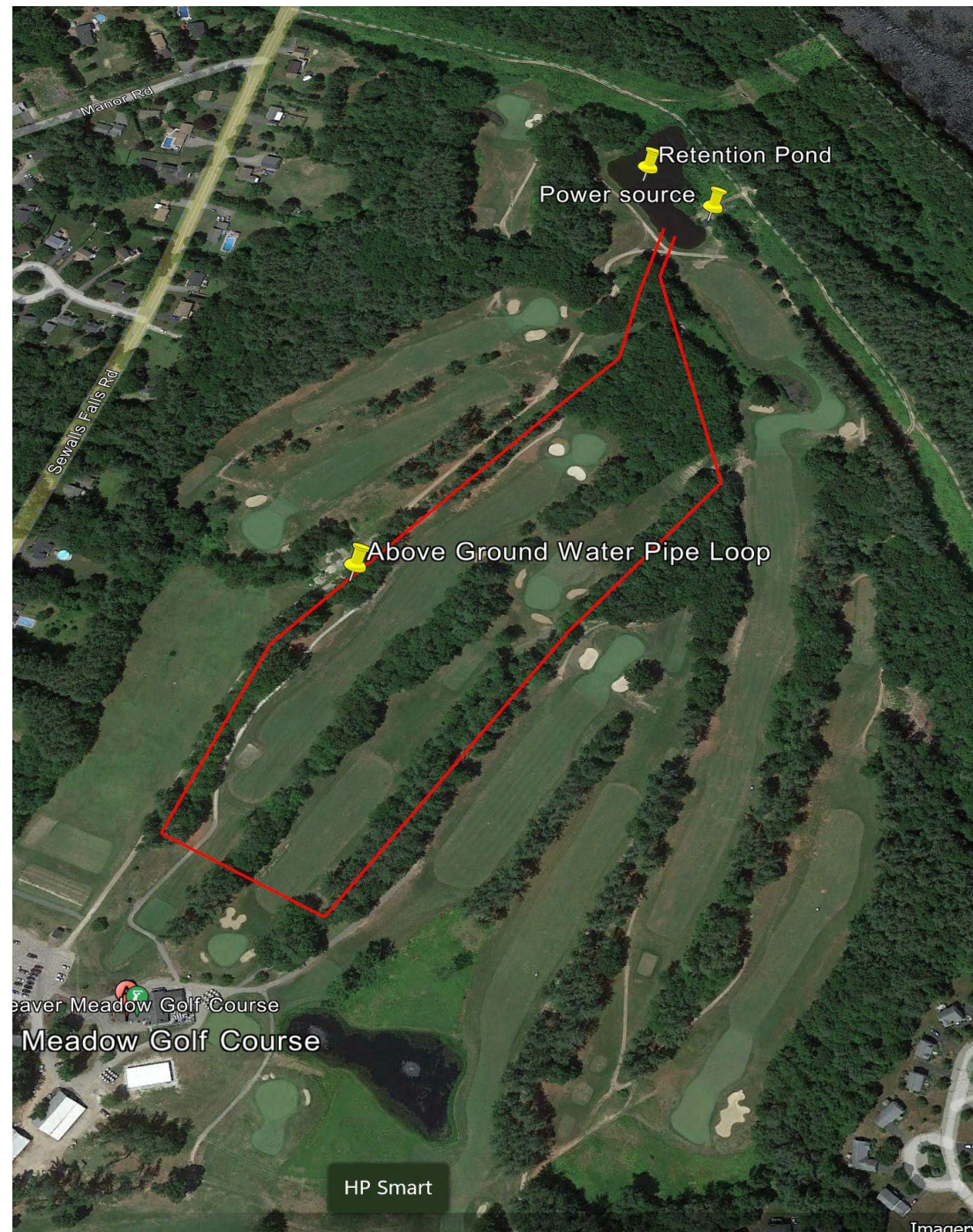


POWER SOURCE



The newly designed HKD Super Blizzard is a self-contained portable snowmaking system that's capable of making snow anywhere; all that's required is a water source. The production capacity reaches 200 gallons per minute with projection exceeding 225 feet. The Super Blizzard is perfect for Nordic Centers and other venues where a traditional snowmaking system is not available.

A Potential Snowmaking Setup?



REVENUE SOURCE

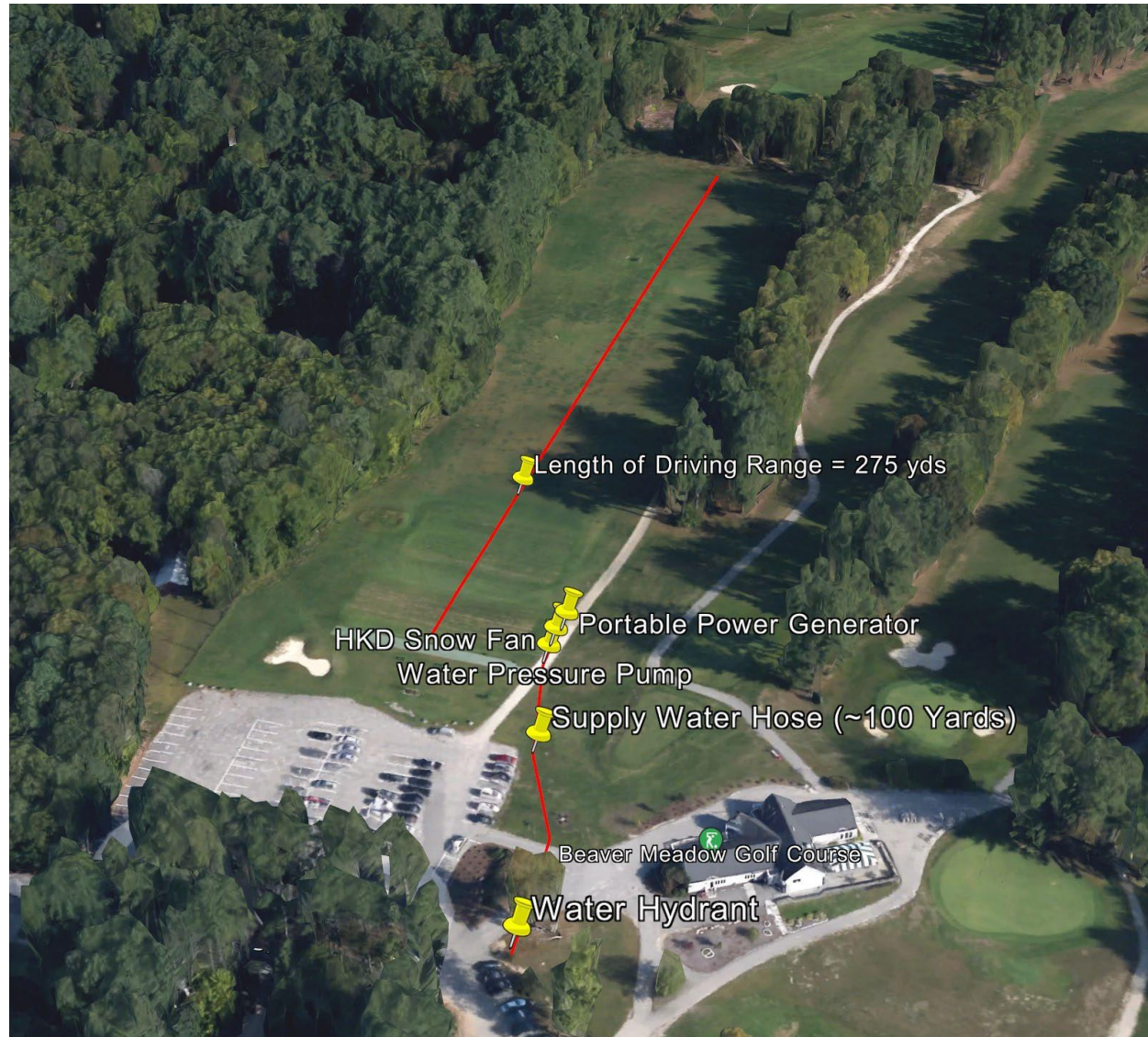
Capital Costs

These figures are extremely rough, and until we are able to work with the city to further refine the scope of the project and its operational profile, its difficult to know exactly what the costs will be.

SkiTheBeav exists to fundraise to defray as much of these costs as is possible!

Snowmaking Equipment	
Supply Pump	\$ 1,000
Manifold and Hose	\$ 7,500
Fan Gun w/ pump + compressor	\$ 45,000
NH Saves Rebate	\$ (20,000)
Pipe	\$ 25,000
Pond and Pumphouse	
Sediment catchment Basin	\$ 50,000
Pond Enlargement	\$ 70,000
Wet Well	\$ 20,000
Supply Pump	\$ 20,000
Power Supply	
480 V Deisel Generator	\$ 4,500
Undergrounding 480V Power	\$ 40,250
Contingency - 15% Cost Overrun	
High end	\$ 27,450
Low End	\$ 38,663
Low End	\$210,450
High End	\$296,413

Snowmaking Demonstration Overview



What Does SkiTheBeav Need?

1. Collaboration from City Staff to successfully carry out a snowmaking demonstration early in the winter of 2024-2025.
2. Collaboration from City Staff to develop and bring forward and scope of work for a low-cost snowmaking system that would be sufficient to cover a 1 mile / 1.6 kilometer loop, including identifying how to proceed in gathering engineering estimates for modifications to the irrigation pond.
3. Collaboration from City Staff, including identifying a staff point person, to develop a set of proposed operating budget including staffing for snow making, moving and grooming, staff to sell tickets, water, electricity, equipment maintenance, insurance and other costs.

Questions?

- Email: skithebeav603@gmail.com or sevansbr@gmail.com

Thank you!