



CITY OF CONCORD

REPORT TO THE MAYOR AND CITY COUNCIL

FROM: David Gill, Parks and Recreation Director

DATE: July 29, 2022

SUBJECT: Merrill Park Pond

Recommendation

Review and accept this report.

History

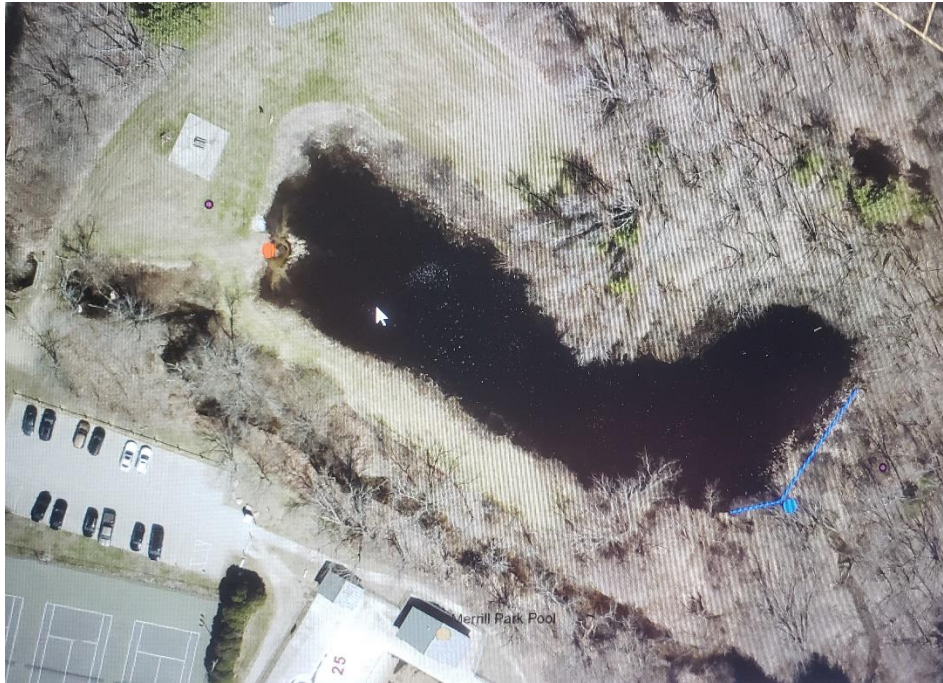
For generations the pond at Merrill Park has been a destination for the East Concord community. During the winter months the city maintained the pond for ice skating, spring the community enjoyed the annual Youth fishing derby sponsored by The Basil Woods Chapter of Trout Unlimited and during the summer kids would continue to fish in the pond and the community would enjoy picnics and watching the wildlife who rely on the pond.

The Merrill Park Pond earth dam was washed out during the Mother's Day floods of 2006. Since then pond only fills up during times of heavy rain or during the spring during snow melt and only holds water for a few days.

The pond was designed to have water come in from the stream on the western side of the pond (inlet) and on the eastern side of the pond was an outlet to allow water to flow out during times of heavy rain. The old the inlet on the western side still allows water to flow into the pond however is showing signs of failure. The pond is just less than an acre in size.

Since the Mother's Day floods, the pond is slowly growing in and during dry times has stagnant water for weeks at a time. Due to the uncertain water levels the city does not maintained the pond for ice skating anymore.

The Basil Woods Chapter of Trout Unlimited has continued to run their Youth Fishing Derby however the past couple of years the water level and condition around the pond has become problematic for the event.



The red dot on the left side of the pond is the inlet, the blue dot on right is outlet while the blue line is the location of the small earth dam.

Discussion

This spring we had an onsite meeting with members of the Basil Woods Chapter of Trout Unlimited to review their concerns and what may be needed to restore the pond. Everyone understood the City would need to bring in a company to help us review and understand the full scope of what is needed. Members of the Basil Woods Chapter offered to work with the city to review options for the pond.

By accepting this report, city staff will work on a scope of work and cost for a review of the Merrill Park Pond and will report back with the information.