

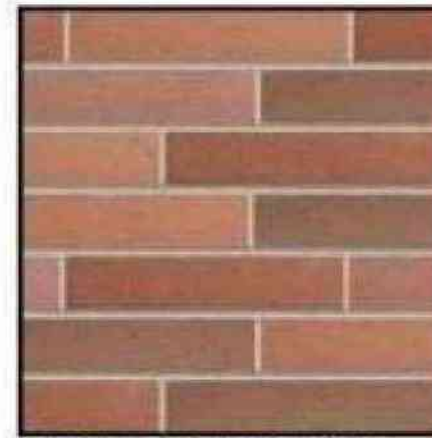
# MATERIAL FINISHES



Reclaimed Metal Panel:  
Vintage car hood occurs  
at face of the tower  
element only.



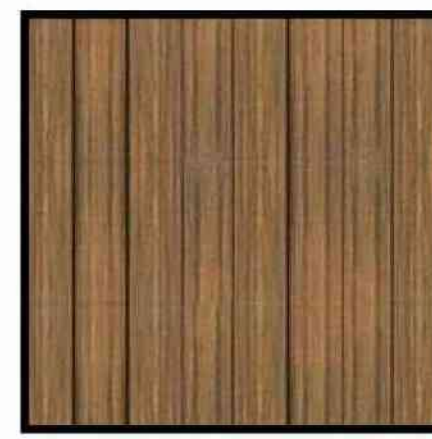
Aluminum storefront  
system.  
Finish: Anodized Black



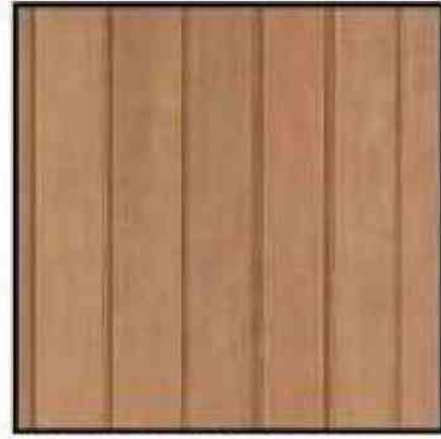
Belden Norman Brick  
Masonry Medium Range,  
smooth, iron spot. Mortar to  
match Solomon products  
10h, weathered horizontal  
strike. Vertical joints are  
flush.



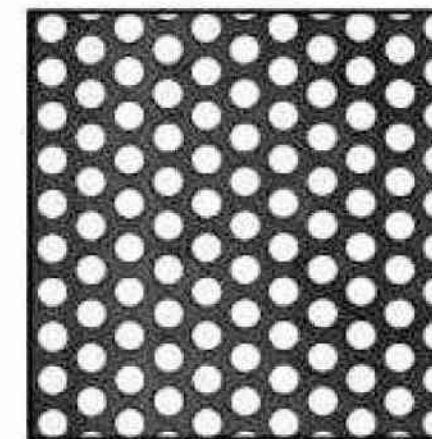
Standing Seam  
Metal Roof



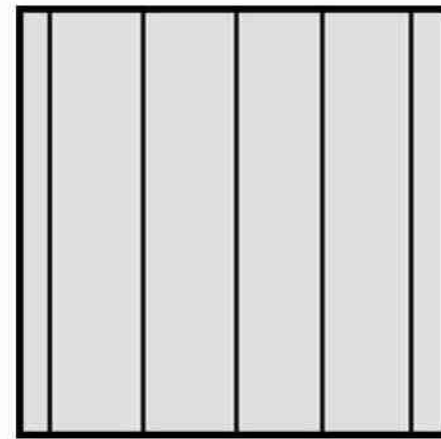
Composite Lumber Trex  
Cladding  
Color: Havana Gold



Panelized Fiber Cement  
Cladding  
Nichiha: Vintage Cedar



MCNICHOLS Perforated  
Metal Panel  
Powder Coat: Black



Freezer aluminum panel

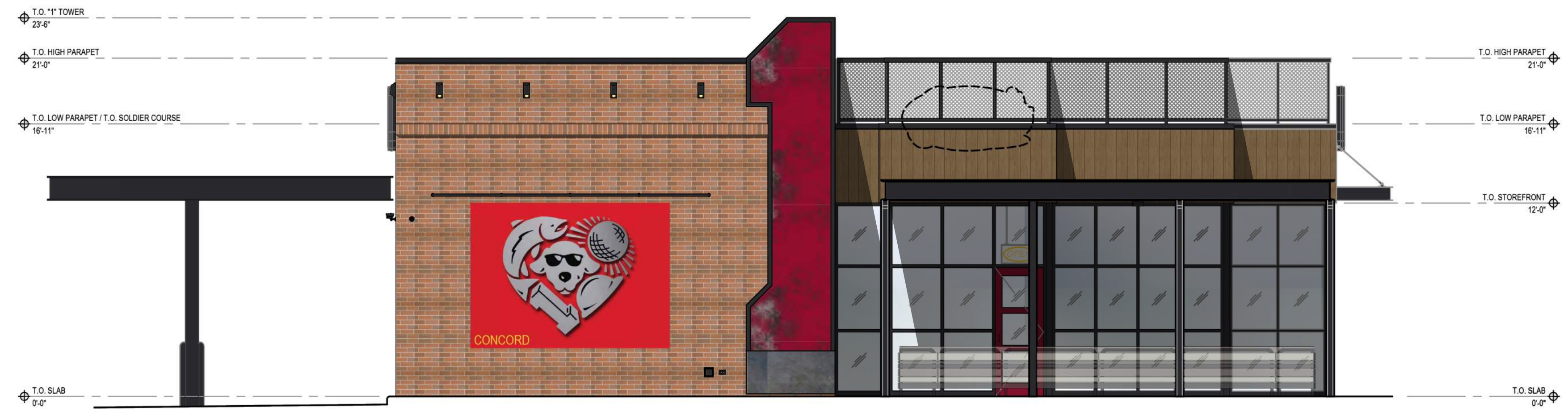


Boral: "Alamo" modular  
brick, mortar to match  
Solomon products 10h,  
light buff sack rub finish.



P-10: Super Spec 23  
Sherwin Williams Paint

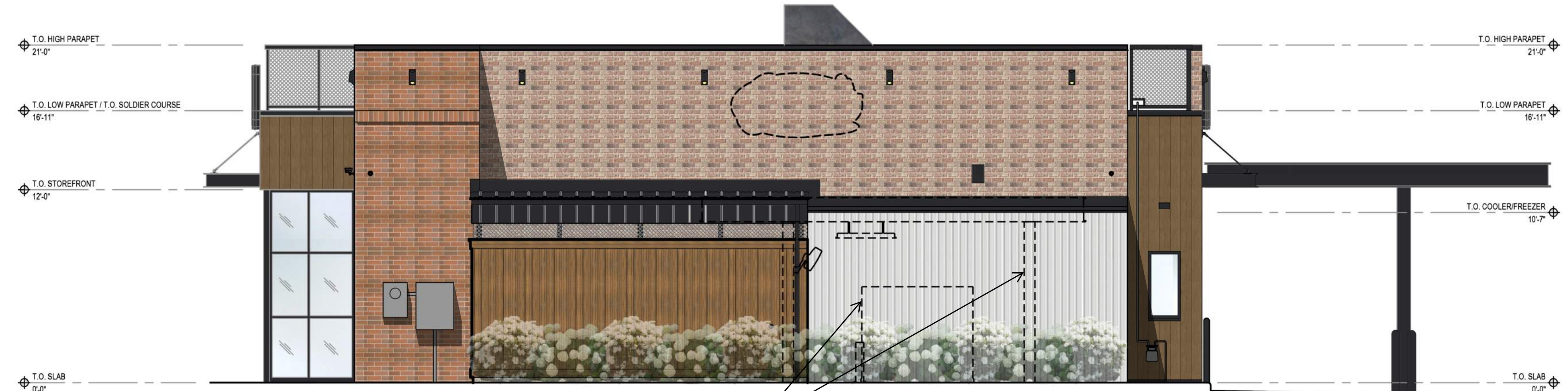
NOTE: SIGNAGE IS SHOWN DASHED FOR ILLUSTRATIVE PURPOSE. SIGNAGE UNDER SEPERATE CONTRACT.



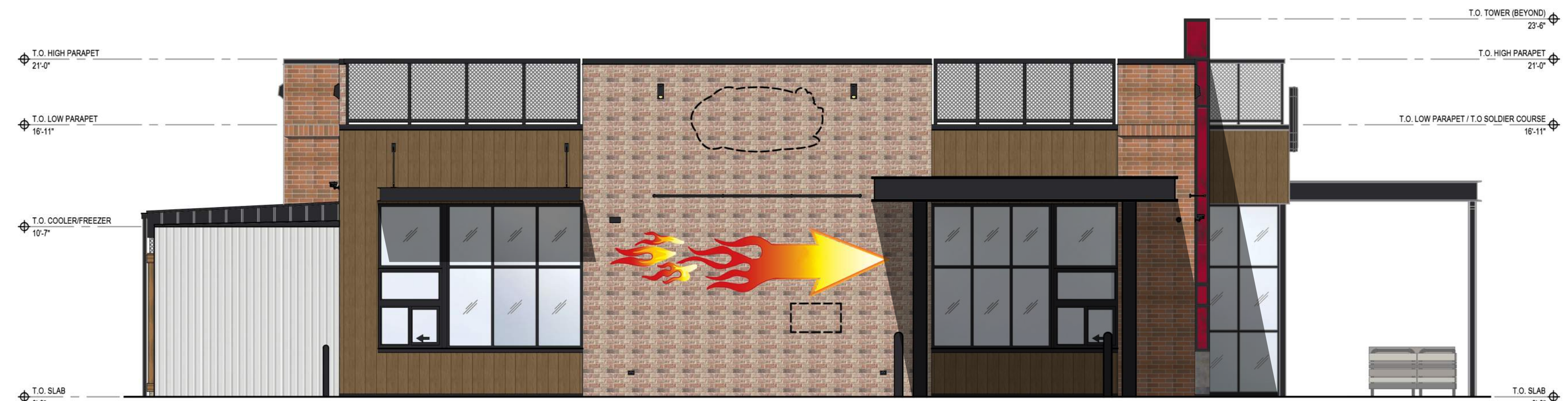
4 FRONT ENTRY ELEVATION (LOUDON RD.)  
EL-1 SCALE: 3/16" = 1'-0"



3 SIDE ELEVATION (EAST)- FACING ALDI  
EL-1 SCALE: 3/16" = 1'-0"



2 REAR ELEVATION (NORTH)- OLD LOUDON RD.)  
EL-1 SCALE: 3/16" = 1'-0"



1 DRIVE-THRU ELEVATION (WEST)  
EL-1 SCALE: 3/16" = 1'-0"



Restaurant Support Office  
6800 Bishop Road, Plano, TX 75024  
Tele: 972-769-3100 Fax: 972-769-3101

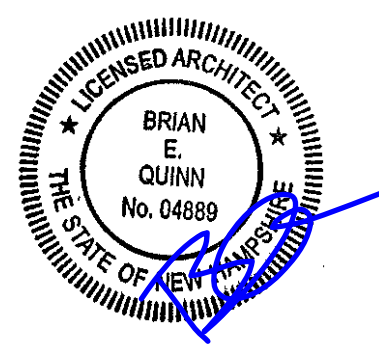
RAISING CANE'S  
RESTAURANT  
287 LOUDON ROAD  
CONCORD, NH 03301  
PROTOTYPE: P6-V-AV  
SCHEME: A  
RESTAURANT #RC1145



Lakewood, Ohio 44107  
17710 Detroit Avenue  
Phone (216) 521-5134  
Fax (216) 521-4824  
www.adaarchitects.com

THIS DOCUMENT CONTAINS INFORMATION  
PROPRIETARY TO ADA ARCHITECTS, INC.  
UNAUTHORIZED USE OF THESE DOCUMENTS IS  
EXPRESSLY PROHIBITED UNLESS AGREED UPON IN  
WRITING.

ENGINEER INFORMATION:



SHEET REVISIONS		
#	DATE	TYPE
1		
2		
3		
4		
5		
6		
7		
8		
9		
10		

EXTERIOR  
ELEVATIONS

DATE: 10/03/24

JOB NO. 23342

EL-1  
SHEET NO.