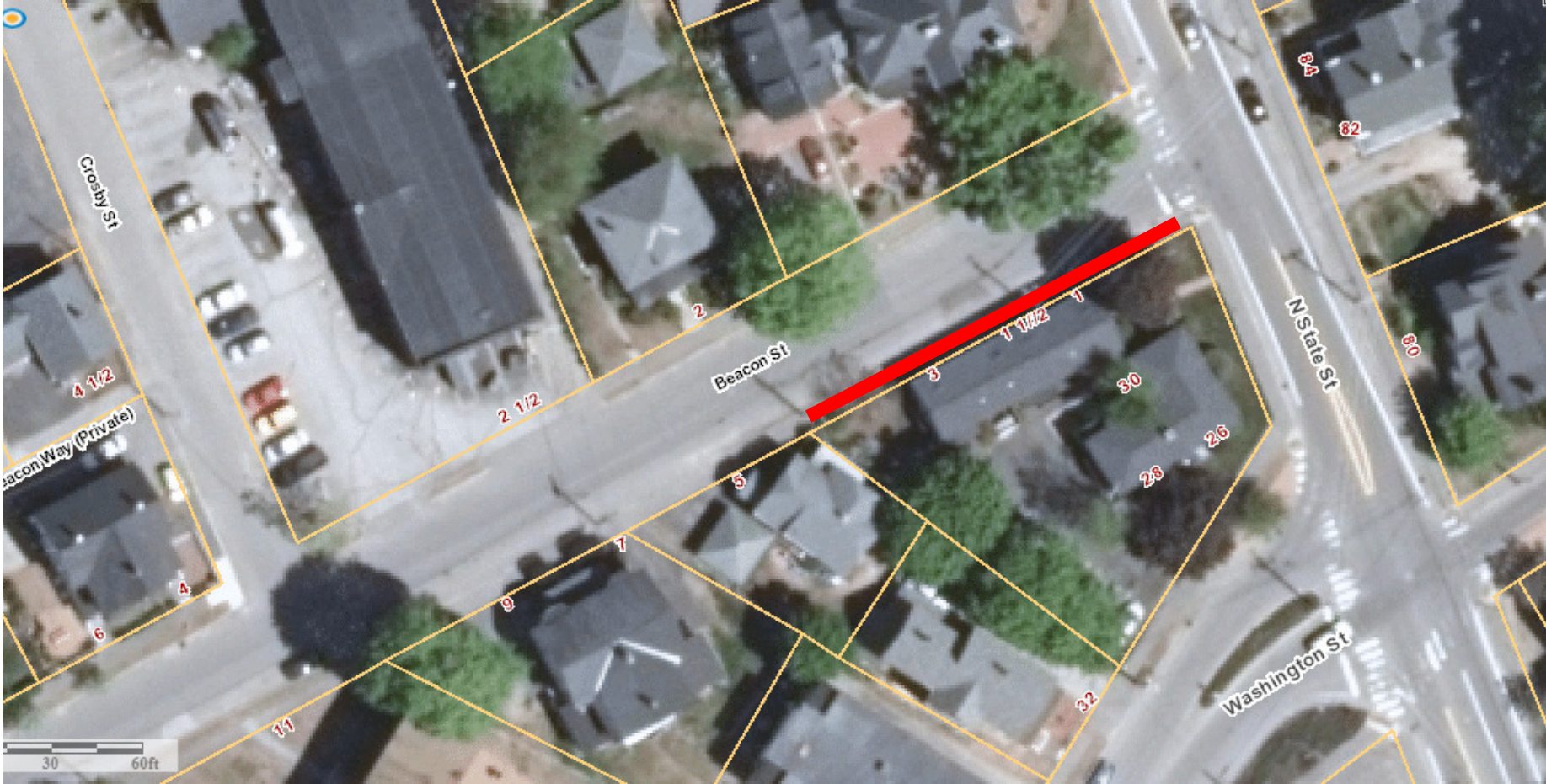


# Beacon Street

Request for Winter Parking Ban at 1-3 Beacon Street

Current Condition: 33+/-' Wide; Parking Both Sides



## Beacon Street

**Request for Winter Parking Ban at 1-3 Beacon Street**

**Current Condition: 33+/-' Wide; Parking Both Sides**



## Beacon Street

**Request for Winter Parking Ban at 1-3 Beacon Street**

**Current Condition: 33+/-' Wide; Parking Both Sides**



## Beacon Street

**Request for Winter Parking Ban at 1-3 Beacon Street**

**Current Condition: 33+/-' Wide; Parking Both Sides**

