

December 20,2023

To: Concord Mayor and City Council

Re: CAT (Concord Area Transit) Penacook Route

Dear Mayor and City Council,

I am asking to see if a "service modification" could be made to the Penacook Bus Route to provide a stop at Beaver Meadow Golf Course (1 Beaver Meadow Drive).

This would provide access to citizens that skate/ski and play golf that use public transportation.

CAT currently provides services to Penacook Family Physicians available on request to be dropped off by informing the driver. To be picked up, by calling CAT 603 225 1989.

Thank you,


Mark Coen

2 Thayer Pond Rd.

Concord NH 03301

Map Attached



Where will you go today?



SERVICE ALERTS!

[View Here!](#)

[Route Information](#)

[Services](#)

[Rider Resources](#)

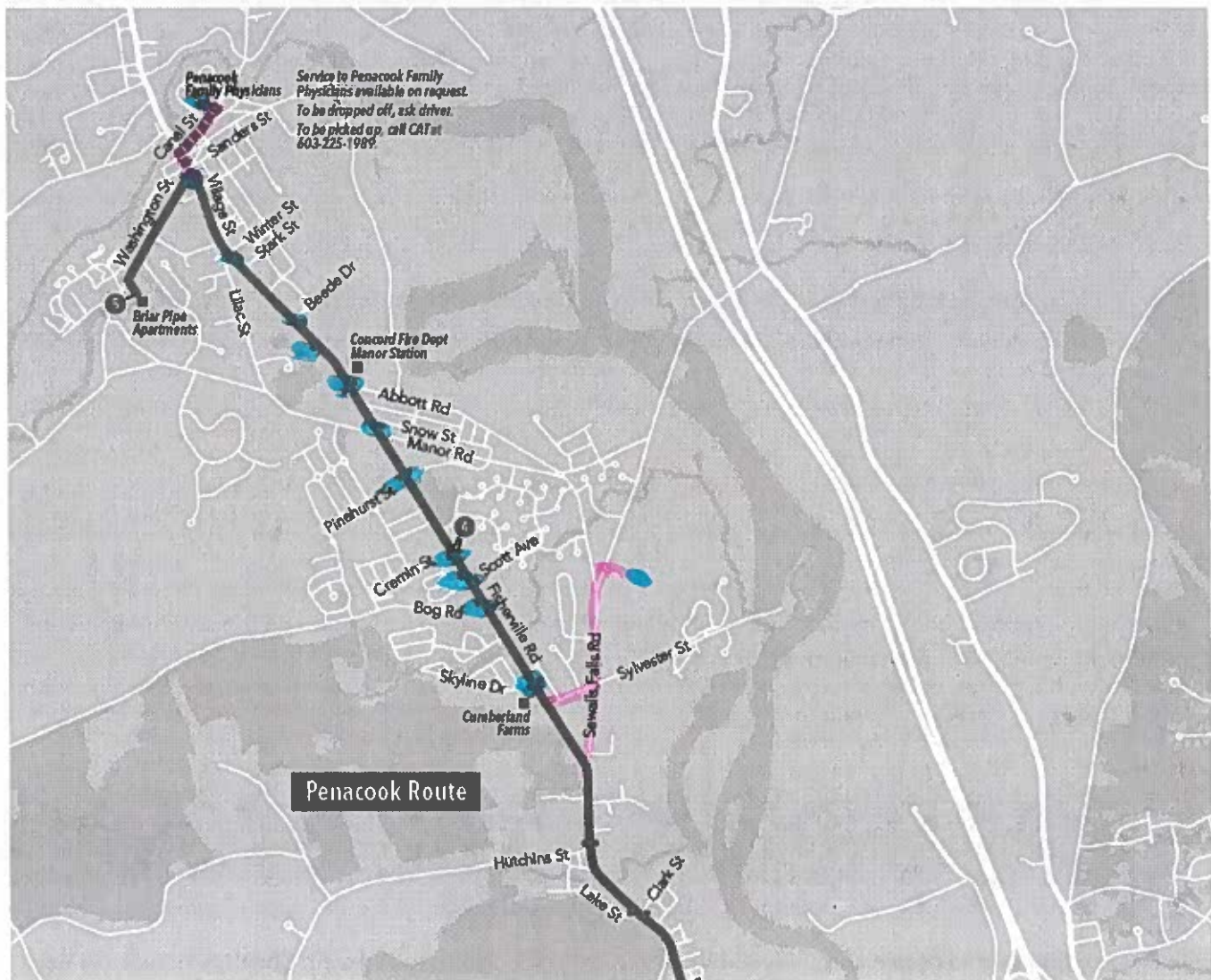
[News](#)

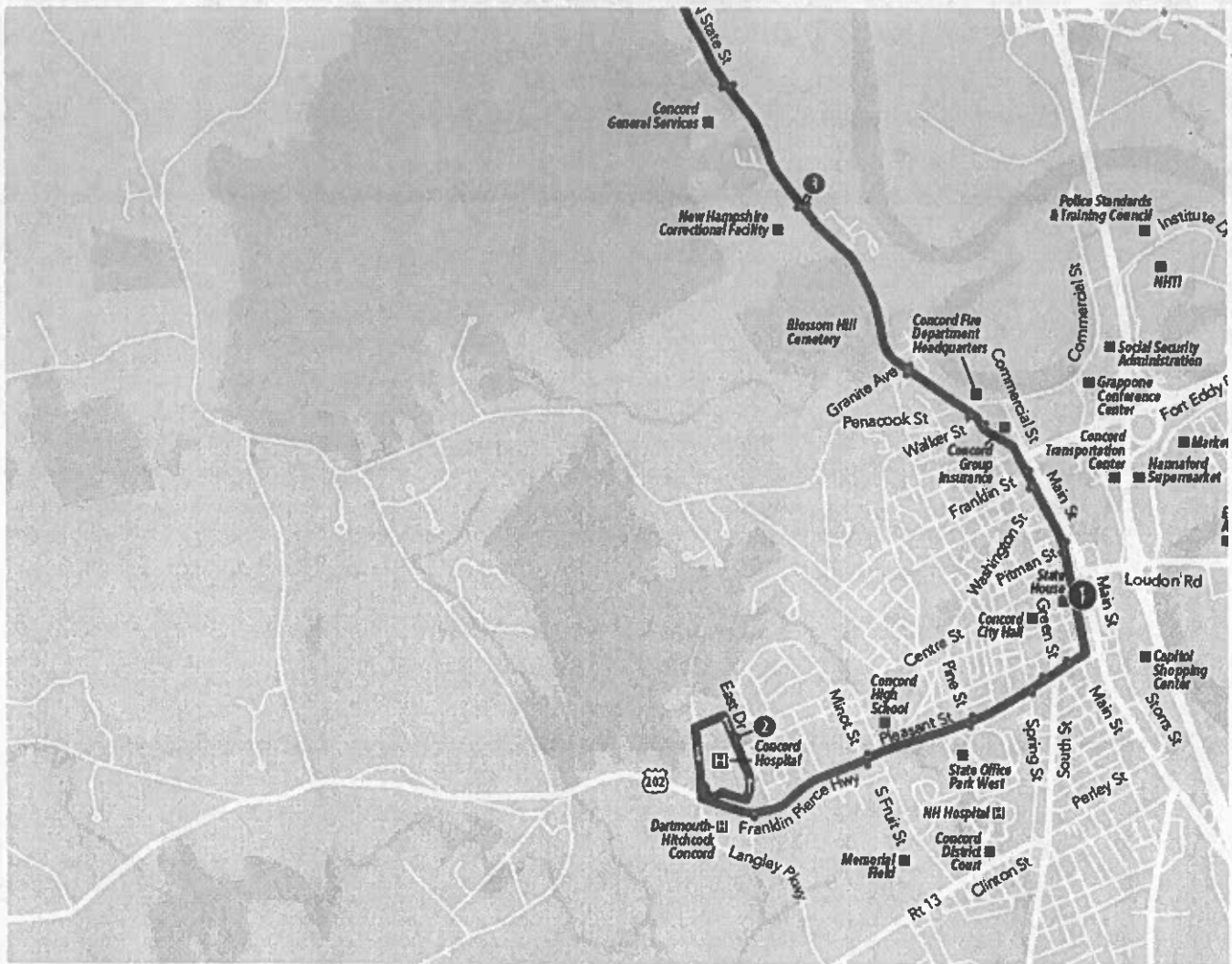
[About CAT](#)

[Contact Us](#)



Penacook Route Map & Schedule





Tips for using these schedules:

1. Find your starting point and destination on the map to determine what route will meet your needs.
2. The numbered circles (●) indicate locations with departure times shown on the schedule. Your bus stop may be between these schedule points, so use the schedule times to estimate the departure time from your stop.
3. Read the departure/arrival times from left to right across the schedule.
4. Transfers from one route to another may be made at the downtown transfer point (State House and Eagle Square stops).

Note that the routes operate as continuous loops, so at the end of each trip shown on the schedule, the bus continues as the next trip on the schedule.

» Click Here for a full map of all the CAT routes.

Penacook Route

Monday - Friday

Southbound to downtown →

← Northbound from downtown