



CITY OF CONCORD

REPORT TO THE MAYOR AND CITY COUNCIL

FROM: David Gill, Parks and Recreation Director
DATE: June 27, 2017
SUBJECT: Update on the design of Terrill Park (CIP 59)

Background

In the FY17 budget there was \$125,000 approved for the full design of Terrill Park. The park would include an artificial turf field with flood lights, new parking and other park improvements. VHB from Bedford NH was selected last winter to update the master plan for the park, coordinate the required permits and create the necessary design plans for construction. The FY18 CIP has construction beginning in FY19 and funded over three fiscal years for a total project cost of \$3,925,000.

Terrill Park is in an ideal location for an improved park as it is centrally located within Concord and has easy access from I93 and downtown Concord. The Park along with the new Greenway Trail and future improvements at Kiwanis Riverfront Park/Arena will be a wonderful recreation corridor for the entire community. This new recreation corridor will improve how we live, work and play.

Terrill Park encompasses 21 acres of land along the Merrimack River, mostly undeveloped and over all in poor condition. The park is the home of Concord's only Dog Park, has a walkway along the Merrimack River with great views of downtown Concord and the State House. The park has two parking areas, the old snow dump area is used for parking by the users during the spring, summer and fall, the upper parking lot is in very poor condition with partial pavement and reclaim. During the warmer months there are several picnic tables available for residents to enjoy along the walking trail.

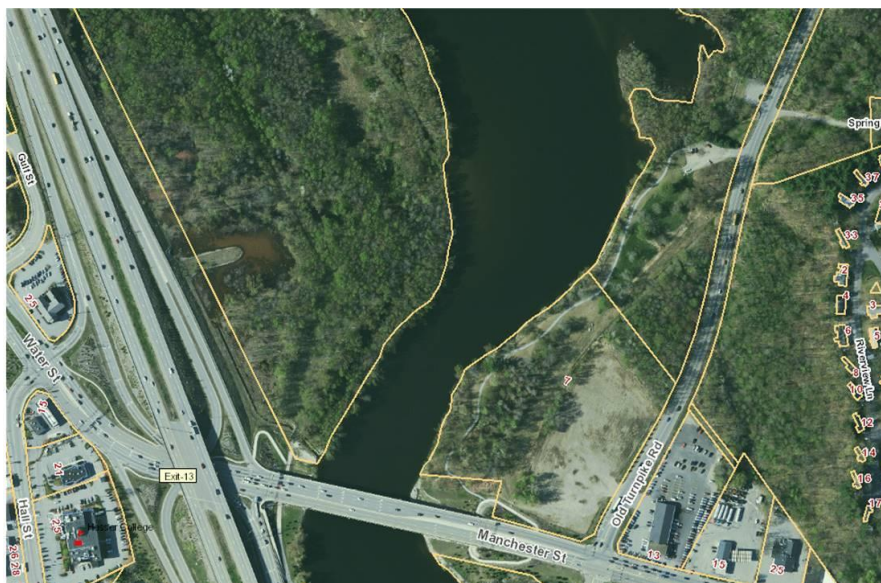
Working with VHB several goals were developed for Terrill Park:

- Create a plan that encourages all ages of the community to enjoy the park.
- Create our first artificial athletic field that is consistent with current and future needs of leagues.
- Develop a park that will be a "Gateway" to the new recreation corridor along the Merrimack River.
- Connect with the new Merrimack River Greenway Trail.
- Improve parking for park users.
- Be consistent with prior plans for the park (2005 and 2009).
- Improve the overall appearance and reputation of Terrill Park.

Update on the Merrimack River Greenway Trail.

At the December 14, 2015 City Council Meeting, the City Council appropriated the sum of \$200,000, including \$100,000 in grant funds from the Land and Water Conservation Fund (LWCF) and \$100,000 in private donations from the Friends of the Merrimack River Greenway Trail to be used for the design and construction of a portion of the Merrimack River Greenway Trail Project (CIP 543). LWCF projects in New Hampshire are administered by NH Department of Recreation and Economic Development (NHDRED). This portion of the project will stand alone as a recreational resource within Terrill Park as an accessible viewing platform of the Merrimack River, an inlet tributary, and downtown Concord. The platform will allow for nature and wildlife observation/education.

Since the appropriation, the project has been proceeding through the design and permitting process. The project consists of 100 feet of 11'-3" wide boardwalk with an observation bump-out and 160 feet of 10' wide paved path. The Preliminary Plans have been shared / reviewed with staff and final plans and specifications are underway. A pre-permit application coordination meeting was recently completed and permits should be submitted within the next month. Typical NHDES permit review time is about 75 days. The project is anticipated to be advertised for construction during the winter with construction occurring in 2018 and taking six to eight weeks to complete.



Close up of Terrill Park as it is today.

New Terrill Park Master Plan

VHB and the Parks and Recreation Department staff presented an update to the Parks and Recreation Advisory Committee at their February 2017 meeting (Attachment A). Several of the sport leagues were also at the meeting. Highlights of the new concept include the following park amenities:

- Multi-Purpose Artificial Athletic Field with flood lights
 - Support buildings (bathrooms, maintenance building and concessions area)
 - New larger Dog Park located near the middle parking lot
 - Two new parking lots, lower lot for 110 cars and middle lot 25 cars
 - Playground
 - Splash Pad
 - Workout stations along the river walk
- The new plan also incorporates the future double right turn lane from Old Turnpike Road onto Manchester Street (future CIP in Engineering Division)

The Parks and Recreation Advisory Committee voted to continue designing the plan as presented. The users at the meeting supported the addition of an artificial field in Concord as it will allow them to start practicing and even play games several months before the regular grass fields open, and later in the fall. Several leagues indicated they would like to see several multipurpose artificial athletic fields built in the community.

With the approval of the concept by RPAC, this spring VHB completed wet lands mapping and conducted soil drillings to ensure the site would be able to support the approved concept. The new park concept is below. RPAC again reviewed park plans at their July 2017 meeting and recommend moving forward with final design, permitting, finalize construction costs and develop annual operating of expenses. This fall VHB will be going back to the Parks and Recreation Advisory Committee to review the different artificial turf options that are available for the new field.



Discussion

As part of the work scope VHB has also developed preliminary cost estimates for the new concept for Terrill Park. We are currently recommending a two phase approach for the construction of the park. Please note as the plans continue to be developed over the next several months, the cost estimates will firm up. VHB working with staff will also help project annual operating costs of new park.

Phase 1: \$2.4 to \$2.9 million

Artificial Turf Field with lights (multi-sport field)

Fence around field with safety netting on each end

Maintenance/bathroom building

Press Box with score board

Bleachers for 140 spectators, room for additional portable bleaches

New 110 car parking lot

Relocated Dog Park within park

New middle parking lot for 25 cars

Phase 2: \$700,000 - \$1.3 million

Playground

Picnic Shelter

Splash Pad

Concession stand

Workout stations along the trail along the river

Over the next several months VHB along with staff will be presenting the plan for review and permitting with both the City and the State agencies. It is anticipated final design documents along with required permits will be finalized by spring 2018.



Aerial View of the new Terrill Park

Comments on new Terrill Park Plan from social media sites (From Feb 2017)

This screenshot shows a Facebook post from the Concord Parks and Rec Department. The post, published on February 17, 2017, at 8:33 AM, features a landscape rendering of the proposed Terrill Park plan. The text of the post reads: "Nice article in today's newspaper regarding our plans for Terrill Park. Thoughts????". Below the rendering, a headline states: "Plan for Terrill Park has lighted turf field, new dog park". The sub-headline describes the features: "A professional-size turf field, an enhanced dog park, a trail with workout stations and even a splash park. Those are some of the features included in...". The post has reached 4,785 people and includes a "Boost Post" button. The interaction bar shows "Like", "Comment", and "Share" options, with a notification that Jackie Smith, Sarah Brian Sartorelli, and 52 others have interacted. The page also displays a "People Also Like" section with various local organizations and a "Liked by This Page" section.

This screenshot shows a newspaper article from Concord Monitor titled "Proposed Master Plan". The article features a large landscape rendering of the park plan, similar to the one in the Facebook post. Below the rendering, it states: "Renderings made by the Bedford-based firm VHB show the proposed plan for Terrill Park. VHB—Rendering". The article is attributed to "By NICK REID, Monitor staff" and dated "Thursday, February 16, 2017". On the right side of the page, there is an "Editor's Picks" section with several article titles, including "Beyond the mosque: Portraits of a community" and "Threat of snow, cold can't keep Black Ice hockey fans away". At the bottom of the page, there is a Microsoft Cloud advertisement and a social media sharing bar with icons for Facebook, Twitter, Google+, and LinkedIn. The page number "372" is visible in the bottom left corner.

Visit Concord, NH

https://www.facebook.com/VisitConcordNH/?fref=pb&hc_location=profile_browser

Visit Concord, NH

Like Follow Share ...

Book Now Message

Heidi Horne wonderful place to visit!
Like Reply 1 · Yesterday at 7:30am

4.7 ★★★★★ · Always Open

Invite friends to like this Page

The Capital Region offers you enough things to do and see that you could spend a lifetime or weekend here.

Welcome to Concord, NH!

Be Concord!

6,649 Likes
Laura Atwell Whitney and 9 other friends like this

85 people have been here

About See All

49 S Main St, Ste 104
Concord, NH 03301
(603) 224-2508
Message Now
www.concordnhchamber.com/visitor_info...
Tour Guide Chat (Off)


Visit Concord, NH
@VisitConcordNH

Home

About
Posts
Likes
Photos
Services
Instagram
Reviews
Videos
Events
Pinterest

Create a Page

Gone to the dogs! Plan for Terrill Park has lighted turf field, new dog park



Plan for Terrill Park has lighted turf field, new dog park

A professional-size turf field, an enhanced dog park, a trail with workout stations and even a splash park. Those are some of the features included in a preliminary design of the reimagined Terrill Park, as approved by the Recreation and Parks...

CONCORDMONITOR.COM

Like Comment Share

122 Top Comments

31 shares

Write a comment...

Start | Visit Concord, NH - Mo... | Inbox - Microsoft Outlook | Untitled - Message (HTML) | 9:55 AM