



CITY OF CONCORD

REPORT TO THE MAYOR AND CITY COUNCIL

FROM: David Gill, Parks and Recreation Director

DATE: May 4, 2026

SUBJECT: Accept this report and schedule a public meeting at the June City Council meeting to accept \$10,000 to be used as match for the Land and Water Conservation Grant the city was awarded for the construction of the new Skate Park at Kiwanis Riverfront Park.

Recommendation:

Accept this report and schedule a public meeting at the June City Council.

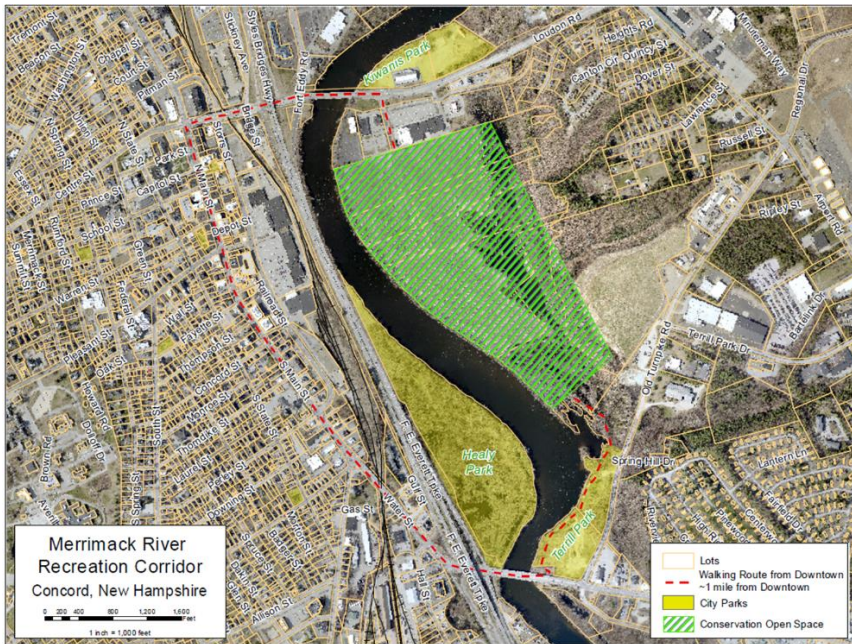
Discussion

In the FY23 budget there were funds approved in CIP#60 Kiwanis Park that read "Community Visioning Charrette to establish a master plan for Kiwanis Park, the Everett Arena, and City owned agricultural land between Terrill Park and Loudon Road (collectively referred to herein as the Merrimack River Recreation and Open Space Corridor). The goal of the process is to develop a comprehensive vision and strategy for these assets.

The CIP went on to say "Stakeholders include, but are not limited to, the public, Parks and Recreation Advisory Committee (RPAC), Arena Advisory Committee, Conservation Commission, City Council, Concord Crew, Friends of the Skate Park, Friends of the Merrimack River Greenway Trail, as well as staff representatives from applicable City Departments. From this process, a definitive Master Plan shall be developed and implemented for these properties."

What is the Merrimack River Recreation Corridor?

The Merrimack River Recreation Corridor is city owned land starting from the Loudon Road Bridge and Kiwanis Riverfront Park traveling south down to the Manchester Street Bridge.



This area includes City Parks at Healy, Terrill and Kiwanis, Conservation Land, Merrimack River Greenway Trail system and the Everett Ice Arena.

Terrill Park Master Plan

Phase 1 completed in 2021

- First Section of Greenway Trail.
- Moved Dog Park.
- New Parking lot near dog park and multi-use trail.

Built in partnership with City of Concord, FMRGT, private donors, Concord Rotary Club, Concord SPCA and a LWCF grant.

Phase 2 and 3 of the Park is listed in the City's Capital Improvement Plan and the park is fully designed and permitted.





Conservation Land

114 acres managed as open space with approximately 57 acres leased for agricultural use.

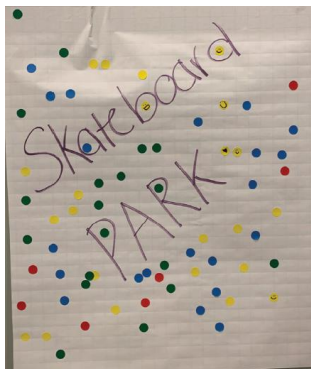
Land is leased to Sunfox Farm – sunflowers, with plans for other perennials and special events.

Over 150 bird species have been observed in this area

In 2024 we completed phase two of the Merrimack River Greenway Trail. Built in partnership with City of Concord FMRGT, LWCF grant and private donors.

Community Planning Meetings for new Kiwanis Park Master Plan

Working with our consultants, VHB out of Bedford, NH, we held two community meetings in 2023 to help create the new Kiwanis Park Master Plan. Over one hundred people attended each meeting. The new park master plan and new skate park was also discussed several times at the Everett Arena and Recreation and Parks Committees.





Concord Crew
docks, boat ramps,
etc.

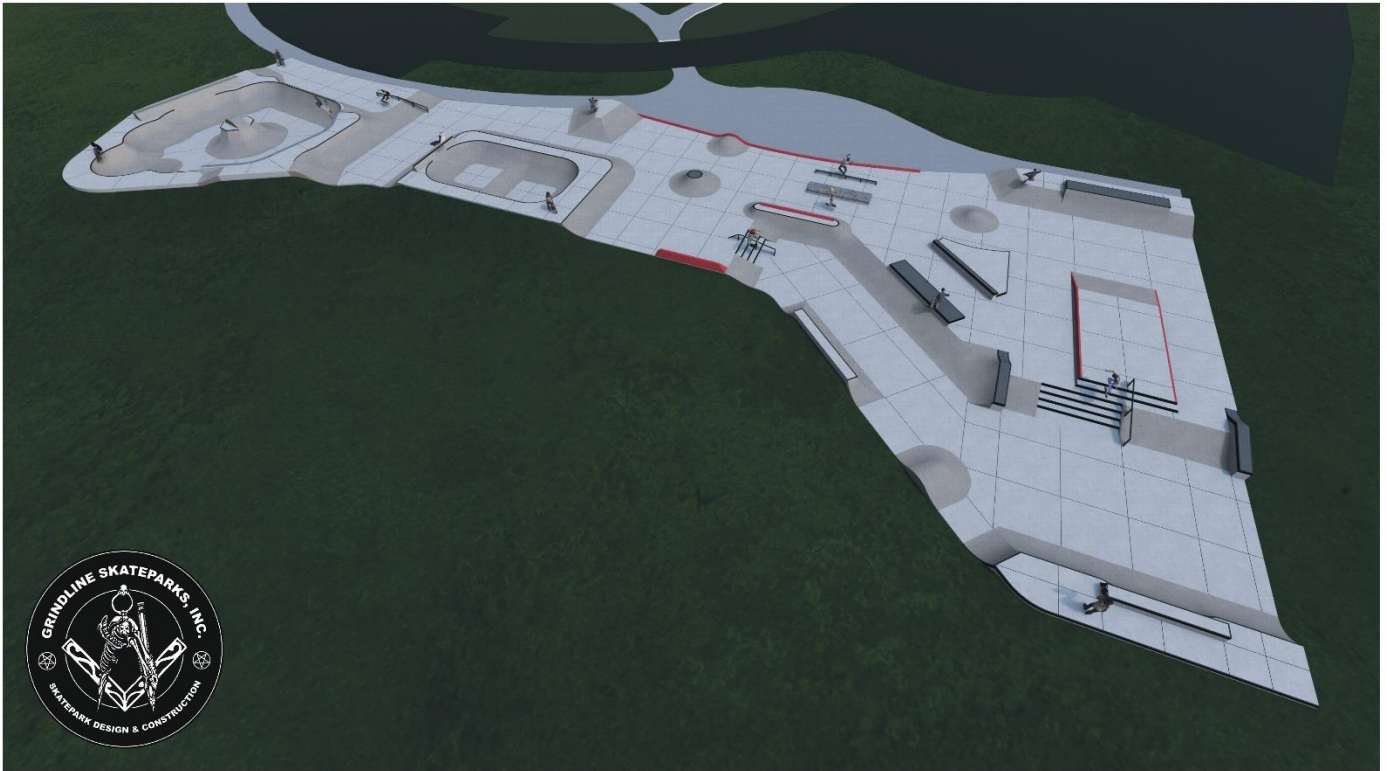


Approved Kiwanis Park Master Plan



Understanding the existing Skate Park in Kiwanis Park was built in the early 1990s is old and needs to be replaced we held additional community meetings with the Skate Park users and the nonprofit Concord Skate Park Association. During these meetings the users helped create the final design for new state of the art Skate Park. Members of the Skate Park Association have also attended several meetings with the Recreation and Parks Advisory Community over the past several years.

With all the positive support and interest in the new Kiwanis Park Master Plan City Council approved funding for final design and permitting of the new park master plan including the new skate park in the FY24 budget. Final design is ongoing.



Concord Skatepark Concept Concord, NH.

Concord Skatepark Concept
PC071924 | July 19th, 2024
inform@grindline.com | grindline.com

The construction of the new Skate Park will be carried out in two phases with the first phase estimated to cost one million dollars. Additionally, the second phase is projected to require an additional \$900,000 for completion.

In FY25 the City secured a \$500,000 Land and Water Conservation Grant to support the construction of the skate park. However, this grant requires a dollar-for-dollar local match. To meet this requirement, we are partnering with the Skate Park Association to raise the necessary \$500,000 in matching funds. To date, with this \$10,000 donation the City has received just over \$22,000 in donations.

In coordination with the Skate Park Association, we have a comprehensive fundraising effort underway, with the goal of securing the matching funds necessary to construct Phase One of the new skate park. For additional information on the planning, public input and fundraising plans please visit our web page on the project: www.concordnh.gov/1920/Kiwanis-Park-and-Skate-Park