



CITY OF CONCORD

REPORT TO THE MAYOR AND CITY COUNCIL

FROM: David Gill, Parks and Recreation Director

DATE: October 24, 2016

SUBJECT: New Multi-Purpose Building/Skate House at White Park

Recommendation

Review and accept this report.

Background

In 1958, the current skate house at White Park was built. It was immediately used by hundreds of skaters and a generation of Concord youth grew up around the facility. By the middle 90's, the building began to decline and shortly thereafter, the bathroom, heating systems and electrical systems began to fail and by the late 2000's the building was closed due to numerous safety violations.

In 2001, the City of Concord began a Master Plan Process for several of the neighborhood Parks. In the approved White Park Master Plan it called for a new building to replace the old building. In the approved Master Plan the new building was shown next to the parking lot and White Street.

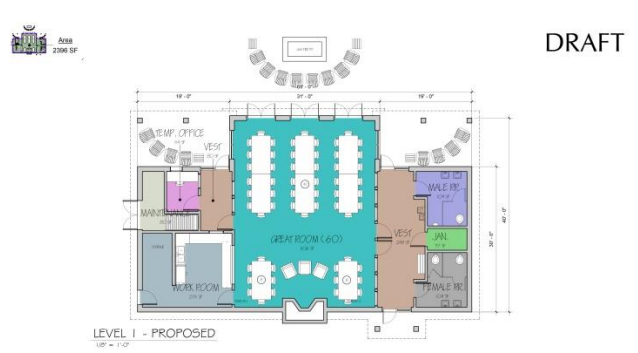
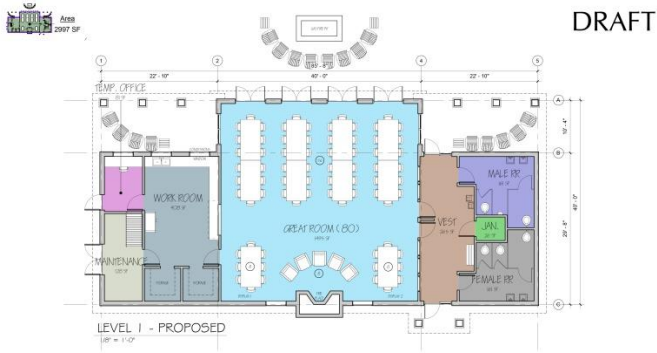
At the July 2012 City Council meeting, the Parks and Recreation Director presented a report outlining how the City could use private donations to design a new facility. At the City Council Meeting on August 13, 2012 City Council approved a donation by the H.L. Turner Group Inc. for the design of the new building. H.L. Turner Group Inc., located here in Concord, offered their architectural and engineering services for the new skate house at no cost to the City. The donation at the time was estimated to be valued at \$40,000.

Several Public Meetings followed and between December 2012 and present day, a total of seven community meetings have been held.

From these meeting several design concepts have been created and vetted by the community. Options 1 and 2 focused on following the recommendations from the White Park Master Plan that locates the new facility near the new parking lot along White Street while Option 3 looked at building a new facility at the current location of the skate house.

At the last public meeting in September it was recommended that the City move forward with Option 3 and build a new building at the current location of the skate house.

Option 1 and 2: Both of these options provided indoor and outdoor seating, bathrooms and an area for skate rentals and refreshments. Option 1 was approx. 3,000 square feet while Option 2 is approx. 2,400 square feet.



SKATE HOUSE / MULTI-USE BUILDING
 WHITE PARK CONCORD, NEW HAMPSHIRE
 OPTION 4B - FLOOR PLAN
 SCALE: As indicated
 DATE: 01.13.13
 TURNER GROUP

SKATE HOUSE / MULTI-USE BUILDING
 WHITE PARK CONCORD, NEW HAMPSHIRE
 OPTION 4B.2 - FLOOR PLAN
 SCALE: As indicated
 DATE: 01.07.13
 TURNER GROUP

Option 1

Option 2

Site Layout for Option 1 and 2



SKATE HOUSE / MULTI-USE BUILDING
 WHITE PARK CONCORD, NEW HAMPSHIRE
 OPTION 4B - SITE LAYOUT
 SCALE: 1" = 40'-0"
 DATE: 02.01.13
 TURNER GROUP

Option 3: Build new facility at current location of skate house, approximately same size of building at today. New facility will provide indoor and outdoor seating, bathrooms and area for skate rentals and refreshments.



Site Layout for Option 3



Recommendations

By accepting this report, City Council would direct City staff to work with the HL Turner Group to begin final design and construction documents for Option 3 and work with City Administration in conjunction with the Purchasing Division and the HL Turner Group, to commence the process of engaging a contractor for the project.

As this project is currently funded in the FY17 with \$450,000 (50%) General Obligation Bonds and \$450,000 (50%) from private donations, on approval of this report city staff will begin working with the community to raise the required match. All donations will need to be approved by City Council before construction begins. Over the past several years we have already accepted \$64,539 in donations for this project.