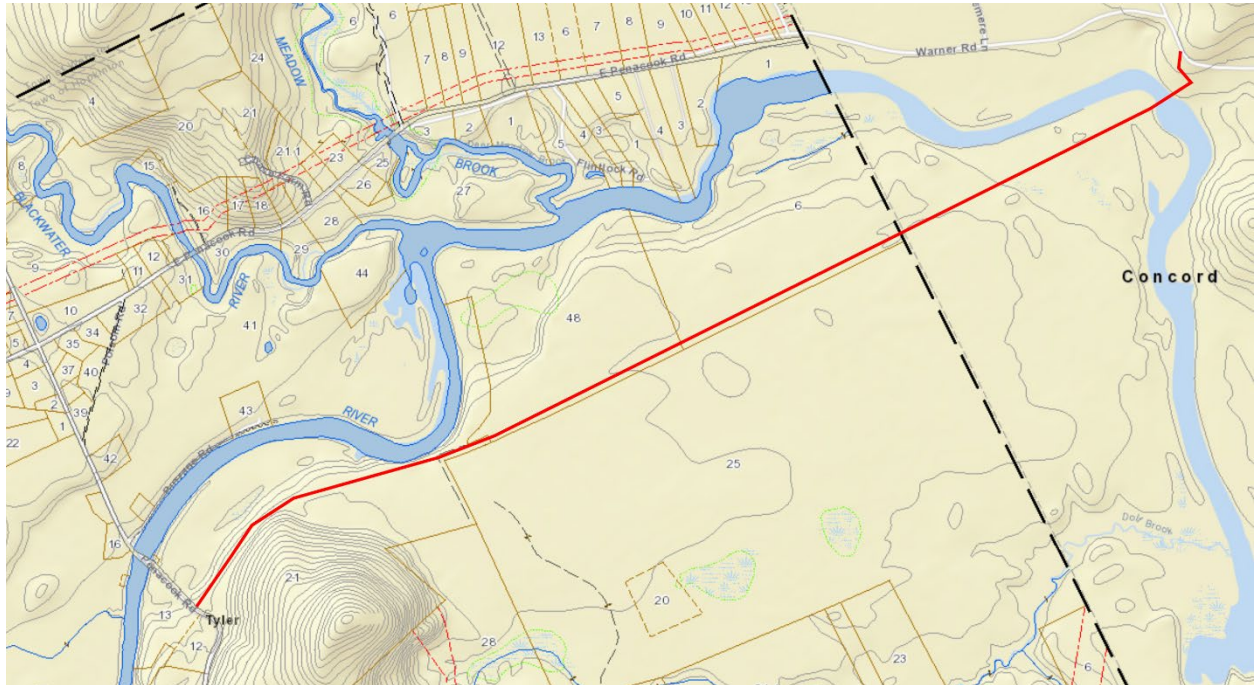




June 22, 2021

To: City of Concord
Re: Construction and maintenance of the Concord – Lake Sunapee Rail Trail

The Friends of the Concord – Lake Sunapee Rail Trail, a 501c3 non profit organization, would like to build and maintain 2.4 miles of multi use rail trail from Lehtenen Park to the Mast Yard and on to Contoocook.



Trail surface: We intend to use a 3/8" minus stone dust material as the running surface of the trail. We typically build a 10' wide trail with that surface. On each edge we clear an additional 2' so there is some shoulder space. In places we may install a bench, signage, a kiosk, fencing, and similar trail infrastructure that help encourage the use and behavior we want on the trail. To be able to maintain the trail and related infrastructure we typically ask for a 30' easement. This provides sufficient space to allow us to trim branches and clean debris just off the trail without trespassing or needing temporary easements.

We are working to secure permission to use the remaining three sections of land. This is not done yet. Therefore, we cannot say when exactly we would start in on the construction. But we would certainly be consulting with the City before any work took place.

Much the railroad grade on these two parcels is already active trail for hiking, biking and snowmobiling. The section from the parking area on Horsehill Rd that comes down to the level of the railroad grade will need some additional planning. The slope may be too steep to hold the compacted stonedust. It may scour during heavy rain events.

Fencing: We don't believe fencing will be necessary along the trail in this section because its active trail now and doesn't have fencing.

Gates: We use standard steel NH Bureau of Trails style gates when necessary.



Parking: There is limited parking at Horsehill Rd today. People can also park at the Mast Yard State Forest Parking area on Broad Cove Rd. There appears to be additional parking at the Powerlines on Broadcove Rd just over the town line in Hopkinton. We will continue to look for additional parking opportunities as we get closer to construction.

Routine maintenance: Maintenance is done on foot or with an occasional pickup truck to take out downed trees. After initial construction it should be many years before we would have to come in with additional heavy equipment.

