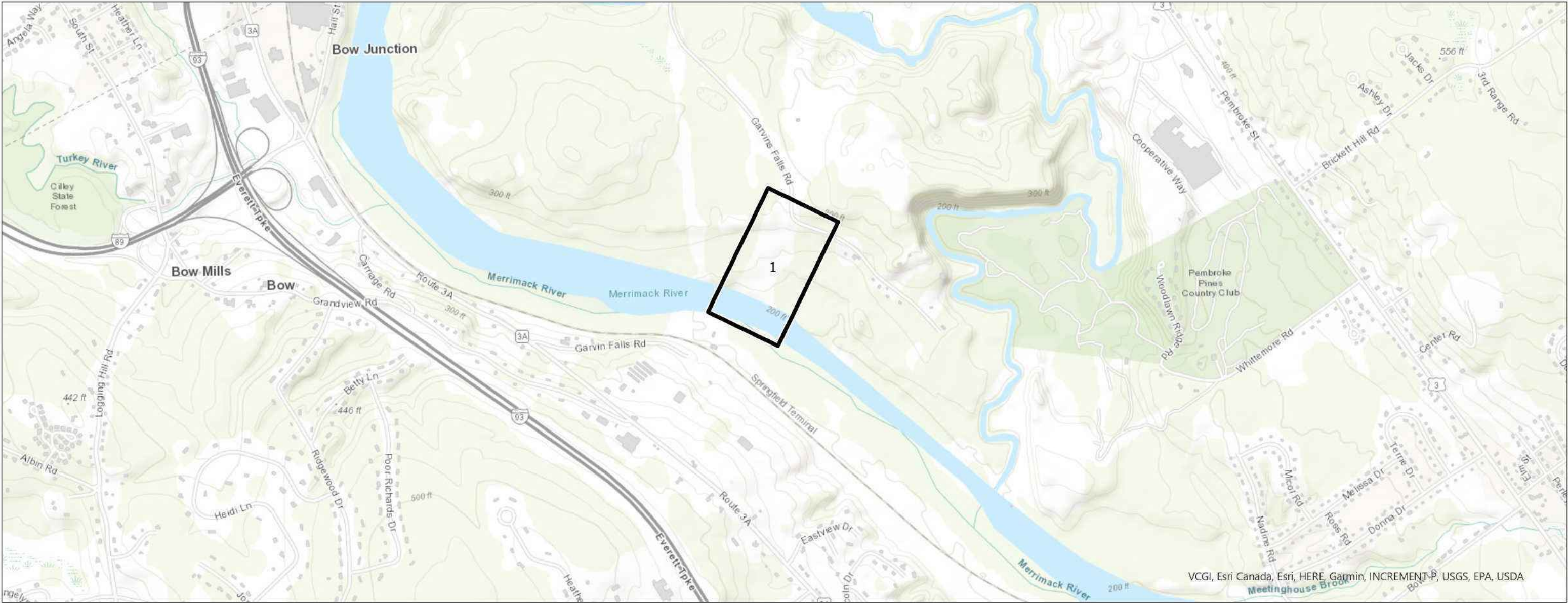


334G Distribution Line Structure Replacement Project

CONCORD, NEW HAMPSHIRE
Environmental Permitting Plan Set

Date: April 30, 2025



VCGI, Esri Canada, Esri, HERE, Garmin, INCREMENT P, USGS, EPA, USDA

PREPARED FOR:

EVERSOURCE
ENERGY

13 Legends Drive
Hooksett, NH 03106



0 0.13 0.25 0.5 Miles

INDEX OF FIGURES

Title Sheet / Index Map
Figure 1 - Site Locus
Figure 2 - Access and Permitting Plan
Figure 3 - Wetland Setback Plan
Figure 4 - Bluff Buffer Plan
Figure 5 - Shoreland Protection Plan
Notesheets 1-6

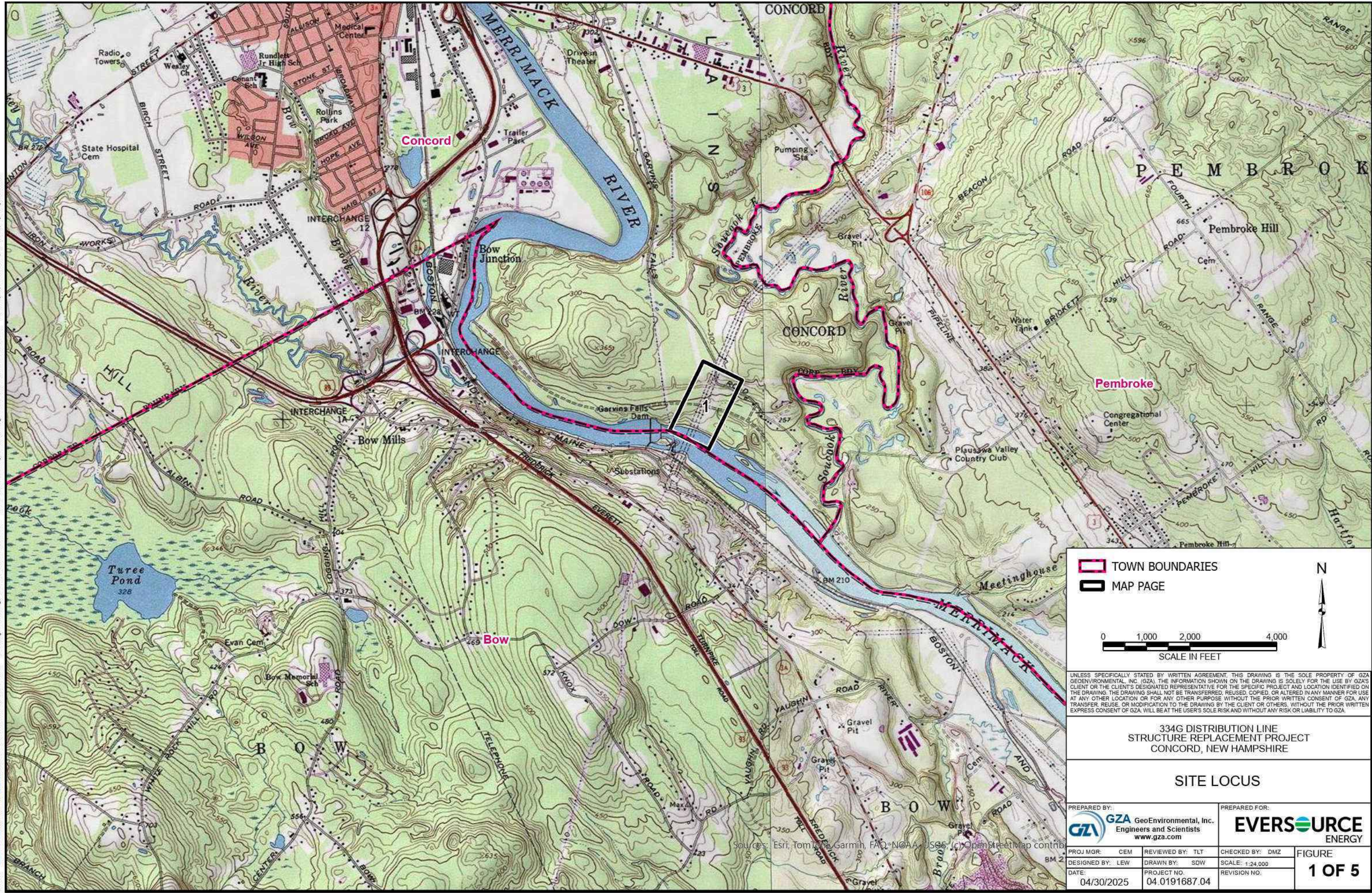
NO.	DATE	REVISIONS

PREPARED BY:



GZA GeoEnvironmental, Inc.
Engineers and Scientists
www.gza.com

© 2025 - GZA GeoEnvironmental, Inc. P:\04\Jobs\0191687\00 - EE Siting Permitting 2019-2022\04.0191687.04 - 334G Structure Replacement\Figures AccPro\334G Concord CUP Plans.aprx, 4/30/2025, 9:40 AM, Sydney Wicklund



TOWN BOUNDARIES

MAP PAGE

0100020004000

SCALE IN FEET

UNLESS SPECIFICALLY STATED BY WRITTEN AGREEMENT, THIS DRAWING IS THE SOLE PROPERTY OF GZA GEOENVIRONMENTAL, INC. (GZA). THE INFORMATION SHOWN ON THE DRAWING IS SOLELY FOR THE USE BY GZA'S CLIENT OR THE CLIENT'S DESIGNATED REPRESENTATIVE FOR THE SPECIFIC PROJECT AND LOCATION IDENTIFIED ON THE DRAWING. THE DRAWING SHALL NOT BE TRANSFERRED, REUSED, COPIED, OR ALTERED IN ANY MANNER FOR USE AT ANY OTHER LOCATION OR FOR ANY OTHER PURPOSE WITHOUT THE PRIOR WRITTEN CONSENT OF GZA. ANY TRANSFER, REUSE, OR MODIFICATION TO THE DRAWING BY THE CLIENT OR OTHERS, WITHOUT THE PRIOR WRITTEN EXPRESS CONSENT OF GZA, WILL BE AT THE USER'S SOLE RISK AND WITHOUT ANY RISK OR LIABILITY TO GZA.

334G DISTRIBUTION LINE
STRUCTURE REPLACEMENT PROJECT
CONCORD, NEW HAMPSHIRE

SITE LOCUS

PREPARED BY:
 GZA GeoEnvironmental, Inc.
Engineers and Scientists
www.gza.com

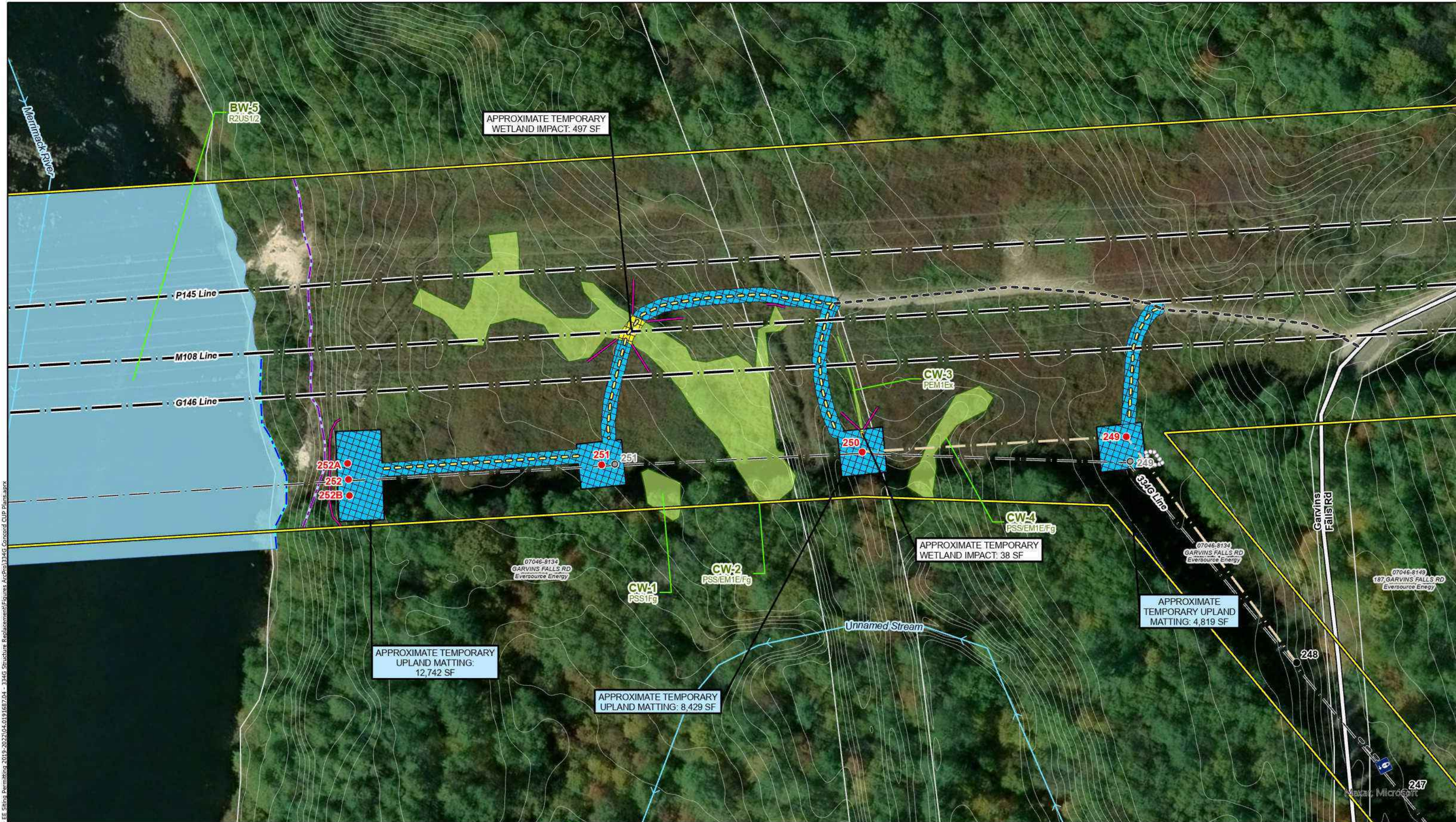
PREPARED FOR:
 EVERSOURCE
ENERGY

PROJ MGR: CEM
DESIGNED BY: LEW
DATE: 04/30/2025

REVIEWED BY: TLT
DRAWN BY: SDW
PROJECT NO: 04.0191687.04

CHECKED BY: DMZ
SCALE: 1:24,000
REVISION NO:

FIGURE
1 OF 5



INDEX MAP

● STRUCTURE TO BE REMOVED

● REPLACEMENT STRUCTURE

● EXISTING STRUCTURE

— NEW DISTRIBUTION LINE ALIGNMENT

— EROSION CONTROLS

— APPROXIMATE ROW

— PROPOSED ACCESS

— EXISTING ACCESS

— SECONDARY ACCESS

— STONEWALL

— EXTENT OF DELINEATION

— TRANSMISSION LINE

— DISTRIBUTION LINE

— NHDOT ROADS

— NHD FLOWLINE

— TOP OF BANK

— ORDINARY HIGH WATER

— APPROXIMATE TEMPORARY UPLAND MATTING

— WORK PAD

— OPEN WATER

— FIELD DELINEATED WETLAND

— RAILROAD

— GATE

— 2FT CONTOUR

— APPROXIMATE TEMPORARY WETLAND MATTING

— TOWN BOUNDARIES

This mapping product has been created to comply with submittal requirements to obtain certain regulatory approvals and, as such, there is no reliance on the information contained herein for any other purpose.

MODIFICATIONS IN ACCESS ROUTES LOCATIONS OR OTHER WETLANDS IMPACT AREAS MUST BE IN COMPLIANCE WITH NHDES WETLANDS RULES FOR MINIMUM IMPACT:

ENV-WT 307 - GENERAL REQUIREMENTS

ENV-WT 313.03 - AVOIDANCE AND MINIMIZATION

ENV-WT 521 - UTILITY PROJECT SPECIFIC CONDITIONS

1 in = 100 ft

0 50 100 Feet

NO.

DATE

REVISIONS

EVERSOURCE ENERGY

334G Distribution Line
Structure Replacement Project
Figure 2 - Access and Permitting Plans

Concord, NH

Date: April 30, 2025

04.0191687.04

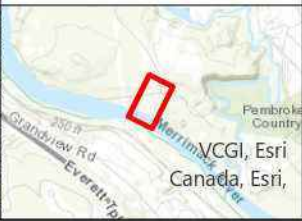
FIGURE

2 OF 5



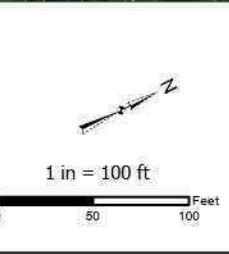
Path: P:\04068\01916005\040191687\00 - EE Siting Permitting\2019-2023\040191687\04 - 334G Structure Replacement\Figures\AcPro\334G Concord Cup Plans.aprx

INDEX MAP



	STRUCTURE TO BE REMOVED		APPROXIMATE ROW		DISTRIBUTION LINE		APPROXIMATE TEMPORARY UPLAND MATTING		2FT CONTOUR
	REPLACEMENT STRUCTURE		CULVERT		NHDOT ROADS		WORK PAD		CONCORD WETLAND BUFFER
	EXISTING STRUCTURE		PROPOSED ACCESS		NHD FLOWLINE		OPEN WATER		APPROXIMATE TEMPORARY WETLAND BUFFER IMPACT AREA
	NEW DISTRIBUTION LINE ALIGNMENT		EXISTING ACCESS		TOP OF BANK		FIELD DELINEATED WETLAND		
	GATE		SECONDARY ACCESS		ORDINARY HIGH WATER		RAILROAD		
	EROSION CONTROLS		STONEWALL		APPROXIMATE TEMPORARY WETLAND MATTING		TOWN BOUNDARIES		
			EXTENT OF DELINEATION						
			TRANSMISSION LINE						

This mapping product has been created to comply with submittal requirements to obtain certain regulatory approvals and, as such, there is no reliance on the information contained herein for any other purpose. MODIFICATIONS IN ACCESS ROUTES LOCATIONS OR OTHER WETLANDS IMPACT AREAS MUST BE IN COMPLIANCE WITH NHDES WETLANDS RULES FOR MINIMUM IMPACT: ENV-WT 307 - GENERAL REQUIREMENTS ENV-WT 313.03 - AVOIDANCE AND MINIMIZATION ENV-WT 521 - UTILITY PROJECT SPECIFIC CONDITIONS



NO.	DATE	REVISIONS

EVERSOURCE ENERGY	
334G Distribution Line Structure Replacement Project	
Figure 3 - Wetland Setback Plan	
Concord, NH	FIGURE
Date: March 11, 2025	3 OF 5
04.0191687.04	



INDEX MAP

● STRUCTURE TO BE REMOVED	— EROSION CONTROLS	— TRANSMISSION LINE	■ APPROXIMATE TEMPORARY UPLAND MATTING	■ 50 FT BLUFF BUFFER
● REPLACEMENT STRUCTURE	— APPROXIMATE ROW	— DISTRIBUTION LINE	■ WORK PAD	■ APPROXIMATE TEMPORARY 50' BLUFF BUFFER IMPACT
● EXISTING STRUCTURE	● CULVERT	— NHDOT ROADS	■ OPEN WATER	■ APPROXIMATE TEMPORARY IMPACT WITHIN BLUFF AREA
— NEW DISTRIBUTION LINE ALIGNMENT	— PROPOSED ACCESS	— NHD FLOWLINE	■ FIELD DELINEATED WETLAND	
— TOP OF BLUFF	— EXISTING ACCESS	— TOP OF BANK	— RAILROAD	
■ GATE	— SECONDARY ACCESS	— ORDINARY HIGH WATER	— TOWN BOUNDARIES	
	○ STONEWALL	— APPROXIMATE TEMPORARY WETLAND MATTING	— 2FT CONTOUR	
	— EXTENT OF DELINEATION			

This mapping product has been created to comply with submittal requirements to obtain certain regulatory approvals and, as such, there is no reliance on the information contained herein for any other purpose.

MODIFICATIONS IN ACCESS ROUTES LOCATIONS OR OTHER WETLANDS IMPACT AREAS MUST BE IN COMPLIANCE WITH NHDES WETLANDS RULES FOR MINIMUM IMPACT:

ENV-WT 307 - GENERAL REQUIREMENTS

ENV-WT 313.03 - AVOIDANCE AND MINIMIZATION

ENV-WT 521 - UTILITY PROJECT SPECIFIC CONDITIONS

1 in = 100 ft

NO.	DATE	REVISIONS

EVERSOURCE ENERGY

334G Distribution Line Structure Replacement Project

Figure 4 - Bluff Buffer Plan

Concord, NH

Date: April 30, 2025

04.0191687.04

FIGURE

4 OF 5

© 2025 - GZA GeoEnvironmental, Inc. P:\04Jobs\0191680s\04.0191687.00 - EE Siting Permitting 2019-2022\04.0191687.04 - 334G Structure Replacement\Figures ArcPro\334G Concord CUP Plans.aprx, 4/30/2025, 9:50 AM, Sydney Wicklund

CONSTRUCTION SEQUENCE:

1. WETLAND BOUNDARIES TO BE CLEARLY MARKED PRIOR TO THE START OF CONSTRUCTION.
2. SEDIMENT AND EROSION CONTROL MEASURES SHALL BE INSTALLED IN ACCORDANCE WITH THE DETAIL PROVIDED, AS NECESSARY, AND CONSISTENT WITH THE NHDES MARCH 2019 BMP MANUAL FOR UTILITY MAINTENANCE.
3. WETLAND IMPACTS ASSOCIATED WITH WETLAND CROSSINGS ARE REQUIRED FOR ACCESS BETWEEN STRUCTURES WITHIN THE RIGHT OF WAY. LOOK FOR FIELD FLAGGING AND REFER TO PROJECT PLANS FOR THESE LOCATIONS.
4. ADEQUATE PRECAUTION SHALL BE EXERCISED TO AVOID SPILLAGE OF FUEL OILS, CHEMICALS, OR SIMILAR SUBSTANCES. NO FUELS, LUBRICANTS, CHEMICALS OR SIMILAR SUBSTANCES SHALL BE STORED BENEATH TREES OR IN THE VICINITY OF ANY WETLANDS, RIVER, STREAM OR OTHER BODY OF WATER, OR IN THE VICINITY OF NATURAL OR MAN-MADE CHANNELS LEADING THERETO. NO POWER EQUIPMENT SHALL BE STORED, MAINTAINED, OR FUELED IN ANY AREA ADJACENT TO A WETLAND, RIVER, STREAM OR OTHER BODY OF WATER.
5. REMOVE COMPLETELY ALL CONTAMINATION FROM ANY SPILLAGE OF CHEMICALS OR PETROLEUM PRODUCT AND COMPLETE REHABILITATION OF THE AFFECTED AREA.
6. ACCESS ROUTES HAVE BEEN SELECTED TO PREVENT DEGRADATION OF THE RIGHT-OF-WAY AND MINIMIZE ENVIRONMENTAL IMPACT. OPERATIONS SHALL BE CONFINED TO THE SPECIFIED ACCESS ROUTES WITHIN THE PROPOSED WETLAND IMPACT AREA. ACCESS ROUTES SHALL NOT EXCEED A 16 FOOT-WIDTH.
7. IMPACT TO VEGETATION WITHIN WETLANDS WILL BE LIMITED TO THE EXTENT NECESSARY TO PLACE THE TIMBER MATS WHERE REQUIRED.
8. LOW GROWING VARIETIES OF VEGETATION ADJACENT TO WETLANDS SHALL BE PRESERVED TO THE EXTENT POSSIBLE. STUMPS SHALL NOT BE REMOVED, AND THERE SHALL BE NO EXCAVATIONS, FILLS OR GRADING DONE ADJACENT TO WETLANDS, UNLESS MINOR EXCAVATIONS OR GRADING IS NEEDED FOR ACCESS OR WORK PADS AND THEN ONLY WITHIN LIMITS SHOWN ON PROJECT PLANS.
9. TIMBER MATS AND PERIMETER CONTROLS WILL BE USED ALONG ACCESS ROUTES AND WORK PADS WITHIN WETLAND AREAS. THESE MATS ARE CONSTRUCTED OF HEAVY TIMBERS OR COMPOSITE MATERIAL, BOLTED TOGETHER, AND ARE PLACED END-TO-END IN THE WETLAND TO SUPPORT HEAVY EQUIPMENT. ALL TIMBER MATS SHALL BE PLACED AND REMOVED SO AS NOT TO CAUSE ANY RUTS, CHANNELS OR DEPRESSIONS, OR OTHERWISE CAUSE ANY UNDUE DISTURBANCE TO WETLANDS.
10. IN UPLANDS, ADDITIONAL BMP'S MAY INCLUDE THE PLACEMENT OF GEOTEXTILE FABRIC, 3"-4" STONE, AND GRAVEL TO PROVIDE A SUITABLE ROAD BED. MATTING SHALL BE INSTALLED IN A MANNER TO BRIDGE STREAM CHANNELS. TEMPORARY CULVERTS MAY BE REQUIRED IN AREAS OF HIGH FLOW TO MAINTAIN HYDROLOGIC CONNECTIVITY. ALL MATERIAL WILL BE REMOVED FROM JURISDICTIONAL AREAS AFTER CONSTRUCTION COMPLETION.
11. NO MATERIAL SHALL BE PLACED IN ANY LOCATION OR IN ANY MANNER SO AS TO IMPAIR SURFACE WATER FLOW INTO, THROUGH OR OUT OF ANY WETLAND AREA. NO INSTALLATION SHALL CREATE AN IMPOUNDMENT THAT WILL IMPEDE THE FLOW OF WATER OR CAUSE FLOODING.
12. BIOLOGICAL MONITORING OF PROJECT SPECIES MAY REQUIRE THAT WORK AREAS ARE CLEARED PRIOR TO WORK OR PLACEMENT OF MATERIALS.
13. NO MATERIAL SHALL BE TAKEN FROM THE WETLANDS AREA EXCEPT THAT WHICH MUST NECESSARILY BE REMOVED FOR THE STRUCTURE OR FOUNDATION PLACEMENT OR STABILIZATION. ALL EXCESS MATERIAL TAKEN FROM THE WETLAND WILL BE REMOVED FROM THE SITE.
14. DISCHARGE OF DEWATERING WATER SHOULD NOT BE DIRECTED TOWARDS SURFCE WATERS IDENTIFIED BY NHDES AS TIER 2, TIER 2.5, OR TIER 3 WITHOUT PRIOR AUTHORIZATION FROM EVERSOURCE. SUCH ACTIVITIES TRIGGER TURBIDITY MONITORING AND REPORTING REQUIREMENTS AS OUTLINED IN SECTION 3.3 OF THE 2022 EPA CONSTRUCTION GENERAL PERMIT. TIER 2, TIER 2.5, AND TIER 3 SURFACE WATERS ARE CONSIDERED ALL SURFACE WATERS INCLUDING LAKES, PONDS, MARCHES, AND TIDAL WATERS AS DEFINED BY ENV-WT 104.33. DEWATERING WATER SHOULD BE DIRECTED AWAY FROM SURFACE WATERS, OR BE DISCHARGED TO A VAC TRUCK, POLY TANK, OR UPLAND BASIN, AS APPROVED BY EVERSOURCE. OTHERWISE, TURBIDITY MONITORING DURING DEWATERING ACTIVITIES WILL BE REQUIRED.
15. ANY PROPOSED SUPPORT FILLS SHALL BE CLEAN GRAVEL AND STONE, FREE OF WASTE METAL PRODUCTS, ORGANIC MATERIALS AND SIMILAR DEBRIS AND SHALL NOT EXCEED THE AMOUNT PERMITTED. THIS ALLOWABLE FILL IS THE ONLY FILL THAT MAY REMAIN IN THE WETLAND AFTER CONSTRUCTION. ALL CUT AND FILLS SLOPES SHALL BE SEEDED/LOAMED WITHIN 72 HOURS OF ACHIEVING FINISHED GRADE.
16. INSTALL NEW POLES IN THE LOCATIONS DESIGNATED ON THE PERMITTING PLANS.
17. WIRE INSTALLATION WILL BE PERFORMED IN A MANNER SO AS TO AVOID, OR LIMIT TO THE MAXIMUM EXTENT POSSIBLE, TRAVERSING WETLANDS WITH HEAVY EQUIPMENT. IN SOME CASES, A HELICOPTER MAY BE USED DURING THE INSTALLATION TO MINIMIZE IMPACTS.
18. REMOVAL OF THE OLD POLE WILL OCCUR ONCE THE WIRE HAS BEEN INSTALLED ON THE NEW STRUCTURE. THE OLD STRUCTURES WILL BE REMOVED FROM THE SITE. POLES WILL BE CUT AT THE GROUND SURFACE. FOOTINGS WILL BE ABANDONED IN PLACE TO MINIMIZE IMPACTS.
19. ALL TIMBER MATS, MATERIAL, AND DEBRIS WILL BE REMOVED FROM THE WORK AREA UPON THE COMPLETION OF CONSTRUCTION.
20. UNLESS APPROVED AS PERMANENT IMPACT, TIMBER MATS MUST ONLY BE INSTALLED FOR ONE GROWING SEASON. TIMBER MATS INSTALLED DURING THE ACTIVE GROWING SEASON (MAY 1 TO OCTOBER 1) MUST BE REMOVED PRIOR TO THE START OF THE FOLLOWING GROWING SEASON (BY APRIL 30 LATEST).
21. UPLAND DISTURBED AREAS SHALL BE RESTORED AND STABILIZED UPON COMPLETION OF CONSTRUCTION. WORK PAD RESTORATION SHOULD INCLUDE REDUCING THE WORK PAD TO A 20 BY 30 FOOT AREA, AND REDUCING SLOPES TO A MAXIMUM OF 25%. STOCKPILED MATERIAL SHOULD BE SPREAD TO REDUCE ANY UNNECESSARY SLOPES. GRAVEL WORK PADS AND SLOPES SHOULD BE SCARIFIED TO A MINIMUM OF 3" BEFORE SPREADING TOPSOIL/LOAM. DISTURBED UPLANDS SHALL BE SEEDED WITH A GRASS MIX.
22. TEMPORARY WETLAND IMPACTS WILL BE RE-GRADED TO ORIGINAL CONTOURS TO THE GREATEST EXTENT PRACTICABLE FOLLOWING CONSTRUCTION. EROSION CONTROL/RESTORATION SEED MIX WILL BE APPLIED AS NECESSARY IF THE SURROUNDING NATIVE SEED BANK DOES NOT RESULT IN ADEQUATE VEGETATIVE COVER.
23. MULCH USED FOR STABILIZATION SHALL CONSIST OF SEEDLESS STRAW.
24. SEDIMENT AND EROSION CONTROL MEASURES WILL BE EVALUATED AND REMOVED IF NECESSARY UPON THE COMPLETION OF CONSTRUCTION.
25. UNLESS OTHERWISE REQUESTED BY UNDERLYING PROPERTY OWNERS AND APPROVED BY EVERSOURCE, COMMERCIAL LOAM WILL NOT BE USED AS PART OF RESTORATION. ONLY IN-SITU TOPSOIL WILL BE USED TO RESTORE DISTURBED AREAS.
26. RESTORATION REQUIREMENTS MAY INLCUDE A PERCENT COVER GOAL AND EXTEND BEYOND THE FINAL CONSTRUCTION ACTIVITIES.

WINTER CONSTRUCTION NOTES:

1. PROPOSED VEGETATED AREAS WHICH DO NOT EXHIBIT A MINIMUM OF 85% VEGETATIVE GROWTH BY OCTOBER 15TH, OR WHICH ARE DISTURBED AFTER OCTOBER 15TH, SHALL BE STABILIZED. STABILIZATION METHODS SHALL INCLUDE SEEDING AND MULCH, AND INSTALLATION OF EROSION CONTROL BLANKETS ON SLOPES GREATER THAN 3:1, AND SEEDING AND PLACING 3 TO 4 TONS OF MULCH PER ACRE, SECURED WITH ANCHORED NETTING. ELSEWHERE, THE INSTALLATION OF EROSION CONTROL BLANKETS OR MULCH AND NETTING SHALL NOT OCCUR OVER ACCUMULATED SNOW OR FROZEN GROUND AND SHALL BE COMPLETED IN ADVANCE OF THAW OR SPRING MELT EVENTS.
2. DITCHES OR SWALES WHICH DO NOT EXHIBIT A MINIMUM OF 85% VEGETATIVE GROWTH BY OCTOBER 15TH, OR WHICH ARE DISTURBED AFTER OCTOBER 15TH, SHALL BE TEMPORARILY STABILIZED WITH STONE OR EROSION CONTROL BLANKETS APPROPRIATE FOR THE DESIGN FLOW CONDITIONS.
3. AFTER NOVEMBER 15TH, INCOMPLETE ROAD OR PARKING SURFACES, WHERE WORK HAS STOPPED FOR THE WINTER SEASON, SHALL BE PROTECTED WITH A MINIMUM OF 3 INCHES OF CRUSHED GRAVEL (NHDOT 304.3).
4. PROJECTS IN WHICH THERE IS AN ACTIVE NOI AND CONSTRUCTION IS COMPLETED BETWEEN OCTOBER 15 AND APRIL 31 MUST BE MONITORED FOR A MINIMUM OF 70% VEGETATIVE GROWTH IN ORDER TO SUBMIT A NOT THROUGH THE EPA.

GENERAL NOTES:

OWNER: EVERSOURCE ENERGY
13 LEGENDS DRIVE
HOOKSETT, NH 03106

1. BASE PLAN PROVIDED BY EVERSOURCE ENERGY. EVERSOURCE ENERGY PROVIDED THE UTILITY DESIGN.
2. JURISDICTIONAL WETLANDS WERE CONFIRMED BY GZA GEOENVIRONMENTAL, INC. IN MAY 2024, IN ACCORDANCE WITH THE 1987 U.S. ARMY CORPS OF ENGINEERS' "WETLANDS DELINEATION MANUAL, TECHNICAL REPORT Y-87-1," AND REGIONAL SUPPLEMENT TO THE CORPS OF ENGINEERS WETLAND DELINEATION MANUAL: NORTH CENTRAL AND NORTHEAST REGION," JANUARY 2012. WETLANDS WILL BE REVIEWED BY GZA GEOENVIRONMENTAL, INC. PRIOR TO START OF WORK.
3. GZA EVALUATED WETLANDS AS POTENTIAL VERNAL POOLS IN MAY 2024 IN ACCORDANCE WITH "IDENTIFICATION AND DOCUMENTATION OF VERNAL POOLS IN NEW HAMPSHIRE," 2016, NEW HAMPSHIRE FISH AND GAME DEPARTMENT, NONGAME AND ANDANGERED WILDLIFE PROGRAM.
4. SITE PLAN IS FOR PERMITTING PURPOSES ONLY AND DOES NOT REPRESENT A PROPERTY BOUNDARY SURVEY.
5. THE PROJECT WILL BE MANAGED IN A MANNER THAT MEETS THE REQUIREMENTS AND INTENT OF RSA 430:53 AND CHAPTER AGR 3800, AS WELL AS SECTION 2.10 OF THE NHDES BEST MANAGEMENT PRACTICES MANUAL FOR UTILITY MAINTENANCE IN AND ADJACENT TO WETLANDS AND WATERBODIES IN NEW HAMPSHIRE RELATIVE TO INVASIVE SPECIES.
6. IN ACCORDANCE WITH ENV-WQ 1505.02, THE SMALLEST PRACTICAL AREA SHALL BE DISTURBED DURING CONSTRUCTION, BUT IN NO CASE SHALL EXCEED 5 ACRES AT ANY ONE TIME BEFORE DISTURBED AREAS ARE STABILIZED. AN AREA SHALL BE CONSIDERED STABLE IF ONE OF THE FOLLOWING HAS OCCURRED:
 - A MINIMUM 85 PERCENT VEGETATED GROWTH HAS BEEN ESTABLISHED
 - A MINIMUM OF 3 INCHES OF NON-EROSIVE MATERIAL HAS BEEN INSTALLED
 - OR, EROSION CONTROL BLANKETS HAVE BEEN PROPERLY INSTALLED.
7. MATTING WILL BE INSTALLED WITHIN THE BLUFF, BLUFF BUFFER, WETLAND, WETLAND BUFFER, AND SHORELAND AREAS. NO GROUND DISTURBANCE IS ALLOWED BEYOND THE DISTURBANCE REQUIRED FOR THE POLE REPLACEMENT.


EROSION CONTROL/RESTORATION NOTES:

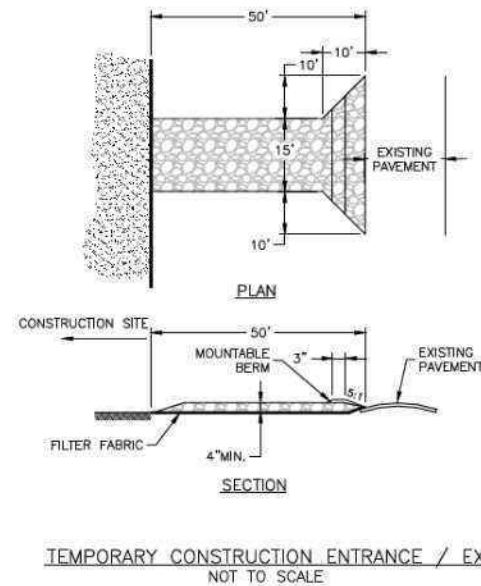
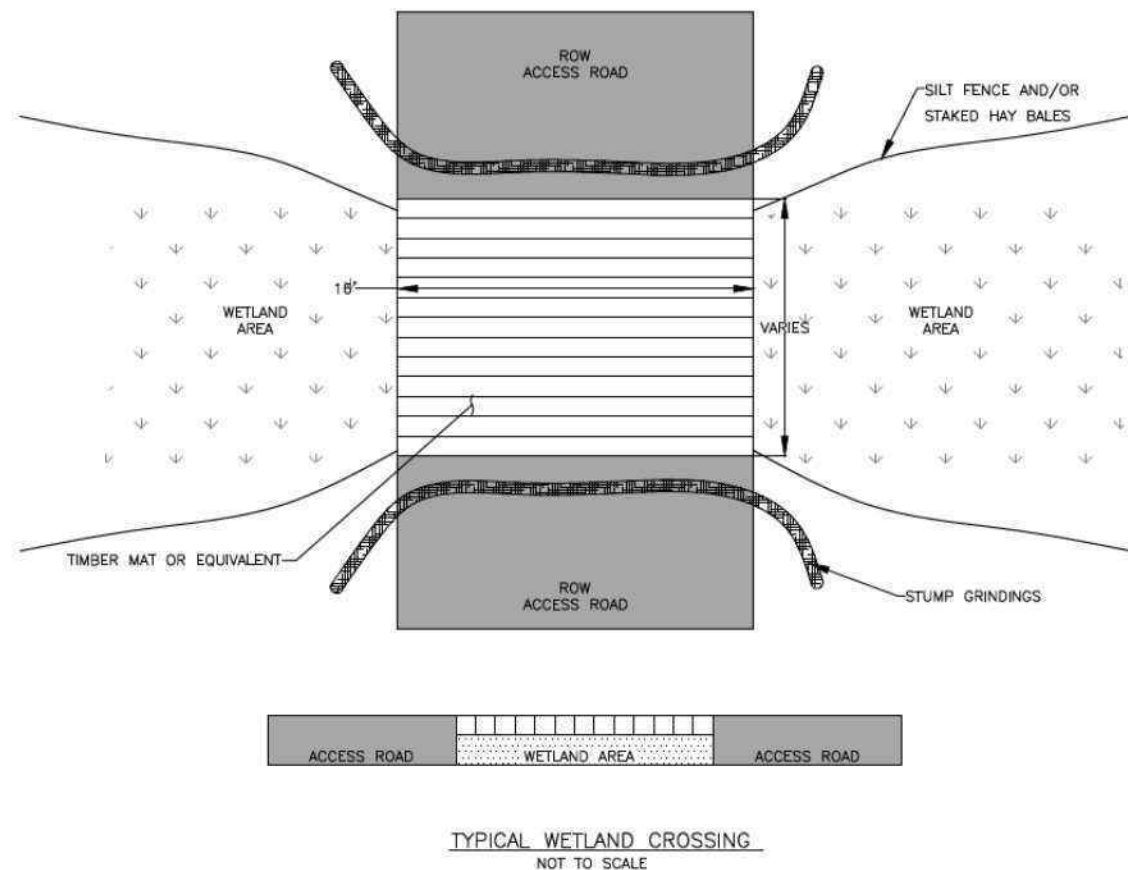
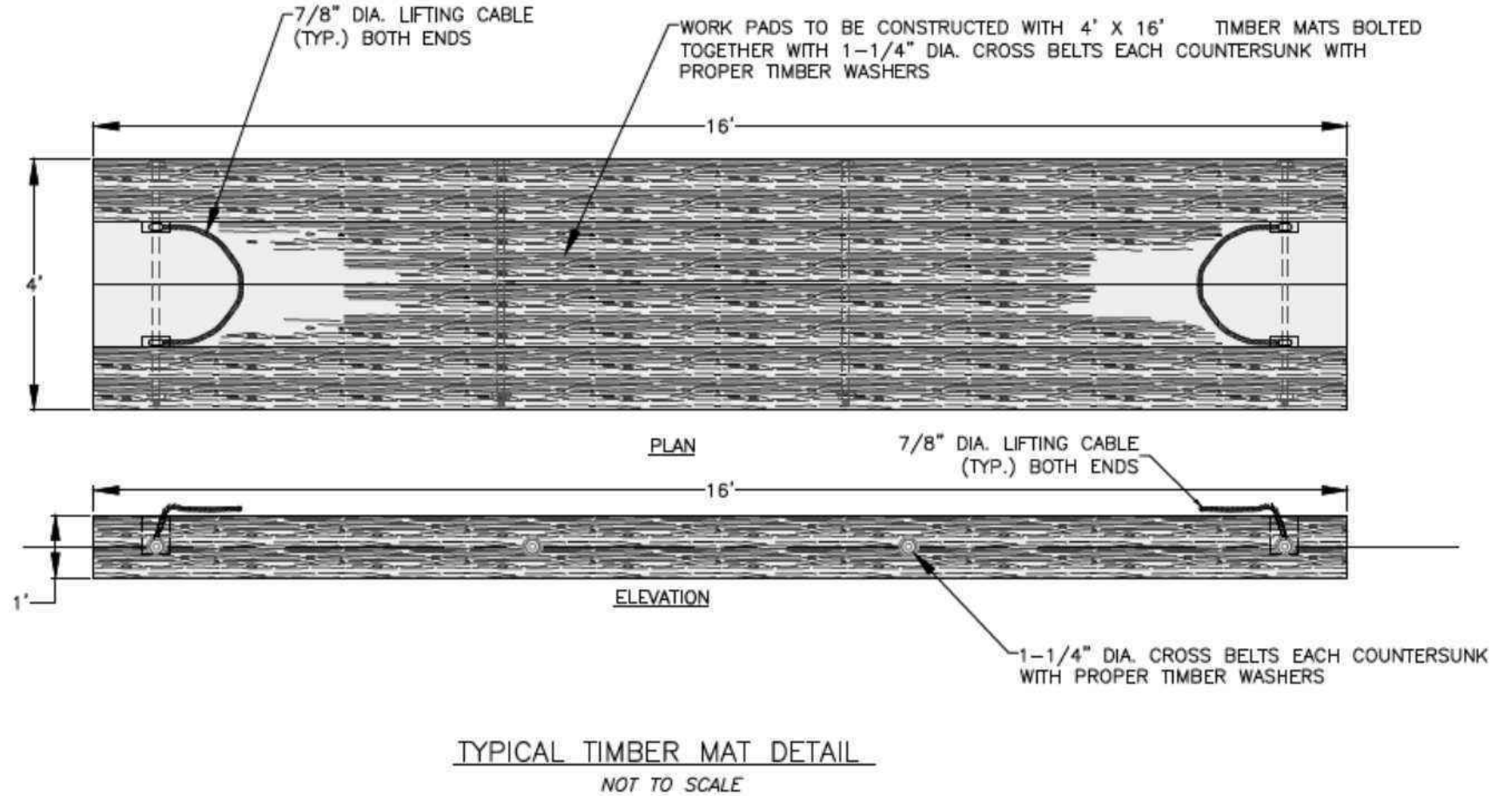
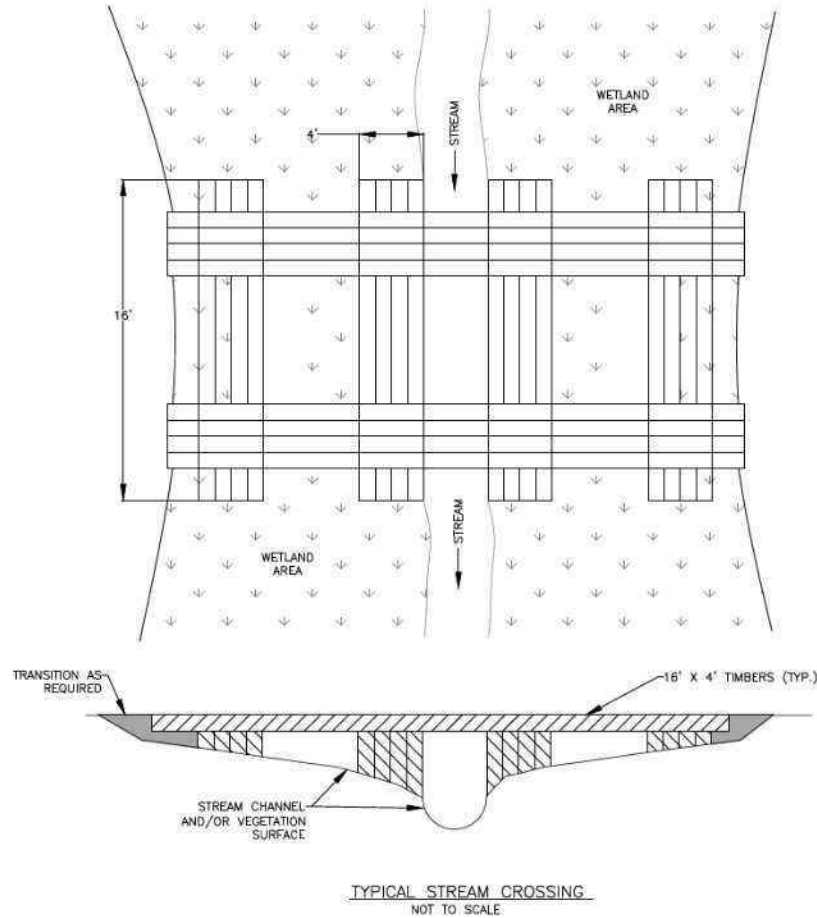
1. INSTALLATION OF EROSION CONTROL GRINDINGS AND/OR SILT FENCES SHALL BE COMPLETE PRIOR TO THE START OF WORK IN ANY GIVEN AREA. EROSION CONTROLS SHALL BE USED DURING CONSTRUCTION AND REMOVED WHEN ALL SLOPES HAVE A HEALTHY STAND OF VEGETATION COVER. EROSION CONTROL MEASURES SHALL BE INSPECTED ON A WEEKLY BASIS AND AFTER .25" OR GREATER RAINFALL EVENTS.
2. AS REQUIRED, CONSTRUCT TEMPORARY BERMS, SILTATION FENCES, SEDIMENT TRAPS, ETC. TO PREVENT EROSION & SEDIMENTATION OF WETLANDS.
3. THE WORK AREA SHALL BE GRADED AND OTHERWISE SHAPED IN SUCH A MANNER AS TO MINIMIZE SOIL EROSION, SILTATION OF DRAINAGE CHANNELS, DAMAGE TO EXISTING VEGETATION, AND DAMAGE TO PROPERTY OUTSIDE LIMITS OF THE WORK AREA. EROSION CONTROL GRINDINGS WILL BE NECESSARY TO ACCOMPLISH THIS END.
4. ANY STRIPPED TOPSOIL SHALL BE STOCKPILED, WITHOUT COMPACTION, AND STABILIZED WITH BMPS.
5. PERMANENT OR TEMPORARY COVER MUST BE IN PLACE BEFORE THE GROWING SEASON ENDS. WHEN SEEDED AREAS ARE NOT MULCHED, PLANTINGS SHOULD BE MADE FROM EARLY SPRING TO MAY 20 OR FROM AUGUST 15 TO SEPTEMBER 15. NO DISTURBED AREA SHALL BE LEFT EXPOSED DURING WINTER MONTHS, PLANT SUITABLE GRASS MIX PRIOR TO OCTOBER 15TH.
6. EROSION CONTROL MATTING, IF REQUIRED, WILL CONSIST OF JUTE MATTING. MATTING WITH WELDED PLASTIC OR 'BIODEGRADABLE PLASTIC' NETTING OR THREAD IS NOT PERMITTED.
7. PER ENV-WT 307.03(C)(6), WATER QUALITY CONTROL MEASURES SHALL REMAIN IN PLACE UNTIL DISTURBED SURFACES ARE STABILIZED TO A CONDITION IN WHICH SOILS ON THE SITE WILL NOT EXPERIENCE ACCELERATED OR UNNATURAL EROSION, SUCH AS ACHIEVING 85% OF GREATER VEGETATIVE COVER USIN AN EROSION CONTROL SEED MIX.

UNLESS SPECIFICALLY STATED BY WRITTEN AGREEMENT, THIS DRAWING IS THE SOLE PROPERTY OF GZA GEOENVIRONMENTAL, INC. (GZA). THE INFORMATION SHOWN ON THE DRAWING IS SOLELY FOR THE USE BY GZA'S CLIENT OR THE CLIENT'S DESIGNATED REPRESENTATIVE FOR THE SPECIFIC PROJECT AND LOCATION IDENTIFIED ON THE DRAWING. THE DRAWING SHALL NOT BE TRANSFERRED, REUSED, COPIED, OR ALTERED IN ANY MANNER FOR USE AT ANY OTHER LOCATION OR FOR ANY OTHER PURPOSE WITHOUT THE PRIOR WRITTEN CONSENT OF GZA. ANY TRANSFER, REUSE, OR MODIFICATION TO THE DRAWING BY THE CLIENT OR OTHERS, WITHOUT THE PRIOR WRITTEN EXPRESS CONSENT OF GZA, WILL BE AT THE USER'S SOLE RISK AND WITHOUT ANY RISK OR LIABILITY TO GZA.

334G DISTRIBUTION LINE
STRUCTURE REPLACEMENT PROJECT
CONCORD, NEW HAMPSHIRE

NOTES

PREPARED BY:  GZA GeoEnvironmental, Inc. Engineers and Scientists www.gza.com		PREPARED FOR: EVERSOURCE ENERGY	
PROJ MGR: CEM	REVIEWED BY: TLT	CHECKED BY: DMZ	SHEET S1
DESIGNED BY: LEW	DRAWN BY: LEW	SCALE:	
DATE: 04/30/2025	PROJECT NO: 04.0191687.04	REVISION NO:	



1. STONE SIZE - USE 2" STONE (MINIMUM) TO 6" STONE (MAXIMUM)
2. LENGTH - GREATER THAN OR EQUAL TO 50 FEET WITH THICKNESS OF 4"
3. WIDTH - FIFTEEN (15) FOOT TYP. BUT NOT LESS THAN FULL WIDTH AT POINTS WHERE INGRESS OR EGRESS OCCURS.
4. SURFACE WATER - ALL SURFACE WATER FLOWING OR DIVERTED TOWARD CONSTRUCTION ENTRANCES SHALL BE PIPED ACROSS ENTRANCE; IF PIPING IS IMPRACTICAL, MOUNTABLE BERM SHALL BE PERMITTED.
5. MAINTENANCE - THE ENTRANCE SHALL BE MAINTAINED IN A CONDITION WHICH SHALL PREVENT TRACKING OR FLOWING OF SEDIMENT ONTO PUBLIC RIGHTS-OF-WAY. THIS MAY REQUIRE PERIODIC TOP DRESSING AND ADDITIONAL STONE AS CONDITIONS DEMAND AND REPAIR OR CLEAN-OUT OF ANY MEASURES USED TO TRAP SEDIMENT, ALL SEDIMENT SPILLED, DROPPED, WASHED OR TRACKED ONTO PUBLIC RIGHTS-OF-WAY MUST BE REMOVED IMMEDIATELY.
6. PERIODIC INSPECTION AND NEEDED MAINTENANCE SHALL BE PROVIDED.
7. THE CLEAN STONE SHOULD BE INSTALLED OVER A GEOTEXTILE FABRIC. GEOTEXTILE FABRIC MAY BE OMITTED FOR PERMANENT CONSTRUCTION ENTRANCES-EXITS ON A CASE-BY-CASE BASIS WITH THE APPROV.
8. FOLLOWING CONSTRUCTION, THE CONSTRUCTION ENTRANCE / EXIT SHALL BE REMOVED AND THE AREA GRADED, SEEDED, AND MULCHED AS NEEDED. ENTRANCE /EXITS MAY REMAIN DEPENDING UPON FUTURE ACCESS NEEDS AND / OR PROJECT - SPECIFIC APPROVALS BUT REQUIRES APPROVAL.

UNLESS SPECIFICALLY STATED BY WRITTEN AGREEMENT, THIS DRAWING IS THE SOLE PROPERTY OF GZA GEOENVIRONMENTAL, INC. (GZA). THE INFORMATION SHOWN ON THE DRAWING IS SOLELY FOR THE USE BY GZA'S CLIENT OR THE CLIENT'S DESIGNATED REPRESENTATIVE FOR THE SPECIFIC PROJECT AND LOCATION IDENTIFIED ON THE DRAWING. THE DRAWING SHALL NOT BE TRANSFERRED, REUSED, COPIED, OR ALTERED IN ANY MANNER FOR USE AT ANY OTHER LOCATION OR FOR ANY OTHER PURPOSE WITHOUT THE PRIOR WRITTEN CONSENT OF GZA. ANY TRANSFER, REUSE, OR MODIFICATION TO THE DRAWING BY THE CLIENT OR OTHERS, WITHOUT THE PRIOR WRITTEN EXPRESS CONSENT OF GZA, WILL BE AT THE USER'S SOLE RISK AND WITHOUT ANY RISK OR LIABILITY TO GZA.

**334G DISTRIBUTION LINE
STRUCTURE REPLACEMENT PROJECT
CONCORD, NEW HAMPSHIRE**

BMP DETAILS

PREPARED BY:
GZA GeoEnvironmental, Inc.
Engineers and Scientists
www.gza.com

PREPARED FOR:
EVERSOURCE
ENERGY

PROJ MGR: CEM

REVIEWED BY: TLT

CHECKED BY: DMZ

SHEET

DESIGNED BY: HP

DRAWN BY: LEW

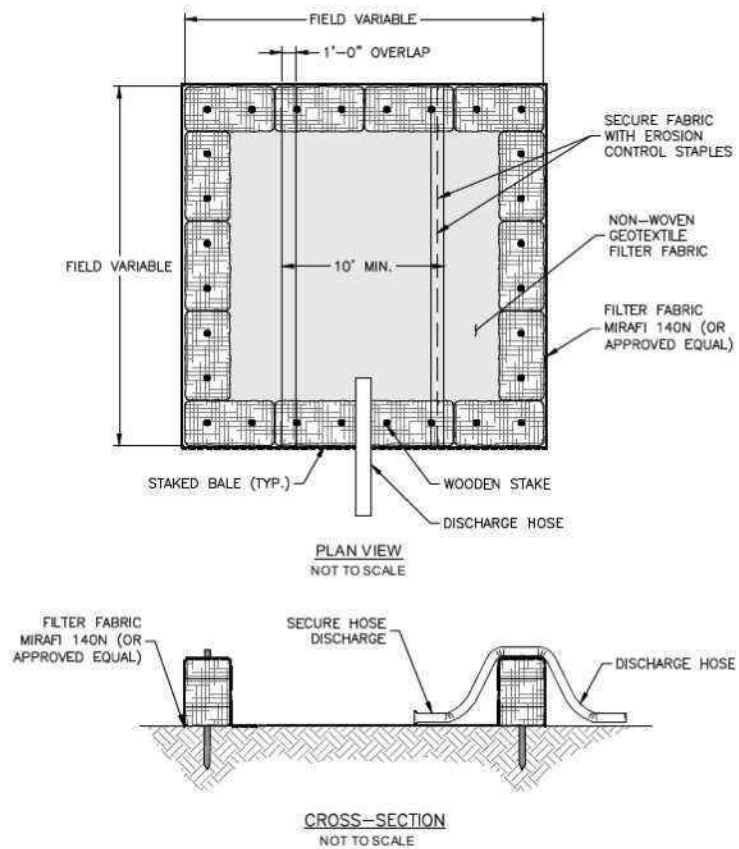
SCALE:

S2

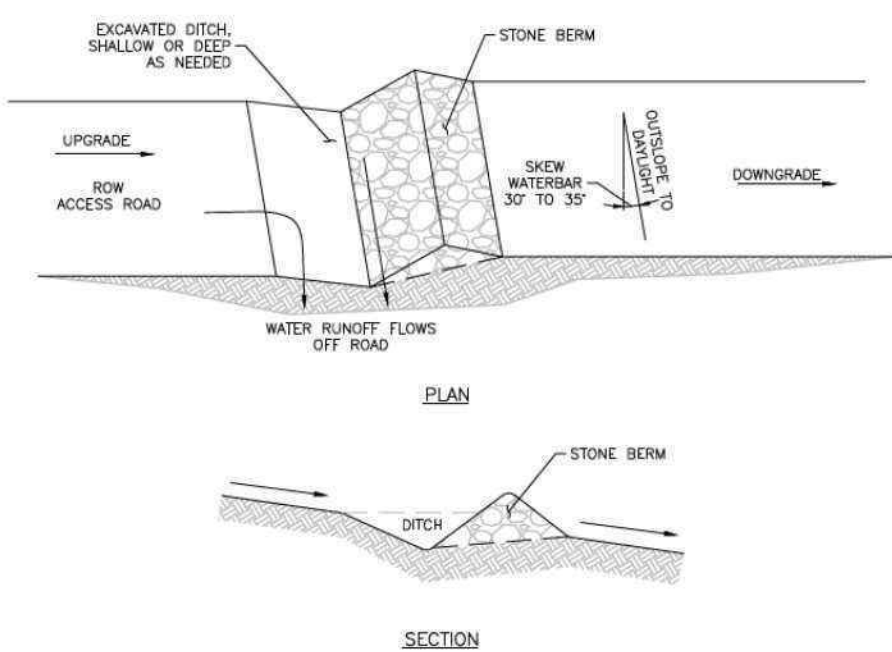
DATE: 04/30/2025

PROJECT NO: 04.0191687.04

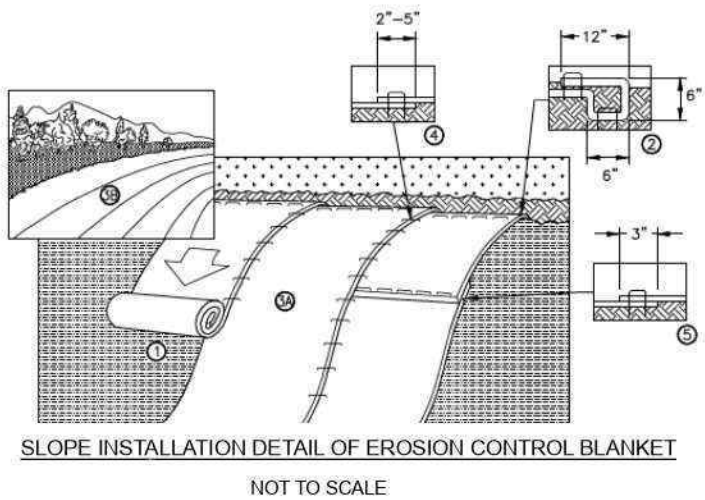
REVISION NO:



DEWATERING BASIN DETAIL



TYPICAL WATER BAR DETAIL

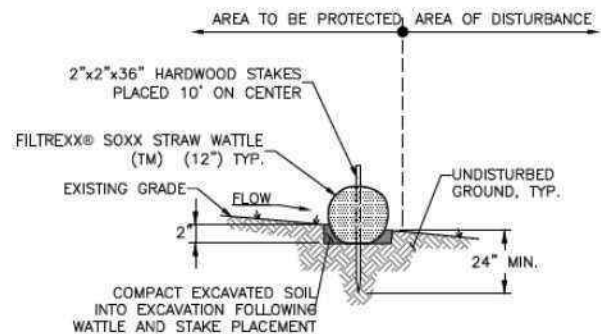


NOTES:

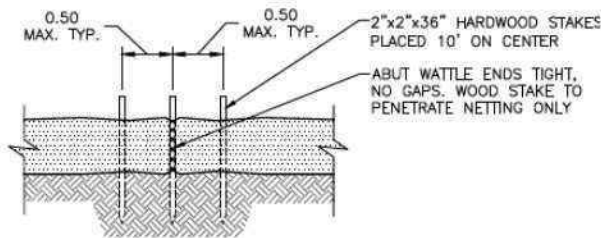
1. EROSION CONTROL BLANKET SHOULD BE INSTALLED VERTICALLY DOWNSLOPE.
2. STAKES/STAPLES SHOULD BE PLACED NO MORE THAN 3 FT. APART VERTICALLY AND 1 FT. APART HORIZONTALLY.
3. SLOPE SURFACES SHOULD BE FREE OF DEBRIS, INCLUDING STICKS, ROCKS AND OTHER OBSTRUCTIONS.
4. BLANKETS SHOULD BE ROLLED OUT LOOSELY AND STAKED/STAPLED TO MAINTAIN DIRECT SOIL CONTACT. DO NOT STRETCH THE BLANKETS.
5. DESIGNER/ENGINEER SHALL CHOOSE THE TYPE OF BLANKET OR MATTING DEPENDING ON SPECIFIC OBJECTIVES AND SITE CONDITIONS.

1. INSTALLATION NOTES:

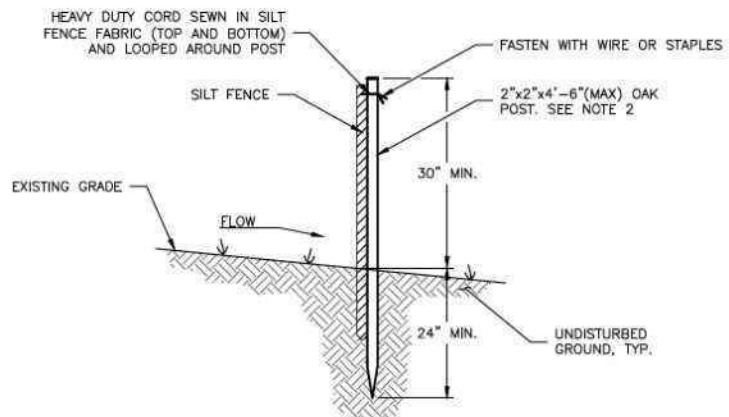
1. PREPARE SOIL BEFORE INSTALLING ROLLED EROSION CONTROL PRODUCTS (RECP's), INCLUDING ANY NECESSARY APPLICATION OF LIME, FERTILIZER, AND SEED.
2. BEGIN AT THE TOP OF THE SLOPE BY ANCHORING THE RECP's IN A 6" (15cm) DEEP x 6" (15cm) WIDE TRENCH WITH APPROXIMATELY 12" (30cm) OR RECP's EXTENDED BEYOND THE UP-SLOPE PORTION OF THE TRENCH. ANCHOR THE RECP's WITH A ROW OF STAPLES/STAKES APPROXIMATELY 12" (30cm) APART IN THE BOTTOM OF THE TRENCH. BACKFILL AND COMPACT THE TRENCH AFTER STAPLING. APPLY SEED TO COMPACTED SOIL AND FOLD REMAINING 12" (30cm) PORTION OF RECP's BACK OVER SEED AND COMPACTED SOIL. SECURE RECP's OVER COMPACTED SOIL WITH A ROW OF STAPLES/STAKES SPACED APPROXIMATELY 12" (30cm) APART ACROSS THE WIDTH OF THE RECP's.
3. ROLL THE RECP's (A.) DOWN OR (B.) HORIZONTALLY ACROSS THE SLOPE. RECP's WILL UNROLL WITH APPROPRIATE SIDE AGAINST THE SOIL SURFACE. ALL RECP's MUST BE SECURELY FASTENED TO SOIL SURFACE BY PLACING STAPLES/STAKES IN APPROPRIATE LOCATIONS AS SHOWN IN THE STAPLE PATTERN GUIDE(tm). WHEN USING THE DOT SYSTEM, STAPLES/STAKES SHOULD BE PLACED THROUGH EACH OF THE COLORED DOTS CORRESPONDING TO THE APPROPRIATE STAPLE PATTERN.
4. THE EDGES OF PARALLEL RECP's MUST BE STAPLED WITH APPROXIMATELY 2"-5" (5 cm - 12.5 cm) OVERLAP DEPENDING ON RECP's TYPE.
5. CONSECUTIVE RECP's SPLICED DOWN THE SLOPE MUST BE PLACED END OVER END (SHINGLE STYLE) WITH AN APPROXIMATE 3" (7.5cm) OVERLAP. STAPLE THROUGH OVERLAPPED AREA, APPROXIMATELY 12" (30cm) APART ACROSS ENTIRE RECP's WIDTH.



STRAW WATTLE DETAIL



STRAW WATTLE OVERLAP



SILT FENCE DETAIL

NOTES:

1. CONSTRUCTION SHALL BE IN ACCORDANCE WITH NEW HAMPSHIRE ENV-WQ 1506 STANDARDS.
2. SILT FENCE SHOULD BE INSTALLED "TIGHT" AGAINST SILT FENCE. THOROUGHLY COMPACT EXCAVATED SOILS BACK INTO TRENCH AFTER INSTALLATION OF EROSION CONTROL DEVICE. SILT FENCE FABRIC SHALL NOT BE SILT. STANDARD 8 1 0 POST SHALL BE DRIVEN THROUGH SILT FENCE FABRIC. 2"x2"x4'-6"(MAX) O.C. IN WETLAND AREAS AND 4'-0" (MAX) O.C. IN WETLAND RAVINE GULLY OR DROP OFF AREAS AS SHOWN ON PLANS.
3. 1"x1"x 4'-8"(MIN) POSTS PERMITTED FOR PREFABRICATED SILT FENCE.
4. SILT FENCE SHALL BE INSTALLED BEFORE ANY GRUBBING OR EARTH EXCAVATION TAKES PLACE.

UNLESS SPECIFICALLY STATED BY WRITTEN AGREEMENT, THIS DRAWING IS THE SOLE PROPERTY OF GZA GEOENVIRONMENTAL, INC. (GZA). THE INFORMATION SHOWN ON THE DRAWING IS SOLELY FOR THE USE BY GZA'S CLIENT OR THE CLIENT'S DESIGNATED REPRESENTATIVE FOR THE SPECIFIC PROJECT AND LOCATION IDENTIFIED ON THE DRAWING. THE DRAWING SHALL NOT BE TRANSFERRED, REUSED, COPIED, OR ALTERED IN ANY MANNER FOR USE AT ANY OTHER LOCATION OR FOR ANY OTHER PURPOSE WITHOUT THE PRIOR WRITTEN CONSENT OF GZA. ANY TRANSFER, REUSE, OR MODIFICATION TO THE DRAWING BY THE CLIENT OR OTHERS, WITHOUT THE PRIOR WRITTEN EXPRESS CONSENT OF GZA, WILL BE AT THE USER'S SOLE RISK AND WITHOUT ANY RISK OR LIABILITY TO GZA.

334G DISTRIBUTION LINE
STRUCTURE REPLACEMENT PROJECT
CONCORD, NEW HAMPSHIRE

BMP DETAILS

PREPARED BY: GZA GeoEnvironmental, Inc. Engineers and Scientists www.gza.com		PREPARED FOR: EVERSOURCE ENERGY	
PROJ MGR: CEM	REVIEWED BY: TLT	CHECKED BY: DMZ	SHEET S3
DESIGNED BY: HP	DRAWN BY: LEW	SCALE:	
DATE: 04/30/2025	PROJECT NO. 04.0191687.04	REVISION NO.	

NEW HAMPSHIRE FISH AND GAME AOT PERMIT CONDITIONS IN ACCORDANCE WITH ENV-WQ 1504.18 – WILDLIFE PROTECTION NOTES

NHB24-2089 (CONCORD)

- NEW HAMPSHIRE FISH AND GAME PERMIT CONDITIONS:
1. BLANDING'S TURTLE (STATE ENDANGERED), SPOTTED TURTLE (STATE THREATENED), WOOD TURTLE (STATE SPECIES OF SPECIAL CONCERN), AND NORTHERN BLACK RACER (STATE THREATENED) OCCUR WITHIN THE VICINITY OF THE PROJECT AREA. ALL OPERATORS AND PERSONNEL WORKING ON OR ENTERING THE SITE SHALL BE MADE AWARE OF THE POTENTIAL PRESENCE OF THESE SPECIES AND SHALL BE PROVIDED FLYERS THAT HELP TO IDENTIFY THESE SPECIES, ALONG WITH NHFG CONTACT INFORMATION. SEE PLAN SHEET 5.
2. RARE SPECIES INFORMATION (E.G. IDENTIFICATION, OBSERVATION AND REPORTING OF OBSERVATIONS, WHEN TO CONTACT NHFG IMMEDIATELY AND NHFG CONTACT INFORMATION) SHALL BE POSTED ON SITE AT ALL TIMES AND COMMUNICATED DURING MORNING TAILGATE MEETINGS PRIOR TO WORK COMMENCEMENT.
3. TURTLES AND SNAKES MAY BE ATTRACTED TO DISTURBED GROUND DURING NESTING SEASON. TURTLE NESTING SEASON OCCURS APPROXIMATELY MAY 15TH – JUNE 30TH. NESTING AREAS MAY INCLUDE WORK PADS AND ACCESS ROADS THAT ARE NOT HARD PACK GRAVEL AND OTHER SANDY/GRAVEL WORK AREAS. ALL TURTLE SPECIES NESTS ARE PROTECTED BY NH LAWS. BE AWARE OF THE POTENTIAL TO ENCOUNTER NESTING WILDLIFE IN THESE AREAS.
4. IF A NEST IS OBSERVED OR SUSPECTED, OPERATORS SHALL CONTACT MELISSA WINTERS (603-479-1129) OR JOSH MEGYESY (978-578-0802) AT NHFG IMMEDIATELY FOR FURTHER CONSULTATION. THE NEST OR SUSPECTED NEST SHALL BE MARKED (SURROUNDING ROPED OFF OR CONE BUFFER) AND AVOIDED; THIS SHALL BE COMMUNICATED TO ALL PERSONNEL ONSITE. SITE ACTIVITIES SHALL NOT OCCUR IN THE AREA SURROUNDING THE NEST OR SUSPECTED NEST UNTIL FURTHER GUIDANCE IS PROVIDED BY NHFG.
5. OBSERVATIONS OF NORTHERN BLACK RACERS IN THE MONTHS OF APRIL-MAY AND SEPTEMBER-OCTOBER MAY INDICATE THE POTENTIAL FOR A DEN SITE ON OR NEAR THE PROJECT SITE. OBSERVATIONS OF THIS SPECIES DURING THIS TIMEFRAME SHALL BE REPORTED IMMEDIATELY TO THE NEW HAMPSHIRE FISH AND GAME DEPARTMENT NONGAME AND ENDANGERED WILDLIFE ENVIRONMENTAL REVIEW PROGRAM, AND WORK SHOULD CEASE UNTIL FURTHER COORDINATION WITH NHFG. PLEASE CONTACT MELISSA WINTERS (603-479-1129) OR BRENDAN CLIFFORD (603-944-0885). OBSERVATIONS OF THIS SPECIES OUTSIDE OF THIS TIMEFRAME CAN FOLLOW GENERAL REPORTING GUIDANCE. PLEASE INCLUDE PHOTOGRAPH WITH TEXT IF FEASIBLE.
6. VERNAL POOLS AND POTENTIAL VERNAL POOLS SHALL BE FLAGGED PRIOR TO WORK, AND IMPACTS SHALL BE AVOIDED.
7. NO DISTURB VEGETATIVE BUFFERS OF 50' SHALL BE MAINTAINED AROUND VERNAL POOLS WHEREVER POSSIBLE. IMPACTS TO VERNAL POOL BUFFERS SHALL BE IDENTIFIED TO NHFG PRIOR TO WORK.
- A. IMPACT TO THE VERNAL POOL BUFFER AT STRUCTURE 88 SHALL ONLY OCCUR DECEMBER 1 TO MARCH 1. WORK SHALL OCCUR UNDER FROZEN OR DRY CONDITIONS IF POSSIBLE. NHFG SHALL BE NOTIFIED PRIOR TO DISTURBANCE.
8. ALL MATTING WHICH WILL BE PLACED IN WATERBODIES DEEMED SUITABLE FOR HIBERNATING RARE TURTLES WILL BE PLACED PRIOR TO THE START OF THE INACTIVE SEASON (OCTOBER 16-MARCH 31) SO AS TO PREVENT ACCIDENTAL PLACEMENT ATOP HIBERNATING TURTLES. . AREAS IDENTIFIED AS SUITABLE HIBERNATION HABITAT SHALL BE IDENTIFIED ON PLAN SHEETS AND PROVIDED TO NHFG AT LEAST TWO WEEKS PRIOR TO BEGINNING WORK
9. IMMEDIATELY PRIOR TO MATTING PLACEMENT IN WETLANDS, THE AREA SHALL BE SWEEP BY A TRAINED INDIVIDUAL. THEY SHALL WATCH FOR SIGNS THAT TURTLES ARE BEING DISTURBED IN THE AREA (EX. HEADS COMING ABOVE WATER, ANIMALS MOVING IN WATER). CONTACT NHFG IF BIOLOGIST/HERPETOLOGIST SEES OR SUSPECTS TURTLES IN MATTING AREAS. A TRAINED INDIVIDUAL SHALL BE DEFINED AS ANY CONTRACTOR WHO HAS GONE THROUGH PROJECT-SPECIES PROTECTION EDUCATION CONDUCTED BY THE QUALIFIED BIOLOGIST ON RARE WILDLIFE SPECIES AT THE SITE.
10. SEARCHES AND SWEEPS SHALL BE CONDUCTED BY TRAINED INDIVIDUALS IMMEDIATELY BEFORE THE START OF WORK AND MOVEMENT OF EQUIPMENT IN ORDER TO MINIMIZE THE CHANCE OF ANIMALS ENTERING AN AREA BETWEEN THE SWEEP AND WORK. A TRAINED INDIVIDUAL SHALL BE DEFINED AS ANY CONTRACTOR WHO HAS GONE THROUGH PROJECT-SPECIES PROTECTION EDUCATION CONDUCTED BY THE QUALIFIED BIOLOGIST ON RARE WILDLIFE SPECIES AT THE SITE.
11. ALL WORK ACTIVITIES SHALL BE RESTRICTED TO THE DEFINED ROADS, CONSTRUCTION AREAS, AND STAGING AREAS, WITH NO EQUIPMENT OR MATERIALS STAGED OR STORED OUTSIDE OF THE DEFINED AREAS AS SHOWN ON PLAN SHEETS.
12. WORK, PULL PADS, AND ACCESS SHALL BE MINIMIZED TO THE GREATEST EXTENT POSSIBLE.
13. WORKS PADS SHALL BE REDUCED POST-CONSTRUCTION TO 30' X 60' AND RESTORED WITH A NATIVE VEGETATION SEED MIX.
14. ALL MANUFACTURED EROSION AND SEDIMENT CONTROL PRODUCTS, WITH THE EXCEPTION OF TURF REINFORCEMENT MATS, UTILIZED FOR, BUT NOT LIMITED TO, SLOPE PROTECTION, RUNOFF DIVERSION, SLOPE INTERRUPTION, PERIMETER CONTROL, INLET PROTECTION, CHECK DAMS, AND SEDIMENT TRAPS SHALL NOT CONTAIN PLASTIC, OR MULTIFILAMENT OR MONOFILAMENT POLYPROPYLENE NETTING OR MESH WITH AN OPENING SIZE OF GREATER THAN 1/8 INCHES;
15. ALL OBSERVATIONS OF THREATENED OR ENDANGERED SPECIES ON THE PROJECT SITE SHALL BE REPORTED IMMEDIATELY TO THE NHFG NONGAME AND ENDANGERED WILDLIFE ENVIRONMENTAL REVIEW PROGRAM BY PHONE AT 603-271-2461 AND BY EMAIL AT NHFGREVIEW@WILDLIFE.NH.GOV, WITH THE EMAIL SUBJECT LINE CONTAINING THE NHB DATACHECK TOOL RESULTS LETTER ASSIGNED NUMBER, THE PROJECT NAME, AND THE TERM WILDLIFE SPECIES OBSERVATION;
16. PHOTOGRAPHS OF THE OBSERVED SPECIES AND NEARBY ELEMENTS OF HABITAT OR AREAS OF LAND DISTURBANCE SHALL BE PROVIDED TO NHFG IN DIGITAL FORMAT AT THE ABOVE EMAIL ADDRESS FOR VERIFICATION, AS FEASIBLE;
17. IN THE EVENT A THREATENED OR ENDANGERED SPECIES IS OBSERVED ON THE PROJECT SITE DURING THE TERM OF THE PERMIT, THE SPECIES SHALL NOT BE DISTURBED, HANDLED, OR HARMED IN ANY WAY PRIOR TO CONSULTATION WITH NHFG AND IMPLEMENTATION OF CORRECTIVE ACTIONS RECOMMENDED BY NHFG.
- A. SITE OPERATORS SHALL BE ALLOWED TO RELOCATE WILDLIFE ENCOUNTERED IF DISCOVERED WITHIN THE ACTIVE WORK ZONE AND IF IN DIRECT HARM FROM PROJECT ACTIVITIES. WILDLIFE SHALL BE RELOCATED IN CLOSE PROXIMITY TO THE CAPTURE LOCATION BUT OUTSIDE OF THE WORK ZONE AND IN THE DIRECTION THE INDIVIDUAL WAS HEADING. NHFG SHALL BE CONTACTED IMMEDIATELY IF THIS ACTION OCCURS.
18. THE NHFG, INCLUDING ITS EMPLOYEES AND AUTHORIZED AGENTS, SHALL HAVE ACCESS TO THE PROPERTY DURING THE TERM OF THE PERMIT.

ADDITIONAL RECOMMENDATIONS:

•SMOOTH GREEN SNAKES (STATE SPECIES OF SPECIAL CONCERN) OCCUR WITHIN THE VICINITY OF THE PROJECT SITE. ALL OPERATORS AND PERSONNEL WORKING ON OR ENTERING THE SITE SHOULD BE MADE AWARE OF THE POTENTIAL PRESENCE OF THESE SPECIES AND SHOULD BE PROVIDED FLYERS THAT HELP TO IDENTIFY THESE SPECIES, ALONG WITH NHFG CONTACT INFORMATION. RARE SPECIES INFORMATION (E.G. IDENTIFICATION, OBSERVATION AND REPORTING OF OBSERVATIONS, WHEN TO CONTACT NHFG IMMEDIATELY AND NHFG CONTACT INFORMATION) SHOULD BE POSTED ON SITE AT ALL TIMES AND COMMUNICATED DURING MORNING TAILGATE MEETINGS PRIOR TO WORK COMMENCEMENT. SEE PLAN SHEET 5.

UNLESS SPECIFICALLY STATED BY WRITTEN AGREEMENT, THIS DRAWING IS THE SOLE PROPERTY OF GZA GEOENVIRONMENTAL, INC. (GZA). THE INFORMATION SHOWN ON THE DRAWING IS SOLELY FOR THE USE BY GZA'S CLIENT OR THE CLIENT'S DESIGNATED REPRESENTATIVE FOR THE SPECIFIC PROJECT AND LOCATION IDENTIFIED ON THE DRAWING. THE DRAWING SHALL NOT BE TRANSFERRED, REUSED, COPIED, OR ALTERED IN ANY MANNER FOR USE AT ANY OTHER LOCATION OR FOR ANY OTHER PURPOSE WITHOUT THE PRIOR WRITTEN CONSENT OF GZA. ANY TRANSFER, REUSE, OR MODIFICATION TO THE DRAWING BY THE CLIENT OR OTHERS, WITHOUT THE PRIOR WRITTEN EXPRESS CONSENT OF GZA, WILL BE AT THE USER'S SOLE RISK AND WITHOUT ANY RISK OR LIABILITY TO GZA.

334G DISTRIBUTION LINE STRUCTURE REPLACEMENT PROJECT

CONCORD,
NEW HAMPSHIRE

NOTES

PREPARED BY:
 **GZA** GeoEnvironmental, Inc.
Engineers and Scientists
www.gza.com

PREPARED FOR:
 **EVERSOURCE**
ENERGY

PROJ MGR: LEW	REVIEWED BY: TLT	CHECKED BY: DMZ	SHEET S4
DESIGNED BY: MJD	DRAWN BY: MJD	SCALE:	
DATE: 04/30/2025	PROJECT NO: 04.0191687.04	REVISION NO:	

WOOD TURTLE (GLYPTEMYS INSCULPTA)
STATE SPECIES OF SPECIAL CONCERN



WOOD TURTLE IDENTIFICATION

1. NECK AND FORELIMBS ARE ORANGE.
2. CHARACTERIZED BY ITS HIGHLY SCULPTED SHELL WITH EACH LARGE SCUTE TAKING ON AN IRREGULAR PYRAMIDAL SHAPE.
3. ADULTS CAN BE 5-8 INCHES LONG.

BLANDING'S TURTLE (EMYDOIDEA BLANDINGII)
STATE ENDANGERED



BLANDING'S TURTLE IDENTIFICATION

1. LARGE, DARK/BLACK DOMED SHELL WITH LIGHTER SPECKLES.
2. DISTINCT YELLOW THROAT/CHIN.
3. AQUATIC BUT OFTEN MOVES ON LAND.

*ALL PHOTOS AND IDENTIFICATION INFORMATION COURTESY OF NEW HAMPSHIRE FISH AND GAME DEPARTMENT.

EASTERN HOGNOSE SNAKE (HETERODON PLATIRHINOS)
STATE ENDANGERED



EASTERN HOGNOSE SNAKE IDENTIFICATION

1. A THICK BODIED SNAKE MEASURING 20-35 INCHES
2. HAS CHARACTERISTIC UPTURNED SNOUT AND KEELED DORSAL SCALES
3. LIGHT AND DARK BLOTCHES VARY IN COLOR FROM BROWN TO RED AND ORANGE

UNLESS SPECIFICALLY STATED BY WRITTEN AGREEMENT, THIS DRAWING IS THE SOLE PROPERTY OF GZA GEOENVIRONMENTAL, INC. (GZA). THE INFORMATION SHOWN ON THE DRAWING IS SOLELY FOR THE USE BY GZA'S CLIENT OR THE CLIENT'S DESIGNATED REPRESENTATIVE FOR THE SPECIFIC PROJECT AND LOCATION IDENTIFIED ON THE DRAWING. THE DRAWING SHALL NOT BE TRANSFERRED, REUSED, COPIED, OR ALTERED IN ANY MANNER FOR USE AT ANY OTHER LOCATION OR FOR ANY OTHER PURPOSE WITHOUT THE PRIOR WRITTEN CONSENT OF GZA. ANY TRANSFER, REUSE, OR MODIFICATION TO THE DRAWING BY THE CLIENT OR OTHERS, WITHOUT THE PRIOR WRITTEN EXPRESS CONSENT OF GZA, WILL BE AT THE USER'S SOLE RISK AND WITHOUT ANY RISK OR LIABILITY TO GZA.

334G DISTRIBUTION LINE
STRUCTURE REPLACEMENT PROJECT
CONCORD,
NEW HAMPSHIRE

WILDLIFE NOTES

PREPARED BY:
GZA GeoEnvironmental, Inc.,
Engineers and Scientists
www.gza.com

PREPARED FOR:
EVERSOURCE
ENERGY

PROJ MGR: CEM
DESIGNED BY: MJD
DATE: 04/30/2025

REVIEWED BY: TLT
DRAWN BY: MJD
PROJECT NO: 04.0191687.04

CHECKED BY: DMZ
SCALE:
REVISION NO:
S5

NORTHERN LEOPARD TOAD (LITHOBATES PAPIENS)
SPECIES OF SPECIAL CONCERN



- NORTHERN LEOPARD TOAD IDENTIFICATION**
1. A 2-3.5 INCH SLENDER BROWNISH OR GREEN FROG WITH 2 OR 3 ROWS OF IRREGULAR ROUNDED DARK SPOTS WITH PALE BORDERS
 2. HAS A LIGHT LINE ON THE UPPER JAW

PINE BARRENS ZANCLOGNATHA MOTH (ZANCLOGNATHA MARTHA)
SPECIES OF SPECIAL CONCERN



- PINE BARRENS ZANCLOGNATHA MOTH IDENTIFICATION**
1. UNIFORMLY BROWNISH-GRAY SPECIES WITH A VIOLET TINGE
 2. RELATIVELY LARGE, RANGING FROM 20MM-30MM

FOWLER'S TOAD (ANAXYRUS FOWLERI)
THREATENED



- FOWLER'S TOAD IDENTIFICATION**
1. A 2-3 INCH TOAD THAT TYPICALLY HAS 3 OR MORE WARTS IN EACH OF THE DARKEST LARGE SPOTS
 2. HAS AN UNSPOTTED CHEST AND BELLY

RAPIDS CLUBTAIL (GOMPHUS QUADRICOLOR)
SPECIES OF SPECIAL CONCERN



- RAPIDS CLUBTAIL IDENTIFICATION**
1. GREENISH YELLOW IN COLOR WITH BLACKISH BROWN STRIPES AND A BLACKISH ABDOMEN WITH YELLOW DORSAL AND LATERAL STRIPES
 2. BLUE-GREEN EYES

UNLESS SPECIFICALLY STATED BY WRITTEN AGREEMENT, THIS DRAWING IS THE SOLE PROPERTY OF GZA GEOENVIRONMENTAL, INC. (GZA). THE INFORMATION SHOWN ON THE DRAWING IS SOLELY FOR THE USE BY GZA'S CLIENT OR THE CLIENT'S DESIGNATED REPRESENTATIVE FOR THE SPECIFIC PROJECT AND LOCATION IDENTIFIED ON THE DRAWING. THE DRAWING SHALL NOT BE TRANSFERRED, REUSED, COPIED, OR ALTERED IN ANY MANNER FOR USE AT ANY OTHER LOCATION OR FOR ANY OTHER PURPOSE WITHOUT THE PRIOR WRITTEN CONSENT OF GZA. ANY TRANSFER, REUSE, OR MODIFICATION TO THE DRAWING BY THE CLIENT OR OTHERS, WITHOUT THE PRIOR WRITTEN EXPRESS CONSENT OF GZA, WILL BE AT THE USER'S SOLE RISK AND WITHOUT ANY RISK OR LIABILITY TO GZA.

**334G DISTRIBUTION LINE
STRUCTURE REPLACEMENT PROJECT**
CONCORD,
NEW HAMPSHIRE

WILDLIFE NOTES

PREPARED BY:
GZA GeoEnvironmental, Inc.,
Engineers and Scientists
www.gza.com

PREPARED FOR:
EVERSOURCE
ENERGY

PROJ MGR: CEM
DESIGNED BY: MJD
DATE: 04/30/2025

REVIEWED BY: TLT
DRAWN BY: MJD
PROJECT NO: 04.0191687.04

CHECKED BY: DMZ
SCALE:
REVISION NO:
S6